

# English M.A. Map

*Navigating Graduate Studies and Beyond*

GRAD MAP FOR M.A. STUDENTS 

## How do I **USE THIS MAP?**

Whether you are considering or have embarked on graduate studies at Queen's, use this map to plan for success in five overlapping areas of your career and academic life. The map helps you explore possibilities, set goals and track your individual accomplishments. Everyone's journey is different – the guide offers options for finding your way at Queen's and setting the foundation for your future. To make your own customized map, use the online [My Grad Map](#) tool.

## Why **GRADUATE STUDIES** in **ENGLISH?**

The English Department at Queen's University is a professionally-oriented research department whose faculty members are distinguished by both scholarly prowess and teaching excellence. Students in the MA and the PhD programs take courses that involve a wide range of critical methodologies, historical periods, and literary genres; they also take a pedagogical and professional skills course that ranges from academic counselling to grant applications to mentoring undergraduate students.

## Why **QUEEN'S?**

*"I have been at Queen's for both my M.A. & Ph.D, and I can say it's an outstanding program. The library collections are among the best in the country. The size of the program is ideal [...] and, probably most importantly, the faculty are both accomplished and approachable at the same time."*

– Robyn Carruthers, PhD

The Master's and Doctoral programs in English at Queen's are among the oldest and most prestigious in the country, combining commitment to historical breadth with promotion of methodological and disciplinary innovation. The department's vibrant intellectual community is developed and sustained by the synergies between the knowledge and passion of our distinguished faculty and the ideas and inspirations of our outstanding graduate students.

Image: Queen's University Flickr



Our Master's students consistently demonstrate high rates of success in national awards competitions, in achieving entry into doctoral programs, and in securing employment in fields as varied as editing, publishing, teaching, law, civil service, business, NGO work, and information technologies.

At Queen's, graduate students from all disciplines learn and discover in a close-knit intellectual community. You will find friends, peers and support among the graduate students enrolled in Queen's more than 130 graduate programs within 50+ departments & research centres. With the world's best scholars, prize-winning professional development opportunities, excellent funding packages and life in the affordable, historic waterfront city of Kingston, Queen's offers a wonderful environment for graduate studies.

## Why **KINGSTON?**

Described by students as both "quaint" and "eclectic," Kingston is big enough to provide all the conveniences of modern life, and small enough for students, staff, and faculty to feel instantly comfortable and at home.

Queen's is an integral part of the Kingston community, with the campus nestled in the core of the city, only a 10-minute walk to downtown with its shopping, dining and waterfront. For more about Kingston's history and culture, see Queen's University's [Discover Kingston](#) page.

## Program **STRUCTURE**

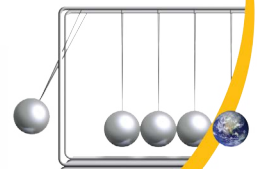
The 12-month Master of English is offered in 2 patterns:

- Pattern I: Course work. (Recommended standard for an M.A. in English.)
- Pattern II: Course work and thesis of approximately 15,000 words.

## Fields of **STUDY**

- Medieval Literature
- Renaissance Literature
- Restoration & 18<sup>th</sup>-Century Literature
- Romantic Literature
- Victorian Literature
- Modernist Literature
- American Literature
- Canadian Literature
- Indigenous Studies
- Gender Studies
- Postcolonial Studies
- Literary Theory

School of  
Graduate  
Studies  
Create an impact  
[www.queensu.ca/sgs](http://www.queensu.ca/sgs)



## GETTING STARTED

## INTERMEDIATE STAGE

## WRAPPING UP

### ACHIEVE YOUR ACADEMIC GOALS

- Start with key priorities like determining a course pattern that builds on your passions while covering your historical requirements.
- Consider how your courses might prepare you for eventual doctoral work or other educational and career goals beyond the MA.
- Find your way through the academic process with help from departmental and [Expanding Horizons](#) professional development workshops, the department Grad Chair and the [SGS Habitat](#).

### MAXIMIZE RESEARCH IMPACT

- Start to think about the audiences for your research.
- If you will be continuing graduate studies, apply for SSHRC and OGS funding.

### BUILD SKILLS AND EXPERIENCE

- Consider positions in student services, the [SGPS](#), or media outlets like the [Queen's Journal](#), [CFRC](#), [QTV](#) and the [SGS Blog](#). Look in the [AMS Clubs Directory](#) for more ideas.
- Serve on departmental, faculty or university committees. Talk to the [Graduate English Society](#) for tips on getting involved.
- Check out professional development workshops from [Expanding Horizons](#) and the history department.

### ENGAGE WITH YOUR COMMUNITY

- Explore how you can connect with your community through experiential opportunities on- and off-campus.
- Consider whether you wish to take the "Literary Internship" as one of your courses in the Fall term.
- Consider volunteering with different community organizations, such as [Literacy Kingston](#), [Kingston WritersFest](#), the Wolfe Island Writer's Festival.

### LAUNCH YOUR CAREER

- Finding a career that fits starts with knowing yourself. Get help by taking the [Career Services Career Planning workshop](#) or meeting with a career counsellor. Check out books like *So What Are You Going to do With That?* for advice on various career options.
- Start reading publications like [University Affairs](#) and the [Chronicle of Higher Education](#). Browse non-academic labour market websites. Stay on the lookout for special events like Graduate Student [Career Week](#) to explore your career pathways.
- Check admission test deadlines if needed for further studies.

- Continue your coursework, being alert to final essays that might be revised into publishable papers.
- For thesis-based MA students, produce the thesis proposal and initial research and writing for the thesis.

- Attend or present at a graduate conference.
- Consider participating in the [3 Minute Thesis \(3MT\)](#) competition.
- Expand your research audience through social media such as Twitter or a blog.

- Start keeping an eportfolio of your skills, experiences and competencies.
- Use a Research Assistant or Teaching Assistant position to develop your research or teaching skills.
- For help with teaching, get support from the [Centre for Teaching and Learning](#). Enroll in [SGS901](#) or the [PUTL certificate](#) for more professional development in teaching and learning.

- Participate in your graduate and professional community through activities such as graduate student outreach programs, organizing conferences, and research groups like [Material Matters](#).
- Prepare for work or studies in a multi-cultural environment by taking QUIC's [Intercultural Competency Certificate](#).
- If you are an international student interested in staying in Canada, consider speaking with an [International Student Advisor](#).

- Explore different careers of interest by reading [alumni profiles](#) on the SGS website, and using [QueensConnects](#) on LinkedIn to connect with Queen's alumni, or find alumni in various careers through "[Ask an Alum](#)".
- Check out the free online modules at [MyGradSkills](#) to help you plan your career.
- If you are considering a PhD, explore programs of interest reach out to faculty, and apply to PhD programs and external scholarships.

- Complete your coursework.
- For thesis-based MA students, complete your thesis.

- Consider publication options for your research.
- Attend a major conference in your field, such as the [Secret/s & Surveillance: The Annual Meeting of the Canadian Society for Eighteenth-Century Studies](#) at Queen's in October 2016.

- Practice articulating the skills you have been developing in settings outside the university, such as casual conversation, networking, and interviews. Get help with the [Skills and Experience workshop](#).
- Check out opportunities for extra training through CTL, Expanding Horizons, Mitacs, or other sources to boost your skills.
- Investigate internships from [Mitacs](#) and [other sources](#).

- Do some targeted networking with people working in careers of interest, through [QueensConnects](#) on LinkedIn, the [Queen's Alumni Association](#), professional associations, and at conferences. Check out Career Services' [networking workshops](#).
- Consider joining professional associations like the [ACCUTE](#), MLA, and more.

- Participate in hiring committees and attend job talks. Start focusing on areas of interest. Research organizations of interest and start putting together your CV or resume for potential positions of interest. Get help from Career Services with [job searching](#), [resumes](#), or [interviews](#).

## EMPLOYABILITY SKILLS

**Knowledge and technical skills** in area of specialization

**Communication:** effective and clear in written, oral and multimedia forms, for diverse audiences

**Information management:** prioritize, organize and synthesize large amounts of information

**Time management:** meet deadlines and responsibilities despite competing demands

**Project management:** develop ideas, gather information, analyze, critically appraise findings, draw and act on conclusions

**Creativity and innovation** to address complex, multifaceted challenges

**Perseverance** to work through challenges to achieve desired outcome

**Independence** and experience as a **collaborative** worker

**Awareness** and understanding of sound **ethical** practices, **social responsibility**, responsible research and **cultural sensitivity**

**Professionalism** in all aspects of work, research, and interactions

**Leadership:** initiative and vision leading people and discussions

# M.A. Map FAQs

## What do I need to know to apply?

### ACADEMIC REQUIREMENTS

- Honours Bachelor of Arts degree.
- **Grade requirements:** minimum average of B+ over all 4 years of undergraduate study, with a cumulative minimum average of A- in 10 full-year English Literature courses (or equivalent).

### ADDITIONAL REQUIREMENTS

- Statement of Interest
- If English is not a native language, prospective students must meet the **TOEFL requirements** in writing, speaking, reading, and listening.

### KEY DATES & DEADLINES

- **Application due:** January 15 for all documentation and application.
- **Notification of acceptance:** March and April.

Before you start your application, please review the [Graduate studies application process](#).

## How do I find a supervisor?

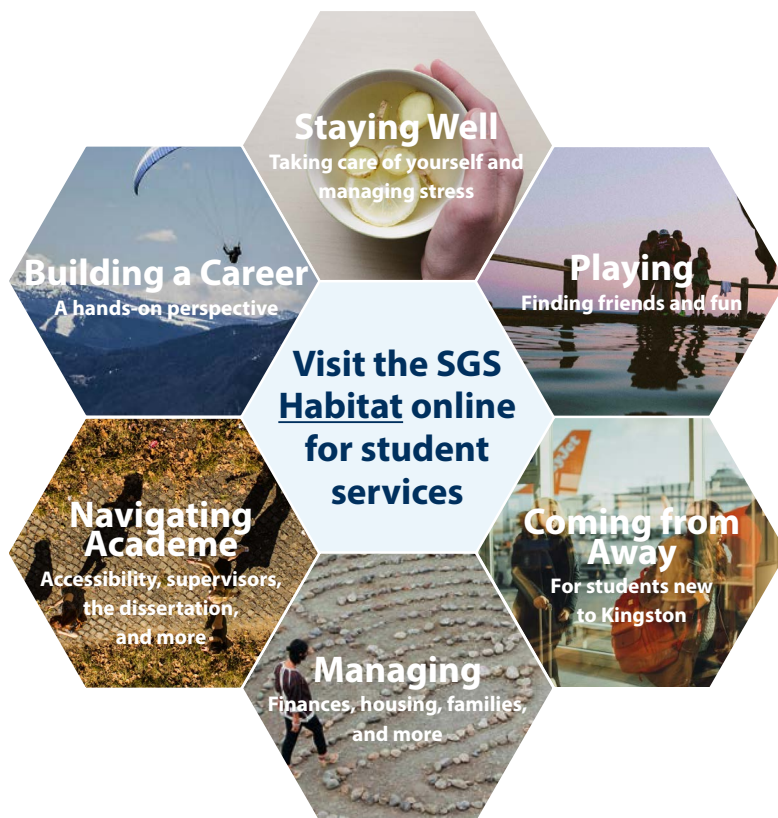
We encourage you to identify an area of research interest and contact a potential supervisor before applying, would you be interested in the MA thesis option.

Visit the English Department website to read [faculty profiles](#) and learn more about faculty members' research areas. When you find a faculty member with similar research interests to yours, contact him/her and tell them about your interest in graduate work and related experience.

## What about funding?

Master of English students receive minimum funding of \$12,000 for the one-year program. Students are usually funded through a combination of internal fellowships, teaching assistantships, bursaries, and scholarships as part of the basic funding package.

Apply for external funding from OGS, SSHRC and other sources. Queen's will automatically issue a \$5,000 top-up to Masters winners of federal government tri-council awards. For more information, see the School of Graduate Studies' information on [awards and scholarships](#).

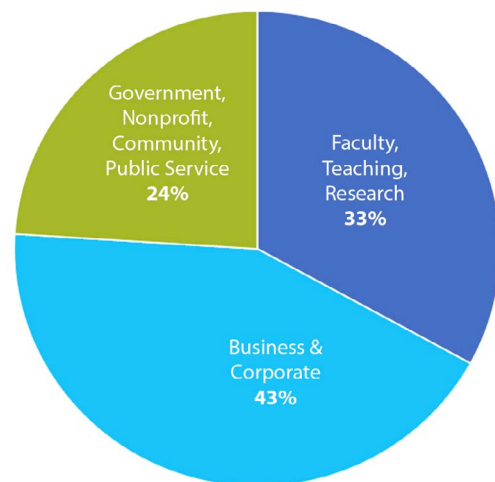


# Where Can a Graduate Degree Take Me?

A Master's degree in English can take your career in many directions. Many of our MA students choose to continue their academic inquiry with a PhD. Our Master's students are equipped with a strong foundation for careers in:

- Writing
- Editing
- Publishing
- Teaching
- Law
- Civil service
- Business
- NGO work
- Information technologies

Taking time to explore career options, build experience, and network can help you have a smooth transition to the world of work after graduation.



## M.A. Career Outcomes in the Humanities

*Council of Graduate Schools and Educational Testing Service. (2012). Pathways Through Graduate School and Into Careers. Princeton, NJ: Educational Testing Service.*



DEPARTMENT OF  
ENGLISH LANGUAGE  
AND LITERATURE

Department of English Language and Literature  
613.533.2153  
lf34@queensu.ca  
www.queensu.ca/english