

English Ph.D. Map

Navigating Graduate Studies and Beyond

GRAD MAP FOR PH.D. STUDENTS 

How do I **USE THIS MAP?**

Whether you are considering or have embarked on graduate studies at Queen's, use this map to plan for success in five overlapping areas of your career and academic life. The map helps you explore possibilities, set goals and track your individual accomplishments. Everyone's journey is different – the guide offers options for finding your way at Queen's and setting the foundation for your future. To make your own customized map, use the online [My Grad Map](#) tool.

Why **GRADUATE STUDIES** in **ENGLISH?**

The English Department at Queen's University is a professionally-oriented research department whose faculty members are distinguished by both scholarly prowess and teaching excellence. Students in the MA and the PhD programs take courses that involve a wide range of critical methodologies, historical periods, and literary genres; they also take a pedagogical and professional skills course that ranges from academic counselling to grant applications to mentoring undergraduate students.

Why **QUEEN'S?**

"I have been at Queen's for both my M.A. & Ph.D, and I can say it's an outstanding program. The library collections are among the best in the country. The size of the program is ideal [...] and, probably most importantly, the faculty are both accomplished and approachable at the same time."

– Robyn Carruthers, PhD

The Master's and Doctoral programs in English at Queen's are among the oldest and most prestigious in the country, combining commitment to historical breadth with promotion of methodological and disciplinary innovation. The department's vibrant intellectual community is developed and sustained by the synergies between the knowledge and passion of our distinguished faculty and the ideas and inspirations of our outstanding graduate students.

Image: Queen's Flickr



Offered by Queen's since 1942, the PhD in English is designed to foster the scholarly development of our students; we prioritize mentorship, professionalization, and intellectual exchange while maintaining an abiding excitement about our students' autonomous programs of research. The department is small enough that students get to know our faculty, yet large enough to boast faculty expertise in all major historical periods and a wide array of critical methodologies for literary study.

At Queen's, graduate students from all disciplines learn and discover in a close-knit intellectual community. You will find friends, peers and support among the graduate students enrolled in Queen's more than 130 graduate programs within 50+ departments & research centres. With the world's best scholars, prize-winning professional development opportunities, excellent funding packages and life in the affordable, historic waterfront city of Kingston, Queen's offers a wonderful environment for graduate studies.

Why **KINGSTON?**

Described by students as both "quaint" and "eclectic," Kingston is big enough to provide all the conveniences of modern life, and small enough for students, staff, and faculty to feel instantly comfortable and at home.

Queen's is an integral part of the Kingston community, with the campus nestled in the core of the city, only a 10-minute walk to downtown with its shopping, dining and waterfront. For

more about Kingston's history and culture, see Queen's University's [Discover Kingston](#) page.

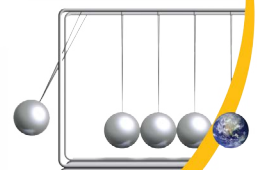
Program **STRUCTURE**

PhD (4 years): course work, two-part comprehensive examination (Field Examination and Special Topic Presentation), and dissertation.

Fields of **STUDY**

- Medieval Literature
- Renaissance Literature
- Restoration & 18th-Century Literature
- Romantic Literature
- Victorian Literature
- Modernist Literature
- American Literature
- Canadian Literature
- Indigenous Studies
- Gender Studies
- Postcolonial Studies
- Literary Theory

School of
Graduate
Studies
Create an impact
www.queensu.ca/sgs



English PH.D. MAP

DOCTOR OF PHILOSOPHY (PH.D.)

Queen's
175
YEARS

YEAR I

YEAR II

YEAR III

YEAR IV & TRANSITIONING

ACHIEVE YOUR ACADEMIC GOALS

- Key priorities include developing relationships with members of your cohort and with your faculty mentor, pursuing courses in your field of study while fulfilling historical breadth requirements, and completing language exams or language courses.
- Look to [Student Academic Success Services](#) and [Expanding Horizons](#) for a variety of supports.

- Complete two field exams in your area of specialization in the fall.
- Assemble your supervisory committee (including supervisor and second reader).
- Produce Thesis Proposal and Special Topic Presentation Proposal. Complete the Special Topic Presentation.

- Continue researching and begin writing your dissertation. Year III is the one in which students often find it the most difficult to be productive.
- Ensure you have completed language requirements and the upper-year elements of ENGL 900.
- Check out the SGS [Dissertation Boot Camp](#) or [Dissertation on the Lake](#) for writing help.

- Complete and defend your dissertation.
- Continue to pursue publication options for your research. Learn more from the Expanding Horizons [Publishing workshop](#).

MAXIMIZE RESEARCH IMPACT

- Think about audiences for your research.
- Complete [ROMEO online module](#) on research ethics if doing research with living people or sensitive topics.
- Apply to SSHRC, OGS, and [other funding](#).
- Attend conferences in your field.

- Attend or present at a graduate conference such as [Violation: Representations in Literature and Culture](#), an Interdisciplinary Graduate Conference at McGill University.
- Expand your research audience through social media.
- Apply for the Graduate [Dean's Travel Grant for Doctoral Field Research](#).

- Continue to present at conferences.
- Consider participating in the [3 Minute Thesis \(3MT\)](#) competition.
- Contact the [Queen's Media Centre](#) for guidance on speaking to news outlets about your work. List yourself on the [Arts and Science University Research website](#).

- Continue to attend conferences and connect with scholars in your field and with community partners.
- Continue public outreach through social media and the Queen's Media Centre.

BUILD SKILLS AND EXPERIENCE

- Serve on departmental, faculty or university committees. Talk to the [Graduate English Society](#) for tips on getting involved.
- Consider positions in student services, the [SGPS](#), or media outlets like the [Queen's Journal](#), [CFRC](#), [QTV](#) and the [SGS Blog](#). Look in the [AMS Clubs Directory](#).
- Use a Teaching Assistant or Research Assistant position to develop your skills and experience.

- Hone skills for non-academic employment by continuing involvement on committees and in community.
- Begin working as a tutorial leader for ENGL 100.
- For help with teaching, get support from the [Centre for Teaching and Learning](#). Enroll in [SGS901](#) or the [PUTL certificate](#) for more professional development in teaching and learning.

- Continue working as a tutorial leader for ENGL 100.
- Apply and prepare for a Teaching Fellowship in your fourth year.
- Find opportunities for extra training through CTL, Expanding Horizons, [Mitacs](#), or other sources to boost your skills.
- Prepare for work or studies in a multi-cultural environment by taking [QUIC's Intercultural Competency Certificate](#).

- Teach a one-term course as a Departmental Teaching Fellow.
- Practice articulating the skills you have been developing in difficult forums: casual conversation, networking, and interviews. Get help with the [Skills and Experience workshop](#).

ENGAGE WITH YOUR COMMUNITY

- Consider volunteering with different community organizations, such as [Literacy Kingston](#), [Kingston WritersFest](#), the Wolfe Island Writer's Festival.

- Participate in your graduate and professional community through activities such as graduate student outreach programs, organizing conferences, and research groups like [Material Matters](#).

- Do some targeted networking with people working in careers of interest, through [QueensConnects](#) on LinkedIn, the [Queen's Alumni Association](#), professional associations, and at conferences. Check out Career Services' [networking workshops](#).

- Consider joining professional associations like the [ACCUTE](#), MLA, and more.
- Continue targeted networking with people working in careers of interest. Join groups on LinkedIn reflecting specific careers or topics of interest in English studies.

LAUNCH YOUR CAREER

- Finding career fit starts with knowing yourself. Take the [Career Services Career Planning workshop](#) or meet with a career counsellor for help. Check out books like *So What Are You Going to do With That?* for advice on various career options.
- Start reading publications like [University Affairs](#) and the [Chronicle of Higher Education](#). Browse non-academic labour market websites.
- Stay on the lookout for special events like [Graduate Student Career Week](#) to explore your career pathways.

- Start building your teaching portfolio including student evaluations, and seeking mentorship.
- Explore different careers of interest by reading [alumni profiles](#) on the SGS website, and using [QueensConnects](#) on LinkedIn to connect with Queen's alumni, or find alumni in various careers through ["Ask an Alum"](#). For more information check out [Career Cruising](#).
- Investigate requirements for full-time jobs or other opportunities related to careers of interest.

- Participate in hiring committees and attend job talks. Research academic careers of interest. Craft your CV and job application materials.
- Start focusing on non-academic areas of interest. Research organizations of interest and start putting together your industry resume and begin your job search plan.
- Check out the free online modules at [MyGradSkills](#) to help you plan your career.

- Build connections with faculty outside of your department. Pursue interviews for faculty positions and apply for post-doc fellowships and positions.
- Apply to jobs or make plans for other adventures. Get help from Career Services with [job searching, resumes, or interviews](#).
- If considering jobs abroad, research possible immigration regulations. If you are an international student interested in staying in Canada, consider speaking with an [International Student Advisor](#).

EMPLOYABILITY SKILLS

Knowledge and technical skills in area of specialization

Communication: effective and clear in written, oral and multimedia forms, for diverse audiences

Information management: prioritize, organize and synthesize large amounts of information

Time management: meet deadlines and responsibilities despite competing demands

Project management: develop ideas, gather information, analyze, critically appraise findings, draw and act on conclusions

Creativity and innovation to address complex, multifaceted challenges

Perseverance to work through challenges to achieve desired outcome

Independence and experience as a **collaborative** worker

Awareness and understanding of sound **ethical** practices, **social responsibility**, responsible research and **cultural sensitivity**

Professionalism in all aspects of work, research, and interactions

Leadership: initiative and vision leading people and discussions

Ph.D. Map FAQs

What do I need to know to apply?

ACADEMIC REQUIREMENTS

- M.A. degree with minimum average of B+ (77-79%).
- Cumulative minimum average of A- (80%) in 10 full-year English Literature courses (or equivalent).

ADDITIONAL REQUIREMENTS

- Statement of Intent
- Writing sample to be sent directly to English Department
- If English is not a native language, prospective students must meet the [TOEFL requirements](#) in writing, speaking, reading, and listening.

KEY DATES & DEADLINES

- **Application deadline:** January 15.
- **Notification of acceptance:** March and April.

Before you start your application, please review the [Graduate studies application process](#).

How do I find a supervisor?

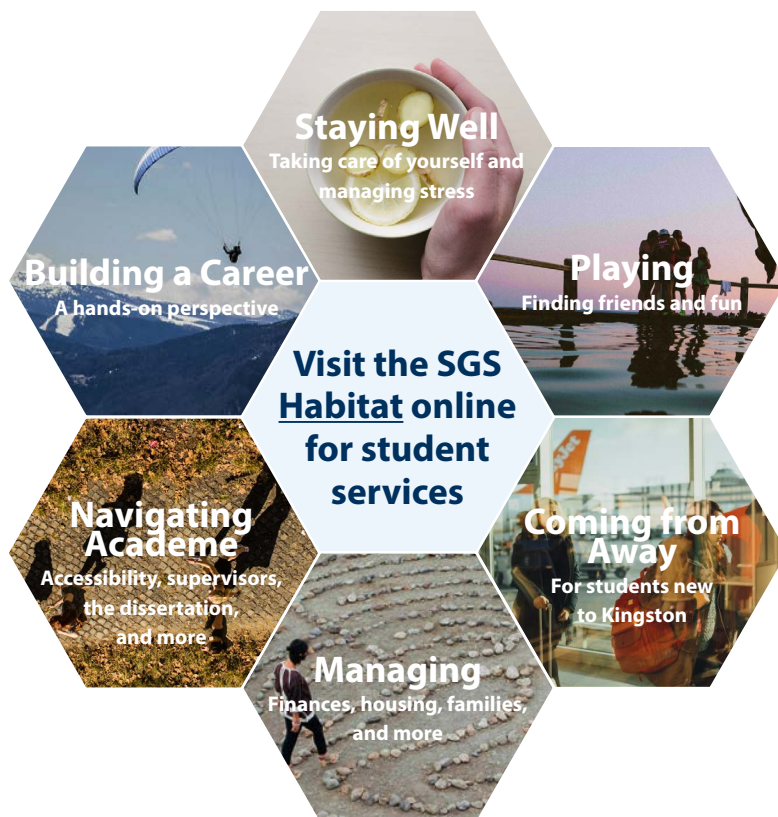
We encourage you to identify an area of research interest and contact a potential supervisor before applying.

Visit the English Department website to read [faculty profiles](#) and learn more about faculty members' research areas. When you find a faculty member with similar research interests to yours, contact him/her and tell them about your interest in graduate work and related experience. This is also an opportunity for you to find out if the faculty member is accepting new graduate students to supervise. Meet with your potential supervisor at departmental events for prospective students.

What about funding?

Minimum funding guarantee for PhD students: \$20,000/year, throughout years 1-4. The funding package may be comprised of Queen's Graduate Awards, Teaching Assistantships, or named internal Fellowships.

We encourage all students to apply for external funding from OGS, SSHRC and other sources. Queen's will automatically issue a \$10,000 award to winners of federal government tri-council awards for PhD studies. For more information, see the School of Graduate Studies' information on [awards and scholarships](#).

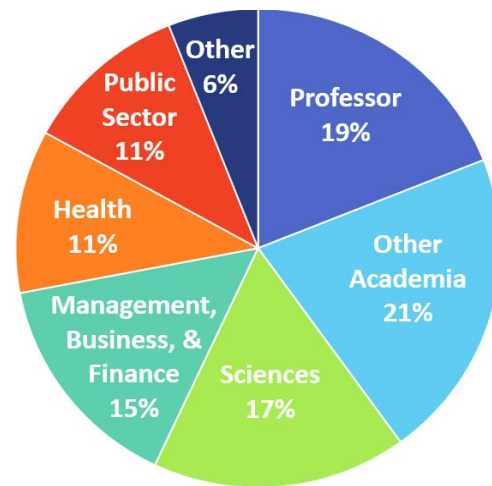


Where Can a Graduate Degree Take Me?

A PhD in English can take your career in many directions. In Canada, less than 40% of all PhDs will work in post-secondary education – the majority will work in industry, government, or non-profits.

- Writing
- Editing
- Publishing
- Teaching
- Law
- Civil service
- Business
- NGO work
- Information technologies

Taking time to explore career options, build experience, and network can help you have a smooth transition to the world of work after graduation.



Ph.D Career Outcomes in Canada

Edge, Jessica, and Daniel Munro. Inside and Outside the Academy: Valuing and Preparing PhDs for Careers. Ottawa: The Conference Board of Canada, 2015.



DEPARTMENT OF
ENGLISH LANGUAGE
AND LITERATURE

Department of English Language and Literature
613.533.2153
lf34@queensu.ca
www.queensu.ca/english