

M.Sc. Map FAQs

What do I need to know to apply?

ACADEMIC REQUIREMENTS

- 4-year Bachelor's degree.
- All students must also have sound math skills. See the Department's website for a [self-assessment](#) of essential mathematics background.
- **Grade requirements:** An overall average of 75% in undergraduate studies.

ADDITIONAL REQUIREMENTS

- If English is not a native language, prospective students must meet the TOEFL requirements in writing, speaking, reading, and listening.
- The GRE is a mandatory requirement for applicants from non-Canadian universities and a minimum score of 149 is required on the quantitative section.

KEY DATES & DEADLINES

- **Application deadline:** January 31 to qualify for internal funding.
- Application review begins in mid-February.

Before you start your application, please review the [Graduate studies application process](#).

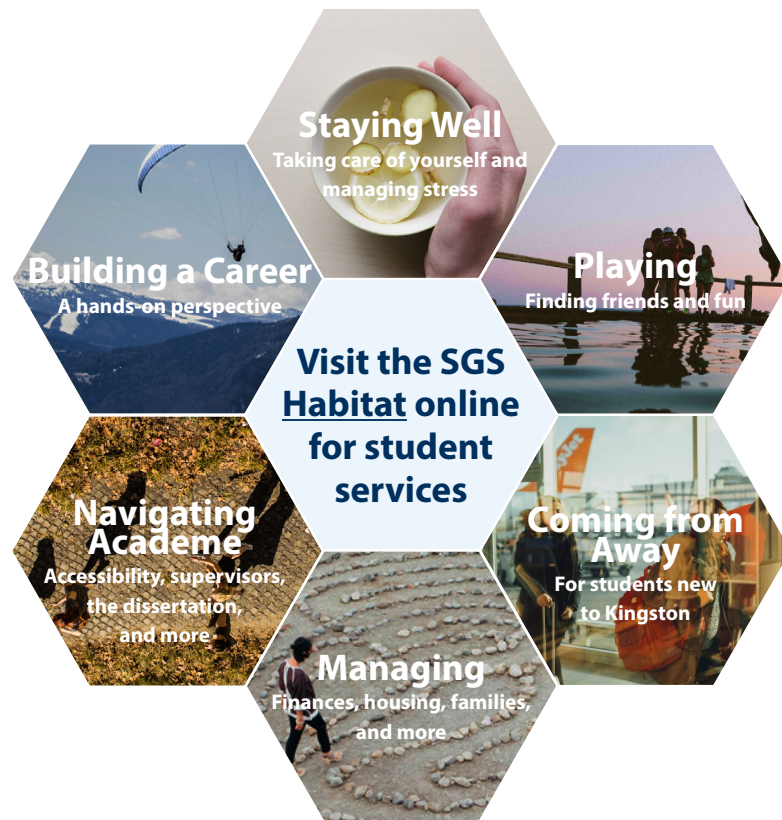
How do I find a supervisor?

Visit the [Epidemiology website](#) to learn about faculty members' research areas. When you find a faculty member with similar research interests to yours, contact him/her and tell them about your interest in graduate work and related experience.

What about funding?

The MSc in Epidemiology does not guarantee a minimum funding amount. The Department provides individual funding packages for full-time students (years 1 and 2) in the program, based upon the student's academic standing and on the sources of money available each year. These packages are funded through a combination of external awards, internal awards, internal departmental awards, faculty support, teaching assistantships, graduate research assistant fellowships, and research assistantships.

Apply for external funding from CIHR, NSERC, OGS, the Heart & Stroke Foundation, CBCF, the Department of Defence, the Canadian Cancer Society and other sources. Queen's will automatically issue a one time \$5,000 top-up to students who are granted a federal tri-council award in their first year of study. For more information, see the School of Graduate Studies' information on awards and scholarships and the department's graduate awards page.

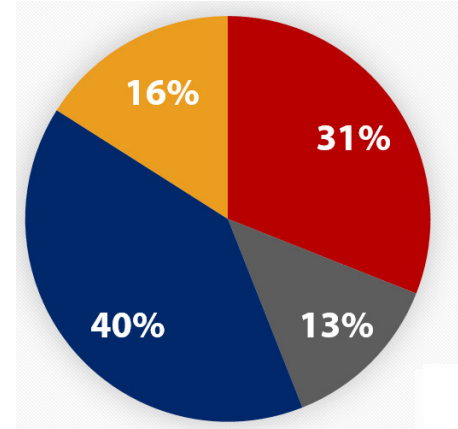


Where Can a Graduate Degree Take Me?

A Master's degree in Epidemiology can take your career in many directions. Many of our MSc students (96%) find jobs within 6 months of graduation. Some choose to continue their academic inquiry with a PhD or an MD. Our Master's students are equipped with a strong foundation for careers in:

- Data Analysis (Health units, government agencies)
- Health research (research associates in universities, hospitals, government, public health units)
- Project management in pharmaceutical and scientific research industries

Taking time to explore career options, build experience, and network can help you have a smooth transition to the world of work after graduation.



M.Sc. Career Outcomes in Health Sciences

- Methodologist/Data/Research/Business Analyst
- Medical Student
- Research Associate/Coordinator
- PhD



EPIDEMIOLOGY

Epidemiology Graduate Program
Department of Public Health Sciences
613.533.2901
epid@queensu.ca
www.queensu.ca/phs

Epidemiology M.Sc. Map

Navigating Graduate Studies and Beyond



GRAD MAP FOR M.SC. STUDENTS →

How do I USE THIS MAP?

Whether you are considering or have embarked on graduate studies at Queen's, use this map to plan for success in five overlapping areas of your career and academic life. The map helps you explore possibilities, set goals and track your individual accomplishments. Everyone's journey is different – the guide offers options for finding your way at Queen's and setting the foundation for your future. To make your own customized map, use the online [My Grad Map](#) tool.

Why GRADUATE STUDIES in EPIDEMIOLOGY?

Graduate students and their work are an important part of the ongoing research process that provides the community with ways of understanding health problems that occur at a local, regional, national, and even global level. Students gain skills to communicate scientifically, describe trends and patterns of disease incidence and prevalence, critically review scientific literature related to community health and epidemiology, collect and analyse data, and more.

The goal of the Master's in Epidemiology program is to provide a common methodological foundation from which to conduct research in human populations across diverse health-related areas. The scope of the field of epidemiology is broad; it includes a range of content areas and methodologies. Depending upon their focus, students learn about various research designs, biostatistics, program evaluation, health economics, as well as how to design surveys or use administrative data.

Why QUEEN'S?

"Combined with the intimate and supportive environment cultivated by the faculty, the Queen's Epidemiology program is an outstanding choice for your graduate career!"

– Atif Kukaswadia, PhD

At Queen's, our established strengths are in the areas of cancer, injury, obesity, disability, and



mental health epidemiology as well as research in various health services contexts including public health, primary care, cancer care and critical care. We also have some emerging strengths in the areas of Northern health, Aboriginal health, and global health studies.

At Queen's, graduate students from all disciplines learn and discover in a close-knit intellectual community. You will find friends, peers and support among the graduate students enrolled in Queen's more than 130 graduate programs within 50+ departments & research centres. With the world's best scholars, prize-winning professional development opportunities, excellent funding packages and life in the affordable, historic waterfront city of Kingston, Queen's offers a wonderful environment for graduate studies.

Why KINGSTON?

Described by students as both "quaint" and "eclectic," Kingston is big enough to provide all the conveniences of modern life, and small enough for students, staff, and faculty to feel instantly comfortable and at home.

Queen's is an integral part of the Kingston community, with the campus nestled in the core of the city, only a 10-minute walk to downtown with its shopping, dining and waterfront. For more about Kingston's history and culture, see Queen's University's [Discover Kingston](#) page.

Program STRUCTURE

MSc (2 years): Course work (4 core courses, 3 electives) and a thesis.

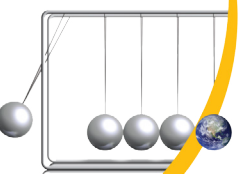
- Part-time studies is an available option.

Research AREAS

- Epidemiology and Population Health
- Health Services and Policy Research
- Clinical Epidemiology

School of
Graduate
Studies
Create an impact

www.queensu.ca/sgs



GETTING STARTED

INTERMEDIATE STAGE

WRAPPING UP

ACHIEVE YOUR ACADEMIC GOALS

- Course work
- Identify a thesis supervisor and research project.
- Consider how your course papers can contribute to your Master's thesis.
- Find your way through the academic process with help from departmental and [Expanding Horizons](#) professional development workshops, the department Grad Chair and the [SGS Habitat](#).

MAXIMIZE RESEARCH IMPACT

- Start to think about the audiences for your research.
- Apply for funding from sources such as CIHR, NSERC, OGS, the Heart & Stroke Foundation, CBCF, the Department of Defence and the Canada Cancer Society Research Institute for your second year of studies.

BUILD SKILLS AND EXPERIENCE

- Consider positions in student services, the [SGPS](#), or media outlets like the [Queen's Journal](#), [CFRC](#), [QTV](#) and the [SGS Blog](#). Look in the [AMS Clubs Directory](#) for more ideas.
- Serve on departmental, faculty or university committees. Talk to the Public Health Sciences Student Association (PHSSA) for tips on getting involved.
- Check out professional development workshops from [Expanding Horizons](#) and the Rehabilitation Science Department.

ENGAGE WITH YOUR COMMUNITY

- Explore how you can connect with your community through experiential opportunities on- and off-campus.
- Consider joining professional associations like the [Canadian Society for Epidemiology and Biostatistics](#) (CSEB).
- Consider volunteering with different community organizations, such as Kingston General Hospital, Hotel Dieu, KFL&A Public Health Unit, and Kingston Community Health Centres.

LAUNCH YOUR CAREER

- Finding a career that fits starts with knowing yourself. Get help by taking the [Career Services Career Planning workshop](#) or meeting with a career counsellor. Check out books like *So What Are You Going to do With That?* for advice on various career options.
- Start reading publications like [University Affairs](#) and the [Chronicle of Higher Education](#). Browse non-academic labour market websites. Stay on the lookout for special events like Graduate Student [Career Week](#) to explore your career pathways.
- Check admission test deadlines if needed for further studies.

- Critically review the scientific literature.
- Design an epidemiologic research study.
- Defend your thesis proposal.
- Begin your research.
- Collect and/or analyze and interpret health data.
- Schedule regular meetings with your supervisor and thesis committee.

- Attend or present at a graduate conference such as the CSEB student conference.
- Consider participating in the [3 Minute Thesis \(3MT\)](#) competition.
- Expand your research audience through social media such as Twitter or a blog.

- Start keeping an eportfolio of your skills, experiences and competencies.
- Use a Research Assistant or Teaching Assistant position to develop your research or teaching skills.
- For help with teaching, get support from the [Centre for Teaching and Learning](#). Enroll in [SGS901](#) or the [PUTL certificate](#) for more professional development in teaching and learning.

- Participate in your graduate and professional community through activities such as graduate student outreach programs, organizing conferences, and research groups like [Material Matters](#).
- Prepare for work or studies in a multi-cultural environment by taking QUIC's [Intercultural Competency Certificate](#).
- International students interested in staying in Canada can speak with an [International Student Advisor](#).

- Explore different careers of interest by reading [alumni profiles](#) on the SGS website, and using [QueensConnects](#) on LinkedIn to connect with Queen's alumni, or find alumni in various careers through "[Ask an Alum](#)".
- Check out the free online modules at [MyGradSkills](#) to help you plan your career.
- If you are considering a PhD, explore programs of interest reach out to faculty, and apply to PhD programs and external scholarships.

- Present your research to Epidemiology graduate students and faculty.
- Choose your thesis format: Traditional or manuscript based.
- Complete and defend your Master's research thesis (EPID 899).

- Consider publishing elements of your research. Learn from the Expanding Horizons [Publishing workshop](#).
- Attend a major conference in your field, such as the CSEB national conference. There are many to choose from, so talk to your supervisor for advice on which ones would be most relevant.

- Practice articulating the skills you have been developing in different forums: casual conversation, networking, interviews. Get help with the [Skills and Experience workshop](#).
- Check out opportunities for extra training through CTL, Expanding Horizons, MITACS, or other sources to boost your skills.
- Investigate internships from [MITACS](#) and [other sources](#).

- Do some targeted networking with people working in careers of interest, through [QueensConnects](#) on LinkedIn, the [Queen's Alumni Association](#), professional associations, and at conferences. Check out Career Services' [networking workshops](#).

- Participate in hiring committees and attend job talks. Research careers of interest. Craft your CV or resume and job application materials.
- Start focusing on areas of interest. Research organizations of interest and start putting together your industry resume and beginning of your job search plan. Get help from Career Services with [job searching](#), [resumes](#), or [interviews](#).

EMPLOYABILITY SKILLS

Specialized skills in molecular, cancer and/or injury epidemiology, child, youth, and rural health

Communication: effective and clear in written, oral and multimedia forms, for diverse audiences

Ethical approaches to health research in human populations

Familiarity with epidemiological research methods; including statistical programming and analysis

Time management: meet deadlines and responsibilities despite competing demands

Project management: develop ideas, gather information, analyze, critically appraise findings, draw and act on conclusions

Creativity and innovation to address complex, multifaceted challenges

Perseverance to work through challenges to achieve desired outcome

Independent as well as **collaborative** worker

Professionalism in all aspects of work, research, and interactions

Leadership: initiative and vision leading people and discussions