

Sociology M.A. Map

Navigating Graduate Studies and Beyond

GRAD MAP FOR M.A. STUDENTS 

How do I **USE THIS MAP?**

Whether you are considering or have embarked on graduate studies at Queen's, use this map to plan for success in five overlapping areas of your career and academic life. The map helps you explore possibilities, set goals and track your individual accomplishments. Everyone's journey is different – the guide offers options for finding your way at Queen's and setting the foundation for your future. To make your own customized map, use the online [My Grad Map](#) tool.

Why **GRADUATE STUDIES** in **SOCIOLOGY?**

In general, a sociological approach engages with usually contemporary social problems and questions from a critical perspective. Students of sociology are trained to critically examine social dynamics and structures, and to engage with the formation of pathways towards social change. Our students at the MA level are trained (theoretically and methodologically) in advanced critical social analysis. Both micro and macro sociological approaches are covered.

The Sociology graduate program at Queen's has particular strengths in socio-legal studies and criminology, critical sociology, and surveillance and digital media. Most of our graduates from the MA program proceed to doctoral programs throughout Canada and beyond. Others move into law, social work, or take up employment in policy analysis and research. Many graduates of the MA program remark on the intimate, supportive and cohesive culture of the Department.

Why **QUEEN'S?**

"Throughout my time here I felt challenged by my coursework and research, but also supported; overall the program offers an ideal environment for the intellectual and professional development of graduate students."

– Isabel Macquarrie, MA

In addition to the benefits of a small department where students receive ample attention from



faculty and staff, inside the classroom and out, Sociology at Queen's offers an annual graduate student conference where MA students who are interested may engage in a typical conference format with many members of faculty and from the graduate program in attendance. Each MA student is guaranteed a minimum of \$14000 per year of annual funding for a maximum of two years. Every student is offered a teaching assistantship.

The Surveillance Studies Centre is a multi-disciplinary and international research centre affiliated with the Department. It offers several speakers series that have attracted leading figures in surveillance, including Edward Snowden. Its current streams include big data surveillance, drones, wearables, and social sorting.

Why **KINGSTON?**

Described by students as both "quaint" and "eclectic," Kingston is big enough to provide all the conveniences of modern life, and small enough for students, staff, and faculty to feel instantly comfortable and at home.

Queen's is an integral part of the Kingston community, with the campus nestled in the core of the city, only a 10-minute walk to downtown with its shopping, dining and waterfront. For more about Kingston's history and culture, see Queen's University's [Discover Kingston](#) page.

Kingston also offers meaningful points of social and political engagement, including prison transitions and reform, local shelters, and other community non-profit organizations.

Program **STRUCTURE**

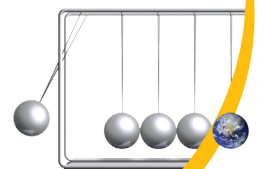
The 2-year Master of Sociology offers 2 methods of completion:

- Method I (Thesis): Two core half courses, two other half courses, and a thesis (about 100 pages) weighted at half of the total program.
- Method II (Essay): Two core half courses, four other half courses, and an essay (about 60 pages) weighted at one-quarter of the total program.

RESEARCH Areas/Streams

- Criminology and Law
- Power, Inequalities and Social Justice
- Media, Information and Surveillance

School of
Graduate
Studies
Create an impact
www.queensu.ca/sgs



GETTING STARTED

INTERMEDIATE STAGE

WRAPPING UP

ACHIEVE YOUR ACADEMIC GOALS

- Start with key priorities like developing your relationship with your supervisor, forming your committee, and doing your coursework.
- Consider how your course papers can contribute to your MA essay or thesis.
- Find your way through the academic process with help from departmental and [Expanding Horizons](#) professional development workshops, the department Grad Chair and the [SGS Habitat](#).

MAXIMIZE RESEARCH IMPACT

- Start to think about the audiences for your research.
- If you will be continuing graduate studies, apply for SSHRC and OGS funding.

BUILD SKILLS AND EXPERIENCE

- Consider positions in student services, the [SGPS](#), or media outlets like the [Queen's Journal](#), [CFRC](#), [QTV](#) and the [SGS Blog](#). Look in the [AMS Clubs Directory](#) for more ideas.
- Serve on departmental or university committees. Talk to the Departmental Committee graduate student representative for tips on getting involved.
- Check out professional development workshops from [Expanding Horizons](#).

ENGAGE WITH YOUR COMMUNITY

- Explore how you can connect with your community through experiential opportunities on- and off-campus.
- Consider volunteering with different community organizations, museums, and cultural studies groups, such as the [Elizabeth Fry Society](#), and the [Boys and Girls Club](#).
- Follow the Sociology Department on [Twitter](#).

LAUNCH YOUR CAREER

- Finding a career that fits starts with knowing yourself. Get help by taking the [Career Services Career Planning workshop](#) or meeting with a career counsellor. Check out books like *So What Are You Going to do With That?* for advice on various career options.
- Start reading publications like [University Affairs](#) and the [Chronicle of Higher Education](#). Browse non-academic labour market websites. Stay on the lookout for special events like Graduate Student [Career Week](#) to explore your career pathways.
- Check admission test deadlines if needed for further studies.

- Complete your coursework; begin to research and write your cognate essay or thesis.

- Attend or present at the Sociology Graduate Student [conference](#).
- Consider participating in the [3 Minute Thesis \(3MT\)](#) competition.
- Expand your research audience through social media such as Twitter or a blog.

- Start keeping an eportfolio of your skills, experiences and competencies.
- Use a Research Assistant or Teaching Assistant position to develop your research or teaching skills.
- For help with teaching, get support from the [Centre for Teaching and Learning](#). Enroll in [SGS901](#) or the [PUTL certificate](#) for more professional development in teaching and learning.

- Participate in your graduate and professional community through activities such as graduate student outreach programs, organizing conferences, and research groups like [Material Matters](#).
- Prepare for work or studies in a multi-cultural environment by taking QUIC's [Intercultural Competency Certificate](#).
- If you are an international student interested in staying in Canada, consider speaking with an [International Student Advisor](#).

- Explore different careers of interest by reading [alumni profiles](#) on the SGS website, and using [QueensConnects](#) on LinkedIn to connect with Queen's alumni, or find alumni in various careers through "[Ask an Alum](#)".
- Check out the free online modules at [MyGradSkills](#) to help you plan your career.
- If you are considering a PhD, explore programs of interest reach out to faculty, and apply to PhD programs and external scholarships.

- Complete your cognate essay or thesis.

- Consider publication options for your research.
- Attend a major conference in your field, such as the [Canadian Sociological Association](#), The American Criminology Society, the Surveillance and Society Conference, the [Society for Social Studies of Science](#), and more.

- Practice articulating the skills you have been developing in settings outside the university, such as casual conversation, networking, and interviews. Get help with the [Skills and Experience workshop](#).
- Check out opportunities for extra training through CTL, Expanding Horizons, Mitacs, or other sources to boost your skills.
- Investigate internships from [Mitacs](#) and [other sources](#).

- Do some targeted networking with people working in careers of interest, through [QueensConnects](#) on LinkedIn, the [Queen's Alumni Association](#), professional associations, and at conferences. Check out Career Services' [networking workshops](#).
- Consider joining professional associations like the [Canadian Sociological Association](#).

- Participate in hiring committees and attend job talks. Start focusing on areas of interest. Research organizations of interest and start putting together your CV or resume for potential positions of interest. Get help from Career Services with [job searching](#), [resumes](#), or [interviews](#).

EMPLOYABILITY SKILLS

Knowledge and technical skills in area of specialization

Communication: effective and clear in written, oral and multimedia forms, for diverse audiences

Information management: prioritize, organize and synthesize large amounts of information

Time management: meet deadlines and responsibilities despite competing demands

Project management: develop ideas, gather information, analyze, critically appraise findings, draw and act on conclusions

Creativity and innovation to address complex, multifaceted challenges

Perseverance to work through challenges to achieve desired outcome

Independence and experience as a **collaborative** worker

Awareness and understanding of sound **ethical** practices, **social responsibility**, responsible research and **cultural sensitivity**

Professionalism in all aspects of work, research, and interactions

Leadership: initiative and vision leading people and discussions

M.A. Map FAQs

What do I need to know to apply?

ACADEMIC REQUIREMENTS

- Honours B.A. in Sociology (or equivalent).
- **Grade requirements:** minimum B+ average over all 4 years of undergraduate study.

ADDITIONAL REQUIREMENTS

- Writing sample and an Extended Statement of Interest.
- If English is not a native language, prospective students must meet the **TOEFL requirements** in writing, speaking, reading, and listening.

KEY DATES & DEADLINES

- **Application deadline:** February 1 is the deadline for internal awards, but applications will be accepted beyond this date.
- **Notification of acceptance:** starts at the end of February.

Before you start your application, please review the [Graduate studies application process](#).

How do I find a supervisor?

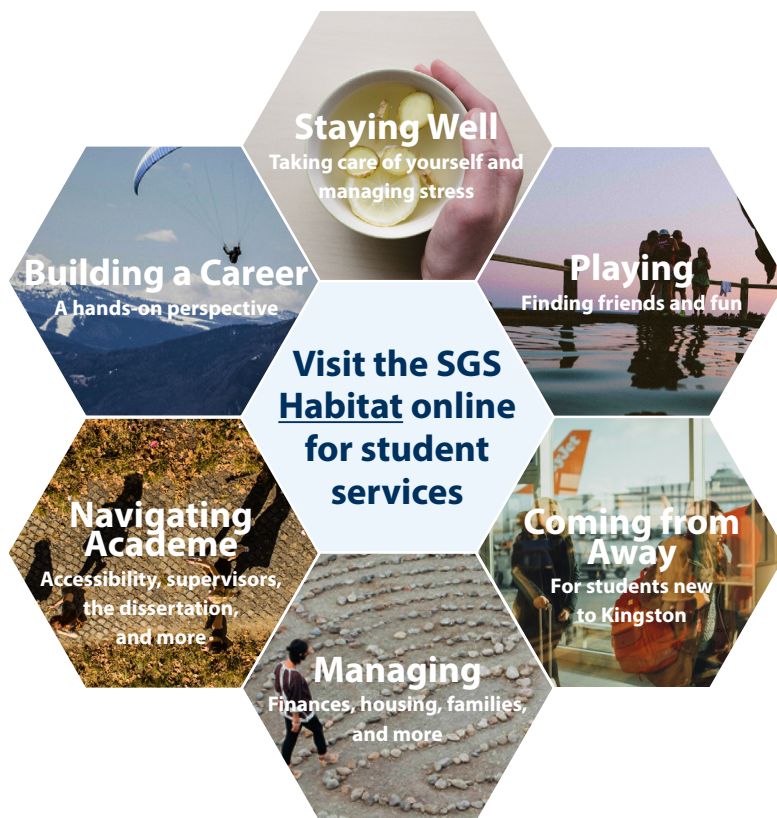
We encourage you to identify an area of research interest and contact a potential supervisor before applying.

Visit the Sociology Department website to read [faculty profiles](#) and learn more about faculty members' research areas. When you find a faculty member with similar research interests to yours, contact him/her and tell them about your interest in graduate work and related experience.

What about funding?

M.A. students in Sociology receive funding for the two years of the program, with a minimum of \$14,000 per year. The basic funding package includes graduate awards and teaching assistantships.

Apply for external funding from OGS, SSHRC and other sources. Queen's will automatically issue a \$5,000 top-up to Masters winners of federal government tri-council awards. For more information, see the School of Graduate Studies' information on [awards and scholarships](#), or see what awards are offered through the Sociology Department.

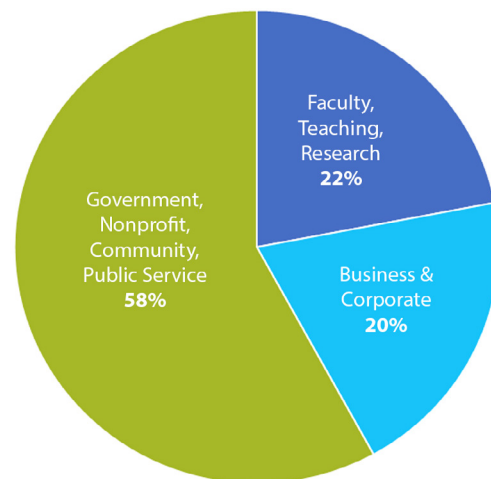


Where Can a Graduate Degree Take Me?

A Master's degree in Sociology can take your career in many directions. Many of our MA students choose to continue their academic inquiry with a PhD. Our Master's students are equipped with a strong foundation for careers in:

- Academia and research
- Foreign service
- Government services
- Law
- Social Work
- Teaching

Taking time to explore career options, build experience, and network can help you have a smooth transition to the world of work after graduation.



M.A. Career Outcomes in the Social Sciences

Council of Graduate Schools and Educational Testing Service. (2012). Pathways Through Graduate School and Into Careers. Princeton, NJ: Educational Testing Service.

Queen's
UNIVERSITY

DEPARTMENT OF
SOCIOLOGY

Department of Sociology
613.533.6684
socygrad@queensu.ca
www.queensu.ca/sociology