

Education MEd Map

Applying to and Navigating Graduate Studies

GRAD MAP FOR MEd STUDENTS 

Why GRADUATE STUDIES in EDUCATION?

Our graduate programs are designed to develop and support innovative research in education. Our Master of Education (MEd) program will advance your knowledge and career in the field of education. By working with our outstanding researchers and experts, you will develop critical reflection, innovative research, writing, teaching, and leadership skills. Our MEd program gives you the flexibility to choose your research focus. We offer a diverse range of courses and program formats. We will support you in designing a program that achieves your learning and research goals.

Why QUEEN'S?

Queen's University has an active and vibrant graduate student community. Our Faculty of Education brings together diverse perspectives on education, fostering multidisciplinary expertise within an active collaborative research community. Our research leads to new knowledge and understandings about teaching and learning, and progressive changes in educational policies and practices. As a researcher at Queen's, you will have opportunities to engage in outreach initiatives in the community and in local, national, and international partnerships.



We leverage expertise, collaborations, and partnerships across the Queen's research community and the educational profession.

Visit the Faculty of Education website to learn more about the Master of Education program.

Program STRUCTURE

We offer two program paths:

- 6 courses plus a research thesis
- 8 courses plus a research project

RESEARCH Areas

- Assessment and Evaluation
- Curriculum Studies
- Early Childhood Education
- History and Philosophy of Education
- Language and Literacy
- Leadership and Policy Studies
- Learning Exceptionalities
- Math, Science and Technology in Education
- Social Justice and Inclusion
- Special Education

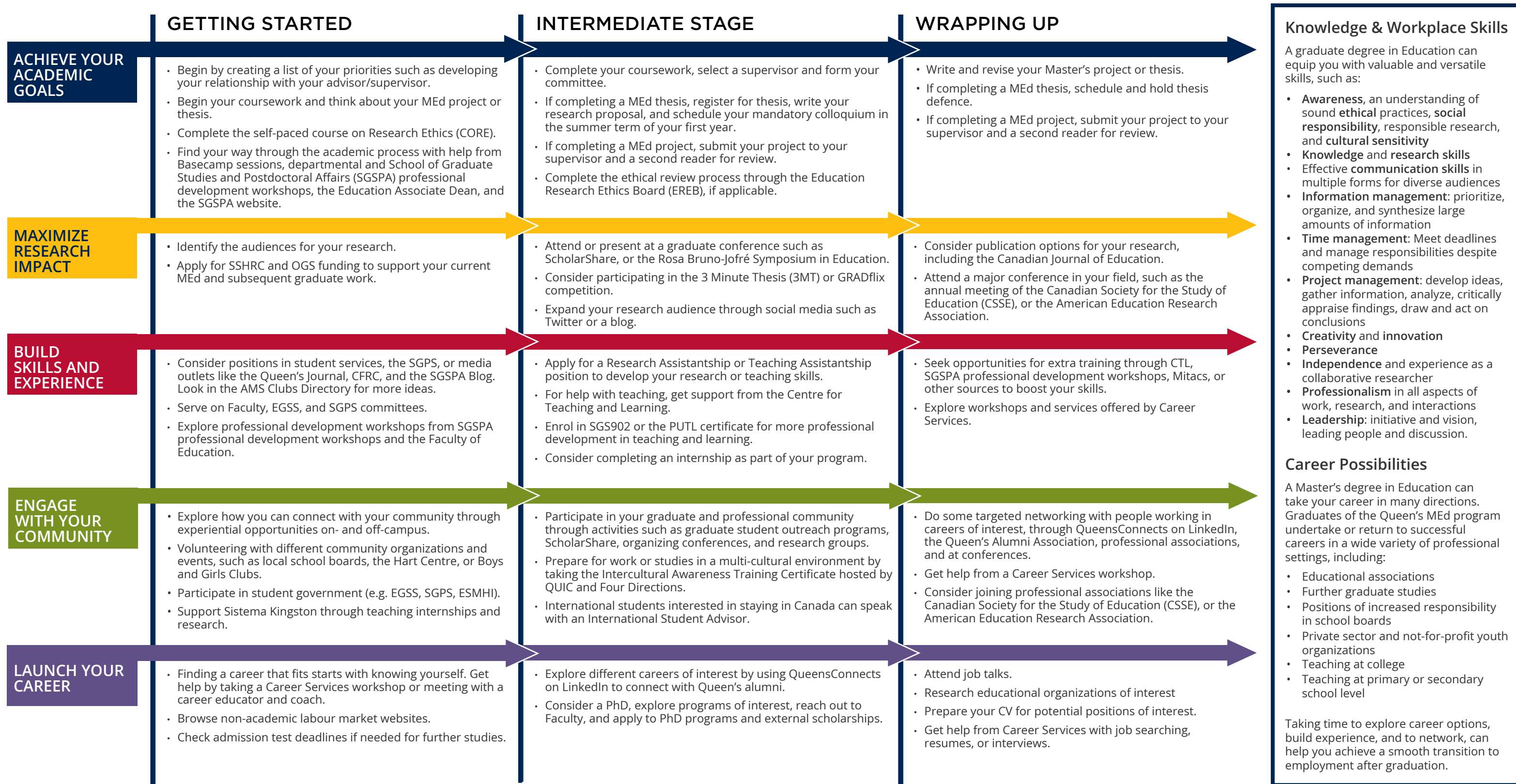


GRADUATE STUDIES AND
POSTDOCTORAL AFFAIRS

queensu.ca/grad-postdoc

Education MEd Map

MASTER OF EDUCATION (MEd)



How to use this map

Use the 5 rows of the map to explore possibilities and plan for success in the five overlapping areas of career and academics. To make your own custom map, use the My Grad Map tool: careers.queensu.ca/gradmaps.

Graduate Studies FAQs

How do I make the most of my time at Queen's?

Use the Grad Map to plan for success in five overlapping areas of your career and academic life. Everyone's journey is different - the ideas on the maps are just suggestions to help you explore possibilities. For more support with your professional development, take advantage of the SGSPA professional development framework and the new Professional Development Plan (PDP) process to set customized goals to help you get career ready when you graduate.

Where can I get help?

Queen's provides you with a broad range of support services from your first point of contact with the university, through to graduation. Ranging from help with academics and careers, to physical, emotional, or spiritual resources, our welcoming environment offers the programs and services you need to be successful, both academically and personally. Check out the SGSPA website for available resources.

What is the community like?

At Queen's, graduate students from all disciplines learn and discover in a close-knit intellectual community. With over 130 graduate programs throughout more than 50 departments and research centres, you will find friends, peers and support among our graduate students. With the world's best scholars, prize-winning professional development opportunities, excellent funding packages and life in the affordable, historic waterfront city of Kingston, Queen's offers a wonderful environment for graduate studies. Queen's is an integral part of the Kingston community, with the campus nestled in the core of the city, only a 10-minute walk to downtown with its shopping, dining and waterfront. For more about Kingston's history and culture, see Queen's University's Discover Kingston page.

Application FAQs

What do I need to know to APPLY?

APPLICATION REQUIREMENTS

To be considered for admission to the Master of Education program, applicants must provide evidence of:

- A minimum of a mid-B average in a 4-year Bachelor's degree or its equivalent, or a BEd degree and a minimum of a B- average in a Bachelor's degree or its equivalent.
- Professional experience and/or an Honours degree are considered assets.

ADDITIONAL REQUIREMENTS

- Applicants whose native languages do not include English must obtain a passing score in one of the accepted tests of English language proficiency. Information can be found in the General Regulations of the School of Graduate Studies
- Persons who are uncertain if they are eligible for admission to the MEd program are encouraged to contact the Graduate Studies Office at the Faculty of Education.

KEY DATES & DEADLINES

- Application due: January 15th
- Notification of acceptance: Late February

Before you start your application, please review the School of Graduate Studies and Postdoctoral Affairs application process.

What about FUNDING?

All eligible full-time graduate students who request funding (financial support) as part of their initial application can expect to receive a funding offer to help them with the costs associated with their graduate studies in the Faculty of Education.

Funding packages are awarded to students based on academic merit and they may consist of any or a combination of the following: scholarships, fellowships, external awards the student may bring with them, internal awards, research assistantships, or teaching assistantships. The Faculty also offers funding for presenting at conferences.

Apply for external funding from OGS, SSHRC/NSERC, and other sources. Queen's will automatically issue a one time \$5,000 top-up to Master's winners of federal government tri-council awards. For more information, see the School of Graduate Studies and Postdoctoral Affairs' information on awards and scholarships and the Faculty of Education's funding information.

