

Geological Sciences PhD Map

Applying to and Navigating Graduate Studies

GRAD MAP FOR PhD STUDENTS 

Why GRADUATE STUDIES in GEOLOGICAL SCIENCES?

Geoscientists and geological engineers interpret the natural world. They bring methods such as geophysics, geochemistry, geobiology, and field geology together to understand the modern and ancient Earth. Clues concealed in rocks and minerals, fluids and fossils, mountains and sediments, glaciers, and volcanoes are marshaled to understand and explain the Earth system at all scales. Managing water, mineral and energy resources, designing sustainable strategies for infrastructure and industrial growth, and coping with natural and anthropogenic hazards facing increasing global populations, including climate change, all depend on a deep understanding of natural processes.

"The PhD experience in geology at Queen's has been a key step in my academic career. It has been a meaningful and rewarding experience, allowing me to achieve my inner goals, besides allowing me to be in contact with a great team of experts in the field"

– Tassiane Junquiera, PhD

Why QUEEN'S?

As a PhD student in Geological Science you are part of one of the most research intensive universities in Canada. Our research program is internationally renowned with a wide range of research activities in all the major specialization areas in geological science.

Students are able to work in first-rate facilities with world-renowned scientists and research engineers, and have opportunities to collaborate with industrial leaders and engage in extensive fieldwork on six continents, making our



program truly a world-class experience. Students can also collaborate with other departments at Queen's, including Mining, Environmental Studies, Chemistry, and Biology as well as other institutions like RMC.

contact them and tell them about your interest in graduate work and related experience. This is also an opportunity for you to find out if the faculty member is accepting new graduate students to supervise.

Program STRUCTURE

PhD (4 years): Thesis. The department has no minimum formal course requirement (beyond the MSc program requirements).

RESEARCH Areas

- Applied Geoenvironmental Sciences & Geotechnique
- Economic Geology & Mineral Exploration
- Geophysics and Geochronology
- Petrology & Structural Geology
- Sedimentology, Sedimentary Geochemistry & Paleobiology

We encourage you to identify an area of research interest and contact a potential supervisor before applying.

Visit the Geological Sciences Department website to read faculty profiles and learn more about faculty members' research areas. When you find a faculty member with similar research interests to yours,

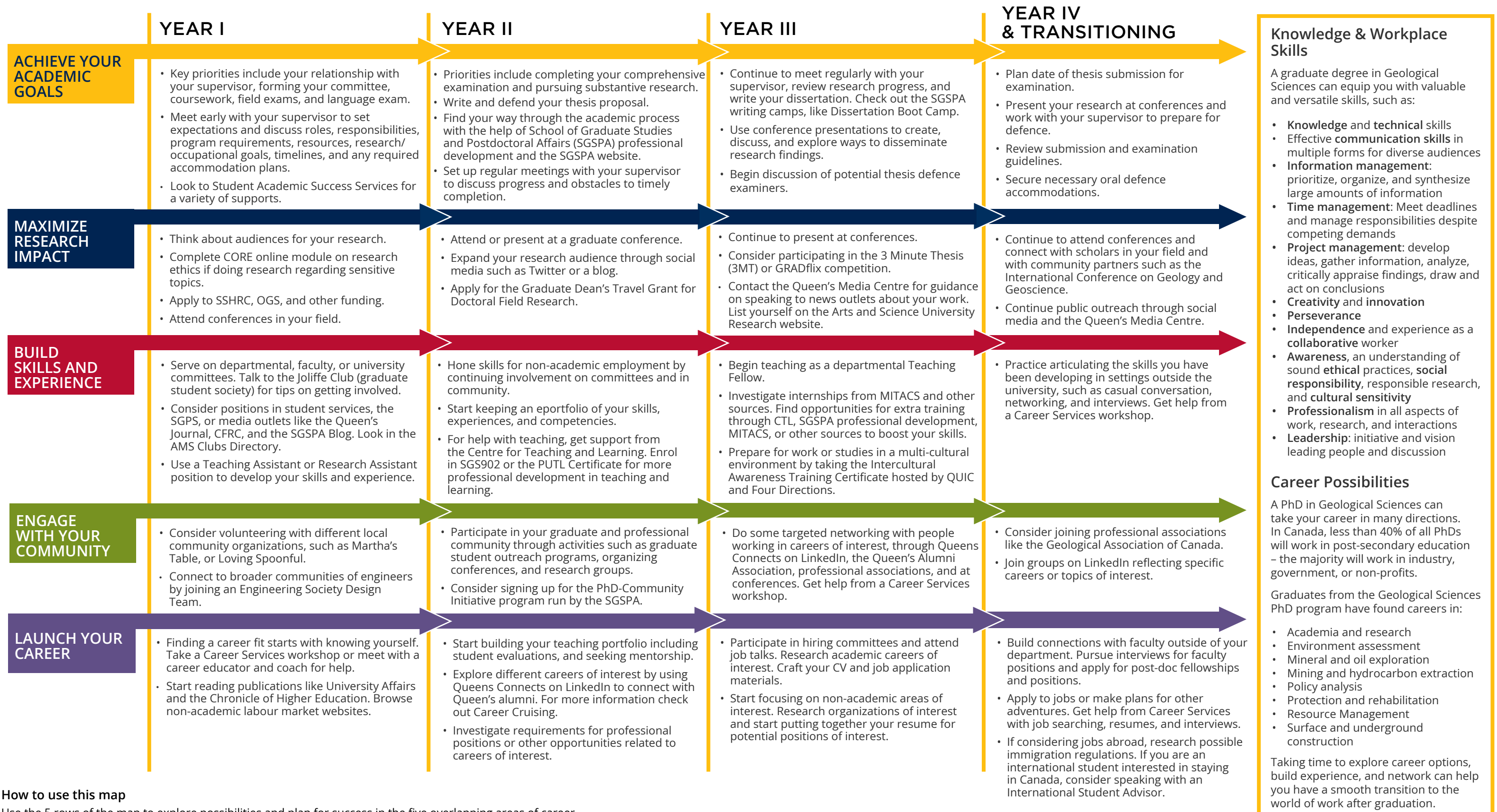


GRADUATE STUDIES AND
POSTDOCTORAL AFFAIRS

queensu.ca/grad-postdoc

Geological Sciences PhD Map

DOCTOR OF PHILOSOPHY (PhD)



How to use this map
 Use the 5 rows of the map to explore possibilities and plan for success in the five overlapping areas of career and academics. To make your own custom map, use the My Grad Map tool: careers.queensu.ca/gradmaps.

Graduate Studies FAQs

How do I make the most of my time at Queen's?

Use the Grad Map to plan for success in five overlapping areas of your career and academic life. Everyone's journey is different - the ideas on the maps are just suggestions to help you explore possibilities. For more support with your professional development, take advantage of the SGSPA professional development framework and the new Professional Development Plan (PDP) process to set customized goals to help you get career ready when you graduate.

Where can I get help?

Queen's provides you with a broad range of support services from your first point of contact with the university through to graduation. Ranging from help with academics and careers, to physical, emotional, or spiritual resources - our welcoming environment offers the programs and services you need to be successful, both academically and personally. Check out the SGSPA website for available resources.

What is the community like?

At Queen's, graduate students from all disciplines learn and discover in a close-knit intellectual community. You will find friends, peers and support among the graduate students enrolled in Queen's more than 130 graduate programs within 50+ departments & research centres. With the world's best scholars, prize-winning professional development opportunities, excellent funding packages and life in the affordable, historic waterfront city of Kingston, Queen's offers a wonderful environment for graduate studies. Queen's is an integral part of the Kingston community, with the campus nestled in the core of the city, only a 10-minute walk to downtown with its shopping, dining and waterfront. For more about Kingston's history and culture, see Queen's University's Discover Kingston page.

Application FAQs

What do I need to know to APPLY?

ACADEMIC REQUIREMENTS

- MSc in Geological Sciences or Geological Engineering, Mining Engineering, or Civil Engineering are acceptable.
- **Grade requirements:** minimum B average.

ADDITIONAL REQUIREMENTS

- If English is not a native language, prospective students must meet the English language proficiency requirements in writing, speaking, reading, and listening. The following minimum scores are required: (1) TOEFL iBT: Writing (24/30); Speaking (22/30); Reading (22/30); Listening (20/30). Applicants must have the minimum score in each test as well as the minimum overall score, or (2) IELTS: 7.0 (academic module overall band score and a 7.0 for each test band), or (3) PTE Academics: 65, or (4) CAEL CE -70 (minimum overall score).

KEY DATES & DEADLINES

- **Application deadline:** February 1 for September submissions.
- **Notification of acceptance:** 4 weeks after the full application has been received.

Before you start your application, please review the Graduate studies application process.

What about FUNDING?

The minimum funding guarantee for Geological Sciences PhD students is \$23,000 per year for domestic students and \$30,000 for international students throughout years 1-4. Research Assistantships are in consultation with the student's supervisor.

We encourage all students to apply for external funding from OGS, NSERC, and other sources. For the 2025-26 academic year, Queen's will automatically issue a one time \$5,000 award to Doctoral students who have won federal government tri-council awards. For more information, see the School of Graduate Studies and Postdoctoral Affairs' information on awards and scholarships.



Queen's
UNIVERSITY

DEPARTMENT OF
GEOLOGICAL SCIENCES &
GEOLOGICAL ENGINEERING

Kelly McCaugherty, Graduate Assistant

(613) 533-2597

geolgradassistant@queensu.ca

queensu.ca/geol/graduate