

# Sociology MA Map

## Applying to and Navigating Graduate Studies

GRAD MAP FOR MA STUDENTS 

### Why GRADUATE STUDIES in SOCIOLOGY?

The MA program in Sociology at Queen's provides advanced training for students seeking to critically examine the social world at every level, and to engage with the formation of pathways towards social change. Students are well supported to develop their theoretical knowledge and methodological skills through a combination of well-designed courses and research opportunities under expert supervision. The department is particularly well known for its strengths in criminology and the law; media, information, and surveillance; power, inequalities, and social justice.

The MA program equips students with the essential research skills in analytic thinking and data analysis, alongside communication and presentational competencies that are highly valuable for a range of careers. Our graduates often pursue doctoral research throughout Canada and beyond, or establish careers in law, media, education, development, marketing, social work, corrections, policy analysis, and research. Graduates of the MA program remark on the intimate, supportive, and cohesive culture of the department, with small classes and close supervision.

### Why QUEEN'S?

Our award-winning faculty are recognized as academic leaders in their fields, conducting a wide range of funded research programs that enhance the classroom experience and provide opportunities for collaborative research and training. In addition to the benefits of a small department where students receive close supervision and support from faculty and staff, Sociology at Queen's offers an annual graduate student conference where MA students can develop their organizational skills and present their research within a collegial and collaborative environment with faculty and other graduate students.



Our students also have unique opportunities to engage with local institutions, communities, and services. Because of the significance that Kingston holds in the federal penal system, there are many local associations concerned with prison transitions and reform. Some of our graduate's work with the Elizabeth Frye Society, while others work within local prisons, or with local shelters for women. More broadly, graduate students at Queen's gain the benefits of a close-knit intellectual community, competitive funding packages, and a lively city full of stimulating events, experiences, and opportunities.

### Program STRUCTURE

The Master of Sociology offers three (3) pathways to completion:

•Pattern I (Thesis): Students are required to complete six courses and write a thesis of 25,000 words and defend it before a committee of examiners (12-24 months).

•Pattern II (A) (Essay): Students are required to complete six courses and write an extended essay of 10,000-12,000 words (12 months).

•Pattern II (B) (Experiential): Students are required to complete four courses, 72 hours of experiential learning in a community-based setting, and a report of 10,000-12,000 words (12 months).

*"Choosing the MA program in the Department of Sociology at Queen's was a great decision. Faculty and staff make an exceptional effort to foster a sense of community both inside and outside the classroom, as well as support students individually in their coursework and research."*

*– Joe Stieb, recent MA Graduate*

### RESEARCH Areas/Streams

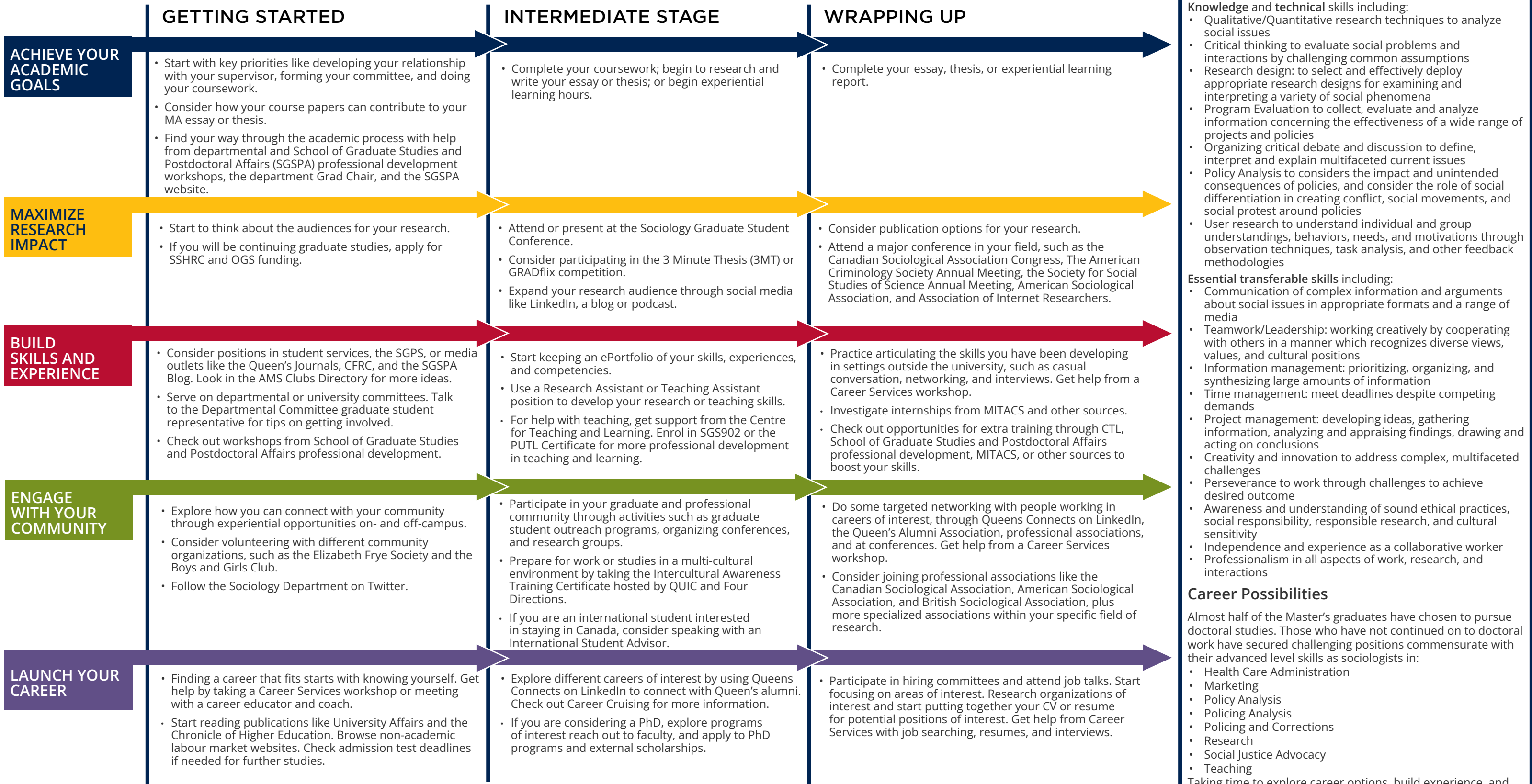
- Criminology and Law
- Power, Inequalities, and Social Justice
- Media, Information and Surveillance

Visit the Sociology Department website to read faculty profiles and learn more about faculty members' research areas.



**GRADUATE STUDIES AND POSTDOCTORAL AFFAIRS**

[queensu.ca/grad-postdoc](https://queensu.ca/grad-postdoc)



### Knowledge & Workplace Skills

**Knowledge and technical skills including:**

- Qualitative/Quantitative research techniques to analyze social issues
- Critical thinking to evaluate social problems and interactions by challenging common assumptions
- Research design: to select and effectively deploy appropriate research designs for examining and interpreting a variety of social phenomena
- Program Evaluation to collect, evaluate and analyze information concerning the effectiveness of a wide range of projects and policies
- Organizing critical debate and discussion to define, interpret and explain multifaceted current issues
- Policy Analysis to considers the impact and unintended consequences of policies, and consider the role of social differentiation in creating conflict, social movements, and social protest around policies
- User research to understand individual and group understandings, behaviors, needs, and motivations through observation techniques, task analysis, and other feedback methodologies

**Essential transferable skills including:**

- Communication of complex information and arguments about social issues in appropriate formats and a range of media
- Teamwork/Leadership: working creatively by cooperating with others in a manner which recognizes diverse views, values, and cultural positions
- Information management: prioritizing, organizing, and synthesizing large amounts of information
- Time management: meet deadlines despite competing demands
- Project management: developing ideas, gathering information, analyzing and appraising findings, drawing and acting on conclusions
- Creativity and innovation to address complex, multifaceted challenges
- Perseverance to work through challenges to achieve desired outcome
- Awareness and understanding of sound ethical practices, social responsibility, responsible research, and cultural sensitivity
- Independence and experience as a collaborative worker
- Professionalism in all aspects of work, research, and interactions

### Career Possibilities

Almost half of the Master's graduates have chosen to pursue doctoral studies. Those who have not continued on to doctoral work have secured challenging positions commensurate with their advanced level skills as sociologists in:

- Health Care Administration
- Marketing
- Policy Analysis
- Policing Analysis
- Policing and Corrections
- Research
- Social Justice Advocacy
- Teaching

Taking time to explore career options, build experience, and network can help you have a smooth transition to the world of work after graduation. Visit the Department of Sociology website to find out more about where the degree can take you.

**How to use this map**  
 Use the 5 rows of the map to explore possibilities and plan for success in the five overlapping areas of career and academics. To make your own custom map, use the My Grad Map tool: [careers.queensu.ca/gradmaps](https://careers.queensu.ca/gradmaps).

# Graduate Studies FAQs

## How do I make the most of my time at Queen's?

Use the Grad Map to plan for success in five overlapping areas of your career and academic life. Everyone's journey is different - the ideas on the maps are just suggestions to help you explore possibilities. For more support with your professional development, take advantage of the SGSPA professional development framework and the new Professional Development Plan (PDP) process to set customized goals to help you get career ready when you graduate.

## Where can I get help?

Queen's provides you with a broad range of support services from your first point of contact with the university through to graduation. Ranging from help with academics and careers, to physical, emotional, or spiritual resources - our welcoming environment offers the programs and services you need to be successful, both academically and personally. Check out the SGSPA website for available resources.

## What is the community like?

At Queen's, graduate students from all disciplines learn and discover in a close-knit intellectual community. You will find friends, peers and support among the graduate students enrolled in Queen's more than 130 graduate programs within 50+ departments & research centres. With the world's best scholars, prize-winning professional development opportunities, excellent funding packages and life in the affordable, historic waterfront city of Kingston, Queen's offers a wonderful environment for graduate studies. Queen's is an integral part of the Kingston community, with the campus nestled in the core of the city, only a 10-minute walk to downtown with its shopping, dining and waterfront. For more about Kingston's history and culture, see Queen's University's Discover Kingston page.

# Application FAQs

## What do I need to know to APPLY?

### ACADEMIC REQUIREMENTS

- BA Honours undergraduate degree in Sociology or equivalent with a minimum B+ standing.

### ADDITIONAL REQUIREMENTS

- Writing Sample
- Curriculum Vitae (CV)
- Statement of Interest

### KEY DATES & DEADLINES

- **Application due:** January 25th
- **Notification of acceptance:** Late February

Before you start your application, please review the Graduate studies application process.

## What about FUNDING?

All eligible full-time graduate students who request funding (financial support) as part of their initial application can expect to receive a funding offer to help them with the costs associated with their graduate studies in the Department of Sociology.

The minimum guaranteed funding package for MA students is \$16,000 per year for two years. It is important to note that they are encouraged to apply for all major external and internal (where appropriate) scholarships for which they are eligible.

Funding packages may consist of any or a combination of the following: scholarships, fellowships, external awards, internal awards, teaching assistantships, or research assistantships. The Department also offers funding for participation in conferences.

Apply for external funding from OGS, SSHRC/NSERC, and other sources. Queen's will automatically issue a one time \$5,000 award to incoming Masters students who have won federal government tri-council awards. For more information, see the School of Graduate Studies and Postdoctoral Affairs' information on awards and scholarships and the Department of Sociology funding information.



**Celina Caswell, Graduate Assistant**  
(613) 533-6684  
socygrad@queensu.ca  
queensu.ca/sociology