

# Aging and Health PhD Map

## Applying to and Navigating Graduate Studies

GRAD MAP FOR PhD STUDENTS



### Why GRADUATE STUDIES in AGING AND HEALTH?

Graduate studies in Aging and Health are offered through innovative programs that provide participants with a comprehensive understanding of aging, with a focus on health and healthy living. Students will develop multi-disciplinary knowledge of individual aging processes, the effect of aging on social systems, and the policies needed to support healthy aging. The program is meant to enhance students' ability to contribute to the development, delivery and implementation of evidence-based care, services, and policies for older adults across a range of settings.

### Why QUEEN'S?

The program is full-time and is completed mostly from a distance, through a blended format of on-line and in-person learning. Intensive on-site sessions introduce students to core courses and e-learning technology, as well as provide an opportunity for in-person interaction with faculty and fellow class members. Elective courses are completed at a distance, online. The blended format of on-site intensives and online components couples networking and experiential opportunities with the flexibility of distance learning.

Queen's University programs in Aging and Health position graduates for success in a variety of settings that serve the growing population of older adults including



*"I loved the Aging and Health program at Queens University! The flexibility of being able to stay in my home province of PEI was wonderful. The professors and other students were so supportive and I made lifelong friends. I also enjoyed the in-person sessions twice a year."*

*- Mary Beth MacLean, PhD*

government, universities and colleges, for-profit and non-profit organizations, business and industry, and various healthcare settings.

### Program STRUCTURE

**PhD (4 years, full time):** Course work consisting of 4 courses (normally including 2 core courses), comprehensive exam, thesis and defense.

### Core COURSES

- **AGHE 901** Knowledge Translation and Uptake
- **AGHE 903** Critical Analysis of Theories of Aging

We encourage you to identify an area of research interest and contact a potential supervisor before applying.



Visit the [Aging and Health website](https://www.queensu.ca/grad-postdoc) to read faculty profiles, and learn more about faculty members' research areas. When you find a faculty member with similar research interests to yours, contact them and tell them about your interest in graduate work, area of research interest, and related experience.



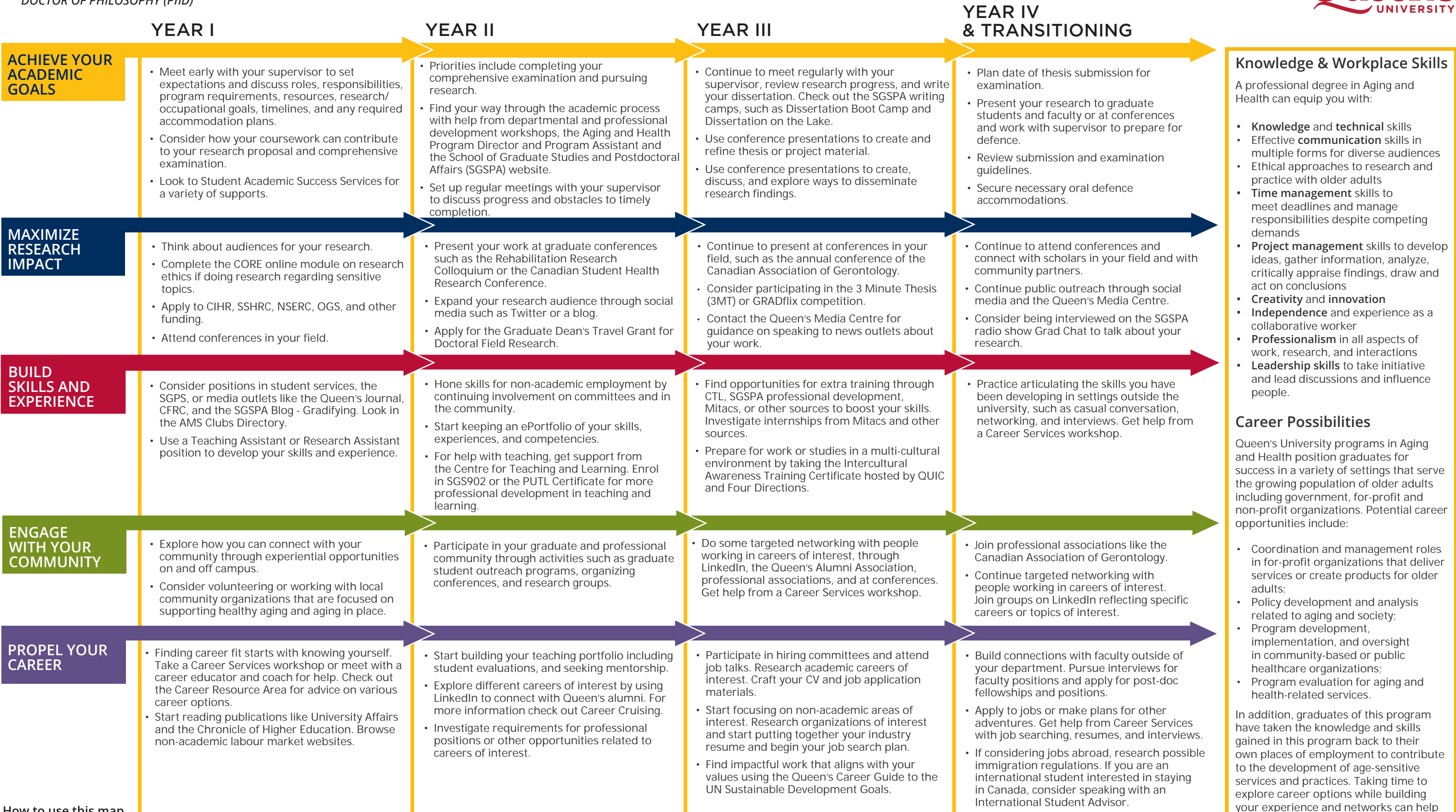
**Queen's**  
UNIVERSITY

**GRADUATE STUDIES AND  
POSTDOCTORAL AFFAIRS**

[queensu.ca/grad-postdoc](https://queensu.ca/grad-postdoc)

# Aging and Health PhD Map

DOCTOR OF PHILOSOPHY (PhD)



## Knowledge & Workplace Skills

A professional degree in Aging and Health can equip you with:

- Knowledge** and **technical** skills
- Effective **communication** skills in multiple forms for diverse audiences
- Ethical approaches to research and practice with older adults
- Time management** skills to meet deadlines and manage responsibilities despite competing demands
- Project management** skills to develop ideas, gather information, analyze, critically appraise findings, draw and act on conclusions
- Creativity** and **innovation**
- Independence** and experience as a collaborative worker
- Professionalism** in all aspects of work, research, and interactions
- Leadership skills** to take initiative and lead discussions and influence people.

## Career Possibilities

Queen's University programs in Aging and Health position graduates for success in a variety of settings that serve the growing population of older adults including government, for-profit and non-profit organizations. Potential career opportunities include:

- Coordination and management roles in for-profit organizations that deliver services or create products for older adults;
- Policy development and analysis related to aging and society;
- Program development, implementation, and oversight in community-based or public healthcare organizations;
- Program evaluation for aging and health-related services.

In addition, graduates of this program have taken the knowledge and skills gained in this program back to their own places of employment to contribute to the development of age-sensitive services and practices. Taking time to explore career options while building your experience and networks can help you have a smooth transition to the world of work after graduation.

### How to use this map

Use the 5 rows of the map to explore possibilities and plan for success in the five overlapping areas of career and academics. To make your own custom map, use the My Grad Map tool: [careers.queensu.ca/gradmaps](https://careers.queensu.ca/gradmaps).



# Graduate Studies FAQs

## How do I use this map?

Use the Grad Map to plan for success in five overlapping areas of your career and academic life. Everyone's journey is different - the ideas on the maps are just suggestions to help you explore possibilities. For more support with your professional development, take advantage of the SGSPA professional development framework and the new Professional Development Plan (PDP) process to set customized goals to help you get career ready when you graduate.

## Where can I get help?

Queen's provides you with a broad range of support services from your first point of contact with the university through to graduation. Ranging from help with academics and careers, to physical, emotional, or spiritual resources – our welcoming environment offers the programs and services you need to be successful, both academically and personally. Check out the [SGSPA website](#) for available resources.

## What is the community like?

At Queen's, graduate students from all disciplines learn and discover in a close-knit intellectual community. You will find friends, peers and support among the graduate students enrolled in Queen's more than 130 graduate programs within 50+ departments & research centres. With the world's best scholars, prize-winning professional development opportunities, excellent funding packages and life in the affordable, historic waterfront city of Kingston, Queen's offers a wonderful environment for graduate studies. Queen's is an integral part of the Kingston community, with the campus nestled in the core of the city, only a 10-minute walk to downtown with its shopping, dining and waterfront. For more about Kingston's history and culture, see Queen's University's Discover Kingston page.

# Application FAQs

## What do I need to know to APPLY?

### ACADEMIC REQUIREMENTS

- Completion of a Master's degree in a related field with a minimum B+ standing. Contact the program director and potential supervisors to discuss how your studies and experiences to date may be related to the Aging and Health program studies.
- The entire transcript is reviewed but particular attention is given to your last 20 courses and how well you have progressed throughout your academic career. Preference is given to students with higher academic standing.

### ADDITIONAL REQUIREMENTS

- Two references.
- Two Official Transcripts.
- Current CV.
- Statement of Interest.
- If English is not a native language, prospective students must meet the English language proficiency requirements in writing, speaking, reading, and listening. The following minimum scores are required: (1) TOEFL iBT: Writing (24/30); Speaking (22/30); Reading (22/30); Listening (20/30). Applicants must have the minimum score in each test as well as the minimum overall score, or (2) IELTS: 7.0 (academic module overall band score and a 7.0 for each test band), or (3) PTE Academics: 65, or (4) CAEL CE -70 (minimum overall score).

### KEY DATES & DEADLINES

- **Application deadline:** February 15.
- Decisions will be made following that date.

Before you start your application, please review the Graduate studies application process.

## What about FEES?

Visit the Office of the University Registrar webpage for more information on program fees.

Visit the School of Graduate Studies and Postdoctoral Affairs website for more information on external funding.



**Aging and  
Health Programs**

Caitlin MacDonald  
Research & Post Professional Programs Graduate Assistant  
Email: [caitlin.macdonald@queensu.ca](mailto:caitlin.macdonald@queensu.ca)  
<https://rehab.queensu.ca/academic-programs/aghe/doctorate-phd>