

Civil Engineering MEng Map

Applying to and Navigating Graduate Studies

Why GRADUATE STUDIES in CIVIL ENGINEERING?

As a Master's student in the field of Civil Engineering, you can play a vital role in future developments in such areas as design of foundations, water quality, sediment transportation, pipeline flow, construction and rehabilitation of structures, and many other areas. Civil Engineering has a wide range of applications that contribute to modern life and its infrastructure.

Graduate students and their work are an important part of an ongoing research process that provides the community with ways of understanding natural, cultural, imaginative, social, and technological phenomena.

Why QUEEN'S?

As a Master's student in Civil Engineering at Queen's you are part of one of the most research intensive universities in Canada. Our research program is internationally renowned with a wide range of research activities in all of the major specialization areas of Civil Engineering.

The Queen's graduate programs in Civil Engineering are home to some of the finest minds in the fields of civil and environmental engineering. Students have the chance to study engineering in an environment where multidisciplinary research and activities are encouraged and facilitated.



GRAD MAP FOR MEng STUDENTS 

The Civil Engineering Department's objective is to provide a broadly-based education in civil engineering which is intrinsically supported by world-class research in the areas of Structural, Geotechnical, Hydrotechnical, and Environmental Engineering.

STUDY Areas

- Environmental Engineering
- Geotechnical Engineering
- Hydrotechnical Engineering
- Structural Engineering

Visit the [Civil Engineering website](#) to read course descriptions.

Program STRUCTURE

MEng (1 year): Complete 8 term length courses pre-approved by the department.

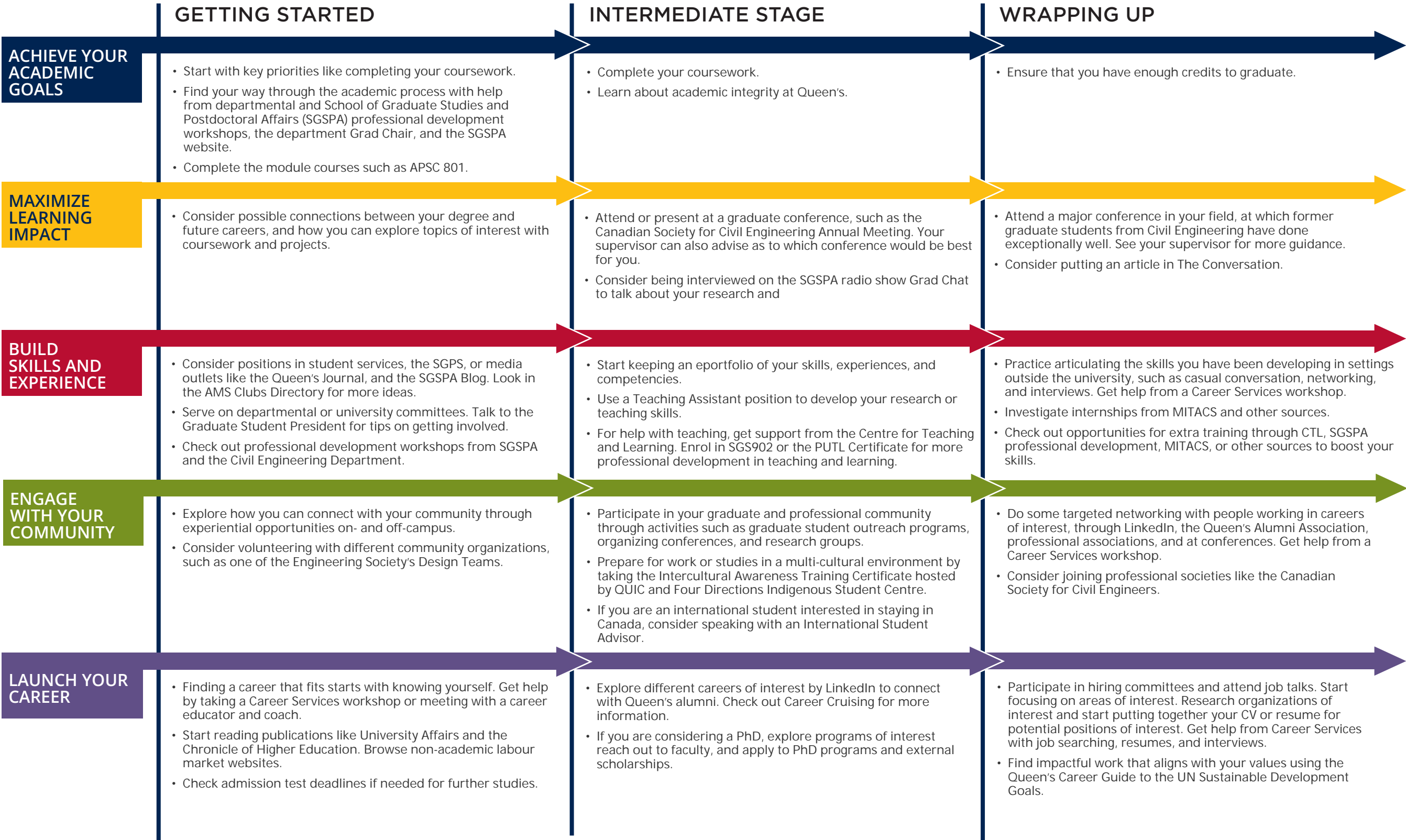


**GRADUATE STUDIES AND
POSTDOCTORAL AFFAIRS**

queensu.ca/grad-postdoc

Civil Engineering MEng Map

MASTER OF ENGINEERING (MEng)



Knowledge & Workplace Skills

A graduate degree in Civil Engineering can equip you with valuable and versatile skills, such as:

- Knowledge and technical skills**
- Effective communication skills** in multiple forms for diverse audiences
- Information management:** prioritize, organize and synthesize large amounts of information
- Time management:** Meet deadlines and manage responsibilities despite competing demands
- Project management:** develop ideas, gather information, analyze, critically appraise findings, draw and act on conclusions
- Creativity and innovation**
- Perseverance**
- Independence** and experience as a **collaborative** worker
- Awareness**, an understanding of sound **ethical** practices, **social responsibility**, responsible research and **cultural sensitivity**
- Professionalism** in all aspects of work, research, and interactions
- Leadership:** initiative and vision leading people and discussion

Career Possibilities

A Master's degree in Civil Engineering can take your career in many directions. Many of our MEng students choose to continue their academic career with an MASc or a PhD. Our Master's students are also equipped with a strong foundation for careers in:

- Academia and Research
- Civil Engineering in the public domain
- Consulting
- Law
- Manufacturing
- Policy and Governance
- Public sector

Taking time to explore career options, build experience, and network can help you have a smooth transition to the world of work after graduation.

How to use this map

Use the 5 rows of the map to explore possibilities and plan for success in the five overlapping areas of career and academics. To make your own custom map, use the My Grad Map tool: careers.queensu.ca/gradmaps.

Graduate Studies FAQs

How do I make the most of my time at Queen's?

Use the Grad Map to plan for success in five overlapping areas of your career and academic life. Everyone's journey is different - the ideas on the maps are just suggestions to help you explore possibilities. For more support with your professional development, take advantage of the SGSPA professional development framework and the new Professional Development Plan (PDP) process to set customized goals to help you get career ready when you graduate.

Where can I get help?

Queen's provides you with a broad range of support services from your first point of contact with the university through to graduation. Ranging from help with academics and careers, to physical, emotional, or spiritual resources – our welcoming environment offers the programs and services you need to be successful, both academically and personally. Check out the [SGSPA website](#) for available resources.

What is the community like?

At Queen's, graduate students from all disciplines learn and discover in a close-knit intellectual community. You will find friends, peers and support among the graduate students enrolled in Queen's more than 130 graduate programs within 50+ departments & research centres. With the world's best scholars, prize-winning professional development opportunities, excellent funding packages and life in the affordable, historic waterfront city of Kingston, Queen's offers a wonderful environment for graduate studies. Queen's is an integral part of the Kingston community, with the campus nestled in the core of the city, only a 10-minute walk to downtown with its shopping, dining and waterfront. For more about Kingston's history and culture, see Queen's University's Discover Kingston page.

Application FAQs

What do I need to know to APPLY?

ACADEMIC REQUIREMENTS

- 4-year Bachelor's degree in Engineering or a cognate science.
- **Grade requirements:** minimum B (70%+) average over the four years of undergraduate study. Grades in specific courses in the final two years are also considered.

ADDITIONAL REQUIREMENTS

- If English is not a native language, prospective students must meet the English language proficiency requirements in writing, speaking, reading, and listening. The following minimum scores are required: (1) TOEFL iBT: Writing (24/30); Speaking (22/30); Reading (22/30); Listening (20/30). Applicants must have the minimum score in each test as well as the minimum overall score, or (2) IELTS: 7.0 (academic module overall band score and a 7.0 for each test band), or (3) PTE Academics: 65, or (4) CAEL CE -70 (minimum overall score).

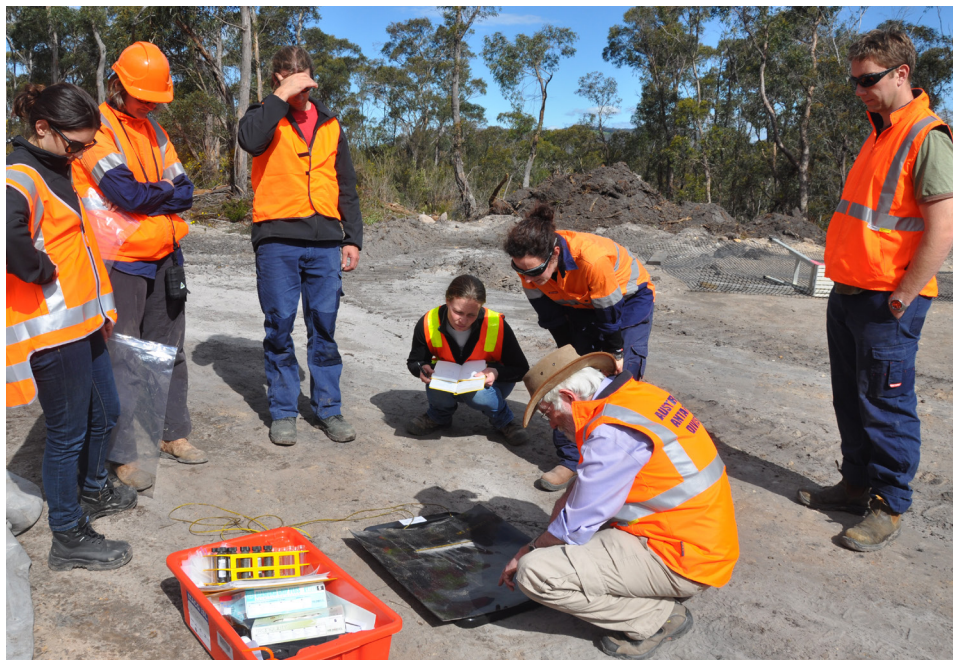
KEY DATES & DEADLINES

- **Application deadline:** March 1st.
- **Notification of acceptance:** 2-3 months after the full application has been received.

Before you start your application, please review the Graduate studies application process.

What about FUNDING?

Civil Engineering MEng graduate students are required to be self-funded.



Debbie Ritchie, Graduate Assistant

(613) 533-6000 ext. 79359

debbie.ritchie@queensu.ca

smithengineering.queensu.ca/civil/graduate/meng

