

Electrical & Computer Engineering

MEng Map

Applying to and Navigating Graduate Studies

GRAD MAP FOR MEng STUDENTS 

Why GRADUATE STUDIES in ELECTRICAL & COMPUTER ENGINEERING?

As an MEng student in the important field of Electrical and Computer Engineering (ECE), you can play a vital role in future developments in such areas as microchip design, bioelectronics, artificial intelligence, machine vision, IoT, autonomous vehicle & robots, speech and language processing, wireless and optical communications, nanoelectronics, photonics, power electronics and systems, green energy, cybersecurity, supercomputing, software engineering, and thousands of other areas. Almost every aspect of modern life is impacted by electrical and computer engineering.

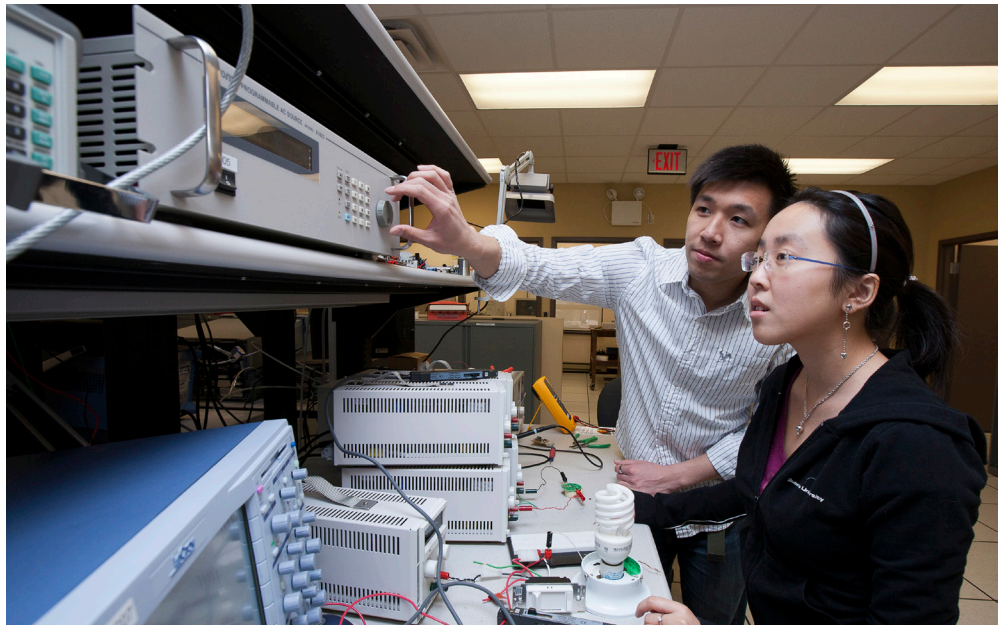
The MEng program is a course work based professional program that suits students who are interested in acquiring advanced engineering knowledge and skills to enhance employment opportunities as a technical specialist in industry. Through an industry internship option, the program offers the student an opportunity to connect knowledge with current industry practice (**Please note, program under review and not offered for 2025-2026**).

Why QUEEN'S?

As an MEng student in ECE at Queen's you are part of one of the most research intensive universities in Canada. Our research program is internationally renowned with a wide range of research activities in all of the major specialization areas of electrical and computer engineering.

Queen's ECE offers a number of cross-disciplinary opportunities in collaboration with the departments of Mathematics & Statistics, Physics & Engineering Physics, Computing, Mechanical Engineering, and the School of Kinesiology and Health Studies.

Our students come from all over the world. At Queen's, graduate students from all disciplines learn and discover in a close-knit intellectual community.



Program STRUCTURE

MEng (2 semesters): Complete 8 term length courses pre-approved by the department, and seminars.

MEng with Industry/Internship option (3 semesters): Complete a semester-long paid internship. (**Please note, program under review and not offered for 2025-2026**).

MEng with Academic Project option (3 semesters): Complete a semester-long project supervised by faculty in Department.



STUDY Areas

- Robotics, Intelligent Systems, and Biomedical Engineering
- Communications and Signal Processing
- Computer and Software Engineering
- Microelectronics, Electromagnetics, and Photonics
- Power Electronics

Visit the [Electrical and Computer Engineering website](#) to read about program options.

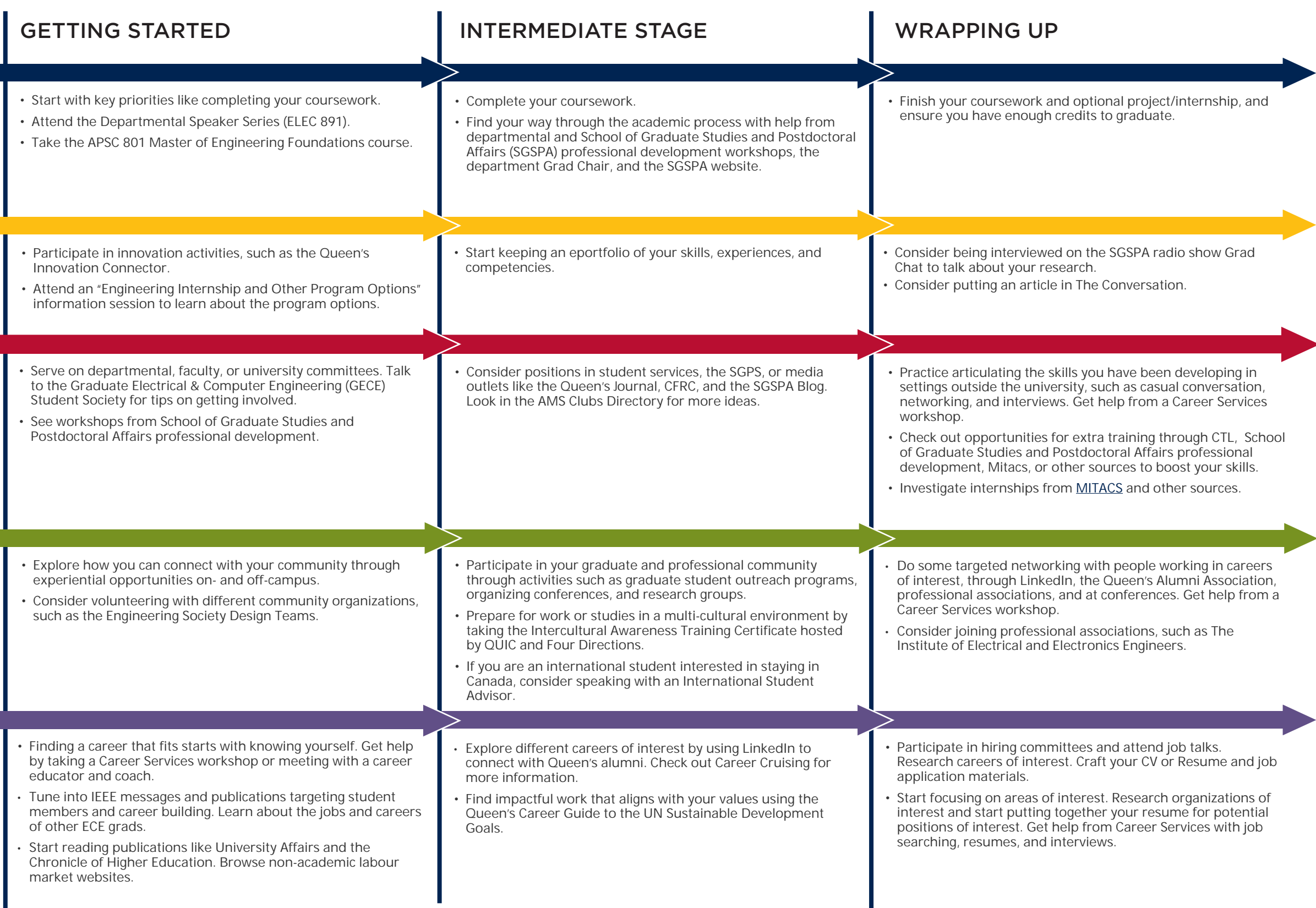


GRADUATE STUDIES AND POSTDOCTORAL AFFAIRS

queensu.ca/grad-postdoc

Electrical & Computer Engineering MEng Map

MASTER OF ENGINEERING (MEng)



Knowledge & Workplace Skills

A graduate degree in Electrical and Computer Engineering can equip you with valuable and versatile skills, such as:

- Knowledge and technical skills**
- Effective communication skills** in multiple forms for diverse audiences
- Information management:** prioritize, organize, and synthesize large amounts of information
- Time management:** meet deadlines and manage responsibilities despite competing demands
- Project management:** develop ideas, gather information, analyze, critically appraise findings, draw and act on conclusions
- Creativity and innovation**
- Perseverance**
- Independence** and experience as a **collaborative** worker
- Awareness**, an understanding of sound **ethical** practices, **social responsibility**, responsible research, and **cultural sensitivity**
- Professionalism** in all aspects of work, research, and interactions
- Leadership:** initiative and vision leading people and discussion

Career Possibilities

A Master's degree in Electrical and Computer Engineering can take your career in many directions. Some of our MEng students choose to continue their academic career with an MASc or PhD. Our Master's students are equipped with a strong foundation for careers in numerous sectors, such as:

- Startups in all sectors, such as wearable devices, intelligent apps
- Services such as financial, pension, actuarial, intellectual properties
- Tech companies, such as Qualcomm, Ciena, Microsoft, Google, IBM, Cisco Systems, General Dynamics, Nvidia, Intel, Amazon, and Samsung.

Taking time to explore career options, build experience, and network can help you have a smooth transition to the world of work after graduation.

How to use this map

Use the 5 rows of the map to explore possibilities and plan for success in the five overlapping areas of career and academics. To make your own custom map, use the My Grad Map tool: careers.queensu.ca/gradmaps.

Graduate Studies FAQs

Application FAQs

What do I need to know to APPLY?

ACADEMIC REQUIREMENTS

- Honours Bachelor degree in Engineering or closely related field.
- **Grade requirements:** Minimum cumulative average of 75% or B from Canadian or US Universities, or 80% for international students.

ADDITIONAL REQUIREMENTS

- Curriculum Vitae.
- English Proficiency Requirements as listed on the ECE graduate website.

KEY DATES & DEADLINES

- **Application due:** January 31 (international), March 1 (domestic).
- **Notification of acceptance:** usually before the end of April for international students, end of May for domestic students.

Before you start your application, please review the Graduate studies application process.

What about FUNDING?

M.Eng. students in a course work program do not receive financial support.

Students who receive permission to enrol in our Industrial Internship Option can receive funding as interns (ELEC 895) from the industry partner. **(Please note, program under review and not offered for 2025-2026).**

How do I make the most of my time at Queen's?

Use the Grad Map to plan for success in five overlapping areas of your career and academic life. Everyone's journey is different - the ideas on the maps are just suggestions to help you explore possibilities. For more support with your professional development, take advantage of the SGSPA professional development framework and the new Professional Development Plan (PDP) process to set customized goals to help you get career ready when you graduate.

Where can I get help?

Queen's provides you with a broad range of support services from your first point of contact with the university through to graduation. Ranging from help with academics and careers, to physical, emotional, or spiritual resources – our welcoming environment offers the programs and services you need to be successful, both academically and personally. Check out the [SGSPA website](#) for available resources.

What is the community like?

At Queen's, graduate students from all disciplines learn and discover in a close-knit intellectual community. You will find friends, peers and support among the graduate students enrolled in Queen's more than 130 graduate programs within 50+ departments & research centres. With the world's best scholars, prize-winning professional development opportunities, and life in the affordable, historic waterfront city of Kingston, Queen's offers a wonderful environment for graduate studies. Queen's is an integral part of the Kingston community, with the campus nestled in the core of the city, only a 10-minute walk to downtown with its shopping, dining and waterfront. For more about Kingston's history and culture, see Queen's University's Discover Kingston page.



Debra Fraser & Cheryl Wright, Graduate Program Assistants

(613) 533-2179

(613) 533-6000 Ext. 79307

fraser.d@queensu.ca

cheryl.wright@queensu.ca

smithengineering.queensu.ca/ece/graduate/phd

