

Geography MA, MSc Map

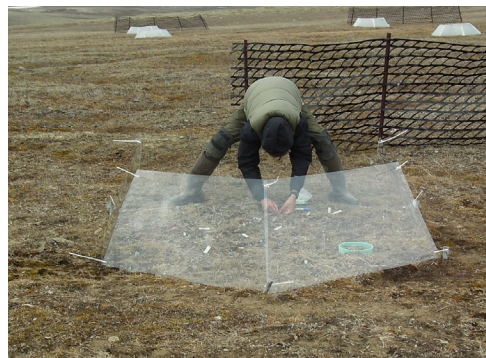
Applying to and Navigating Graduate Studies

Why GRADUATE STUDIES in GEOGRAPHY?

Explore critical questions about our environment and our society as you develop research skills. Study with award-winning faculty in an interdisciplinary department that combines fundamental analysis and research with practical, applied approaches to planning and implementation.

Why QUEEN'S?

The Department of Geography and Planning at Queen's University offers a comprehensive graduate program based on innovative research and strong collaboration between faculty and graduate students. Our specialized Earth System Science labs include GIS and remote-sensing labs equipped with a wide range of the latest software and hardware, and facilities with the latest field equipment and laboratory instrumentation. In human geography, we provide strong support for fieldwork that engages topics of public interest from the community, to the national and international scale. Many of our students work on questions of global significance, including development projects in Latin America or Africa, ecological change in the Arctic, or the relationship between international migration and human rights. We provide a place for graduate students to learn and excel within a vibrant and supportive intellectual community.



GRAD MAP FOR MA, MSc STUDENTS 



"Studying Geography has allowed me to go places I never thought I would be able to go."
– Rebecca Edwards, MSc

Program STRUCTURE

The Geography graduate program can be completed as a MA or MSc, with two methods:

- **Method I:** completion of GPHY 857 (Masters Research Seminar), 4 graduate term-length courses, a full thesis, and an oral defence.
- **Method II:** completion of GPHY 857 (Master's Research Seminar), 6 graduate term-length courses, a half-thesis, and an oral defence.

RESEARCH Areas

- Bodies, Health, and Healthcare
- Citizenship, Identity, Justice, and Governance
- Earth Systems Science, with a strong focus on Arctic systems, forests, and resources

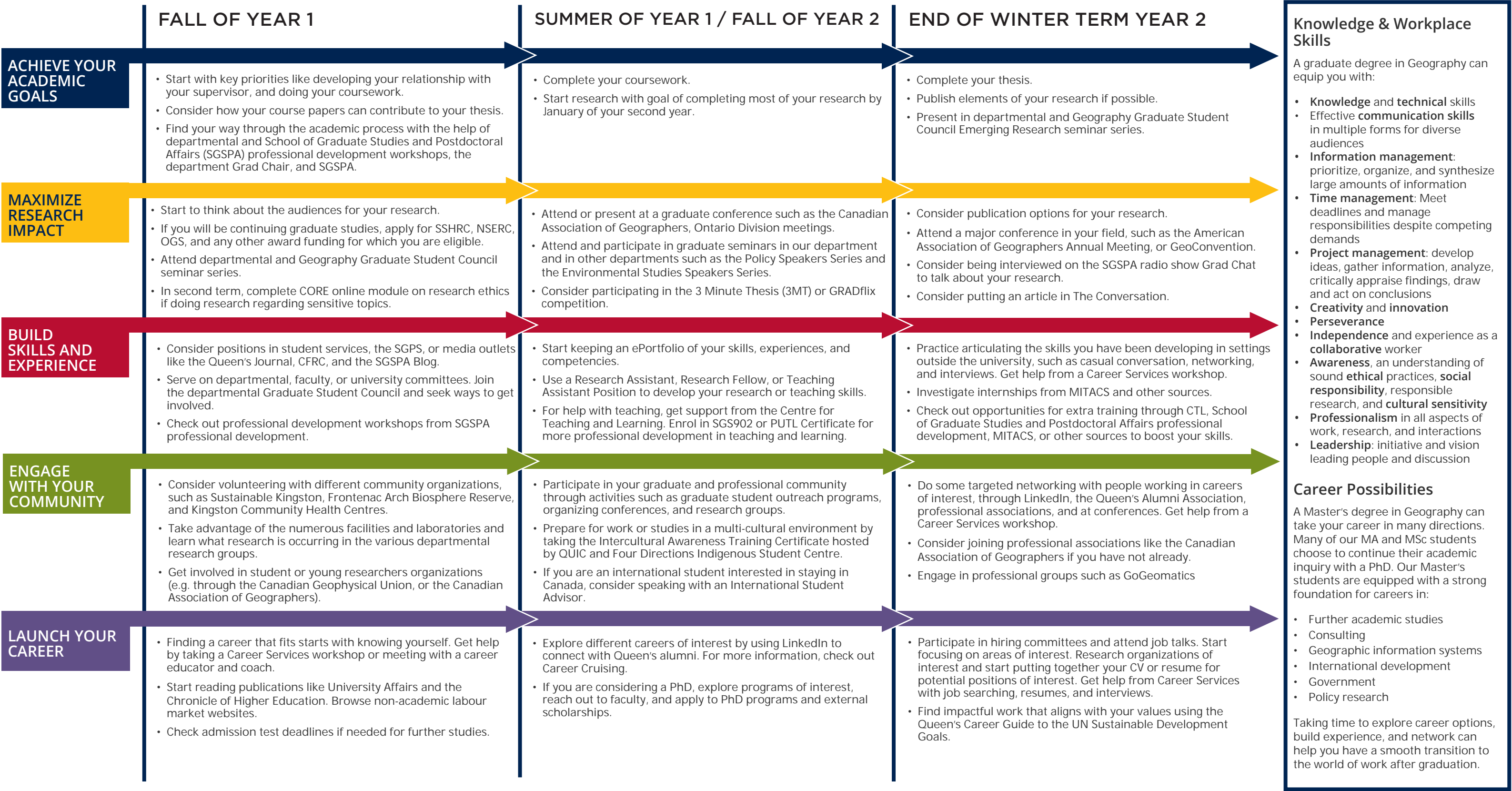
- Geographic Information Science
- Globalization, Development, Economies, and Sustainability
- Post-Colonialism, Indigenous Peoples, and Place
- Urban and Regional Planning
- Work, Identity, and Place (Labour Geographies)

We encourage you to identify an area of research interest and contact a potential supervisor before applying.

Visit the [Department of Geography and Planning website](#) to read faculty profiles and learn more about faculty members' research areas. When you find a faculty member with similar research interests to yours, contact them and tell them about your interest in graduate work, areas of research interest, and related experience. This is also an opportunity for you to find out if the faculty member is accepting new graduate students to supervise. Consider meeting with your potential supervisor at the departmental events for prospective students.

Geography MA & MSc Map

MASTER OF ARTS (MA), MASTER OF SCIENCE (MSc)



How to use this map

Use the 5 rows of the map to explore possibilities and plan for success in the five overlapping areas of career and academics. To make your own custom map, use the My Grad Map tool: careers.queensu.ca/gradmaps.

Graduate Studies FAQs

How do I make the most of my time at Queen's?

Use the Grad Map to plan for success in five overlapping areas of your career and academic life. Everyone's journey is different - the ideas on the maps are just suggestions to help you explore possibilities. For more support with your professional development, take advantage of the SGSPA professional development framework and the new Professional Development Plan (PDP) process to set customized goals to help you get career ready when you graduate.

Where can I get help?

Queen's provides you with a broad range of support services from your first point of contact with the university through to graduation. Ranging from help with academics and careers, to physical, emotional, or spiritual resources – our welcoming environment offers the programs and services you need to be successful, both academically and personally. Check out the [SGSPA website](#) for available resources.

What is the community like?

At Queen's, graduate students from all disciplines learn and discover in a close-knit intellectual community. You will find friends, peers and support among the graduate students enrolled in Queen's more than 130 graduate programs within 50+ departments & research centres. With the world's best scholars, prize-winning professional development opportunities, excellent funding packages and life in the affordable, historic waterfront city of Kingston, Queen's offers a wonderful environment for graduate studies. Queen's is an integral part of the Kingston community, with the campus nestled in the core of the city, only a 10-minute walk to downtown with its shopping, dining and waterfront. For more about Kingston's history and culture, see Queen's University's Discover Kingston page.

Application FAQs

What do I need to know to APPLY?

ACADEMIC REQUIREMENTS

- Honours Bachelor's degree or equivalent.
- **Grade requirements:** minimum B+ average of all courses (equivalent to 77-79.9% or 3.3 GPA out of 4.3 grading scale at Queen's University).

ADDITIONAL REQUIREMENTS

- If English is not your native language, prospective students must meet the **English language proficiency requirements** in writing, speaking, reading, and listening. The following minimum scores are required: (1) TOEFL iBT: Writing (24/30); Speaking (22/30); Reading (22/30); Listening (20/30). Applicants must have the minimum score in each test as well as the minimum overall score, or (2) IELTS: 7.0 (academic module overall band score and a 7.0 for each test band), or (3) PTE Academics: 65, or (5) Canadian Academic English Language (Computer Edition) (CAEL CE): 70 (minimum overall score).

KEY DATES & DEADLINES

- **Application due:** January 31 (Domestic & International students), which must include all supporting documents. However, late applications may be considered on a rolling basis until all spots are filled.
- **Notification of acceptance:** Beginning in March.

Graduate applications are done online. Before you start your application, please review the Graduate studies application process.

What about FUNDING?

Master's students in the 2-year Geography program are currently guaranteed minimum funding of \$17,000 per year for two years. Master's students in the 1-year Geography program are guaranteed minimum funding of \$17,000 for year 1 of their program. Minimum funding levels are, however, generally higher than the guaranteed minimum. This basic funding package may consist of graduate awards and teaching assistantships. Additional funding is highly likely.

Apply for external funding from OGS, SSHRC, and other sources. For more information, see the School of Graduate Studies and Postdoctoral Affairs' information on awards and scholarships.



Kristina Fennell, Graduate Programs Coordinator
(613) 533-6000 ext. 77056
gpplgrad@queensu.ca
queensu.ca/geographyandplanning