

# Global Development Studies MA Map

## Navigating Graduate Studies and Beyond

GRAD MAP FOR MA STUDENTS 

### Why GRADUATE STUDIES in GLOBAL DEVELOPMENT STUDIES?

The MA in Global Development Studies offers a program of transformative learning that provides tools for effective and ethical global research, engagement, and collaboration. We recognize that today's graduates want to translate their academic knowledge into professional pathways that promote equitable and sustainable development and partnerships. To do so they require effective analytical and communication skills combined with a knowledge base that is global in scope. To meet this need, we offer focused classes and close supervision that in combination empowers students to address the world's complex social, political, and environmental challenges. From this foundation, our students build interdisciplinary research projects on the topics that they are most passionate about! By actively fostering the skills sought by employers in Canada and internationally, the degree enables students to open doors to careers in the fields of government and policymaking, journalism and media, social enterprise, law, and the education sector, including further research at the doctoral level.

*"The MA program was so accommodating after my return from medical leave and everyone was so welcoming. The supervisory support was phenomenal and made the process of writing my thesis so much more enjoyable. Overall, the program was a rewarding and academically rigorous experience."*

*- Tineke Kipper, MA*

### Why QUEEN'S?

As recognized academic leaders in their fields with major international research projects, our faculty uniquely bring their active research into the classroom.



They provide an enriching space for our graduate cohorts to explore issues of political economy, cultural politics, and sustainability on a global scale. Our engaging classroom experience is combined with close supervision that provides students with the analytical tools and thematic knowledge required to conduct original research projects. At a Masters level, we offer both a one-year degree and a two-year advanced programme involving field research. For students keen to further advance and apply their skills, we subsequently offer opportunities for advanced standing within our four year PhD programme in Global Development Studies.

This positive emphasis on cross-cultural learning and social justice helps to produce informed citizens who are uniquely positioned to craft positive social change in Canada and abroad. More broadly, at Queen's graduate students from all disciplines learn and discover in a close-knit intellectual community. With the world's best scholars, prize-winning professional development opportunities, excellent funding packages, and life in the historic waterfront city of Kingston, Queen's offers a uniquely stimulating environment for graduate studies.

### Program STRUCTURE

The Masters of Global Development Studies has two streams:

The one-year course-based stream ensures the development of conceptual thinking and analytical and interpretive skills, but does not require primary research. Students will complete a Major Research Paper (MRP) of 50-60 pages, based on secondary research, dealing with a specific interdisciplinary question related to the field of development studies.

The two-year thesis-based stream culminates in a full Master's thesis of between 75-100 pages defended before a committee of three examiners. The thesis

will demonstrate the student's ability to produce original work using primary data often (but not necessarily) gathered through fieldwork.

Students do not choose between these streams before they start the program. Instead, all students are admitted into the course-based stream. Subsequently, those students interested in entering the research-based stream can apply for entry once they have begun their studies during the Fall term.

Entry into the research-based stream is dependent on having an overall average of at least A-, a clear research project, and close supervisory support from a faculty member.

### RESEARCH Areas

- Environment, Development and Sustainability
- Global Health and Wellbeing
- The Cultural Politics of Development
- The Political Economy of Development

Before applying, we encourage you to identify your key area(s) of research interest to make sure you are a good fit with the areas that we teach and supervise in. Domestic applicants do not need to secure a specific supervisor; however, international students must secure a supervisor prior to application due to the limited number of spaces available to international students. Please contact potential supervisors at the application stage to discuss your area of research interest, related experience, and to determine if they are accepting graduate students to supervise. Faculty profiles with their research and/or supervision interests are available on our departmental website. Once admitted, we will help you develop your research project and if applicable, find a suitable supervisor.

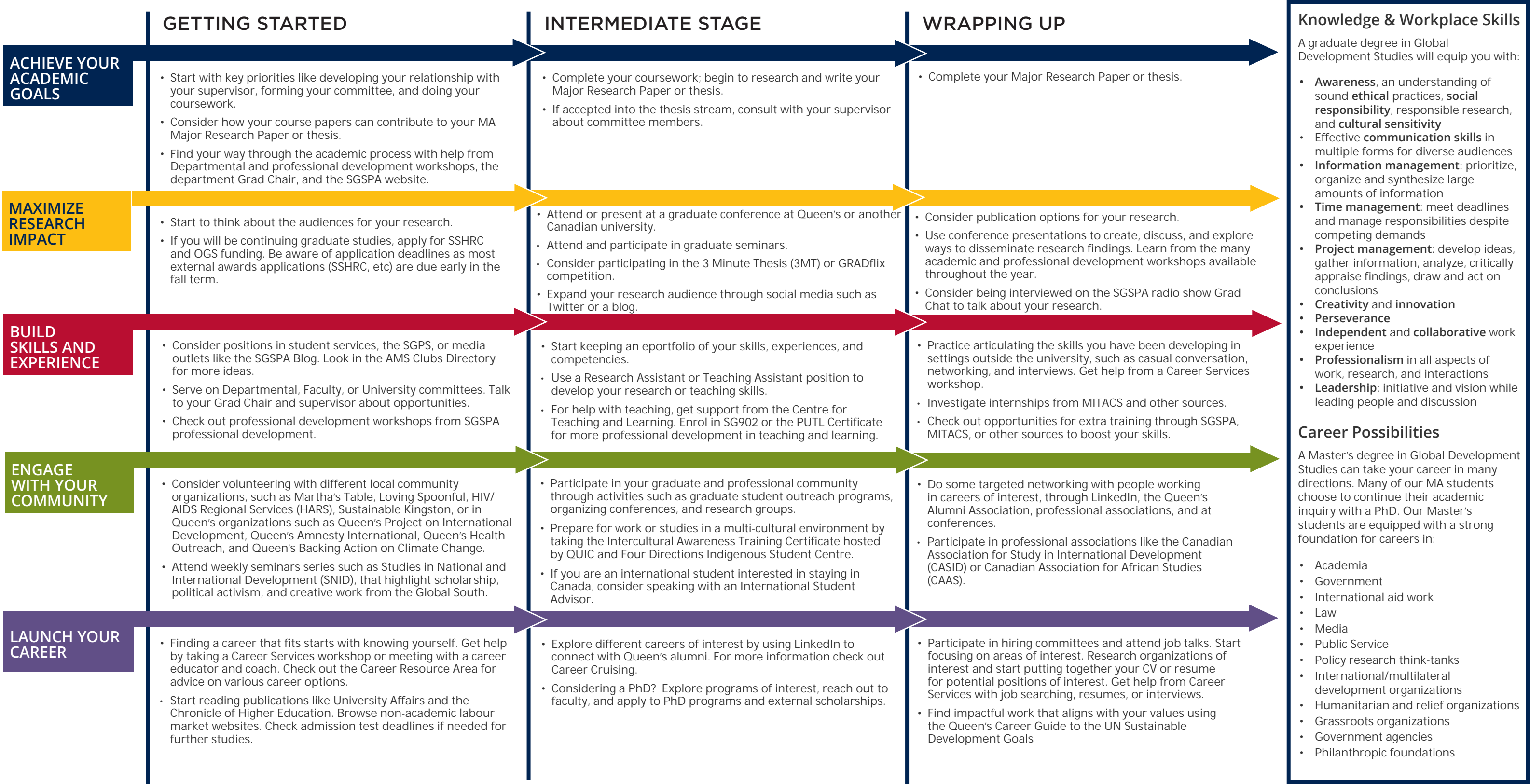


GRADUATE STUDIES AND POSTDOCTORAL AFFAIRS

[queensu.ca/grad-postdoc](https://queensu.ca/grad-postdoc)

# Global Development Studies MA Map

MASTER OF ARTS (MA)



**How to use this map**  
Use the 5 rows of the map to explore possibilities and plan for success in the five overlapping areas of career and academics. To make your own custom map, use the My Grad Map tool: [careers.queensu.ca/gradmaps](https://careers.queensu.ca/gradmaps).



# Graduate Studies FAQs

## How do I make the most of my time at Queen's?

Use the Grad Map to plan for success in five overlapping areas of your career and academic life. Everyone's journey is different - the ideas on the maps are just suggestions to help you explore possibilities. For more support with your professional development, take advantage of the SGSPA professional development framework and the new Professional Development Plan (PDP) process to set customized goals to help you get career ready when you graduate.

## Where can I get help?

Queen's provides you with a broad range of support services from your first point of contact with the University through to graduation. Ranging from help with academics and careers, to physical, emotional, or spiritual resources – our welcoming environment offers the programs and services you need to be successful, both academically and personally. Check out the [SGSPA website](#) for available resources.

## What is the community like?

At Queen's, graduate students from all disciplines learn and discover in a close-knit intellectual community. You will find friends, peers, and support among the graduate students enrolled in Queen's more than 130 graduate programs within 50+ departments and research centres. With the world's best scholars, prize-winning professional development opportunities, excellent funding packages, and life in the affordable, historic waterfront city of Kingston, Queen's offers a wonderful environment for graduate studies. Queen's is an integral part of the Kingston community, with the campus nestled in the core of the city, only a 10-minute walk to downtown with its shopping, dining, and waterfront. For more about Kingston's history and culture, see Queen's University's Discover Kingston page.

# Application FAQs

## What do I need to know to APPLY?

### ACADEMIC REQUIREMENTS

- A minimum B+ average in the last two years of an Honours (4-year) bachelors program in a related social science field. Students with humanities-based backgrounds or from traditionally unrelated fields may also be considered for admission if they have completed sufficient courses in social science.

### ADDITIONAL REQUIREMENTS

- Academic writing sample (10-15 pages).
- International students must secure a supervisor prior to applying. For a list of potential supervisors, please review the DEVS faculty profiles on the DEVS website.
- If English is not a native language, prospective students must meet the English Language Proficiency Requirements in writing, speaking, reading, and listening. The following minimum scores are required: (1) TOEFL iBT: Writing (24/30); Speaking (22/30); Reading (22/30); Listening (20/30). Applicants must have the minimum score in each test as well as the minimum overall score, or (2) IELTS: 7.0 (academic module overall band score and a 7.0 for each test band), or (3) PTE Academics: 65, or (4) CAEL CE - 70 (minimum overall score).
- Two academic reference letters.

### KEY DATES & DEADLINES

- **Application due:** January 31st.
- **Notification of acceptance:** Mid-February and onwards.
- Late applications may be considered for domestic applicants until June 1. However, January 31 is the deadline to be considered for additional awards and scholarships that could supplement the minimum financial award. Please email the DEVS Academic Programs Assistant for further information if you will be submitting an application after January 31.

Before you start your application, please review the Graduate studies application process.

## What about FUNDING?

The Department of Global Development Studies provides financial support for MA students enrolled in the one-year course-based program. The current minimum level of funding is \$16,000 for the academic year. Financial support is derived from a combination of internal and external awards and teaching assistantships. Equivalent funding for the second year of the thesis-based stream is not guaranteed. See the School of Graduate Studies and Postdoctoral Affairs' information on awards and scholarships and the department's Financial Support page.

