

# Mining Engineering MEng Map

## Applying to and Navigating Graduate Studies

### Why GRADUATE STUDIES in MINING ENGINEERING?

Mining is the foundation of industrial civilization. It is the process of extracting minerals like gold, silver, copper, nickel and uranium (metallic) and salt, potash, coal, limestone aggregate and oil (non-metallic) formations that concentrate naturally in the earth. It may surprise you, but other than agricultural products, the raw ingredients for everything else in our modern lives comes from mining.

Mining Engineering is one part technical design and one part business management. Mining engineers are responsible for deciding how valuable a mineral deposit is and how best to mine it, for planning the day-to-day schedule and path of mining to maximize extraction and profit, and for ensuring the safety of people and equipment through applications in areas such as mine ventilation and rock mechanics.



GRAD MAP FOR MEng STUDENTS →

### Why QUEEN'S?

As a Master's student in Mining Engineering at Queen's you are part of one of the most research intensive universities in Canada. Our academic program is internationally renowned with a wide range of teaching in all of the major specialization areas of mining engineering.

As technology evolves and the global economy changes, our students and researchers play a key role in advancing the state of the art in mining. In close collaboration with industry partners, our faculty and students work to make mining operations safer, more efficient, more productive, less impactful on the natural environment, and more cost effective.

### STUDY Areas

- Chemical Extraction of Metals
- Management of Social Risk & Community Relations
- Drilling and Blasting
- Geotechnical, Environmental, Sustainability, & Mineral Economics
- Geostatistics & Geometallurgy
- Mineral Planning & Design of Mechanical Systems
- Mineral Processing
- Mine Design and Planning
- Sustainability Standards
- Occupational Health and Safety
- Reliability, Maintenance, & Risk Assessment

### Program STRUCTURE

MEng (1 year): Complete course work.

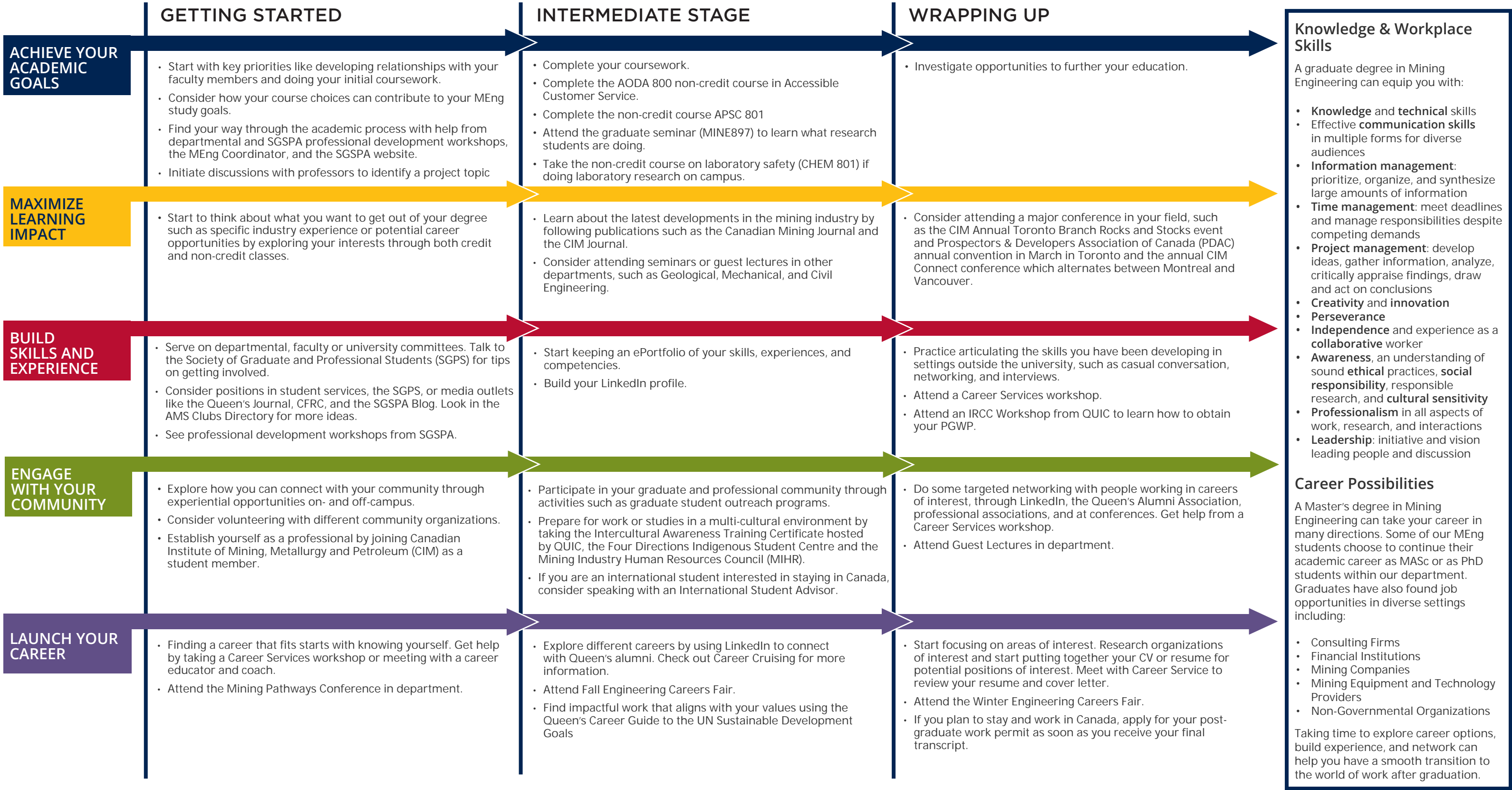


**GRADUATE STUDIES AND  
POSTDOCTORAL AFFAIRS**

[queensu.ca/grad-postdoc](https://queensu.ca/grad-postdoc)

# Mining Engineering MEng Map

MASTER OF ENGINEERING (MEng)



How to use this map

Use the 5 rows of the map to explore possibilities and plan for success in the five overlapping areas of career and academics. To make your own custom map, use the My Grad Map tool: [careers.queensu.ca/gradmaps](https://careers.queensu.ca/gradmaps).



# Graduate Studies FAQs

## How do I make the most of my time at Queen's?

Use the Grad Map to plan for success in five overlapping areas of your career and academic life. Everyone's journey is different - the ideas on the maps are just suggestions to help you explore possibilities. For more support with your professional development, take advantage of the SGSPA professional development framework and the new Professional Development Plan (PDP) process to set customized goals to help you get career ready when you graduate.

## Where can I get help?

Queen's provides you with a broad range of support services from your first point of contact with the university through to graduation. Ranging from help with academics and careers, to physical, emotional, or spiritual resources – our welcoming environment offers the programs and services you need to be successful, both academically and personally. Check out the [SGSPA website](#) for available resources.

## What is the community like?

At Queen's, graduate students from all disciplines learn and discover in a close-knit intellectual community. You will find friends, peers and support among the graduate students enrolled in Queen's more than 130 graduate programs within 50+ departments & research centres. With the world's best scholars, prize-winning professional development opportunities, excellent funding packages and life in the affordable, historic waterfront city of Kingston, Queen's offers a wonderful environment for graduate studies. Queen's is an integral part of the Kingston community, with the campus nestled in the core of the city, only a 10-minute walk to downtown with its shopping, dining and waterfront. For more about Kingston's history and culture, see Queen's University's Discover Kingston page.

# Application FAQs

## What do I need to know to APPLY?

### ACADEMIC REQUIREMENTS

- A Bachelor's degree in Mining, Mechanical Engineering, Chemical Engineering, or other related engineering fields. Many of our students come from industrial backgrounds. Anyone without academic prerequisites will be placed on probation and required to take additional courses before initiating a MEng program of study.
- **Grade requirements:** B- (70%) average.

### ADDITIONAL REQUIREMENTS

- If English is not a native language, prospective students must meet the English language proficiency requirements in writing, speaking, reading, and listening. The following minimum scores are required: (1) TOEFL iBT: Writing (24/30); Speaking (22/30); Reading (22/30); Listening (20/30). Applicants must have the minimum score in each test as well as the minimum overall score, or (2) IELTS: 7.0 (academic module overall band score and a 7.0 for each test band), or (3) PTE Academics: 65, or (4) CAEL CE - 70 (minimum overall score).

### KEY DATES & DEADLINES

- **Application deadline:** January 31st.
- **Notification of acceptance:** March 31st.

Before you start your application, please review the Graduate studies application process.

## What about FUNDING?

Mining Engineering MEng students are self-funded.

