

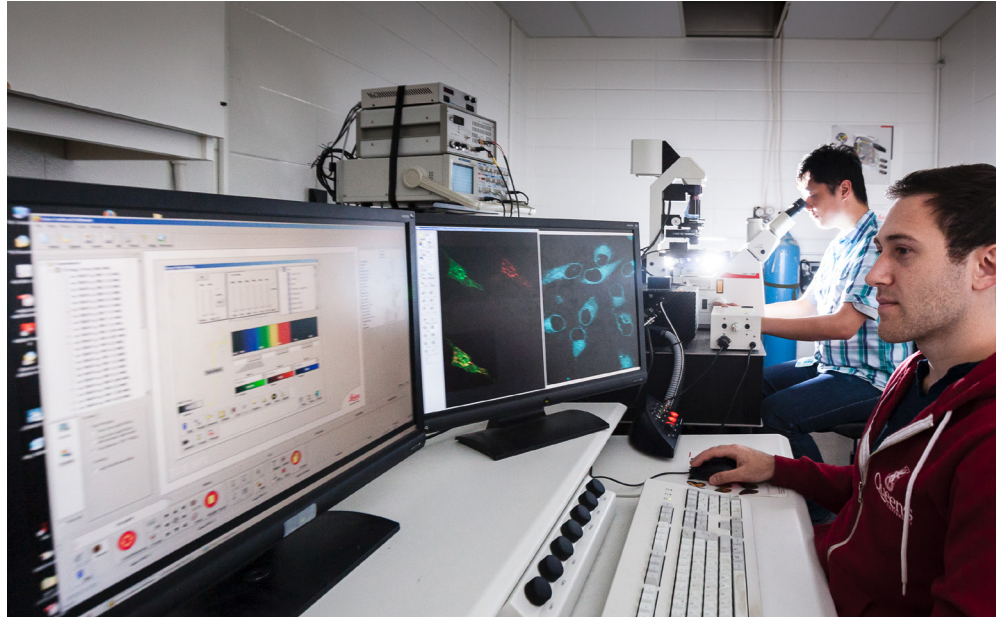
Pathology & Molecular Medicine MSc Map

Applying to and Navigating Graduate Studies

GRAD MAP FOR MSc STUDENTS 

Why GRADUATE STUDIES in PATHOLOGY & MOLECULAR MEDICINE?

Graduate students and their work are an important part of an ongoing research process that provides the community with ways of understanding natural, cultural, imaginative, social, and technological phenomena. Graduate students in Pathology and Molecular Medicine have opportunities to pursue comprehensive training in basic and translational biomedical research. They pursue advanced degrees under the supervision of an exceptional group of basic, clinical, and translational researchers.



Queen's is a great setting to learn first-hand how the fast pace of molecular genetic research is changing clinical practice, leading to exciting new diagnostic and treatment approaches for cancer and other diseases.

Why QUEEN'S?

With a focus on cancer – 12 of our 20 investigators are cancer biologists – and our department members deliver comprehensive diagnostic laboratory and clinical services to Southeastern Ontario through the Kingston General Hospital, offering great training for the next generation of biomedical research scientists and laboratory physicians.



Program STRUCTURE

MSc (2 years): Course work, research demonstrating experimental competence, and a thesis.

Research AREAS

- Cancer Research and Developmental Biology
- Hemostasis, Thrombosis Research, and Vascular Biology
- Human Genetics and Cytogenetics

Visit the [Pathology and Molecular Medicine website](#) to read faculty profiles and learn more about faculty members' research areas. When you find a faculty member with similar research interests to yours, contact them and tell them about your interest in graduate work, area of research interest, and related experience.

Please include a current CV, contact information for 2-3 references who would be familiar with your academic performance, any research experience, and an unofficial transcript.

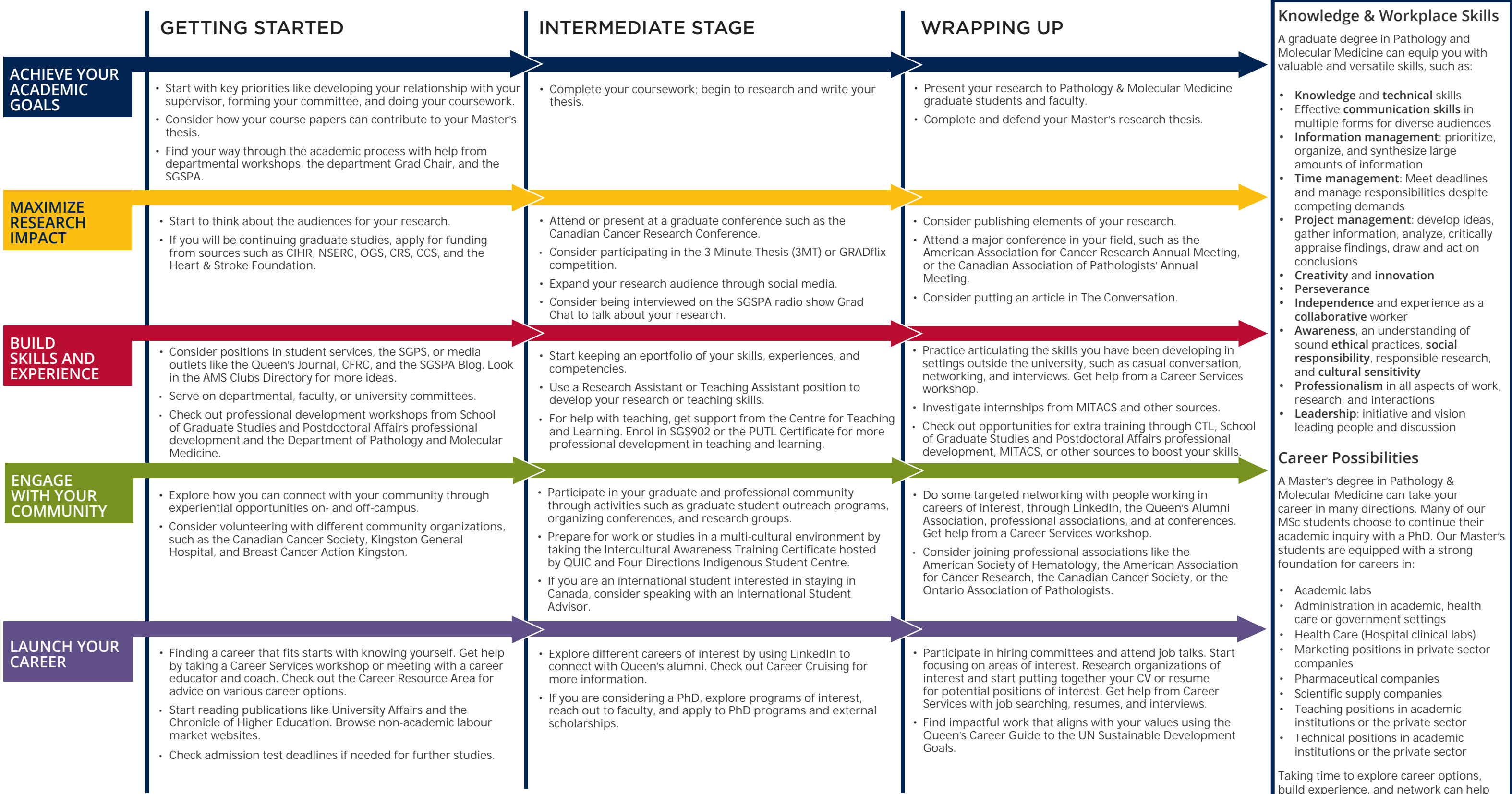


GRADUATE STUDIES AND
POSTDOCTORAL AFFAIRS

queensu.ca/grad-postdoc

Pathology & Molecular Medicine MSc Map

MASTER OF SCIENCE (MSc)



Knowledge & Workplace Skills

A graduate degree in Pathology and Molecular Medicine can equip you with valuable and versatile skills, such as:

- **Knowledge** and **technical skills**
- Effective **communication skills** in multiple forms for diverse audiences
- **Information management:** prioritize, organize, and synthesize large amounts of information
- **Time management:** Meet deadlines and manage responsibilities despite competing demands
- **Project management:** develop ideas, gather information, analyze, critically appraise findings, draw and act on conclusions
- **Creativity** and **innovation**
- **Perseverance**
- **Independence** and experience as a **collaborative** worker
- **Awareness**, an understanding of sound **ethical** practices, **social responsibility**, responsible research, and **cultural sensitivity**
- **Professionalism** in all aspects of work, research, and interactions
- **Leadership:** initiative and vision leading people and discussion

Career Possibilities

A Master's degree in Pathology & Molecular Medicine can take your career in many directions. Many of our MSc students choose to continue their academic inquiry with a PhD. Our Master's students are equipped with a strong foundation for careers in:

- Academic labs
- Administration in academic, health care or government settings
- Health Care (Hospital clinical labs)
- Marketing positions in private sector companies
- Pharmaceutical companies
- Scientific supply companies
- Teaching positions in academic institutions or the private sector
- Technical positions in academic institutions or the private sector

Taking time to explore career options, build experience, and network can help you have a smooth transition to the world of work after graduation.

How to use this map

Use the 5 rows of the map to explore possibilities and plan for success in the five overlapping areas of career and academics. To make your own custom map, use the My Grad Map tool: careers.queensu.ca/gradmaps.

Graduate Studies FAQs

How do I make the most of my time at Queen's?

Use the Grad Map to plan for success in five overlapping areas of your career and academic life. Everyone's journey is different - the ideas on the maps are just suggestions to help you explore possibilities. For more support with your professional development, take advantage of the SGSPA professional development framework and the new Professional Development Plan (PDP) process to set customized goals to help you get career ready when you graduate.

Where can I get help?

Queen's provides you with a broad range of support services from your first point of contact with the university through to graduation. Ranging from help with academics and careers, to physical, emotional, or spiritual resources – our welcoming environment offers the programs and services you need to be successful, both academically and personally. Check out the [SGSPA website](#) for available resources.

What is the community like?

At Queen's, graduate students from all disciplines learn and discover in a close-knit intellectual community. You will find friends, peers and support among the graduate students enrolled in Queen's more than 130 graduate programs within 50+ departments & research centres. With the world's best scholars, prize-winning professional development opportunities, excellent funding packages and life in the affordable, historic waterfront city of Kingston, Queen's offers a wonderful environment for graduate studies. Queen's is an integral part of the Kingston community, with the campus nestled in the core of the city, only a 10-minute walk to downtown with its shopping, dining and waterfront. For more about Kingston's history and culture, see Queen's University's Discover Kingston page.

Application FAQs

What do I need to know to APPLY?

ACADEMIC REQUIREMENTS

- Honours BSc or equivalent in life sciences, biochemistry, biology, or equivalent program with at least a B+ average. (Students with only a general degree can be admitted for a qualifying year.)
- We consider all of your grades, but pay particular attention to the last two years of science-related courses.

ADDITIONAL REQUIREMENTS

- If English is not a native language, prospective students must meet the English language proficiency requirements in writing, speaking, reading, and listening. The following minimum scores are required: (1) TOEFL iBT: Writing (24/30); Speaking (22/30); Reading (22/30); Listening (20/30). Applicants must have the minimum score in each test as well as the minimum overall score, or (2) IELTS: 7.0 (academic module overall band score and a 7.0 for each test band), or (3) PTE Academics: 65, or (4) CAEL CE - 70 (minimum overall score).

KEY DATES & DEADLINES

- **Application due:** February 1st to be considered for internal funding.
- **Notification of acceptance:** Quickly pending confirmation of a supervisor.

Before you start your application, please review the Graduate studies application process.

What about FUNDING?

We currently offer our Master's students minimum funding of \$26,500 annually. For internal, provincial, and national competitive award winners, the funding package increases by 2.5%, 5%, and 10% respectively. Additional income can be earned through teaching assistantships.

Apply for external funding from OGS, CIHR/NSERC, and other sources. See the School of Graduate Studies and Postdoctoral Affairs' information on awards and scholarships for more.



Queen's
UNIVERSITY

DEPARTMENT OF
PATHOLOGY &
MOLECULAR MEDICINE

Pathology Departmental & Academic Administrator

email: ddpm-grad@queensu.ca

website: pathology.queensu.ca