

# Pathology & Molecular Medicine PhD Map

## Applying to and Navigating Graduate Studies

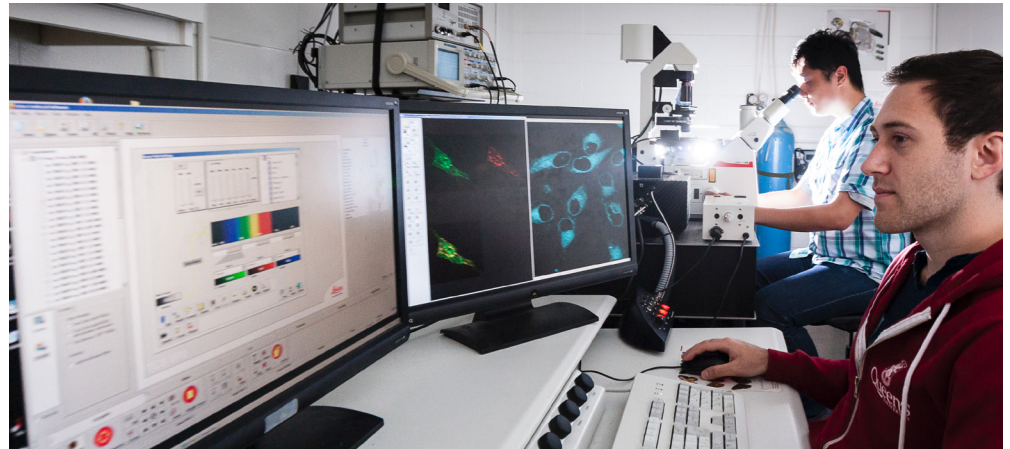
GRAD MAP FOR PhD STUDENTS 

### Why GRADUATE STUDIES in PATHOLOGY & MOLECULAR MEDICINE?

Graduate students and their work are an important part of an ongoing research process that provides the community with ways of understanding natural, cultural, imaginative, social, and technological phenomena. The faculty, staff, and trainees in Pathology & Molecular Medicine are engaged in world-class research and teaching, attracting and mentoring the best students, the finest educators, dedicated support staff, and internationally-competitive researchers. We value curiosity, creativity, commitment, and collegiality.

The department is a distinguished academic centre engaging a wide range of research endeavours including anatomical sciences, bacteriology, biochemistry, cancer biology, cardiovascular sciences, cell biology, developmental biology, immunology, molecular biology, neuroscience, pharmacology, physiology, reproductive biology, toxicology, and virology. The breadth and depth of our research has a strong foundation in multi-disciplinary discovery. The faculty and trainees collaborate with numerous research institutions locally, nationally, and internationally.

*Queen's is a great setting to learn first-hand how the fast pace of molecular genetic research is changing clinical practice, leading to exciting new diagnostic and treatment approaches for cancer and other diseases.*



### Why QUEEN'S?

With a focus on cancer – 12 of our 20 investigators are cancer biologists – our department members deliver comprehensive diagnostic laboratory and clinical services to Southeastern Ontario through the Kingston General Hospital, offering great training for the next generation of biomedical research scientists and laboratory physicians.



### Program STRUCTURE

PhD (4 years): Course work, research making novel contributions to the field of study, and a thesis.

### Research AREAS

- Cancer Research and Developmental Biology
- Hemostasis, Thrombosis Research, and Vascular Biology
- Human Genetics and Cytogenetics

Visit the [Pathology and Molecular Medicine website](#) to read faculty profiles and learn more about faculty members' research areas. When you find a faculty member with similar research interests to yours, contact them and tell them about your interest in graduate work, area of research interest, and related experience.

Please include a current CV, contact information for 2-3 references who would be familiar with your academic performance, any research experience, and an unofficial transcript. The email correspondence is also an opportunity for you to find out if the faculty member is accepting new graduate students to supervise. Consider meeting with your potential supervisor at departmental events for prospective students.

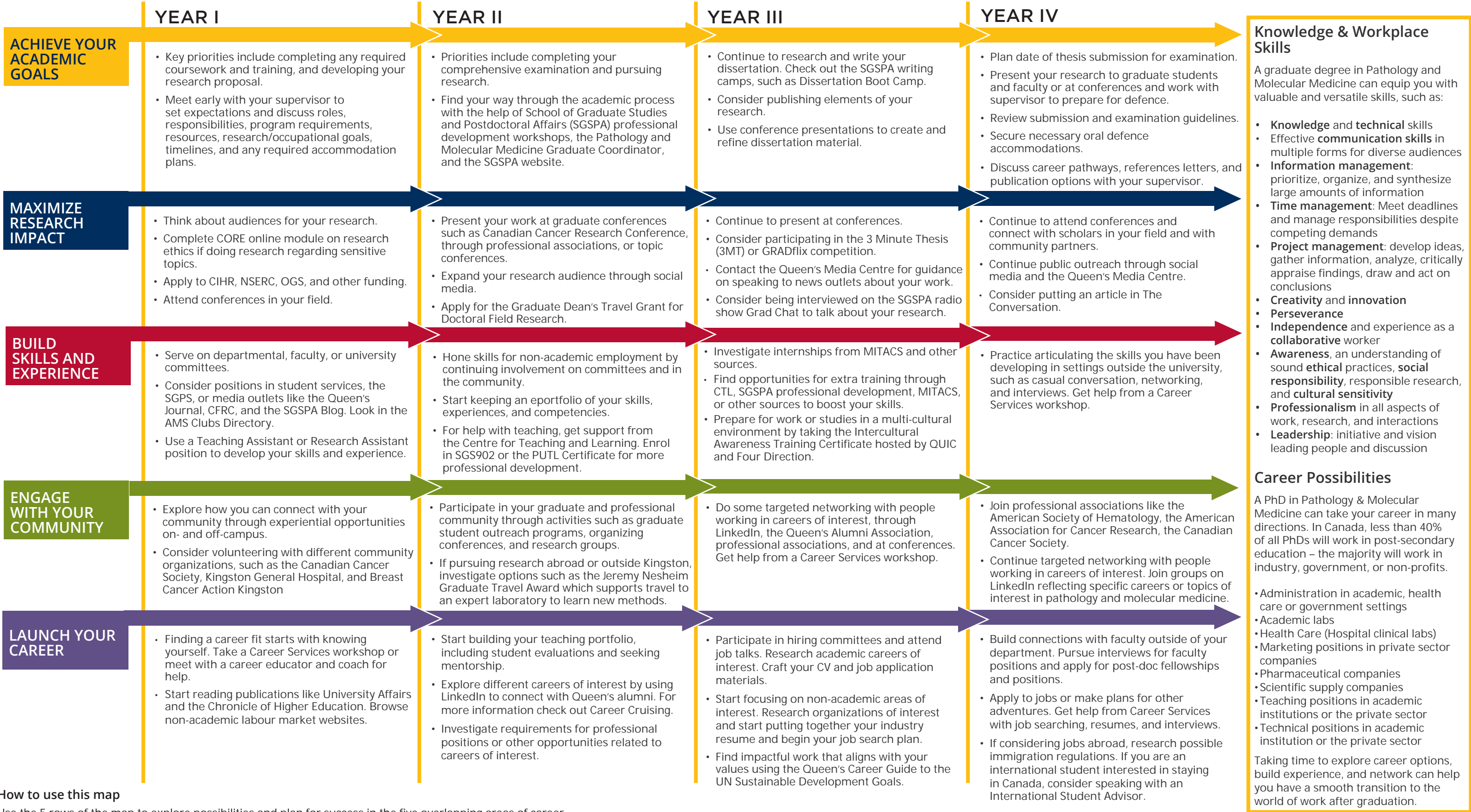


**GRADUATE STUDIES AND POSTDOCTORAL AFFAIRS**

[queensu.ca/grad-postdoc](https://queensu.ca/grad-postdoc)

# Pathology & Molecular Medicine PhD Map

DOCTOR OF PHILOSOPHY (PhD)



**How to use this map**  
Use the 5 rows of the map to explore possibilities and plan for success in the five overlapping areas of career and academics. To make your own custom map, use the My Grad Map tool: [careers.queensu.ca/gradmaps](https://careers.queensu.ca/gradmaps).



# Graduate Studies FAQs

## How do I make the most of my time at Queen's?

Use the Grad Map to plan for success in five overlapping areas of your career and academic life. Everyone's journey is different - the ideas on the maps are just suggestions to help you explore possibilities. For more support with your professional development, take advantage of the SGSPA professional development framework and the new Professional Development Plan (PDP) process to set customized goals to help you get career ready when you graduate.

## Where can I get help?

Queen's provides you with a broad range of support services from your first point of contact with the university through to graduation. Ranging from help with academics and careers, to physical, emotional, or spiritual resources – our welcoming environment offers the programs and services you need to be successful, both academically and personally. Check out the [SGSPA website](#) for available resources.

## What is the community like?

At Queen's, graduate students from all disciplines learn and discover in a close-knit intellectual community. You will find friends, peers and support among the graduate students enrolled in Queen's more than 130 graduate programs within 50+ departments & research centres. With the world's best scholars, prize-winning professional development opportunities, excellent funding packages and life in the affordable, historic waterfront city of Kingston, Queen's offers a wonderful environment for graduate studies. Queen's is an integral part of the Kingston community, with the campus nestled in the core of the city, only a 10-minute walk to downtown with its shopping, dining and waterfront. For more about Kingston's history and culture, see Queen's University's Discover Kingston page.

# Application FAQs

## What do I need to know to APPLY?

### ACADEMIC REQUIREMENTS

- Honours BSc or equivalent in life sciences, biochemistry, biology, or equivalent program with first class standing, or MSc, or equivalent research experience.
- We consider all of your grades, but pay particular attention to the last two years of science-related courses.

### ADDITIONAL REQUIREMENTS

- If English is not a native language, prospective students must meet the English language proficiency requirements in writing, speaking, reading, and listening. The following minimum scores are required: (1) TOEFL iBT: Writing (24/30); Speaking (22/30); Reading (22/30); Listening (20/30). Applicants must have the minimum score in each test as well as the minimum overall score, or (2) IELTS: 7.0 (academic module overall band score and a 7.0 for each test band), or (3) PTE Academics: 65, or (4) CAEL CE -70 (minimum overall score).

### KEY DATES & DEADLINES

- **Application due:** February 1st to be considered for internal funding.
- **Notification of acceptance:** Quickly pending confirmation of a supervisor.

Before you start your application, please review the Graduate studies application process.

## What about FUNDING?

Currently, doctoral students are guaranteed minimum funding of \$27,500 per year for years 1-4. For internal, provincial, and national competitive award winners, the funding package increases by 2.5%, 5% and 10% respectively. Additional income can be earned through teaching assistantships.

Apply for external funding from CIHR, NSERC, OGS, the Heart & Stroke Foundation, CBCF, the Department of Defence, the American Cancer Society, and other sources. For more information, see the School of Graduate Studies and Postdoctoral Affairs' information on awards and scholarships.



**Queen's**  
UNIVERSITY

DEPARTMENT OF  
**PATHOLOGY &  
MOLECULAR MEDICINE**

Pathology Departmental & Academic Administrator  
email: [ddpm-grad@queensu.ca](mailto:ddpm-grad@queensu.ca)  
website: [pathology.queensu.ca](http://pathology.queensu.ca)