

Physical Therapy MSc(PT) Map

Applying to and Navigating Graduate Studies

Why GRADUATE STUDIES in PHYSICAL THERAPY?

The Physical Therapy Program at Queen's University prepares students to undertake the professional roles of physiotherapists in Canada. With critical inquiry and evidence-based practice as the foundation, the program promotes the acquisition of advanced academic knowledge, skills and behaviours that are essential for a primary health care provider in a complex and continually evolving healthcare environment. The Physical Therapy Program is a 24-month, sequential, program of the School of Graduate Studies and Postdoctoral Affairs at Queen's University, leading to a Master of Science in Physical Therapy (MScPT) degree. The program is accredited by Physiotherapy Education Accreditation Canada and graduates are eligible to challenge the Physiotherapy Competency Examination (PCE), which qualifies them for physiotherapy practice in Canada. Graduates are also eligible to register with the Colleges of Physiotherapy in all Canadian provinces and territories, and with the Canadian Physiotherapy Association.



Why QUEEN'S?

The School of Rehabilitation Therapy was established by Queen's University in 1967 to meet the needs of the local population. We continue to make active



GRAD MAP FOR MSc(PT) STUDENTS



contributions to and engage with the members of our local community. Through interprofessional and international research collaborations, community development projects and many other initiatives, our work has expanded and enabled us to contribute to the daily lives of individuals and communities regionally, nationally and internationally.

experiences in multiple practice settings to meet the standard for entry-to-practice in physiotherapy in Canada. A minimum of 1025 hours of clinical placements will be created during the 24-month program. Students will be responsible for all costs associated with clinical placements.

A full description of the program objectives, curriculum design and academic course descriptions can be found on the [School of Rehabilitation Therapy \(SRT\) website](#).

Program STRUCTURE

The curriculum of the MScPT program includes both academic blocks, on Queen's campus, and clinical experience blocks. Clinical experiences provide students with opportunities to develop their professional roles across multiple practice contexts and settings, and to consolidate their knowledge, clinical skills, and critical reasoning for practice. In this way, the program supports students' progression to meeting the entry-to-practice milestones of the Competency Profile for Physiotherapists in Canada.

The majority of clinical placement experiences will be arranged in facilities within the Queen's University catchment area. Our catchment boundaries normally include Whitby to the west, Cornwall to the east, and Orillia/Midland to the north. Placement are assigned based on student preferences and a priority system to ensure that students are given

"I currently work at a clinic that has a few hopeful Queen's PT applicants for this year. Talking to them made me reflect on just how amazing my time at Queen's really was."

– Jesse Awenus, MSc PT

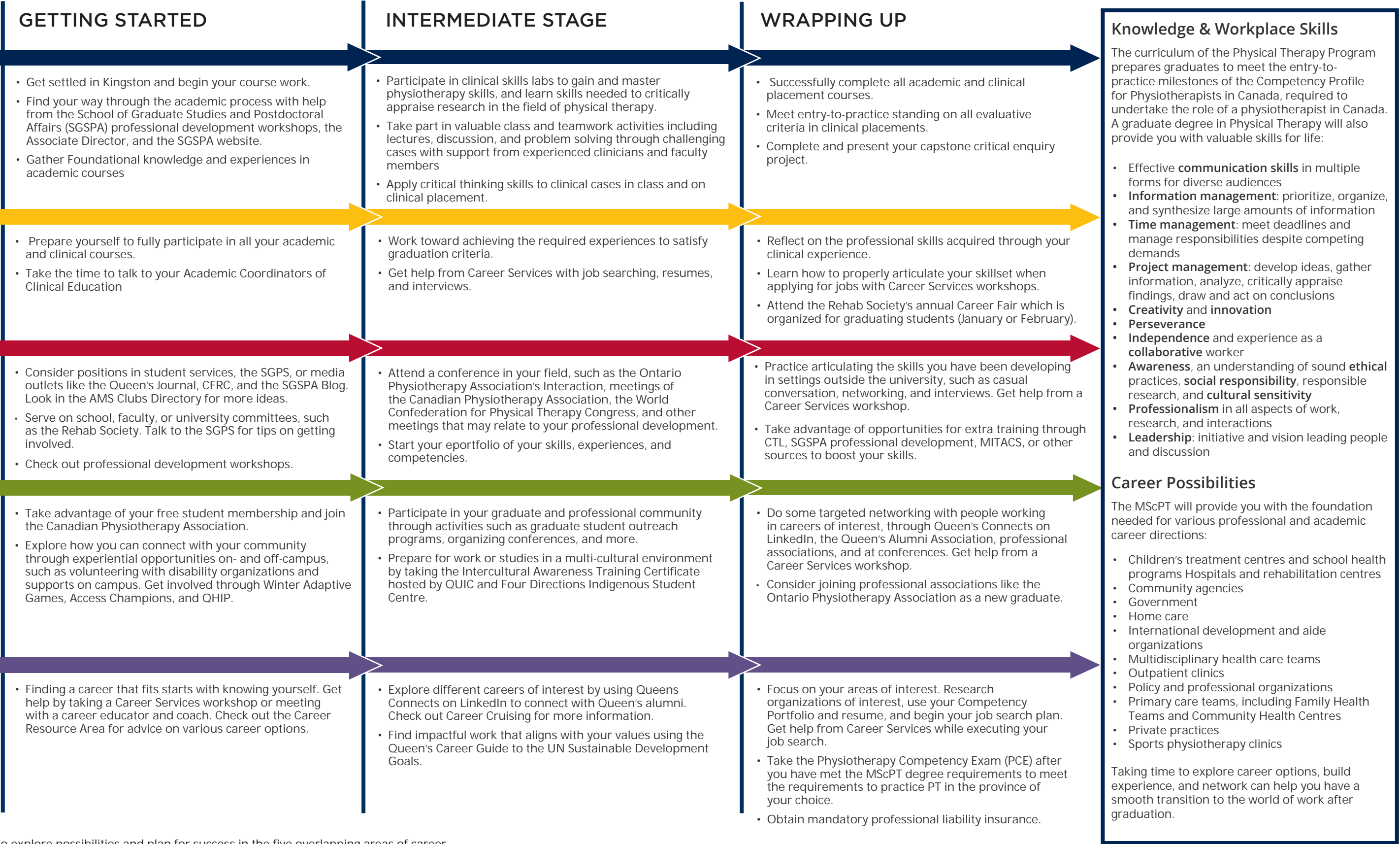


**GRADUATE STUDIES AND
POSTDOCTORAL AFFAIRS**

queensu.ca/grad-postdoc

Physical Therapy MSc(PT) Map

MASTER OF SCIENCE (PHYSICAL THERAPY) MSc(PT)



How to use this map

Use the 5 rows of the map to explore possibilities and plan for success in the five overlapping areas of career and academics. To make your own custom map, use the My Grad Map tool: careers.queensu.ca/gradmaps.

Graduate Studies FAQs

How do I make the most of my time at Queen's?

Use the Grad Map to plan for success in five overlapping areas of your career and academic life. Everyone's journey is different - the ideas on the maps are just suggestions to help you explore possibilities. For more support with your professional development, take advantage of the SGSPA professional development framework and the new Professional Development Plan (PDP) process to set customized goals to help you get career ready when you graduate.

Where can I get help?

Queen's provides you with a broad range of support services from your first point of contact with the university through to graduation. Ranging from help with academics and careers, to physical, emotional, or spiritual resources – our welcoming environment offers the programs and services you need to be successful, both academically and personally. Check out the [SGSPA website](#) for available resources.

What is the community like?

At Queen's, graduate students from all disciplines learn and discover in a close-knit intellectual community. You will find friends, peers and support among the graduate students enrolled in Queen's more than 130 graduate programs within 50+ departments & research centres. With the world's best scholars, prize-winning professional development opportunities, excellent funding packages and life in the affordable, historic waterfront city of Kingston, Queen's offers a wonderful environment for graduate studies. Queen's is an integral part of the Kingston community, with the campus nestled in the core of the city, only a 10-minute walk to downtown with its shopping, dining and waterfront. For more about Kingston's history and culture, see Queen's University's Discover Kingston page.

Application FAQs

What do I need to know to APPLY?

ACADEMIC REQUIREMENTS

- **Grade requirements:** The admissions process to the Queen's MScPT program is highly competitive. To be eligible for admission, students must first have a four-year baccalaureate degree or equivalent with a minimum second-class standing (B-) from a recognized university. Subsequent to this initial requirement, further academic requirements include cum-GPA and sub-GPA cut-off values. The actual cut-off mark is based on the applicant pool. In 2022 the sub-GPA cut off was 3.75. Applicants must earn a minimum grade of B- OR 70% in all prerequisite courses.
- **Course prerequisites:** Courses in introductory psychology, statistics, human anatomy, and human physiology.

ADDITIONAL REQUIREMENTS

- Queen's Physical Therapy Personal Submission Form questions
- Two confidential reference forms, one academic and one professional (available within the ORPAS application)
- Documented evidence (through volunteer work, community service, or personal experience) of strong interest in the profession of physical therapy, knowledge of the profession, and desire to work with people of all ages
- Canadian Citizenship or Canadian permanent resident status
- Completion of prerequisite courses.

LANGUAGE PROFICIENCY

Applicants who have resided in Canada or another English speaking country for less than three years as of the first day of the month of the term in which students are to begin must achieve a satisfactory score on one of the following tests:

- Test of English as a Foreign Language (TOEFL) - minimum score required: 250 for computer-based test; 94 for iBT.
- Michigan English Language Assessment Battery (MELAB) - minimum score required: 80.
- International English Language Testing System (IELTS) - minimum score required: 8.
- The curriculum of the PT Program is delivered in English and the clinical sites affiliated with the Program are principally English speaking. Students with English as a second language are required to demonstrate sufficient competency. French speaking Canadians are not required to complete language proficiency tests.

For a complete list of admission requirements, view the MScPT Admission Requirements.

KEY DATES & DEADLINES

- **Application opens:** Mid-October
- **Application deadline:** Early January through ORPAS
- **Notification of acceptance:** Mid-May

What about FEES?

You are not eligible to apply for a bursary before becoming a registered student at Queen's University. You may be eligible for bursary assistance through student awards, including the Queen's General Bursary. In addition, every second year, the Program offers the Terrence H. O'Rourke Scholarship to an incoming student who self-identifies as the child of immigrant parents.

