

# Psychology MSc Map

## Applying to and Navigating Graduate Studies

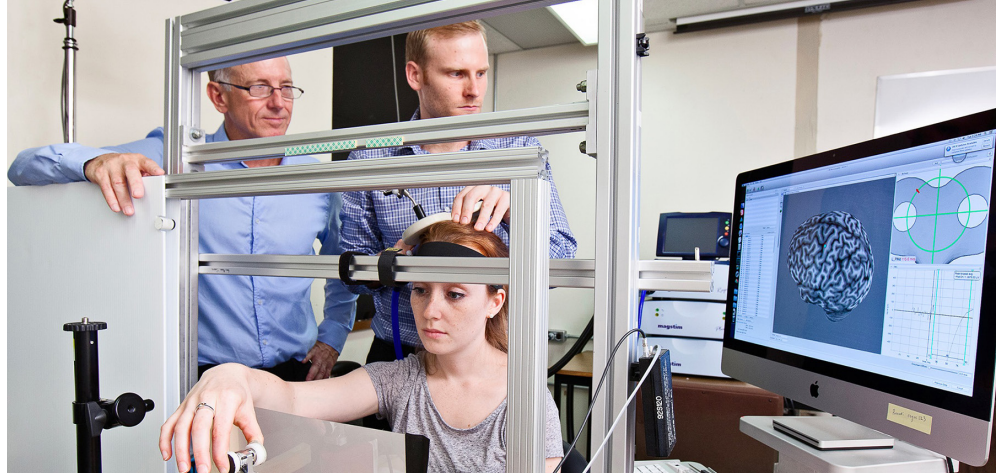
### Why GRADUATE STUDIES in PSYCHOLOGY?

Graduate studies in Psychology provide training in establishing a scientific understanding of human behaviour and its causes across the lifespan. This training focuses on developing expertise in the discipline's theoretical and empirical literature, conducting research aimed at making new scientific discoveries, and disseminating knowledge about psychology to students and the broader community. The skills and expertise that graduate students develop during the course of their graduate degrees are in demand in the public and private sector, including a wide range of industries, management, government, universities and schools, corrections, hospitals, and private practice. Those with graduate degrees in Psychology will be well situated to take advantage of these and many more opportunities to apply this crucial expertise.

*"The Master's program in Psychology at Queen's is about what you make out of it! It provided a diverse variety of learning opportunities for me; from coding and multivariate statistics to research, teaching, and even course development!"*  
– Shahryar Naeini, Psychology MSc graduate



GRAD MAP FOR MSc STUDENTS 



### Why QUEEN'S?

The graduate program in Psychology at Queen's is internationally renowned for its excellent faculty and students, its innovative training and the value of its research, scholarship and skill development. We offer programs in core areas of Psychology, with a strong emphasis on high-quality critical scholarship, fundamental research and discovery, and application in clinical, community, and private sectors. Students work with an interdisciplinary group of world-class researchers who provide training with state-of-the-art techniques to make discoveries and communicate those discoveries to the relevant stakeholders. Our goal is to prepare students for successful careers in a variety of settings, including clinical and health care settings, industry and the private sector, academic institutions, private consulting firms, and many others.

### Program STRUCTURE

MSc (2 years): course work, and thesis.

### RESEARCH Areas

- Clinical Psychology
- Cognitive Neuroscience
- Developmental Psychology
- Social/Personality Psychology

We encourage you to identify an area of research interest and contact a potential supervisor before applying.

Visit the [Psychology Department website](#) to read faculty profiles, learn more about faculty members' research laboratories and interests, and discover whether they are open to supervising students in the year you are applying. If you find a faculty member with similar research interests to yours, reach out to tell them about your interest in graduate work, area of research interest, and related experience.

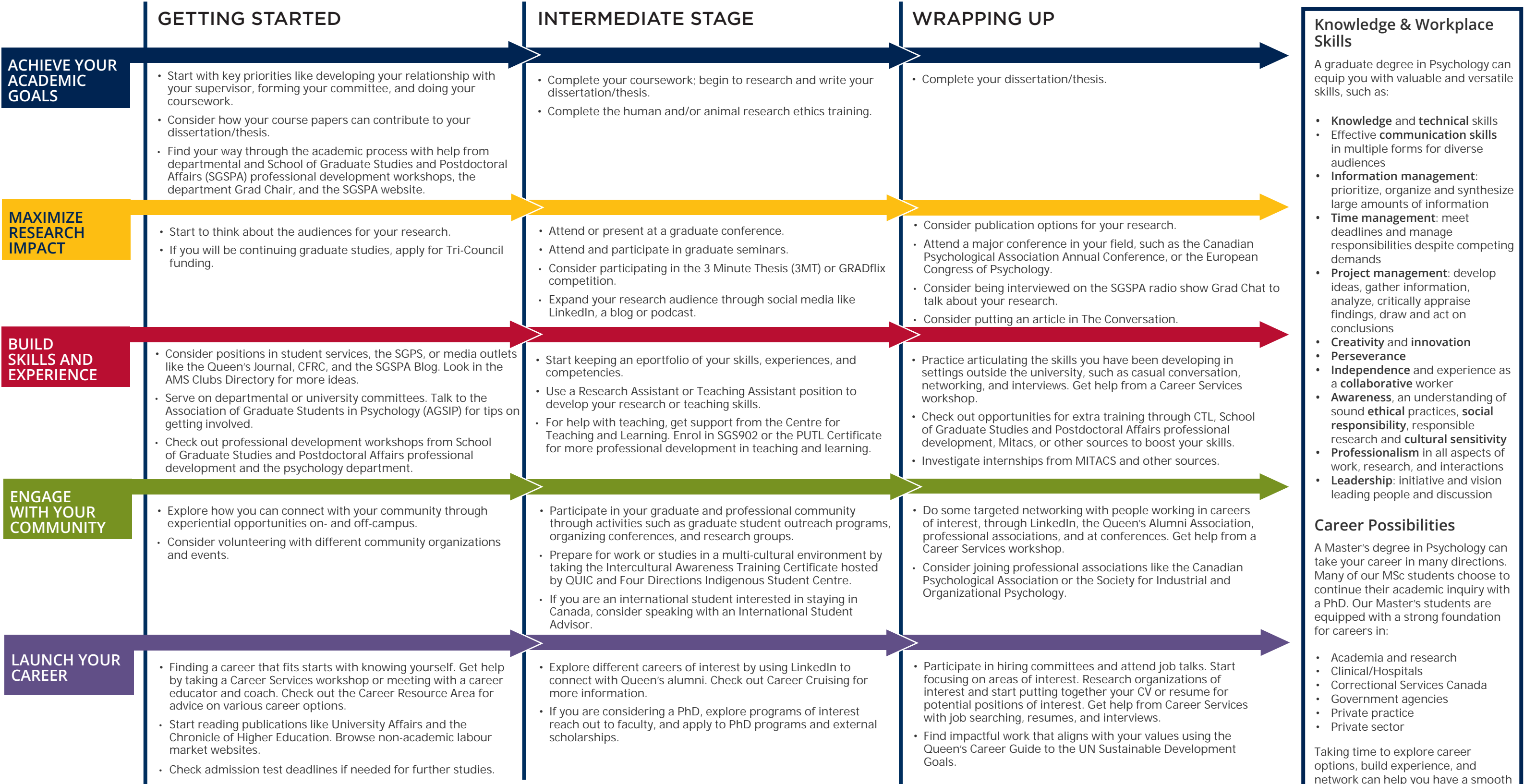


GRADUATE STUDIES AND  
POSTDOCTORAL AFFAIRS

[queensu.ca/grad-postdoc](https://queensu.ca/grad-postdoc)

# Psychology MSc Map

MASTER OF SCIENCE (MSc)



### Knowledge & Workplace Skills

A graduate degree in Psychology can equip you with valuable and versatile skills, such as:

- Knowledge and technical skills**
- Effective communication skills** in multiple forms for diverse audiences
- Information management:** prioritize, organize and synthesize large amounts of information
- Time management:** meet deadlines and manage responsibilities despite competing demands
- Project management:** develop ideas, gather information, analyze, critically appraise findings, draw and act on conclusions
- Creativity and innovation**
- Perseverance**
- Independence** and experience as a **collaborative** worker
- Awareness**, an understanding of sound **ethical** practices, **social responsibility**, responsible research and **cultural sensitivity**
- Professionalism** in all aspects of work, research, and interactions
- Leadership:** initiative and vision leading people and discussion

### Career Possibilities

A Master's degree in Psychology can take your career in many directions. Many of our MSc students choose to continue their academic inquiry with a PhD. Our Master's students are equipped with a strong foundation for careers in:

- Academia and research
- Clinical/Hospitals
- Correctional Services Canada
- Government agencies
- Private practice
- Private sector

Taking time to explore career options, build experience, and network can help you have a smooth transition to the world of work after graduation.

### How to use this map

Use the 5 rows of the map to explore possibilities and plan for success in the five overlapping areas of career and academics. To make your own custom map, use the My Grad Map tool: [careers.queensu.ca/gradmaps](https://careers.queensu.ca/gradmaps).



# Graduate Studies FAQs

## How do I make the most of my time at Queen's?

Use the Grad Map to plan for success in five overlapping areas of your career and academic life. Everyone's journey is different - the ideas on the maps are just suggestions to help you explore possibilities. For more support with your professional development, take advantage of the SGSPA professional development framework and the new Professional Development Plan (PDP) process to set customized goals to help you get career ready when you graduate.

## Where can I get help?

Queen's provides you with a broad range of support services from your first point of contact with the university through to graduation. Ranging from help with academics and careers, to physical, emotional, or spiritual resources – our welcoming environment offers the programs and services you need to be successful, both academically and personally. Check out the [SGSPA website](#) for available resources.

## What is the community like?

At Queen's, graduate students from all disciplines learn and discover in a close-knit intellectual community. You will find friends, peers and support among the graduate students enrolled in Queen's more than 130 graduate programs within 50+ departments & research centres. With the world's best scholars, prize-winning professional development opportunities, excellent funding packages and life in the affordable, historic waterfront city of Kingston, Queen's offers a wonderful environment for graduate studies. Queen's is an integral part of the Kingston community, with the campus nestled in the core of the city, only a 10-minute walk to downtown with its shopping, dining and waterfront. For more about Kingston's history and culture, see Queen's University's Discover Kingston page.

# Application FAQs

## What do I need to know to APPLY?

### ACADEMIC REQUIREMENTS

- Bachelor's Honours degree in Psychology (or equivalent area).
- **Grade requirements:** Minimum B+ average or international equivalent (e.g., upper second class).

### ADDITIONAL REQUIREMENTS

- Statement of Interest
- Resume
- Two academic references
- If English is not a native language, prospective students must meet the English language proficiency requirements in writing, speaking, reading, and listening. The following minimum scores are required: (1) TOEFL iBT: Writing (24/30); Speaking (22/30); Reading (22/30); Listening (20/30). Applicants must have the minimum score in each test as well as the minimum overall score, or (2) IELTS: 7.0 (academic module overall band score and a 7.0 for each test band), or (3) PTE Academics: 65, or (4) CAEL CE - 70 (minimum overall score).

### KEY DATES & DEADLINES

- **Application due:** December 1.

Before you start your application, please review the Psychology application process and the Graduate studies application process.

## What about FUNDING?

M.Sc. students in Psychology currently receive minimum funding of \$23,000 per year for the two years of the program.

Apply for external funding from the Tri-Councils and from other sources (e.g. Ontario Graduate Scholarship). For more information, see the School of Graduate Studies and Postdoctoral Affairs' information on awards and scholarships, or see Funding and Financial Support on the Psychology Department website.

