

Rehabilitation Science MSc Map

Applying to and Navigating Graduate Studies

Why GRADUATE STUDIES in REHABILITATION SCIENCE?

Graduate programs in Rehabilitation Science at Queen's University stress the multidisciplinary contribution of many health professions and disciplines to rehabilitation. The focus is on understanding how people who experience disability can be enabled to live full and satisfying lives as members of their community, considering a broad range of individual, community and societal factors. Students engage with the broad scope of rehabilitation science and are provided with opportunities to develop research skills and knowledge. Their research addresses the needs of people across the spectrum of ability, promotes improved high-quality rehabilitation, enhanced and health services and a more equitable society. The program attracts students from varied backgrounds including occupational therapy, physical therapy, speech-language pathology, kinesiology, psychology, social work, arts & humanities, nursing, education, epidemiology, law, engineering, and others.

Why QUEEN'S?

The School of Rehabilitation Therapy at Queen's University is committed to leading and inspiring positive changes that transform lives through rehabilitation research, education and practice. As part of this commitment, part of our core mission is to educate rehabilitation scientists who contribute to health and well-being globally through collaboration, creativity, and the discovery of new knowledge. We are recognized nationally and internationally for our excellent faculty, high-quality professional and research programs, and the ways in which our scholarship contributes to the lives of people affected by or at risk of disability.

Program STRUCTURE

MSc (2 years): MSc in Rehabilitation Science students are required to take 2 core courses (6 credits), 2 elective courses (6 credits), and a written thesis with an oral defense over 24 months (2 years).

GRAD MAP FOR MSc STUDENTS →



"Rehabilitation Science at Queen's is a remarkably special program. There are always so many different skills, mindsets and experiences in one room, which has done so much to teach me how many different ways any issue in rehabilitation can be approached and solved. The diversity in experience provides so many tremendous opportunities for personal, professional and academic growth. I will be forever grateful for the skills and knowledge that I have gained from the faculty, staff and especially from my fellow students. The rehabilitation science program is a welcoming community where everyone can feel at home and feel valued based on the unique journey that brought them here."

- Melissa Richardson, MSc

RESEARCH Areas

- Inclusion and social participation of people with disabilities
- Technology for enhanced function and wellness
- Supports for physical mobility and optimal aging in older adults
- Health and resilience among military families, Veterans, and public safety personnel
- Evaluation of health services and rehabilitation systems
- Self-management and support programs for chronic conditions
- Support for informal caregivers
- Health Professional Education



them and tell them about your interest in graduate work and related experience. This is also an opportunity for you to find out if the faculty member is accepting new graduate students to supervise.

Identify a research interest and contact a potential supervisor before applying

Visit the [Rehabilitation Science website](#) to read faculty profiles and learn more about faculty members' research areas. When you find a faculty member with similar research interests to yours, contact

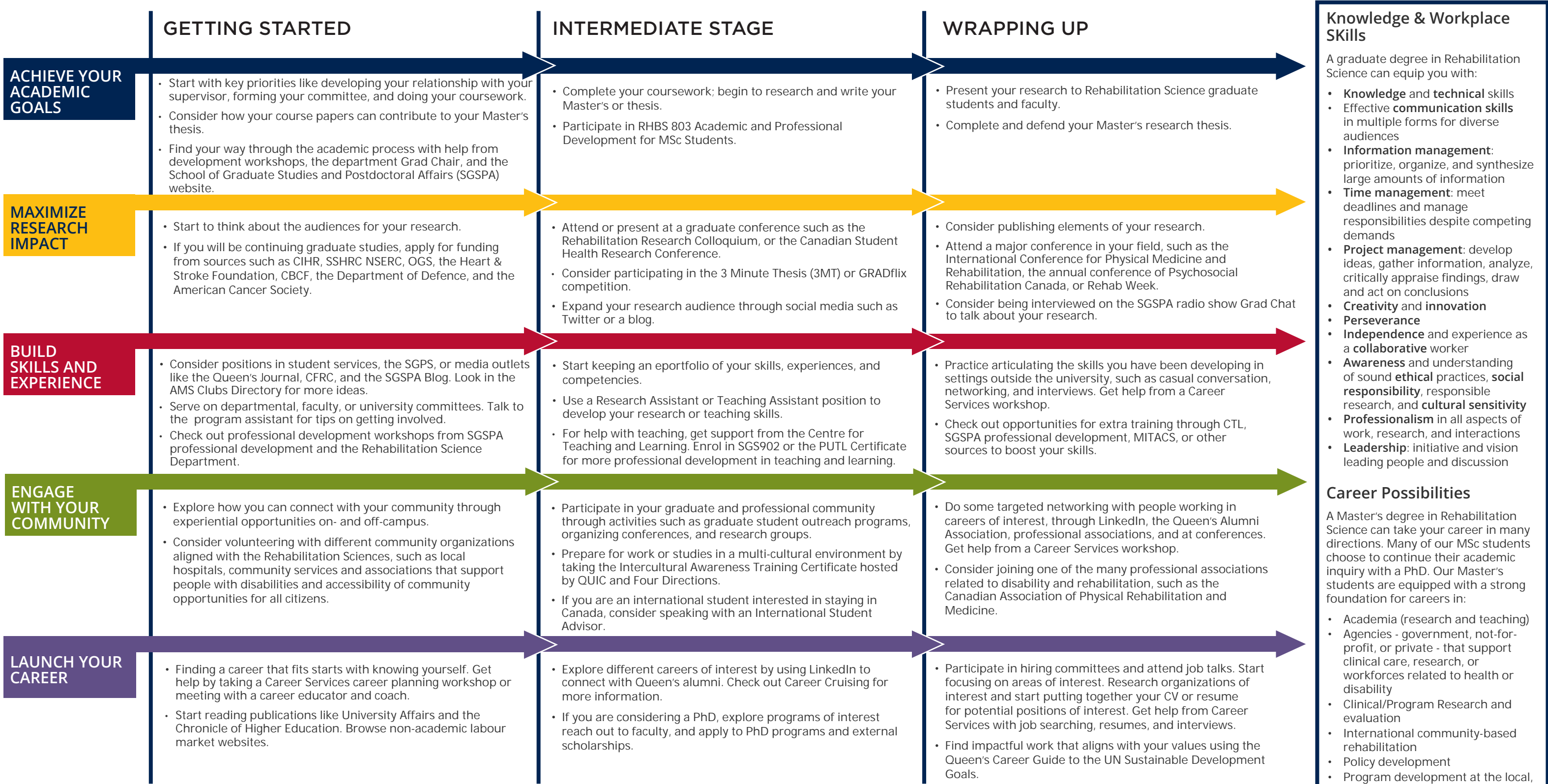


GRADUATE STUDIES AND POSTDOCTORAL AFFAIRS

queensu.ca/grad-postdoc

Rehabilitation Science MSc Map

MASTER OF SCIENCE (MSc)



Knowledge & Workplace Skills

A graduate degree in Rehabilitation Science can equip you with:

- Knowledge and technical skills**
- Effective communication skills** in multiple forms for diverse audiences
- Information management:** prioritize, organize, and synthesize large amounts of information
- Time management:** meet deadlines and manage responsibilities despite competing demands
- Project management:** develop ideas, gather information, analyze, critically appraise findings, draw and act on conclusions
- Creativity and innovation**
- Perseverance**
- Independence** and experience as a **collaborative** worker
- Awareness** and understanding of sound **ethical** practices, **social responsibility**, responsible research, and **cultural sensitivity**
- Professionalism** in all aspects of work, research, and interactions
- Leadership:** initiative and vision leading people and discussion

Career Possibilities

A Master's degree in Rehabilitation Science can take your career in many directions. Many of our MSc students choose to continue their academic inquiry with a PhD. Our Master's students are equipped with a strong foundation for careers in:

- Academia (research and teaching)
- Agencies - government, not-for-profit, or private - that support clinical care, research, or workforces related to health or disability
- Clinical/Program Research and evaluation
- International community-based rehabilitation
- Policy development
- Program development at the local, national or international level

Taking time to explore career options, build experience, and network can help you have a smooth transition to the world of work after graduation.

How to use this map

Use the 5 rows of the map to explore possibilities and plan for success in the five overlapping areas of career and academics. To make your own custom map, use the My Grad Map tool: careers.queensu.ca/gradmaps.

Graduate Studies FAQs

How do I make the most of my time at Queen's?

Use the Grad Map to plan for success in five overlapping areas of your career and academic life. Everyone's journey is different - the ideas on the maps are just suggestions to help you explore possibilities. For more support with your professional development, take advantage of the SGSPA professional development framework and the new Professional Development Plan (PDP) process to set customized goals to help you get career ready when you graduate.

Where can I get help?

Queen's provides you with a broad range of support services from your first point of contact with the university through to graduation. Ranging from help with academics and careers, to physical, emotional, or spiritual resources – our welcoming environment offers the programs and services you need to be successful, both academically and personally. Check out the [SGSPA website](#) for available resources.

What is the community like?

At Queen's, graduate students from all disciplines learn and discover in a close-knit intellectual community. You will find friends, peers and support among the graduate students enrolled in Queen's more than 130 graduate programs within 50+ departments & research centres. With the world's best scholars, prize-winning professional development opportunities, excellent funding packages and life in the affordable, historic waterfront city of Kingston, Queen's offers a wonderful environment for graduate studies. Queen's is an integral part of the Kingston community, with the campus nestled in the core of the city, only a 10-minute walk to downtown with its shopping, dining and waterfront. For more about Kingston's history and culture, see Queen's University's Discover Kingston page.

Application FAQs

What do I need to know to APPLY?

ACADEMIC REQUIREMENTS

- Honours Bachelor's degree or equivalent in a discipline related to rehabilitation science (e.g. physical therapy, occupational therapy, kinesiology, sociology, psychology, life sciences, engineering, etc.) Contact the program director to discuss how your studies to date may be related to rehabilitation sciences.
- **Grade requirements:** Upper second-class standing (B+). The entire transcript is reviewed but particular attention is given to your last 20 courses and how well you have progressed throughout your academic career.

ADDITIONAL REQUIREMENTS

- If English is not a native language, prospective students must meet the English language proficiency requirements in writing, speaking, reading, and listening. The following minimum scores are required: (1) TOEFL iBT: Writing (24/30); Speaking (22/30); Reading (22/30); Listening (20/30). Applicants must have the minimum score in each test as well as the minimum overall score, or (2) IELTS: 7.0 (academic module overall band score and a 7.0 for each test band), or (3) PTE Academics: 65, or (4) CAEL CE -70 (minimum overall score).

KEY DATES & DEADLINES

- **Application due:** February 15th.
- **Notification of acceptance:** Late April/ early May.

Before you start your application, please review the Graduate studies application process.

What about FUNDING?

Master's students in Rehabilitation Science are currently offered a minimum funding package of \$8,000 per year.

Apply for external funding from OGS, CIHR/NSERC, and other sources. See the School of Graduate Studies and Postdoctoral Affairs' information on awards and scholarships for more.



Rehabilitation
Science Program

Caitlin MacDonald
Research & Post Professional Programs Graduate Assistant

Email: caitlin.macdonald@queensu.ca

rehab.queensu.ca/academic-programs/rhbs