

# Translational Medicine MSc Map

## Applying to and Navigating Graduate Studies

GRAD MAP FOR MSc STUDENTS



### Why GRADUATE STUDIES in TRANSLATIONAL MEDICINE?

The Master of Science (MSc) in Translational Medicine is a unique research-based graduate program. The program provides students with a fresh perspective, offering a curriculum interweaving graduate level research with authentic clinical experiences in a multidisciplinary environment across departments at Queen's University.

Combining the fields of medicine and research, this program links graduate level research skills with a variety of clinical experiences including patient interactions, clinical observerships and medical rounds to enhance professional thinking and action. This innovative curriculum will offer important foundation work for future careers in the biomedical field, and will provide critical skills for pursuing careers that include clinician scientists, biomedical researchers, leaders in industry and public health and/or health policy.

### What is TRANSLATIONAL MEDICINE?

Translational Medicine is driven by our patients and their diseases. Guided by this primary focus, translational research spans across the spectrum from molecular and cell biology to preclinical models to patient studies and back again. Our programs aim to train the next generation of researchers to be effective translators of biomedical discovery. Our graduates will operate at the intersection of clinical and related sciences and will have the expertise to generate and lead discovery through an integrated process, increasing the efficiency of translating science knowledge into health improvement.



### Program STRUCTURE

The MSc in Translational Medicine is a 2-year research-based program, which requires the completion of 12-credit courses (3 core courses of 3-credits each, 1 additional 3-credit elective) and a thesis.

**Mini-Master's:** Students currently enrolled in the MSc in Translational Medicine with first-class standing, and who show exceptional promise in their research may be considered for promotion to the PhD in Translational Medicine, without completion of the MSc.

### Core COURSES

- **TMED 800** Translational Medicine
- **TMED 801** Profession of Medicine
- **TMED 802** Research Success Skills
- **TMED 865** Cell Imaging Analysis (OPTIONAL elective)

### Program HIGHLIGHTS

- Strengthen your academic education or enhance your career with advanced knowledge and skills
- Learn about translational medicine from an interdisciplinary perspective with authentic clinical experiences
- Experience team-based learning in a close-knit community
- Network with students, alumni, and leaders in this emerging field
- Complete a supervised project on a topic of your choice



*"The TMED program has offered me an unmatched opportunity to explore the intersection of science and clinical care. Through shadowing clinician-scientists and attending Medical Grand Rounds, I've gained firsthand insight into how research directly shapes patient outcomes. The program fosters interdisciplinary collaboration by connecting students with experts across diverse fields to challenge assumptions and drive innovation. The incredible TMED team offers mentorship, resources, and guidance that enable students to thrive and pursue research with real-world impact on patient care."*

- Victoria Mallett, MSc'26 (Candidate)

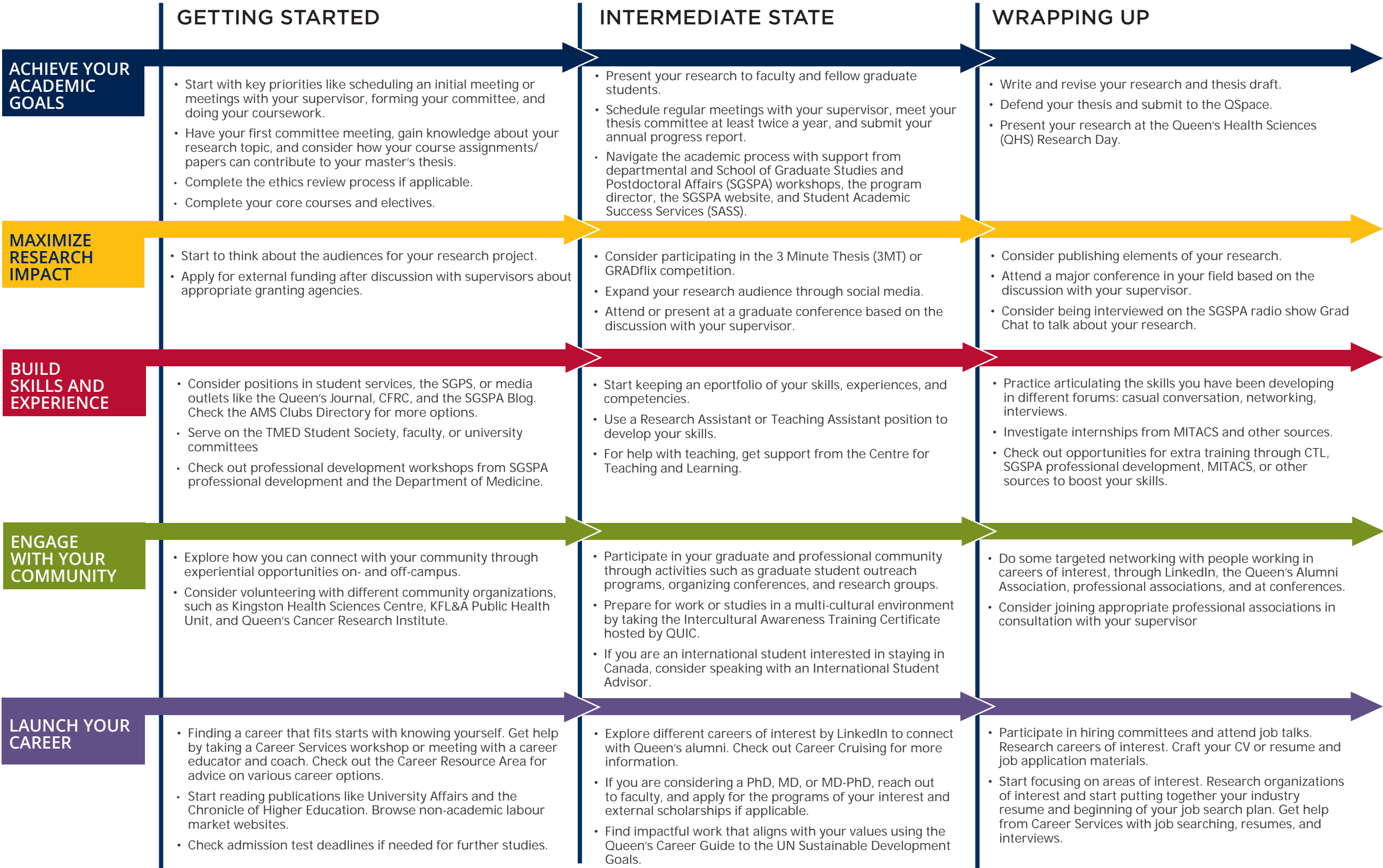


**GRADUATE STUDIES AND  
POSTDOCTORAL AFFAIRS**

[queensu.ca/grad-postdoc](https://queensu.ca/grad-postdoc)

# Translational Medicine MSc Map

MASTER OF SCIENCE (MSc)



### Knowledge & Workplace Skills

A Master's degree in Translational Medicine can equip you with:

- Knowledge and technical skills**
- Effective communication skills** in multiple forms for diverse audiences
- Information management:** prioritize, organize, and synthesize large amounts of information
- Time management:** Meet deadlines and manage responsibilities despite competing demands
- Project management:** develop ideas, gather information, analyze, critically appraise findings, draw and act on conclusions
- Creativity and innovation**
- Perseverance**
- Independence** and experience as a **collaborative** worker
- Awareness**, an understanding of sound **ethical** practices, **social responsibility**, responsible research, and **cultural sensitivity**
- Professionalism** in all aspects of work, research, and interactions
- Leadership:** initiative and vision leading people and discussion

### Career Possibilities

A Master's degree in Translational Medicine can take your career in many directions. Our students are equipped with a strong foundation for careers such as:

- Health research (research associates in universities, hospitals, government, public health units)
- Medicine
- Public Health and Health Policy

Taking time to explore career options, build experience, and network can help you have a smooth transition to the world of work after graduation.

### How to use this map

Use the 5 rows of the map to explore possibilities and plan for success in the five overlapping areas of career and academics. To make your own custom map, use the My Grad Map tool: [careers.queensu.ca/gradmaps](https://careers.queensu.ca/gradmaps).

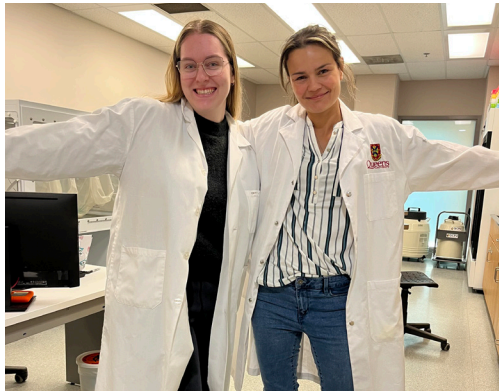
# Graduate Studies FAQs

## How do I make the most of my time at Queen's?

Use the Grad Map to plan for success in five overlapping areas of your career and academic life. Everyone's journey is different - the ideas on the maps are just suggestions to help you explore possibilities. For more support with your professional development, take advantage of the SGSPA professional development framework and the new Program Development Plan (PDP) process to set customized goals to help you get career ready when you graduate.

## Where can I get help?

Queen's provides you with a broad range of support services from your first point of contact with the university through to graduation. Ranging from help with academics and careers, to physical, emotional, or spiritual resources – our welcoming environment offers the programs and services you need to be successful, both academically and personally. Check out the [SGSPA website](#) for available resources.



# Application FAQs

## What do I need to know to APPLY?

### APPLICATION DEADLINE

- February 1

### ACADEMIC REQUIREMENTS

- An undergraduate honours degree from a recognized university with a minimum of a B+ average in the last two years. At Queen's, a B+ is equivalent to a percentage conversion of 77-79.9% and a Grade Point Average of 3.3 (out of 4.3).

### ADDITIONAL REQUIREMENTS

- Applications for admission are completed and submitted on the School of Graduate Studies and Postdoctoral Affairs (SGSPA) website, including an online application form and specific instructions regarding how to submit the following documents:
  - A Statement of Interest about how applicants' background experiences and career aspirations make them ideally suited for the program (up to 4000 characters in the online application);
  - Transcripts for all postsecondary education;
  - Two references from individuals familiar with the applicant's academic performance
- Applicants are required to submit an electronic resumé/curriculum vitae to [tmed@queensu.ca](mailto:tmed@queensu.ca).

### LANGUAGE REQUIREMENTS

- In cases where English is not the first language, nor was the language of instruction in undergraduate studies, applicants must demonstrate English language proficiency. Those applicants will need to provide proof of English language proficiency through one of the following:
  - International English Language Testing System (Academic module) with a minimum score of 7 in each component, or
  - TOEFL iBT with a passing score of 93 including a minimum score of 24 on the speaking section.

Before you start your application, please review the Graduate studies application process.

## What about FUNDING?

We currently offer our master's students a minimum funding of \$25,000 per year for two years.

Apply for external funding from the Ontario Graduate Scholarship, CIHR/NSERC, and other sources. See the School of Graduate Studies and Postdoctoral Affairs' information on awards and scholarships for more.



TRANSLATIONAL  
MEDICINE

Translational Medicine Graduate Program  
Department of Medicine  
Etherington Hall, Room 1040  
[tmed@queensu.ca](mailto:tmed@queensu.ca)  
[deptmed.queensu.ca/tmed](http://deptmed.queensu.ca/tmed)