

Translational Medicine PhD Map

Applying to and Navigating Graduate Studies

Why GRADUATE STUDIES in TRANSLATIONAL MEDICINE?

The Doctor of Philosophy (PhD) in Translational Medicine is a unique research-based graduate program. The program provides students with a fresh perspective, offering a curriculum interweaving graduate level research with authentic clinical experiences in a multidisciplinary environment across departments at Queen's University.

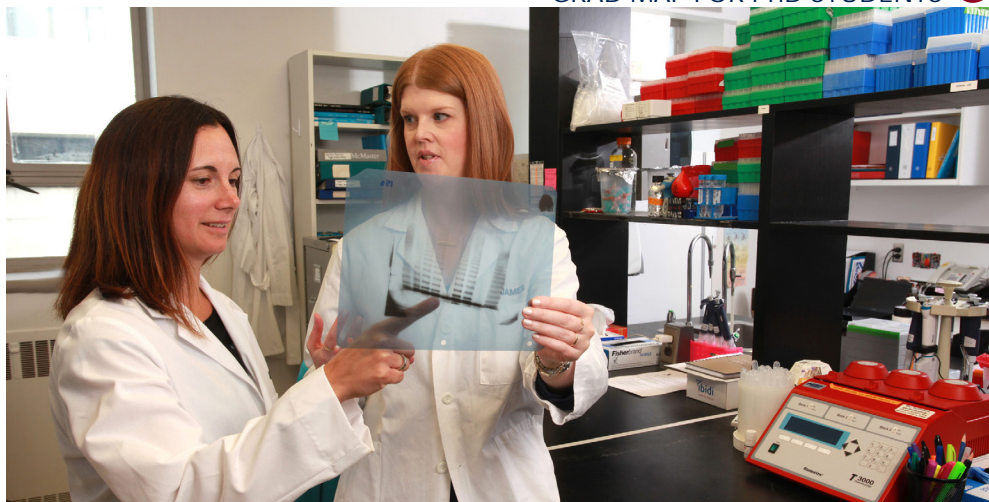
Combining the fields of medicine and research, this program links graduate level research skills with a variety of clinical experiences including patient interactions, clinical observerships, and medical rounds to enhance professional thinking and action. This innovative curriculum will offer important foundation work for future careers in the biomedical field, and will provide critical skills for pursuing careers that include clinician scientists, biomedical researchers, leaders in industry, and public health and/or health policy.

What is TRANSLATIONAL MEDICINE?

Translational Medicine is driven by our patients and their diseases. Guided by this primary focus, translational research spans across the spectrum from molecular and cell biology to preclinical models to patient studies and back again. Our programs aim to train the next generation of researchers to be effective translators of biomedical discovery. Our graduates will operate at the intersection of clinical and related sciences and will have the expertise to generate and lead discovery through an integrated process, increasing the efficiency of translating science knowledge into health improvement.



GRAD MAP FOR PhD STUDENTS 



Program STRUCTURE

The PhD in Translational Medicine is a 4-year research-based program, which requires the completion of 12-credit courses (3 core courses 3-credits each, 1 3-credit elective), a comprehensive exam, and a thesis.

Visit the Translational Medicine website to read faculty profiles and learn more about their research areas and groups. When you find a faculty member with similar research interests to yours, contact them and tell them about your interest in graduate work and related experience.

Core COURSES

- TMED 800 Translational Medicine
- TMED 801 Profession of Medicine
- TMED 802 Research Success Skills
- TMED 865 Cell Imaging Analysis (OPTIONAL elective)

Program HIGHLIGHTS

- Strengthen your academic education or enhance your career with advanced knowledge and skills
- Learn about translational medicine from an interdisciplinary perspective with authentic clinical experiences
- Experience team-based learning in a close-knit community
- Network with students, alumni, and leaders in this emerging field
- Complete a supervised project on a topic of your choice



"The TMED program is truly one-of-a-kind! From the small class sizes with one-on-one academic support to the collaborative, enriching learning environment, the program nurtures students' growth, success, and overall wellbeing. Unique perspectives and experiences are not only welcomed but embraced as they guide critical thinking and analytical skills in trainees. There's a place for everyone in TMED!"

- Lubnaa Hossenbaccus, PhD'26
(Candidate)

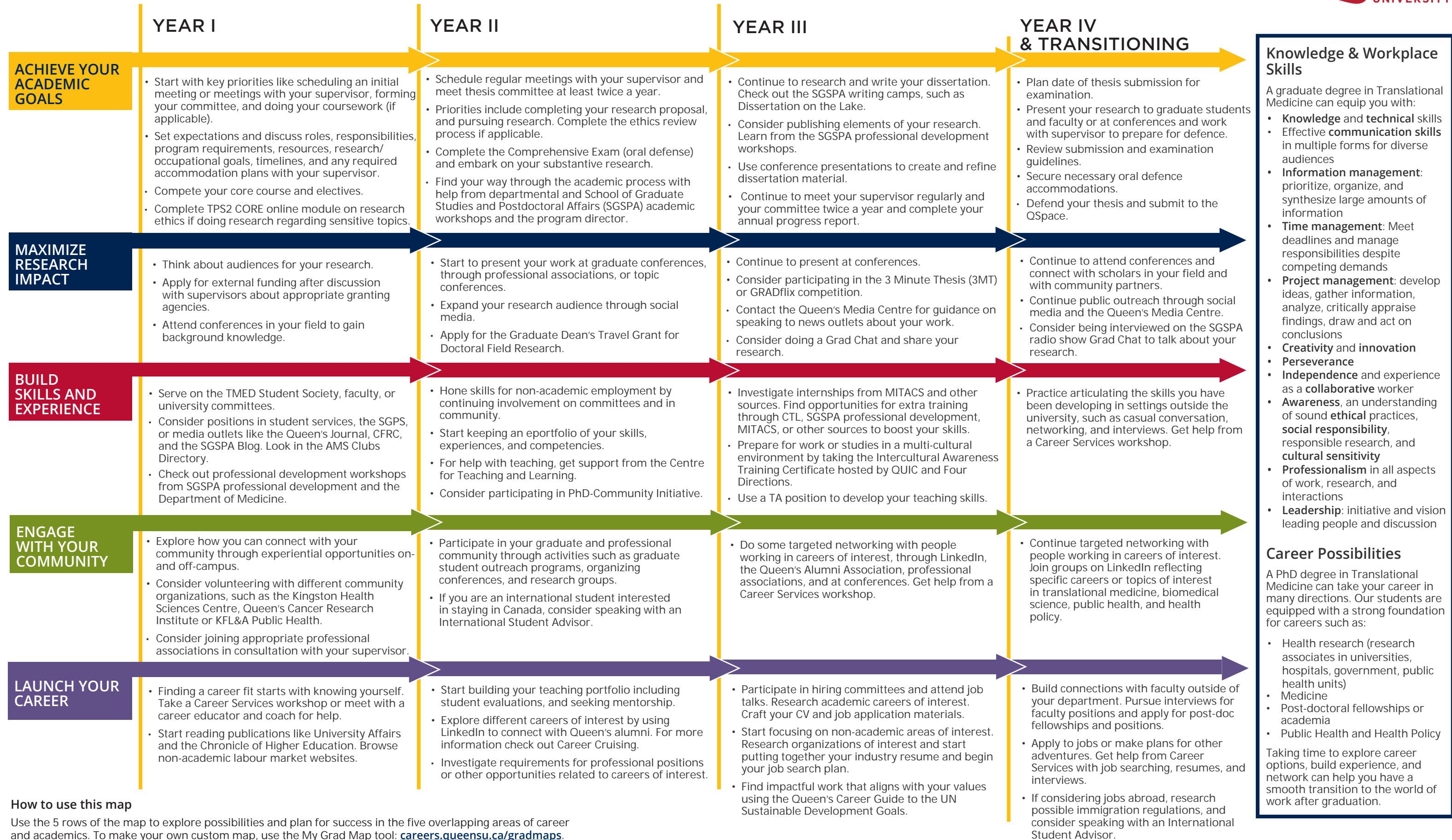


GRADUATE STUDIES AND
POSTDOCTORAL AFFAIRS

queensu.ca/grad-postdoc

Translational Medicine PhD Map

DOCTOR OF PHILOSOPHY (PhD)



How to use this map

Use the 5 rows of the map to explore possibilities and plan for success in the five overlapping areas of career and academics. To make your own custom map, use the My Grad Map tool: careers.queensu.ca/gradmaps.

Graduate Studies FAQs

How do I make the most of my time at Queen's?

Use the Grad Map to plan for success in five overlapping areas of your career and academic life. Everyone's journey is different - the ideas on the maps are just suggestions to help you explore possibilities. For more support with your professional development, take advantage of the SGSPA professional development framework and the new Professional Development Plan (PDP) process to set customized goals to help you get career ready when you graduate.

Where can I get help?

Queen's provides you with a broad range of support services from your first point of contact with the university through to graduation. Ranging from help with academics and careers, to physical, emotional, or spiritual resources – our welcoming environment offers the programs and services you need to be successful, both academically and personally. Check out the [SGSPA website](#) for available resources.

What is the community like?

At Queen's, graduate students from all disciplines learn and discover in a close-knit intellectual community. You will find friends, peers and support among the graduate students enrolled in Queen's more than 130 graduate programs within 50+ departments & research centres. With the world's best scholars, prize-winning professional development opportunities, excellent funding packages and life in the affordable, historic waterfront city of Kingston, Queen's offers a wonderful environment for graduate studies. Queen's is an integral part of the Kingston community, with the campus nestled in the core of the city, only a 10-minute walk to downtown with its shopping, dining and waterfront. For more about Kingston's history and culture, see Queen's University's Discover Kingston page.

Application FAQs

What do I need to know to APPLY?

APPLICATION DEADLINE

- February 1

ACADEMIC REQUIREMENTS

- A master's degree from a recognized university with a minimum of an A- average. At Queen's an A- is equivalent to a percentage conversion of 80-84.9% and a Grade Point Average of 3.7 (out of 4.3).

ADDITIONAL REQUIREMENTS

- Applications for admission are completed and submitted on the School of Graduate Studies and Postdoctoral Affairs website, including an online application form and specific instructions regarding how to submit the following documents:
 - A Statement of Interest about how applicants' background experiences and career aspirations make them ideally suited for the program (up to 4,000 characters in the online application);
 - Transcripts for all postsecondary education;
 - Two references from individuals familiar with the applicant's academic performance
- Applicants are required to submit an electronic resumé/curriculum vitae to tmed@queensu.ca.

LANGUAGE REQUIREMENTS

- In cases where English is not the first language, nor was the language of instruction in undergraduate studies, applicants must demonstrate English language proficiency. Those applicants will need to provide proof of English language proficiency through one of the following:
 - International English Language Testing System (Academic module) with a minimum score of 7 in each component, or
 - TOEFL iBT with a passing score of 93 including a minimum score of 24 on the speaking section.

Before you start your application, please review the Graduate studies application process.

What about FUNDING?

We currently offer our PhD students a minimum funding of \$26,000 per academic year.

Apply for external funding from the Ontario Graduate Scholarship, CIHR/NSERC, and other sources. See the School of Graduate Studies and Postdoctoral Affairs' information on awards and scholarships for more.



Queen's
UNIVERSITY

**TRANSLATIONAL
MEDICINE**

Translational Medicine Graduate Program

Department of Medicine

Etherington Hall, Room 1040

tmed@queensu.ca

deptmed.queensu.ca/tmed