

Anatomical Sciences MSc Map

Applying to and Navigating Graduate Studies

GRAD MAP FOR MSc STUDENTS →

Why GRADUATE STUDIES in ANATOMICAL SCIENCES?

The Department of Biomedical and Molecular Sciences at Queen's University offers a 16 month Master of Science program in Anatomical Sciences.

This program is structured around three pillars of competency (content, pedagogy, inquiry) and designed to educate students interested in the art of teaching and designing curricula in the anatomical sciences. Graduates of our MSc Anatomical Sciences program have pursued careers at both Canadian and foreign colleges and universities as health services education co-ordinators or have gone on to further their education as medical students or PhD students.

POTENTIAL RESEARCH at QUEEN'S

At Queen's, our established strengths are in the areas of cancer, injury, obesity, disability, and mental health epidemiology as well as research in various health services contexts including public health, primary care, cancer care, and critical care. We also have some emerging strengths in the areas of Northern health, Indigenous health, and global health studies.



Program STRUCTURE

MSc (Anatomical Sciences): 16 months Full Time

Course WORK

- Advanced Gross Anatomy
- Advanced Topics in Embryology
- Advanced Topics in Histology & Histology Techniques
- Advanced Topics in Neuroanatomy
- Curriculum Design
- Independent Studies in Anatomy & Cell Biology/Pedagogy
- Microteaching
- Principles of Teaching & Learning

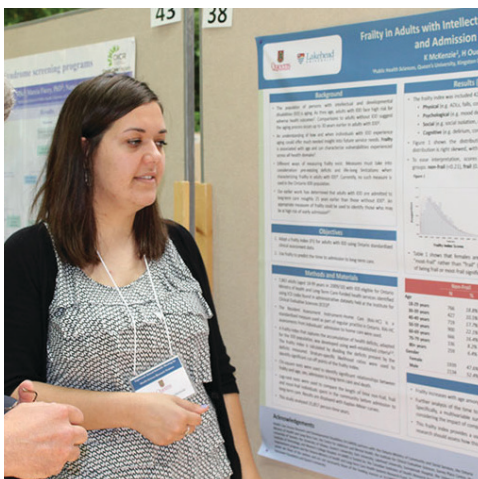
"This program is one of the most well rounded and well equipped of its kind. It presents students with an array of opportunities for skill development, and the people that are/or have been a part of it are the testament to this fact. While challenging at times, the knowledge and experiences you gain are totally worth it."

– Maria Komisarenko, Class of 2011

Visit the [Biomedical & Molecular Medicine](#) website for more details on research areas. When you find a faculty member with similar research interests to yours, contact them and tell them about your interest in graduate work and related experience.

PRACTICUM

- Digital Imaging Techniques for Gross Anatomy
- Electronic Media
- Embalming Techniques
- Freeze Drying Techniques
- Histology
- Lecturing & Demonstrating
- Museum Specimen Production
- Neuroanatomy
- Plastination Techniques

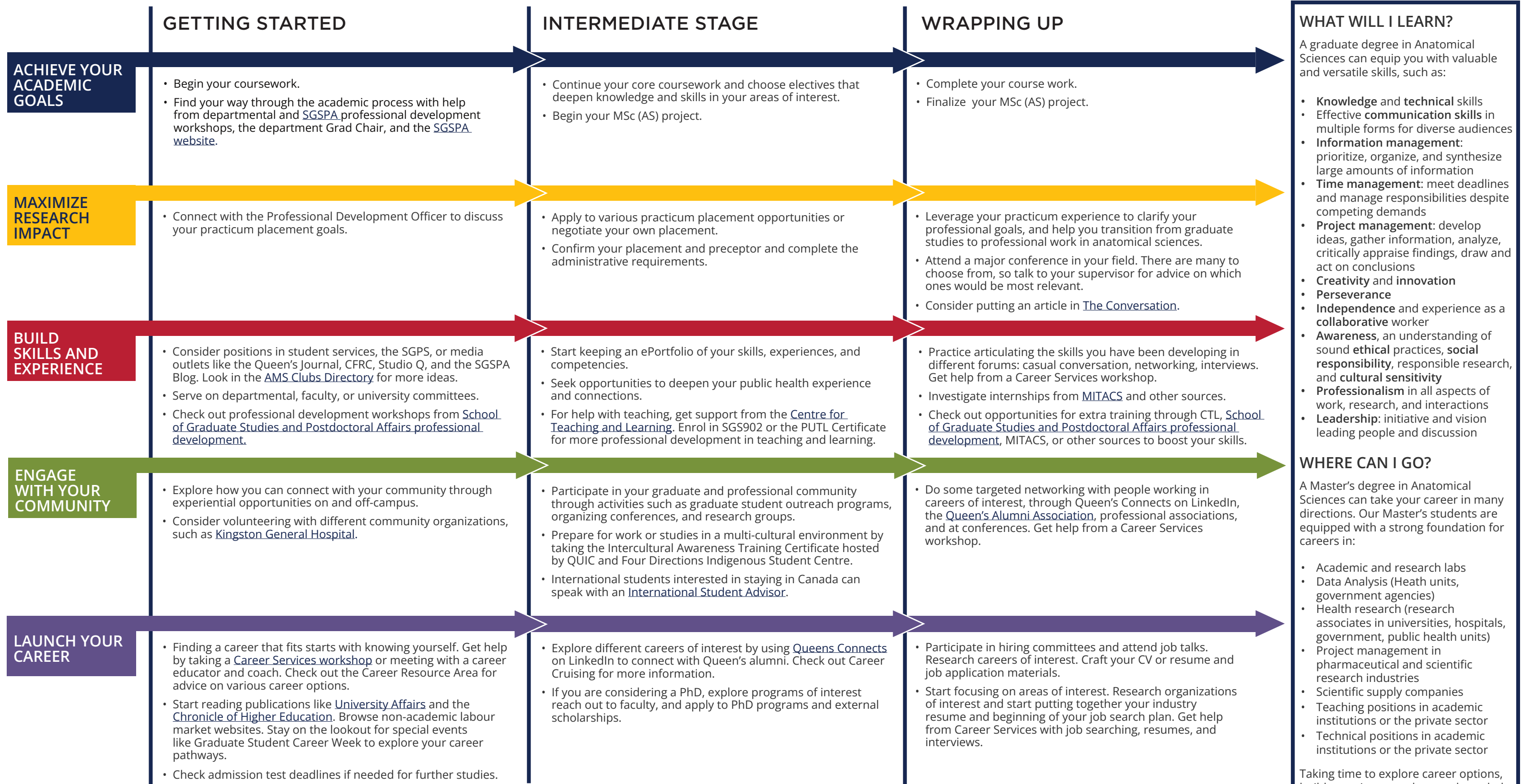


GRADUATE STUDIES AND POSTDOCTORAL AFFAIRS

2023-2024

Anatomical Sciences MSc Map

MASTER OF SCIENCE (MSc)



WHERE CAN I GO?

A Master's degree in Anatomical Sciences can take your career in many directions. Our Master's students are equipped with a strong foundation for careers in:

- Academic and research labs
- Data Analysis (Health units, government agencies)
- Health research (research associates in universities, hospitals, government, public health units)
- Project management in pharmaceutical and scientific research industries
- Scientific supply companies
- Teaching positions in academic institutions or the private sector
- Technical positions in academic institutions or the private sector

Taking time to explore career options, build experience, and network can help you have a smooth transition to the world of work after graduation.

How to use this map

Use the 5 rows of the map to explore possibilities and plan for success in the five overlapping areas of career and academics. The map just offers suggestions – you don't have to do it all! To make your own custom map, use the [My Grad Map](#) tool.

Graduate Studies FAQs

How do I make the most of my time at Queen's?

Use the Grad Map to plan for success in five overlapping areas of your career and academic life. Everyone's journey is different - the ideas on the maps are just suggestions to help you explore possibilities. For more support with your professional development, take advantage of the SGSPA professional development framework and the new [Individual Development Plan \(IDP\)](#) process to set customized goals to help you get career ready when you graduate.

Where can I get help?

Queen's provides you with a broad range of support services from your first point of contact with the university through to graduation. Ranging from help with academics and careers, to physical, emotional, or spiritual resources - our welcoming environment offers the programs and services you need to be successful, both academically and personally. Check out the [SGSPA website](#) for available resources.

What is the community like?

At Queen's, graduate students from all disciplines learn and discover in a close-knit intellectual community. You will find friends, peers and support among the graduate students enrolled in Queen's more than 130 graduate programs within 50+ departments & research centres. With the world's best scholars, prize-winning professional development opportunities, excellent funding packages and life in the affordable, historic waterfront city of Kingston, Queen's offers a wonderful environment for graduate studies. Queen's is an integral part of the Kingston community, with the campus nestled in the core of the city, only a 10-minute walk to downtown with its shopping, dining and waterfront. For more about Kingston's history and culture, see Queen's University's [Discover Kingston](#) page.

Application FAQs

What do I need to know to APPLY?

ACADEMIC REQUIREMENTS

- Recognized BSc degree with a background in Biology or Health Sciences or equivalent professional degrees (BNSc, BSc PT).
- **Grade requirements:** Minimum B+ over 2nd to 4th years, over all courses taken.

ADDITIONAL REQUIREMENTS

- If English is not a native language, prospective students must meet the [English language proficiency requirements](#) in writing, speaking, reading, and listening.
- If required, TOEFL scores of 550 (paper-based) or TOEFL iBT minimum scores of: writing (24/30); speaking (22/30); reading (22/30); listening (20/30), for a total of 88/120. Applicants must have the minimum score in each test as well as the minimum overall score.

KEY DATES & DEADLINES

- **Application due:** February 15.
- Short listed candidates will be interviewed in April for a September start.

KEY DATES & DEADLINES

- Funding for students enrolled in our MSc Anatomical Sciences program is variable.

Before you start your application, please review the [Graduate studies application process](#).



DEPARTMENT OF
BIOMEDICAL &
MOLECULAR SCIENCES

Heather Lumb

Program Assistant
Department of Biomedical and Molecular Sciences
h.lumb@queensu.ca
dbms.queensu.ca