

Biomedical & Molecular Sciences MSc Map

Applying to and Navigating Graduate Studies

GRAD MAP FOR MSc STUDENTS →

Why GRADUATE STUDIES in BIOMEDICAL & MOLECULAR SCIENCES?

Graduate students and their work are an important part of an ongoing research process that provides the scientific community with ways of understanding fundamental biomedical and molecular processes underlying normal cellular and microbial processes, organ system function, and human disease. The faculty, staff, and trainees in Biomedical and Molecular Sciences are engaged in world-class research and teaching, attracting, and mentoring the best students, the finest educators, dedicated support staff, and internationally-competitive researchers. We value curiosity, creativity, commitment, and collegiality.

Why QUEEN'S?

The Biomedical and Molecular Sciences Department at Queen's provides a cross-disciplinary environment and delivers the programs in a collaborative and integrated manner. This interdisciplinary approach gives candidates access to over 80 faculty

"The Department provides an environment that encourages collaboration with numerous researchers with a wide variety of interests and expertise."

– Nikki Philbrook, PhD



members engaged in a broad spectrum of biomedical research, using techniques to address questions concerning single molecules, cellular/microbial function, organ-systems, and whole-animal biology.

Program STRUCTURE

MSc (2 years, full time): Course work, seminars, research project, and thesis with oral defense.

Fields of SPECIALIZATION

- Biochemistry and Cell Biology: focuses on understanding the fundamental processes of life and human disease.
- Experimental Medicine: employs interdisciplinary methods to explore the processes responsible for both the normal and diseased state.
- Microbes, Immunity, and Inflammation: focuses on questions at the cellular and molecular level involving viral and bacterial organisms and the immune system.
- Reproduction and Developmental Sciences: spans clinical and basic science, with a focus on fertilization and embryo implantation, perinatal health, women's health, and more.

- Therapeutics, Drug Development, and Human Toxicology: focuses on the effects, both beneficial and deleterious, of chemicals including drugs and environmental contaminants, on human health.

We encourage you to identify an area of research interest and contact a potential supervisor before applying.

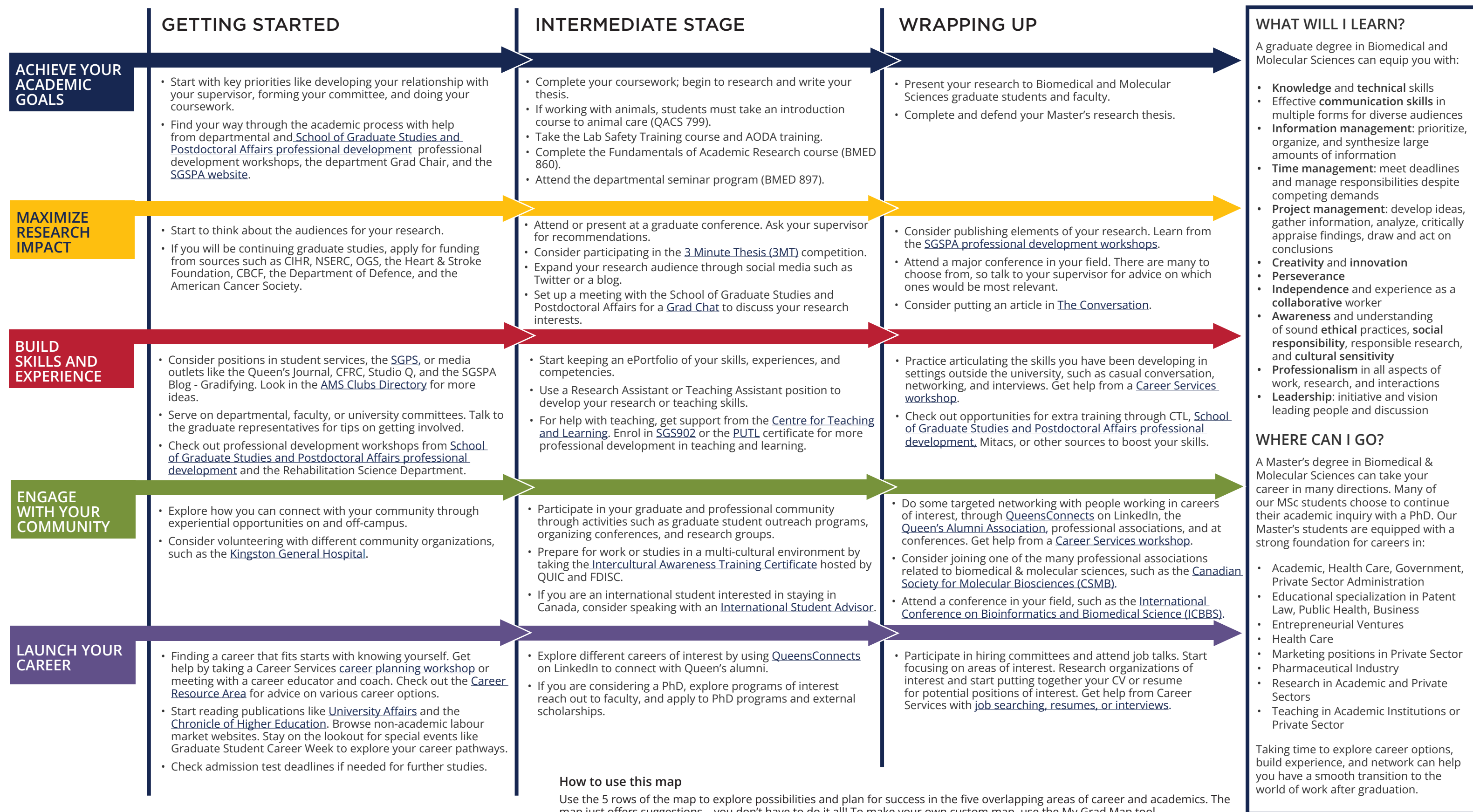


Visit the [Biomedical and Molecular Sciences website](#) to read faculty profiles, and learn more about faculty members' research areas and research groups. When you find a faculty member with similar research interests to yours, contact them and tell them about your interest in graduate work and related experience.

See the Biomedical and Molecular Sciences Graduate [Student Handbook](#) online for more detailed information about the program.

Biomedical & Molecular Sciences MSc Map

MASTER OF SCIENCE (MSc)



How to use this map

Use the 5 rows of the map to explore possibilities and plan for success in the five overlapping areas of career and academics. The map just offers suggestions – you don't have to do it all! To make your own custom map, use the [My Grad Map](#) tool.

Graduate Studies FAQs

How do I make the most of my time at Queen's?

Use the Grad Map to plan for success in five overlapping areas of your career and academic life. Everyone's journey is different - the ideas on the maps are just suggestions to help you explore possibilities. For more support with your professional development, take advantage of the SGSPA professional development framework and the new [Individual Development Plan \(IDP\)](#) process to set customized goals to help you get career ready when you graduate.

Where can I get help?

Queen's provides you with a broad range of support services from your first point of contact with the university through to graduation. Ranging from help with academics and careers, to physical, emotional, or spiritual resources – our welcoming environment offers the programs and services you need to be successful, both academically and personally. Check out the [SGSPA website](#) for available resources.

What is the Queen's graduate community like?

At Queen's, graduate students from all disciplines learn and discover in a close-knit intellectual community. You will find friends, peers and support among the graduate students enrolled in Queen's more than 130 graduate programs within 50+ departments & research centres. With the world's best scholars, prize-winning professional development opportunities, excellent funding packages and life in the affordable, historic waterfront city of Kingston, Queen's offers a wonderful environment for graduate studies. Queen's is an integral part of the Kingston community, with the campus nestled in the core of the city, only a 10-minute walk to downtown with its shopping, dining and waterfront. For more about Kingston's history and culture, see Queen's University's [Discover Kingston](#) page.

Application FAQs

What do I need to know to APPLY?

ACADEMIC REQUIREMENTS

- Recognized honours degree with a background in Biology or Health Sciences or equivalent professional degrees (eg. BNC., BSc, PT).
- **Grade requirements:** B+ (77-79.9%) in the second, third, and fourth years of an Honours Bachelor's degree.

ADDITIONAL REQUIREMENTS

- If English is not a native language, prospective students must meet the [English language proficiency requirements](#) in writing, speaking, reading, and listening. The following minimum scores are required: (1) TOEFL iBT: Writing (24/30); Speaking (22/30); Reading (22/30); Listening (20/30). Applicants must have the minimum score in each test as well as the minimum overall score, or (2) IELTS: 7.0 (academic module overall band score and a 7.0 for each test band), or (3) PTE Academics: 65, or (4) CAEL CE -70 (minimum overall score).

KEY DATES & DEADLINES

- **Application due:** March 1st (To be considered for internal awards). Flexible deadline.
- **Notification of acceptance:** Pending confirmation of a supervisor.

Before you start your application, please review the [Graduate studies application process](#).

What about FUNDING?

The total minimum guaranteed stipend is \$25,500 per academic year for MSc students in Biomedical and Molecular Sciences. This includes \$4,500 in TAsip earnings per year.

There will also be opportunities for additional TAsip earnings throughout the academic year for MSc students that are on top of the minimum guaranteed stipends.

Apply for external funding from OGS, CIHR/NSERC, and other sources. Queen's will automatically issue a one time \$5,000 top-up to Master's winners of federal government tri-council awards. See the School of Graduate Studies and Postdoctoral Affairs' information on [awards and scholarships](#) for more.



Queen's
UNIVERSITY

DEPARTMENT OF
BIOMEDICAL &
MOLECULAR SCIENCES

Wendy Cumpson, Graduate Assistant
Email: cumpsonw@queensu.ca
Website: dbms.queensu.ca/graduate