

# Civil Engineering MEng Map

## Applying to and Navigating Graduate Studies

GRAD MAP FOR MEng STUDENTS 

### Why GRADUATE STUDIES in CIVIL ENGINEERING?

As a Master's student in the field of Civil Engineering, you can play a vital role in future developments in such areas as design of foundations, water quality, sediment transportation, pipeline flow, construction and rehabilitation of structures, and many other areas. Civil Engineering has a wide range of applications that contribute to modern life and its infrastructure.

Graduate students and their work are an important part of an ongoing research process that provides the community with ways of understanding natural, cultural, imaginative, social, and technological phenomena.

### Why QUEEN'S?

As a Master's student in Civil Engineering at Queen's you are part of one of the most research intensive universities in Canada. Our research program is internationally renowned with a wide range of research activities in all of the major specialization areas of Civil Engineering.

The Queen's graduate programs in Civil Engineering are home to some of the finest minds in the fields of civil and environmental engineering. Students have the chance to study engineering in an environment where multidisciplinary research and activities are encouraged and facilitated.



*The Civil Engineering Department's objective is to provide a broadly-based education in civil engineering which is intrinsically supported by world-class research in the areas of Structural, Geotechnical, Hydrotechnical, and Environmental Engineering.*

### Program STRUCTURE

**MEng (1 year):** Complete 8 term length courses pre-approved by the department.

### STUDY Areas

- Environmental Engineering
- Geotechnical Engineering
- Hydrotechnical Engineering
- Structural Engineering

Visit the [Civil Engineering website](#) to read course descriptions.

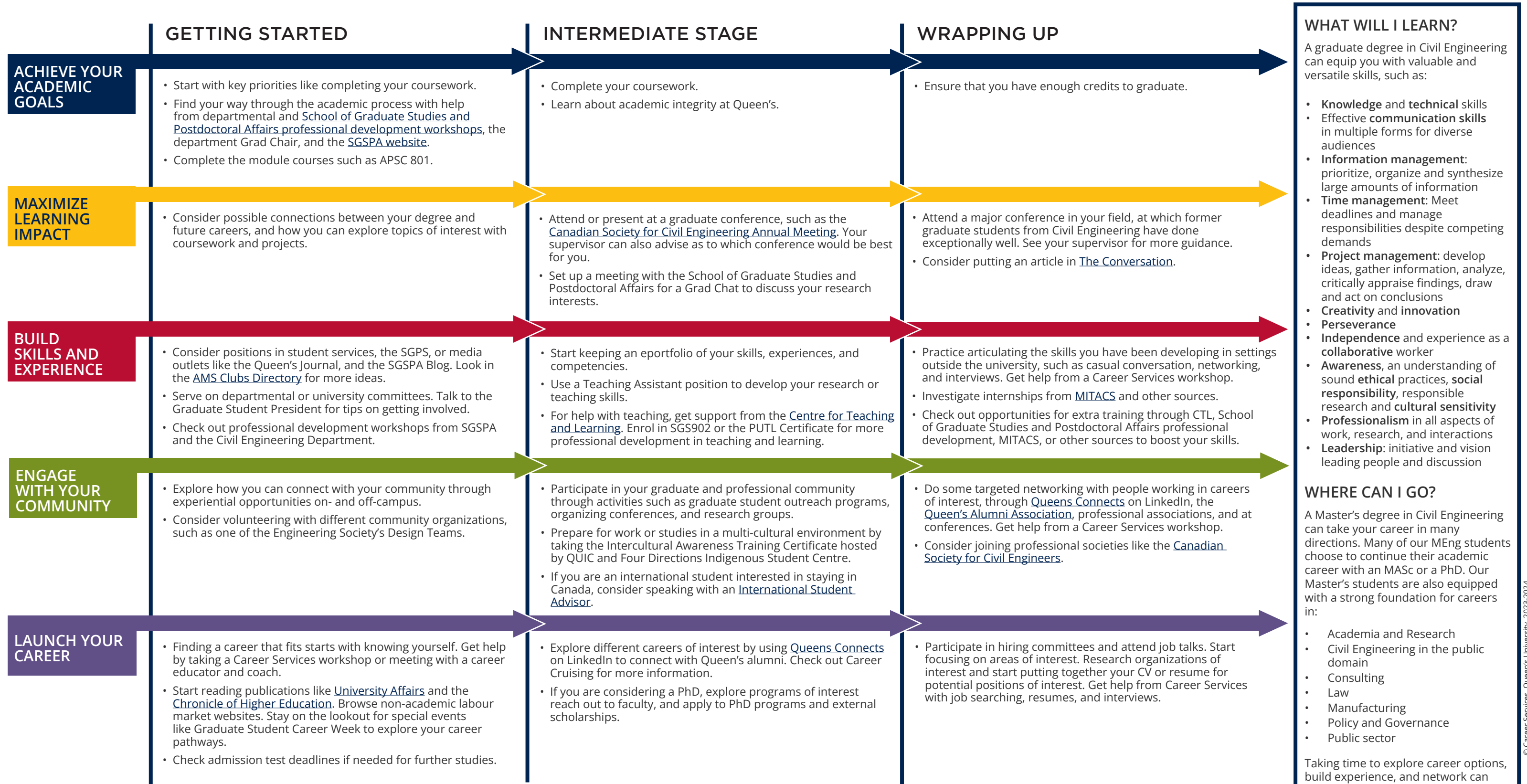


**SMITH  
ENGINEERING**  
Queen's University

**GRADUATE STUDIES AND  
POSTDOCTORAL AFFAIRS**

# Civil Engineering MEng Map

MASTER OF ENGINEERING (MEng)



**WHERE CAN I GO?**

A Master's degree in Civil Engineering can take your career in many directions. Many of our MEng students choose to continue their academic career with an MASc or a PhD. Our Master's students are also equipped with a strong foundation for careers in:

- Academia and Research
- Civil Engineering in the public domain
- Consulting
- Law
- Manufacturing
- Policy and Governance
- Public sector

Taking time to explore career options, build experience, and network can help you have a smooth transition to the world of work after graduation.

**How to use this map**

Use the 5 rows of the map to explore possibilities and plan for success in the five overlapping areas of career and academics. The map just offers suggestions – you don't have to do it all! To make your own custom map, use the [My Grad Map](#) tool.

# Graduate Studies FAQs

## How do I make the most of my time at Queen's?

Use the Grad Map to plan for success in five overlapping areas of your career and academic life. Everyone's journey is different - the ideas on the maps are just suggestions to help you explore possibilities. For more support with your professional development, take advantage of the SGSPA professional development framework and the new [Individual Development Plan \(IDP\)](#) process to set customized goals to help you get career ready when you graduate.

## Where can I get help?

Queen's provides you with a broad range of support services from your first point of contact with the university through to graduation. Ranging from help with academics and careers, to physical, emotional, or spiritual resources - our welcoming environment offers the programs and services you need to be successful, both academically and personally. Check out the [SGSPA website](#) for available resources.

## What is the community like?

At Queen's, graduate students from all disciplines learn and discover in a close-knit intellectual community. You will find friends, peers and support among the graduate students enrolled in Queen's more than 130 graduate programs within 50+ departments & research centres. With the world's best scholars, prize-winning professional development opportunities, excellent funding packages and life in the affordable, historic waterfront city of Kingston, Queen's offers a wonderful environment for graduate studies. Queen's is an integral part of the Kingston community, with the campus nestled in the core of the city, only a 10-minute walk to downtown with its shopping, dining and waterfront. For more about Kingston's history and culture, see Queen's University's [Discover Kingston](#) page.

# Application FAQs

## What do I need to know to APPLY?

### ACADEMIC REQUIREMENTS

- 4-year Bachelor's degree in Engineering or a cognate science.
- **Grade requirements:** minimum B (70%+) average over the four years of undergraduate study. Grades in specific courses in the final two years are also considered.

### ADDITIONAL REQUIREMENTS

- If English is not a native language, prospective students must meet the [English language proficiency requirements](#) in writing, speaking, reading, and listening. The following minimum scores are required: (1) TOEFL iBT: Writing (24/30); Speaking (22/30); Reading (22/30); Listening (20/30). Applicants must have the minimum score in each test as well as the minimum overall score, or (2) IELTS: 7.0 (academic module overall band score and a 7.0 for each test band), or (3) PTE Academics: 65, or (4) CAEL CE -70 (minimum overall score).

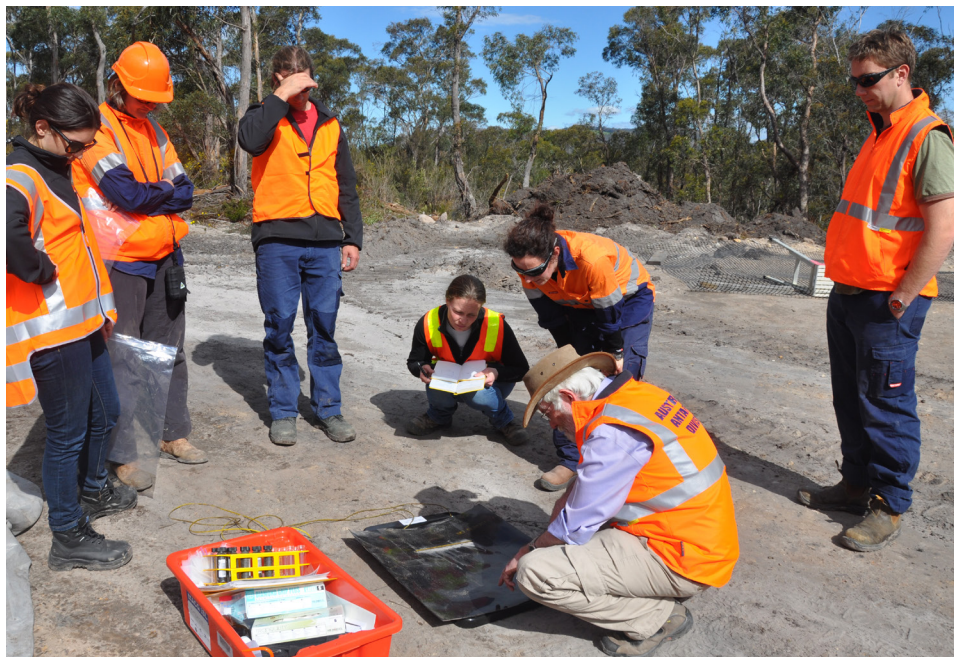
### KEY DATES & DEADLINES

- **Application deadline:** March 1st.
- **Notification of acceptance:** 2-3 months after the full application has been received.

Before you start your application, please review the [Graduate studies application process](#).

## What about FUNDING?

Civil Engineering MEng graduate students are required to be self-funded.



Debbie Ritchie, Graduate Assistant  
(613) 533-6000 ext. 79359  
debbie.ritchie@queensu.ca  
civil.queensu.ca/graduate-studies