

Classics and Archaeology MA Map

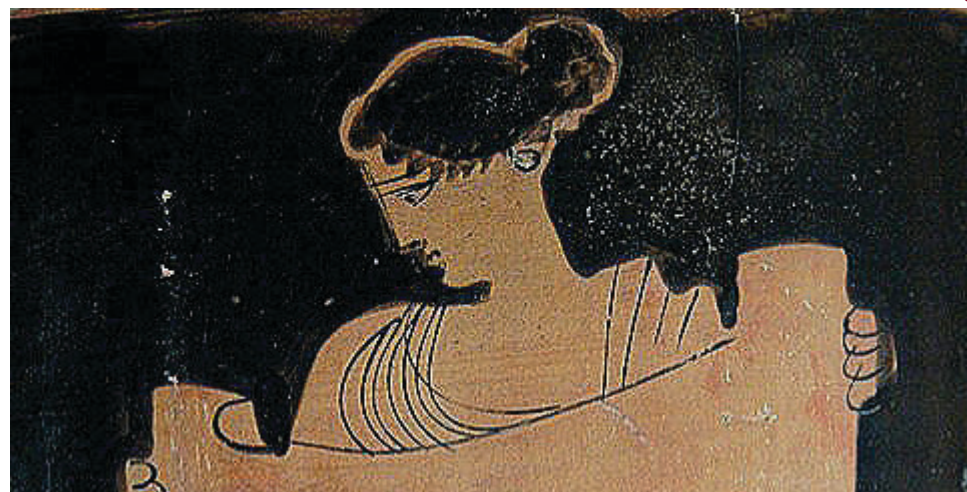
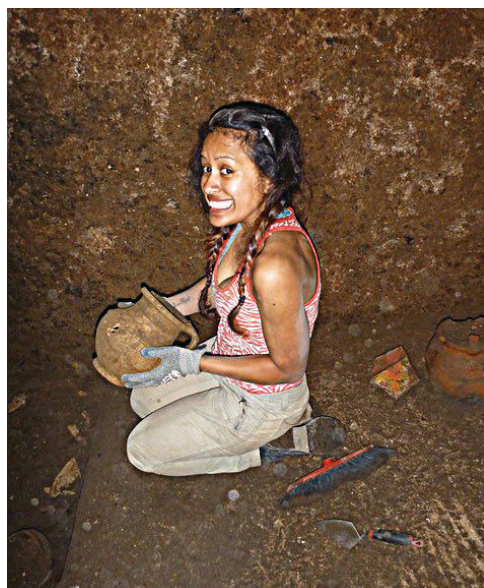
Applying to and Navigating Graduate Studies

Why GRADUATE STUDIES in CLASSICS AND ARCHAEOLOGY?

Studying Classics and Archaeology leads to a wider appreciation of human values and achievements, and a more objective understanding of ourselves and our times. Multi-disciplinary in approach, Classics and Archaeology involves the studies of history, literature, archaeology, religion, mythology, drama, and philosophy, in addition to the ancient languages of Greek and Latin. Today our understanding of Greek and Roman culture is further enhanced by the latest digital techniques that increasingly pervade studies in archaeology, epigraphy, papyrology, ancient science, and medicine.

Why QUEEN'S?

The Queen's MA program stands out for its broad and interdisciplinary nature. Because our graduate program is relatively small, we are able to provide our students with individual attention and support. Our faculty members have expertise in Greek and Roman archaeology, history, ancient science, language, and literature, so your research opportunities are vast and varied. You will also have opportunities to get hands-on, global archaeological field experience by taking part in faculty-supervised digs around the Mediterranean world.



FIELDS of Study

The MA program offers two fields of study for students with different backgrounds and goals. One field gives our students the competences and skills for a PhD and an academic career. The other is unique for its less traditional approach focusing on field archaeology, cultural heritage management, and other non-academic career paths.

- Classics and Archaeology (Greek and Latin required)
- Classical Studies and Archaeology (no Greek or Latin requirements)

We encourage you to identify an area of research interest and contact a potential supervisor before applying.

Visit the [Classics and Archaeology Department website](#) to read faculty profiles and learn more about faculty members' research areas. When you find a faculty member with similar research interests to yours, contact them and tell them about your interest in graduate work and related experience. This is also an opportunity for you to find out if the faculty member is accepting new graduate students to supervise.

GRAD MAP FOR MA STUDENTS →

Program STRUCTURE

The 2-year Classics and Archaeology MA program is offered in 2 patterns:

- **Pattern I (Thesis):** CLAS 800 and CLAS 802, plus 4 half courses, Thesis and Defence.
- **Pattern II (Major research paper or Project):** CLAS 800, CLAS 802, plus 6 half courses, and major research essay or project.

For both patterns there is also a research language requirement to be completed before finishing the program. Students in the Classics and Archaeology field shall demonstrate the ability to read and comprehend one of the languages of modern scholarship beyond English (e.g. by completing a year-long introductory course). Students in the Classical Studies and Archaeology field shall demonstrate either the ability to read and comprehend one of the languages of modern scholarship beyond English or an ancient language (e.g. by completing two years of introductory Greek or Latin).



**GRADUATE STUDIES AND
POSTDOCTORAL AFFAIRS**

Classics and Archaeology MA Map

MASTER OF ARTS (MA)



How to use this map

Use the 5 rows of the map to explore possibilities and plan for success in the five overlapping areas of career and academics. The map just offers suggestions – you don't have to do it all! To make your own custom map, use the [My Grad Map](#) tool.

Graduate Studies FAQs

How do I make the most of my time at Queen's?

Use the Grad Map to plan for success in five overlapping areas of your career and academic life. Everyone's journey is different - the ideas on the maps are just suggestions to help you explore possibilities. For more support with your professional development, take advantage of the SGSPA professional development framework and the new [Individual Development Plan \(IDP\)](#) process to set customized goals to help you get career ready when you graduate.

Where can I get help?

Queen's provides you with a broad range of support services from your first point of contact with the university through to graduation. Ranging from help with academics and careers, to physical, emotional, or spiritual resources – our welcoming environment offers the programs and services you need to be successful, both academically and personally. Check out the [SGSPA website](#) for available resources.

What is the community like?

At Queen's, graduate students from all disciplines learn and discover in a close-knit intellectual community. You will find friends, peers and support among the graduate students enrolled in Queen's more than 130 graduate programs within 50+ departments & research centres. With the world's best scholars, prize-winning professional development opportunities, excellent funding packages and life in the affordable, historic waterfront city of Kingston, Queen's offers a wonderful environment for graduate studies. Queen's is an integral part of the Kingston community, with the campus nestled in the core of the city, only a 10-minute walk to downtown with its shopping, dining and waterfront. For more about Kingston's history and culture, see Queen's University's [Discover Kingston](#) page.

Application FAQs

What do I need to know to APPLY?

ACADEMIC REQUIREMENTS

- 4-year bachelor degree in Classics and Archaeology or other relevant fields.
- **Grade requirements:** minimum first class or high second class standing (B+/A-average).

ADDITIONAL REQUIREMENTS

- A good knowledge of ancient Greek and Latin is required for the Classics and Archaeology field. There are no language requirements for admission to the Classical Studies and Archaeology field.
- A 5-10 page writing sample to be emailed to the Classics and Archaeology Graduate Program as a PDF.
- In the application you will be required to provide contact information for two referees. Referees will not be contacted until your application is submitted.
- If English is not a native language, prospective students must meet the [English Language proficiency requirements](#) in writing, speaking, reading, and listening.

KEY DATES & DEADLINES

- **Application due:** February 15th to qualify for September admissions. Late submissions will be considered when possible.
- **Notification of acceptance:** Mid to late March.

Before you start your application, please review the [Graduate studies application process](#).

What about FUNDING?

Students enrolled in the Classics and Archaeology MA program receive a funding package of at least \$14,000 for each of the two years of study. Additional funding is available based on academic excellence. Your individual funding package will be described in the letter of offer.

Apply for external funding from OGS, SSHRC, and other sources. Queen's will automatically issue a one time \$5,000 award to incoming Masters students who have won federal government tri-council awards. For more information, see the School of Graduate Studies and Postdoctoral Affairs' information on [awards and scholarships](#).



Queen's
UNIVERSITY

DEPARTMENT OF
CLASSICS

Judy Vanhooser, Administrative Assistant
(613) 533-6000 ext. 78690
jv1@queensu.ca
queensu.ca/classics