

Education MEd Map

Applying to and Navigating Graduate Studies

GRAD MAP FOR MEd STUDENTS 

Why GRADUATE STUDIES in EDUCATION?

Our graduate programs are designed to develop and support innovative research in education. Our Master of Education (MEd) program will advance your knowledge and career in the field of education. By working with our outstanding researchers and experts, you will develop critical reflection, innovative research, writing, teaching, and leadership skills. Our MEd program gives you the flexibility to choose your research focus. We offer a diverse range of courses and program formats. We will support you in designing a program that achieves your learning and research goals.

Why QUEEN'S?

Queen's University has an active and vibrant graduate student community. Our Faculty of Education brings together diverse perspectives on education, fostering multidisciplinary expertise within an active collaborative research community. Our research leads to new knowledge and understandings about teaching and learning, and progressive changes in educational policies and practices. As a researcher at Queen's, you will have opportunities to engage in outreach initiatives in the community and in local, national, and international partnerships.



We leverage expertise, collaborations, and partnerships across the Queen's research community and the educational profession.

Visit the [Faculty of Education website](#) to learn more about the Master of Education program.

Program STRUCTURE

We offer two program paths:

- 6 courses plus a research thesis
- 8 courses plus a research project

RESEARCH Areas

- Assessment and Evaluation
- Curriculum Studies
- Early Childhood Education
- History and Philosophy of Education
- Language and Literacy
- Leadership and Policy Studies
- Learning Exceptionalities
- Math, Science and Technology in Education
- Social Justice and Inclusion
- Special Education

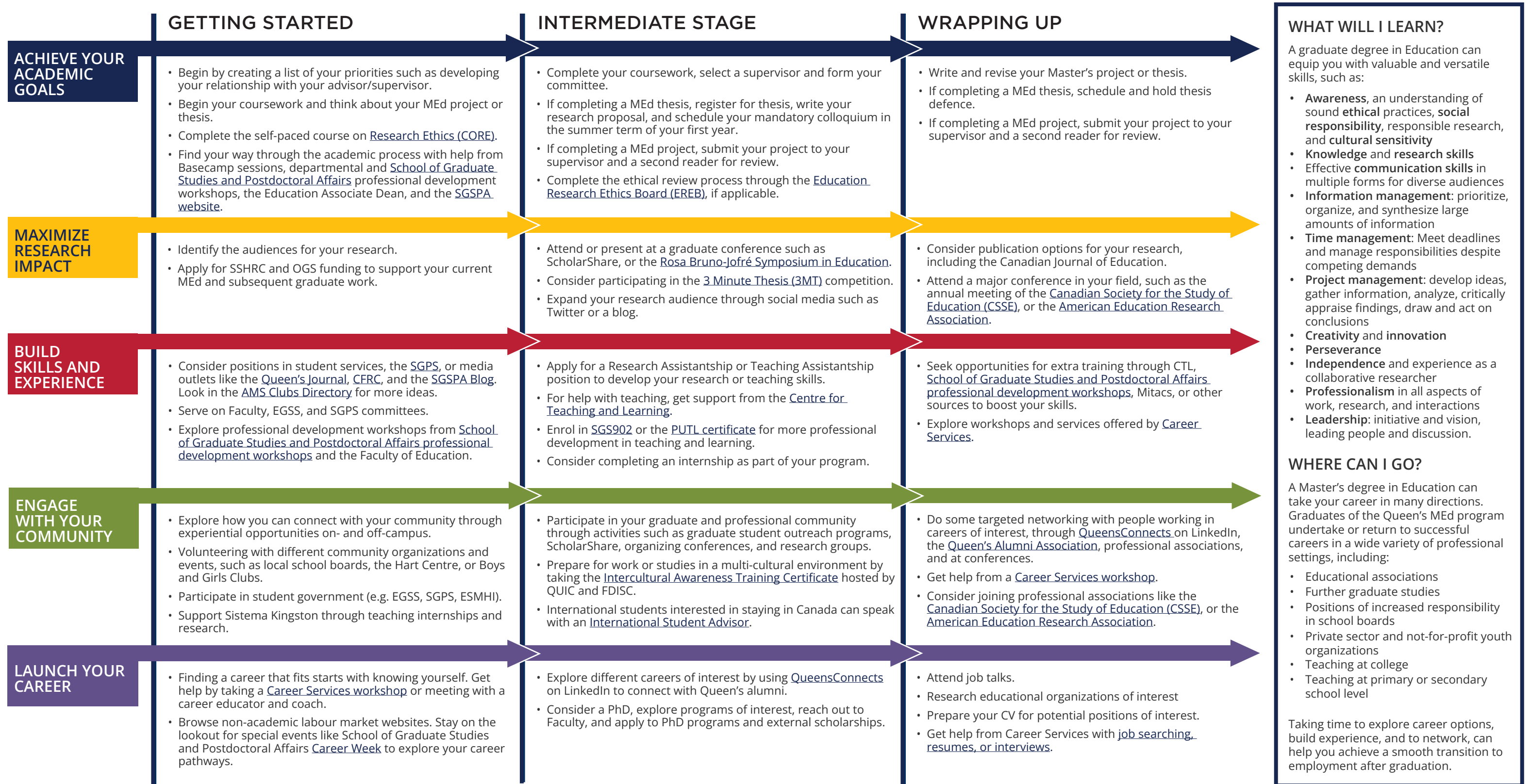


GRADUATE STUDIES AND
POSTDOCTORAL AFFAIRS

2023-2024

Education MEd Map

MASTER OF EDUCATION (MEd)



How to use this map

Use the 5 rows of the map to explore possibilities and plan for success in the five overlapping areas of career and academics. The map just offers suggestions – you don't have to do it all! To make your own custom map, use the [My Grad Map](#) tool.

Graduate Studies FAQs

How do I make the most of my time at Queen's?

Use the Grad Map to plan for success in five overlapping areas of your career and academic life. Everyone's journey is different - the ideas on the maps are just suggestions to help you explore possibilities. For more support with your professional development, take advantage of the SGSPA professional development framework and the new [Individual Development Plan \(IDP\)](#) process to set customized goals to help you get career ready when you graduate.

Where can I get help?

Queen's provides you with a broad range of support services from your first point of contact with the university, through to graduation. Ranging from help with academics and careers, to physical, emotional, or spiritual resources, our welcoming environment offers the programs and services you need to be successful, both academically and personally. Check out the [SGSPA website](#) for available resources.

What is the community like?

At Queen's, graduate students from all disciplines learn and discover in a close-knit intellectual community. With over 130 graduate programs throughout more than 50 departments and research centres, you will find friends, peers and support among our graduate students. With the world's best scholars, prize-winning professional development opportunities, excellent funding packages and life in the affordable, historic waterfront city of Kingston, Queen's offers a wonderful environment for graduate studies. Queen's is an integral part of the Kingston community, with the campus nestled in the core of the city, only a 10-minute walk to downtown with its shopping, dining and waterfront. For more about Kingston's history and culture, see Queen's University's [Discover Kingston](#) page.

Application FAQs

What do I need to know to APPLY?

APPLICATION REQUIREMENTS

- Professional experience, a BEd degree or its equivalent, and a minimum of a B- average in a Bachelor's degree or its equivalent, or
- Two years professional or industrial experience, and a minimum of a B- average in a Bachelor's Honours degree or its equivalent, or
- BEd degree, and a minimum of a mid-B average in a Bachelor's degree or its equivalent
- A proposed focus of study

ADDITIONAL REQUIREMENTS

- If English is not a native language, prospective students must meet the [English language proficiency requirements](#) in writing, speaking, reading, and listening. The following minimum scores are required: (1) TOEFL iBT: Writing (24/30); Speaking (22/30); Reading (22/30); Listening (20/30). Applicants must have the minimum score in each test as well as the minimum overall score, or (2) IELTS: 7.0 (academic module overall band score and a 7.0 for each test band), or (3) PTE Academics: 65, or (4) CAEL CE -70 (minimum overall score).

KEY DATES & DEADLINES

- Application due: January 15th
- Notification of acceptance: Late February

Before you start your application, please review the [School of Graduate Studies and Postdoctoral Affairs application process](#).

What about FUNDING?

All eligible full-time graduate students who request funding (financial support) as part of their initial application can expect to receive a funding offer to help them with the costs associated with their graduate studies in the Faculty of Education.

Funding packages are awarded to students based on academic merit and they may consist of any or a combination of the following: scholarships, fellowships, external awards the student may bring with them, internal awards, research assistantships, or teaching assistantships. The Faculty also offers funding for presenting at conferences.

Apply for external funding from OGS, SSHRC/NSERC, and other sources. Queen's will automatically issue a one time \$5,000 top-up to Master's winners of federal government tri-council awards. For more information, see the School of Graduate Studies and Postdoctoral Affairs' information on [awards and scholarships](#) and the Faculty of Education's [funding information](#).

