

English Language & Literature MPhil Map

Applying to and Navigating Graduate Studies

GRAD MAP FOR MPhil STUDENTS →

Why GRADUATE STUDIES in ENGLISH?

The English Department at Queen's University is a professionally-oriented research department whose faculty members are distinguished by both scholarly prowess and teaching excellence. The Master of Philosophy program is unique among Ontario Universities and features intensive field-specific study, broad coursework, a Publishing Practicum, and guaranteed entry into the Queen's English Doctoral Program upon successful completion of MPhil degree requirements. This program will be of particular interest to undergraduate students considering doctoral research.



Why QUEEN'S?

The graduate programs in English at Queen's are among the oldest and most prestigious in the country, combining commitment to historical breadth with promotion of methodological and disciplinary innovation. The department's vibrant intellectual community is developed and sustained by the synergies between the knowledge and passion of our distinguished faculty and the ideas and inspirations of our outstanding graduate students.



Our Master's students consistently demonstrate high rates of success in national awards competitions, in achieving entry into doctoral programs, and in securing employment in fields as varied as editing, publishing, teaching, law, civil service, business, NGO work, and information technologies.

Fields of STUDY

- American Literature
- Canadian Literature
- Gender Studies
- Indigenous Studies
- Literary Theory
- Medieval Literature
- Modernist Literature
- Modern Popular Culture
- Postcolonial Studies
- Renaissance Literature
- Restoration & 18th-Century Literature
- Romantic Literature
- Victorian Literature

MPhil students choosing to move directly into the workforce upon graduation will have attained field-specific expertise, advanced professionalization, and evidence of research and writing skills through the Publishing Practicum. MPhil students choosing to move on into doctoral studies will accelerate their dissertation work by three full terms.

"The faculty are both accomplished and approachable at the same time."

– Robyn Carruthers, PhD

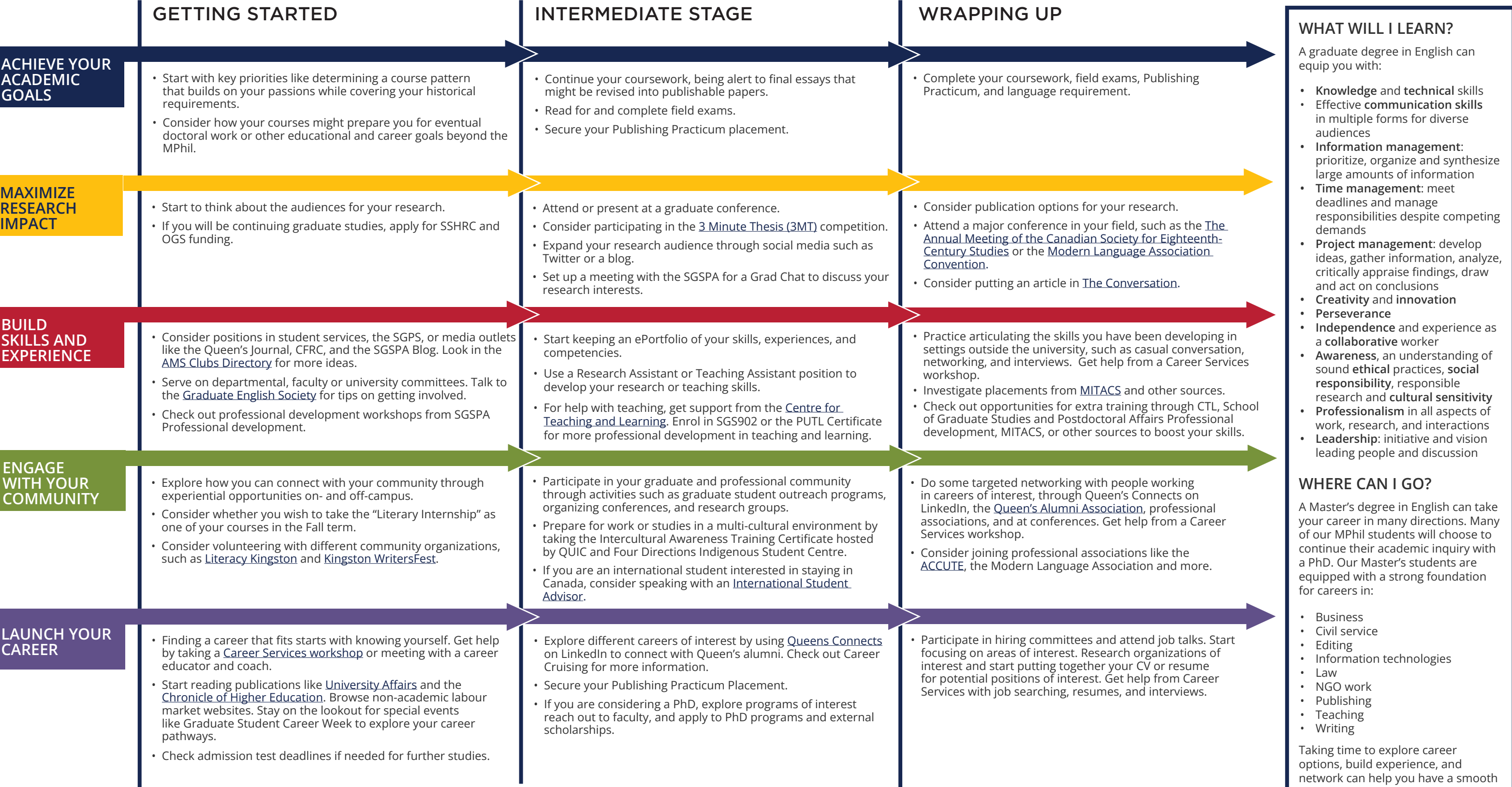
Program STRUCTURE

The MPhil is a 24-month program that features coursework, field exams, and a Publishing Practicum. MPhil students pursuing Doctoral studies will receive advanced standing into the PhD program.



English MPhil Map

MASTER OF PHILOSOPHY (MPhil)



WHAT WILL I LEARN?

- A graduate degree in English can equip you with:
- **Knowledge and technical skills**
 - **Effective communication skills** in multiple forms for diverse audiences
 - **Information management:** prioritize, organize and synthesize large amounts of information
 - **Time management:** meet deadlines and manage responsibilities despite competing demands
 - **Project management:** develop ideas, gather information, analyze, critically appraise findings, draw and act on conclusions
 - **Creativity and innovation**
 - **Perseverance**
 - **Independence** and experience as a **collaborative** worker
 - **Awareness**, an understanding of sound **ethical** practices, **social responsibility**, responsible research and **cultural sensitivity**
 - **Professionalism** in all aspects of work, research, and interactions
 - **Leadership:** initiative and vision leading people and discussion

WHERE CAN I GO?

- A Master's degree in English can take your career in many directions. Many of our MPhil students will choose to continue their academic inquiry with a PhD. Our Master's students are equipped with a strong foundation for careers in:
- Business
 - Civil service
 - Editing
 - Information technologies
 - Law
 - NGO work
 - Publishing
 - Teaching
 - Writing

Taking time to explore career options, build experience, and network can help you have a smooth transition to the world of work after graduation.

How to use this map
Use the 5 rows of the map to explore possibilities and plan for success in the five overlapping areas of career and academics. The map just offers suggestions – you don't have to do it all! To make your own custom map, use the [My Grad Map](#) tool.

Graduate Studies FAQs

How do I make the most of my time at Queen's?

Use the Grad Map to plan for success in five overlapping areas of your career and academic life. Everyone's journey is different - the ideas on the maps are just suggestions to help you explore possibilities. For more support with your professional development, take advantage of the SGSPA professional development framework and the new [Individual Development Plan \(IDP\)](#) process to set customized goals to help you get career ready when you graduate.

Where can I get help?

Queen's provides you with a broad range of support services from your first point of contact with the university through to graduation. Ranging from help with academics and careers, to physical, emotional, or spiritual resources – our welcoming environment offers the programs and services you need to be successful, both academically and personally. Check out the [SGSPA website](#) for available resources.

What is the community like?

At Queen's, graduate students from all disciplines learn and discover in a close-knit intellectual community. You will find friends, peers and support among the graduate students enrolled in Queen's more than 130 graduate programs within 50+ departments & research centres. With the world's best scholars, prize-winning professional development opportunities, excellent funding packages and life in the affordable, historic waterfront city of Kingston, Queen's offers a wonderful environment for graduate studies. Queen's is an integral part of the Kingston community, with the campus nestled in the core of the city, only a 10-minute walk to downtown with its shopping, dining and waterfront. For more about Kingston's history and culture, see Queen's University's [Discover Kingston](#) page.

Application FAQs

What do I need to know to APPLY?

ACADEMIC REQUIREMENTS

- Honours Bachelor of Arts degree.
- **Grade requirements:** minimum average of A- (3.7/4.3 GPA) and a cumulative minimum average of A- (3.7/4.3 GPA) in 10 full-year English Literature courses (or equivalent).
- Applicants are expected to have taken courses in most major areas of English literature from the medieval period to the present, and in literary theory.

ADDITIONAL REQUIREMENTS

- Two official transcripts from each post-secondary institution attended.
- Two letters of recommendation.
- Statement of interest: Outline of research interests and goals
- Writing sample: 8 pages max (including bibliography).
- If English is not a native language, prospective students must meet English language proficiency requirements in writing, speaking, reading, and listening. The minimum score requirements for the MPhil program are: (1) TOEFL paper-based: 627, computer-based: 263, internet-based: 109, (2) TOEFL Test of Written English paper or computer-based: 6.0, internet-based: 30, and an (3) IELTS score of 7.5. These tests must have been taken within a year of the date of pre-application.

KEY DATES & DEADLINES

- Application due: January 15 for all documentation and application.
- Notification of acceptance: March and April.

Before you start your application, please review the [Graduate studies application process](#).

What about FUNDING?

Students are usually funded through a combination of internal fellowships, teaching assistantships, bursaries, and scholarships as part of the basic funding package.

Apply for external funding from OGS, SSHRC, and other sources. Queen's will automatically issue a one time \$5,000 award to incoming Masters students who have won federal government tri-council awards. For more information, see the School of Graduate Studies and Postdoctoral Affairs' information on [awards and scholarships](#).



Lovorka Fabek-Fischer, Graduate Assistant
(613) 533-2153
lf34@queensu.ca
queensu.ca/english