

English MA Map

Applying to and Navigating Graduate Studies

GRAD MAP FOR MA STUDENTS →

Why GRADUATE STUDIES in ENGLISH?

The English Department at Queen's University is a professionally-oriented research department whose faculty members are distinguished by both scholarly prowess and teaching excellence. Students in the MA, MPhil, and the PhD programs take courses that involve a wide range of critical methodologies, historical periods, and literary genres; they also take a pedagogical and professional skills course that ranges from academic counseling to grant applications to mentoring undergraduate students.

Why QUEEN'S?

The Master's and Doctoral programs in English at Queen's are among the oldest and most prestigious in the country, combining commitment to historical breadth with promotion of methodological and disciplinary innovation. The department's vibrant intellectual community is developed and sustained by the synergies between the knowledge and passion of our distinguished faculty and the ideas and inspirations of our outstanding graduate students.

Our Master's students consistently demonstrate high rates of success in national awards competitions, in achieving entry into doctoral programs, and in



securing employment in fields as varied as editing, publishing, teaching, law, civil service, business, NGO work, and information technologies.

Fields of STUDY

- American Literature
- Canadian Literature
- Gender Studies
- Indigenous Studies
- Literary Theory
- Medieval Literature
- Modernist Literature
- Modern Popular Culture
- Postcolonial Studies
- Renaissance Literature
- Restoration & 18th-Century Literature
- Romantic Literature
- Victorian Literature

We encourage you to identify an area of research interest and contact a potential supervisor before applying, should you be interested in the MA thesis option.

Visit the [English Department website](#) to read [faculty profiles](#) and learn more about faculty members' research areas. When you find a faculty member with similar research interests to yours, contact them and tell them about your interest in graduate work and related experience.

"I have been at Queen's for both my MA & PhD, and I can say it's an outstanding program. The library collections are among the best in the country. The size of the program is ideal [...] and, probably most importantly, the faculty are both accomplished and approachable at the same time."

– Robyn Carruthers, PhD

Program STRUCTURE

The 12-month Master of English is offered in 2 patterns:

- Pattern I: Course work.
(Recommended standard for an MA in English.)
- Pattern II: Course work and thesis of approximately 15,000 words.

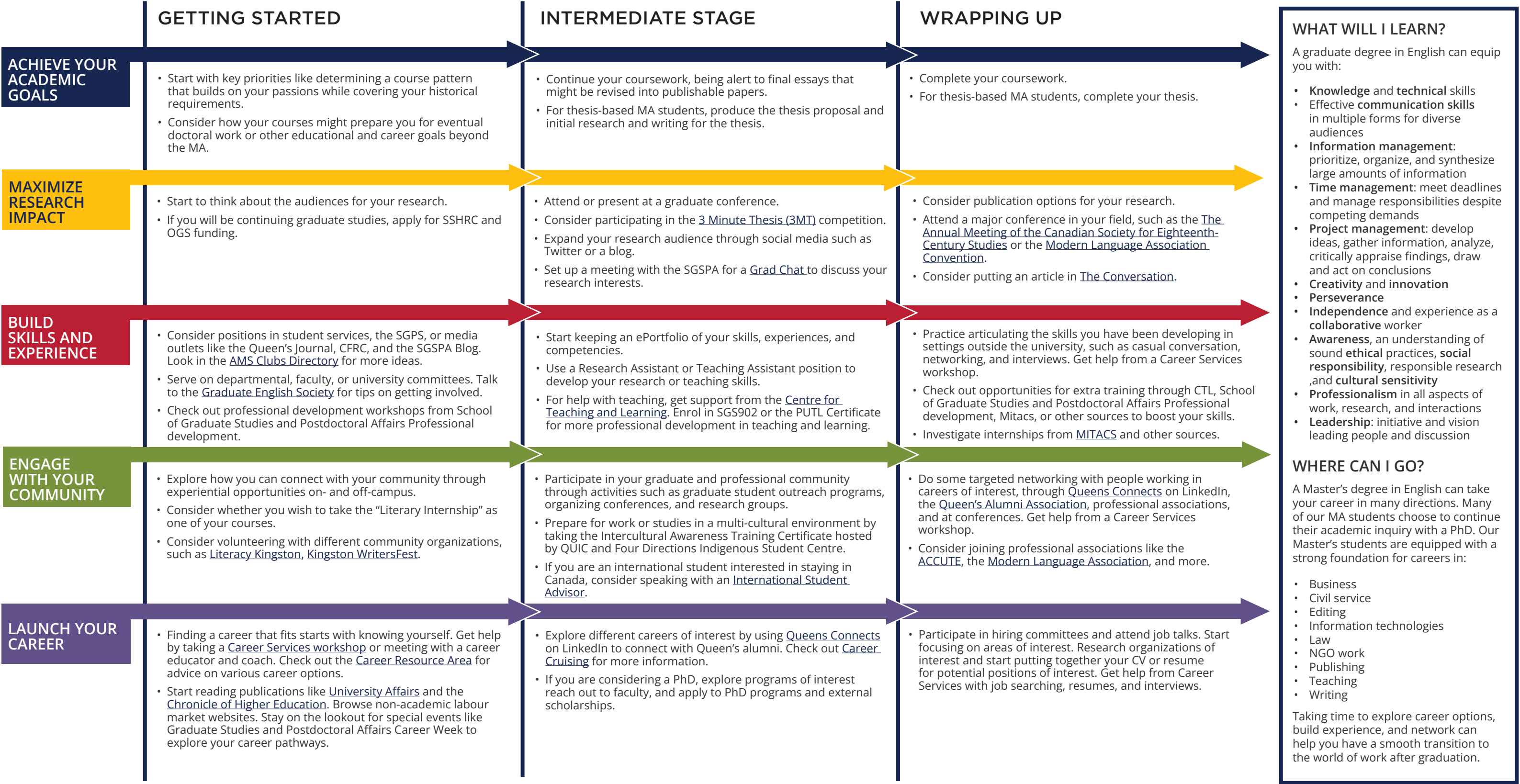


Queen's
UNIVERSITY

GRADUATE STUDIES AND
POSTDOCTORAL AFFAIRS

English MA Map

MASTER OF ARTS (MA)



How to use this map

Use the 5 rows of the map to explore possibilities and plan for success in the five overlapping areas of career and academics. The map just offers suggestions – you don't have to do it all! To make your own custom map, use the [My Grad Map](#) tool.

Graduate Studies FAQs

How do I make the most of my time at Queen's?

Use the Grad Map to plan for success in five overlapping areas of your career and academic life. Everyone's journey is different - the ideas on the maps are just suggestions to help you explore possibilities. For more support with your professional development, take advantage of the SGSPA professional development framework and the new [Individual Development Plan \(IDP\)](#) process to set customized goals to help you get career ready when you graduate.

Where can I get help?

Queen's provides you with a broad range of support services from your first point of contact with the university through to graduation. Ranging from help with academics and careers, to physical, emotional, or spiritual resources - our welcoming environment offers the programs and services you need to be successful, both academically and personally. Check out the [SGSPA website](#) for available resources.

What is the community like?

At Queen's, graduate students from all disciplines learn and discover in a close-knit intellectual community. You will find friends, peers and support among the graduate students enrolled in Queen's more than 130 graduate programs within 50+ departments & research centres. With the world's best scholars, prize-winning professional development opportunities, excellent funding packages and life in the affordable, historic waterfront city of Kingston, Queen's offers a wonderful environment for graduate studies. Queen's is an integral part of the Kingston community, with the campus nestled in the core of the city, only a 10-minute walk to downtown with its shopping, dining and waterfront. For more about Kingston's history and culture, see Queen's University's [Discover Kingston](#) page.

Application FAQs

What do I need to know to APPLY?

ACADEMIC REQUIREMENTS

- Honours Bachelor of Arts degree.
- **Grade requirements:** minimum average of B+ over all 4 years of undergraduate study, with a cumulative minimum average of A- in 10 full-year English Literature courses (or equivalent).

ADDITIONAL REQUIREMENTS

- Statement of Interest
- If English is not a native language, prospective students must meet the [English language proficiency requirements](#) in writing, speaking, reading, and listening. The following minimum scores are required: TOEFL (paper-based): 550, (2) TOEFL iBT: Writing (24/30); Speaking (22/30); Reading (22/30); Listening (20/30), for a total of 88/120 (applicants must have the minimum score in each test as well as the minimum overall score), or (3) IELTS: 7.5 (academic module overall band score). These tests must have been taken within a year of the date of pre-application.

KEY DATES & DEADLINES

- **Application due:** January 15 for all documentation and application.
- **Notification of acceptance:** March and April.

Before you start your application, please review the [Graduate studies application process](#).

What about FUNDING?

Students are usually funded through a combination of internal fellowships, teaching assistantships, bursaries, and scholarships as part of the basic funding package.

Apply for external funding from OGS, SSHRC, and other sources. Queen's will automatically issue a one time \$5,000 award to incoming Masters students who have won federal government tri-council awards. For more information, see the School of Graduate Studies and Postdoctoral Affairs' information on [awards and scholarships](#).



Lovorka Fabek-Fischer, Graduate Assistant
(613) 533-2153
lf34@queensu.ca
queensu.ca/english