

Environmental Studies MES Map

Applying to and Navigating Graduate Studies

GRAD MAP FOR MES STUDENTS →

Why GRADUATE STUDIES in ENVIRONMENTAL STUDIES?

The Earth's environment is under stress, and the search for solutions is anything but simple. It requires an interdisciplinary approach to problem-solving and education. Our program emphasizes the diverse contributions of the natural sciences, humanities, and social sciences to understanding and solving environmental problems.

The MES program meets a growing student demand for post-graduate training relevant to environmental careers in industry, government, and non-governmental organizations. It responds to a strong market in Canada for professionals with environmentally related skills.

Why QUEEN'S?

The MES program at Queen's University provides graduate level training in the field of Environmental Sustainability by practicing an interdisciplinary approach to the study of the long-term dynamics, impacts, and management of environmental change, the connections between today's decisions and tomorrow's wellbeing, and the strong dependence of human progress on environmental quality. This program provides opportunities for joint projects with many disciplines at Queen's and RMC, government agencies, and partnerships with community organizations.

Program STRUCTURE

The MES is offered with two methods of completion:

- **Method I** (Research – 2 years): four half-credit courses, original research, thesis, seminars, formal defense.
- **Method II** (Course based – 16 to 20 months): development of conceptual thinking, analytical & interpretive skills. Six half-credit courses, seminars, library-based interdisciplinary paper.



RESEARCH Areas

- **Environmental Chemistry & Toxicology:** Analysis of chemicals, their pathways and fates in the environment, their effects on plants, animals, and humans, and remediation options.
- **Ecosystem & Human Health:** Application of a systems approach to understanding the impact of human activities on climate change, biodiversity, ecosystem functions, and human health.
- **Society, Culture & Economic Sustainability:** Finding solutions to environmental problems and sustainable living involving the investigation of cultural, social and economic systems.
- **Past projects have involved:** land-use planning, governance, social justice, Indigenous studies, activism, and environmental philosophy.

Visit the [School of Environmental Studies website](#) to read faculty profiles and learn more about faculty members' research areas. When you find a faculty member with similar research interests to yours, contact them and tell them about your interest in graduate work and related experience.

"The academic environment is excellent. The faculty is supportive, and the students are really friendly."

– Atanu Sarkar, MES



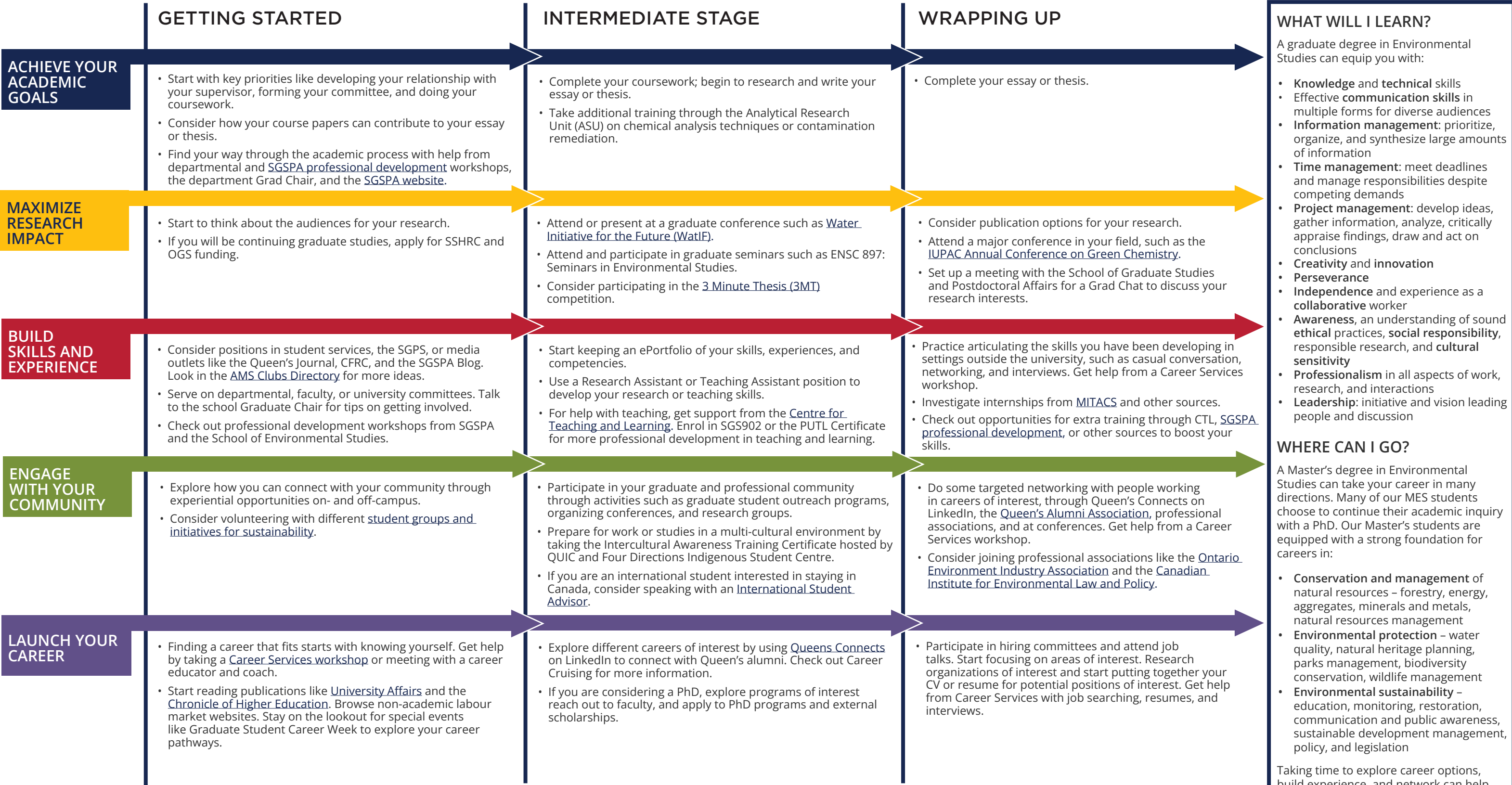
Consider meeting with your potential supervisor at departmental events for prospective students. We encourage you to identify a research area of interest and contact a potential supervisor before applying.



GRADUATE STUDIES AND
POSTDOCTORAL AFFAIRS

Environmental Studies

MASTER OF ENVIRONMENTAL STUDIES (MES)



WHAT WILL I LEARN?

A graduate degree in Environmental Studies can equip you with:

- Knowledge and technical skills**
- Effective communication skills** in multiple forms for diverse audiences
- Information management:** prioritize, organize, and synthesize large amounts of information
- Time management:** meet deadlines and manage responsibilities despite competing demands
- Project management:** develop ideas, gather information, analyze, critically appraise findings, draw and act on conclusions
- Creativity and innovation**
- Perseverance**
- Independence** and experience as a collaborative worker
- Awareness**, an understanding of sound ethical practices, **social responsibility**, responsible research, and **cultural sensitivity**
- Professionalism** in all aspects of work, research, and interactions
- Leadership:** initiative and vision leading people and discussion

WHERE CAN I GO?

A Master's degree in Environmental Studies can take your career in many directions. Many of our MES students choose to continue their academic inquiry with a PhD. Our Master's students are equipped with a strong foundation for careers in:

- Conservation and management** of natural resources – forestry, energy, aggregates, minerals and metals, natural resources management
- Environmental protection** – water quality, natural heritage planning, parks management, biodiversity conservation, wildlife management
- Environmental sustainability** – education, monitoring, restoration, communication and public awareness, sustainable development management, policy, and legislation

Taking time to explore career options, build experience, and network can help you have a smooth transition to the world of work after graduation.

How to use this map

Use the 5 rows of the map to explore possibilities and plan for success in the five overlapping areas of career and academics. The map just offers suggestions – you don't have to do it all! To make your own custom map, use the [My Grad Map](#) tool.

Graduate Studies FAQs

How do I make the most of my time at Queen's?

Use the Grad Map to plan for success in five overlapping areas of your career and academic life. Everyone's journey is different - the ideas on the maps are just suggestions to help you explore possibilities. For more support with your professional development, take advantage of the SGSPA professional development framework and the new [Individual Development Plan \(IDP\)](#) process to set customized goals to help you get career ready when you graduate.

Where can I get help?

Queen's provides you with a broad range of support services from your first point of contact with the university through to graduation. Ranging from help with academics and careers, to physical, emotional, or spiritual resources – our welcoming environment offers the programs and services you need to be successful, both academically and personally. Check out the [SGSPA website](#) for available resources.

What is the community like?

At Queen's, graduate students from all disciplines learn and discover in a close-knit intellectual community. You will find friends, peers and support among the graduate students enrolled in Queen's more than 130 graduate programs within 50+ departments & research centres. With the world's best scholars, prize-winning professional development opportunities, excellent funding packages and life in the affordable, historic waterfront city of Kingston, Queen's offers a wonderful environment for graduate studies. Queen's is an integral part of the Kingston community, with the campus nestled in the core of the city, only a 10-minute walk to downtown with its shopping, dining and waterfront. For more about Kingston's history and culture, see Queen's University's [Discover Kingston](#) page.

Application FAQs

What do I need to know to APPLY?

ACADEMIC REQUIREMENTS

- 4 year Honours undergraduate degree (or the equivalent). The program is suited to students with a wide range of educational backgrounds, including Environmental Studies, History, Geography, Biology, Chemistry, Life Sciences, Engineering, Law, Philosophy, and Art.
- **Grade requirements:** minimum cumulative GPA of B+.

ADDITIONAL REQUIREMENTS

- If English is not a native language, prospective students must meet the English language proficiency requirements in writing, speaking, reading, and listening. The following minimum scores are required: (1) TOEFL iBT: Writing (24/30); Speaking (22/30); Reading (22/30); Listening (20/30). Applicants must have the minimum score in each test as well as the minimum overall score, or (2) IELTS: 7.0 (academic module overall band score and a 7.0 for each test band), or (3) PTE Academics: 65, or (4) CAEL CE -70 (minimum overall score).

KEY DATES & DEADLINES

- **Application due:** February 1st.
- **Notification of acceptance:** As soon as possible after receiving the full application.

Before you start your application, please review the [Graduate studies application process](#).

What about FUNDING?

MES students receive minimum funding of \$16,000 per year for the two years of the program. This basic level of funding is pro-rated based on the duration of study. Your overall financial support will consist of graduate awards, external scholarships, internal fellowships and bursaries, teaching and research assistantships, research grants, and/or support from the School of Environmental Studies.

Apply for external funding from OGS, SSHRC, and other sources. For more information, see the School of Graduate Studies and Postdoctoral Affairs' information on [awards and scholarships](#).

