

Epidemiology MSc Map

Applying to and Navigating Graduate Studies

GRAD MAP FOR MSc STUDENTS 

Why GRADUATE STUDIES in EPIDEMIOLOGY?

Graduate students and their work are an important part of the ongoing research process that provides the community with ways of understanding health problems that occur at a local, regional, national, and even global level. Students gain skills to communicate scientifically, describe trends and patterns of disease incidence and prevalence, critically review scientific literature related to community health and epidemiology, collect and analyze data, and more.

The goal of the Master's in Epidemiology program is to provide a common methodological foundation from which to conduct research in human populations across diverse health-related areas. The scope of the field of epidemiology is broad; it includes a range of content areas and methodologies. Depending upon their focus, students learn about various research designs, biostatistics, program evaluation, health economics, as well as how to design surveys or use administrative data.



"Combined with the intimate and supportive environment cultivated by the faculty, the Queen's Epidemiology program is an outstanding choice for your graduate career!"
- Atif Kukaswadia, PhD

Research AREAS

Examples of research areas include, but are not limited to:

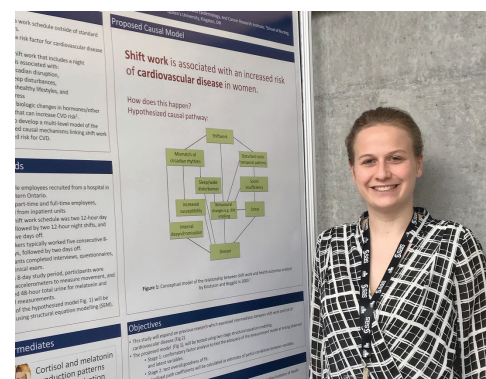
- Cancer Etiology and Control
- Epidemiology and Population Health
- Health Services Research
- Injury Epidemiology
- Mental Health Epidemiology



We also have some emerging strengths in the areas of Northern health, Indigenous health, and global health studies.

Program STRUCTURE

MSc (2 years): Course work (4 core courses, 2 electives) and a thesis. Part-time studies are an available option.



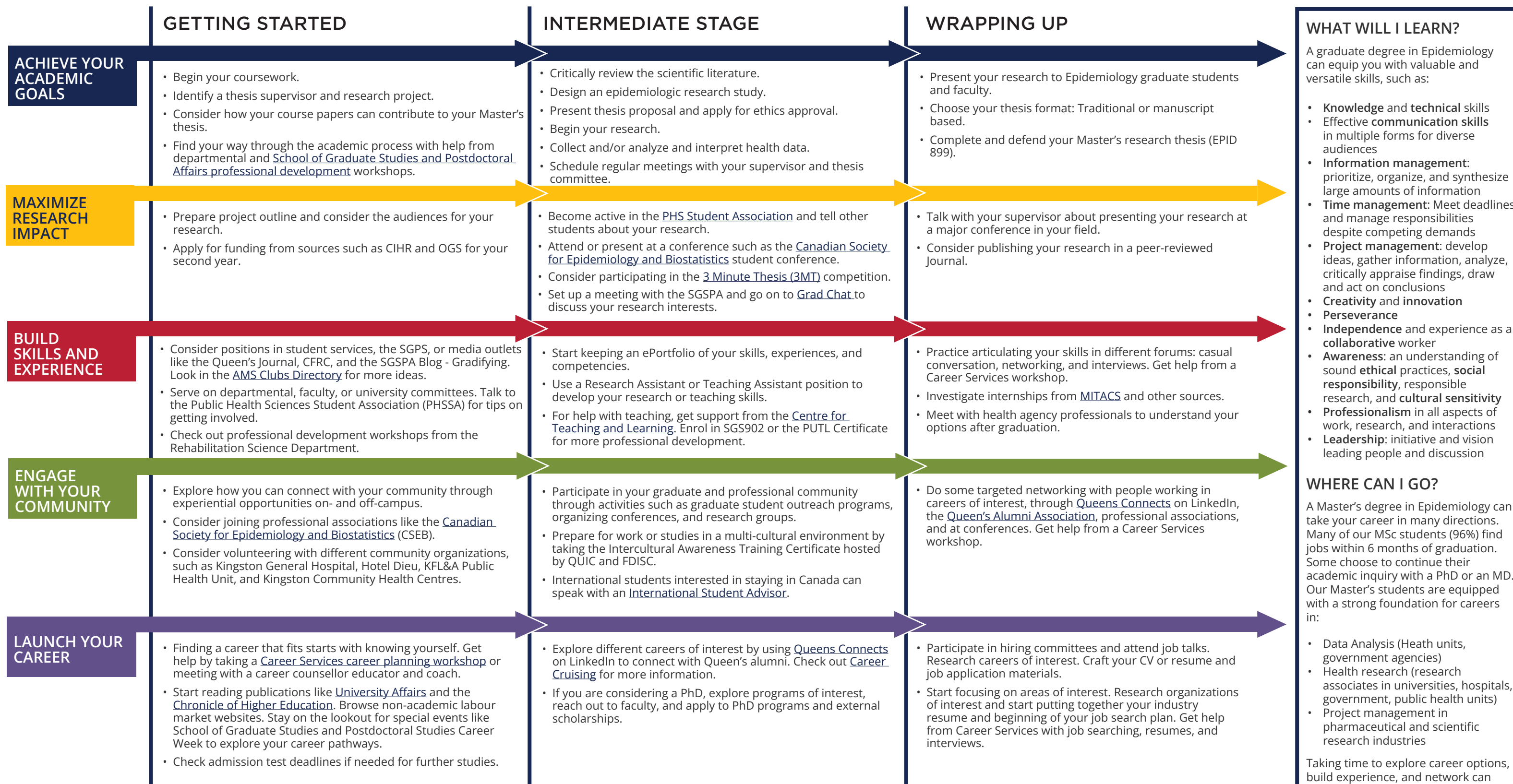
Why QUEEN'S?

At Queen's, our established strengths are in the areas of cancer, injury, obesity, disability, and mental health epidemiology as well as research in various health services contexts including public health, primary care, cancer care, and critical care.

Visit the [Epidemiology website](#) to learn about faculty members' research areas. When you find a faculty member with similar research interests to yours, contact them and tell them about your interest in graduate work and related experience.

Epidemiology MSc Map

MASTER OF SCIENCE (MSc)



WHAT WILL I LEARN?

A graduate degree in Epidemiology can equip you with valuable and versatile skills, such as:

- Knowledge and technical skills**
- Effective communication skills** in multiple forms for diverse audiences
- Information management:** prioritize, organize, and synthesize large amounts of information
- Time management:** Meet deadlines and manage responsibilities despite competing demands
- Project management:** develop ideas, gather information, analyze, critically appraise findings, draw and act on conclusions
- Creativity and innovation**
- Perseverance**
- Independence** and experience as a collaborative worker
- Awareness:** an understanding of sound ethical practices, social responsibility, responsible research, and cultural sensitivity
- Professionalism** in all aspects of work, research, and interactions
- Leadership:** initiative and vision leading people and discussion

WHERE CAN I GO?

A Master's degree in Epidemiology can take your career in many directions. Many of our MSc students (96%) find jobs within 6 months of graduation. Some choose to continue their academic inquiry with a PhD or an MD. Our Master's students are equipped with a strong foundation for careers in:

- Data Analysis (Health units, government agencies)
- Health research (research associates in universities, hospitals, government, public health units)
- Project management in pharmaceutical and scientific research industries

Taking time to explore career options, build experience, and network can help you have a smooth transition to the world of work after graduation.

How to use this map

Use the 5 rows of the map to explore possibilities and plan for success in the five overlapping areas of career and academics. The map just offers suggestions – you don't have to do it all! To make your own custom map, use the [My Grad Map](#) tool.

Graduate Studies FAQs

How do I make the most of my time at Queen's?

Use the Grad Map to plan for success in five overlapping areas of your career and academic life. Everyone's journey is different - the ideas on the maps are just suggestions to help you explore possibilities. For more support with your professional development, take advantage of the SGSPA professional development framework and the new [Individual Development Plan \(IDP\)](#) process to set customized goals to help you get career ready when you graduate.

Where can I get help?

Queen's provides you with a broad range of support services from your first point of contact with the university through to graduation. Ranging from help with academics and careers, to physical, emotional, or spiritual resources - our welcoming environment offers the programs and services you need to be successful, both academically and personally. Check out the [SGSPA website](#) for available resources.

What is the community like?

At Queen's, graduate students from all disciplines learn and discover in a close-knit intellectual community. You will find friends, peers and support among the graduate students enrolled in Queen's more than 130 graduate programs within 50+ departments & research centres. With the world's best scholars, prize-winning professional development opportunities, excellent funding packages and life in the affordable, historic waterfront city of Kingston, Queen's offers a wonderful environment for graduate studies. Queen's is an integral part of the Kingston community, with the campus nestled in the core of the city, only a 10-minute walk to downtown with its shopping, dining and waterfront. For more about Kingston's history and culture, see Queen's University's [Discover Kingston](#) page.

Application FAQs

What do I need to know to APPLY?

ACADEMIC REQUIREMENTS

- 4-year Bachelor's degree.
- MSc applicants must have demonstrated the use of quantitative skills, by successfully completing courses in mathematics, statistics, or data analysis, and by achieving a grade of A- in at least one statistics course.
- **Grade requirements:** An overall average of 75% in undergraduate studies.

ADDITIONAL REQUIREMENTS

- If English is not a native language, prospective students must meet the [English language proficiency requirements](#) in writing, speaking, reading, and listening. The following minimum scores are required: (1) TOEFL iBT: Writing (24/30); Speaking (22/30); Reading (22/30); Listening (20/30). Applicants must have the minimum score in each test as well as the minimum overall score, or (2) IELTS: 7.0 (academic module overall band score and a 7.0 for each test band), or (3) PTE Academics: 65, or (4) CAEL CE -70 (minimum overall score).
- The GRE is a mandatory requirement for applicants with degrees from non-Canadian universities, and a minimum score of 149 is required on the quantitative section.

KEY DATES & DEADLINES

- **Application due:** January 31 to qualify for internal funding.
- Application review begins in mid-February.

Before you start your application, please review the [Graduate studies application process](#).

What about FUNDING?

The Department usually guarantees a minimum funding level and provides individual funding packages for full-time students (years 1 and 2) in the program, based upon the student's academic standing and on the sources of money available each year. These packages are funded through a combination of external awards, internal awards, internal departmental awards, faculty support, teaching assistantships, graduate research assistant fellowships, and research assistantships.

Apply for external funding from CIHR, NSERC, OGS, the Heart & Stroke Foundation, CBCF, the Department of Defence, the Canadian Cancer Society, and other sources. Queen's will automatically issue a one time \$5,000 top-up to students who are granted a federal tri-council award in their first year of study. For more information, see the School of Graduate Studies and Postdoctoral Affairs' information on [awards and scholarships](#) and the department's graduate awards page.



Queen's
UNIVERSITY

EPIDEMIOLOGY

Sue Preston, Graduate Assistant
613-533-2901
epid@queensu.ca
[phs.queensu.ca/graduate-programs/
msc-epidemiology](https://phs.queensu.ca/graduate-programs/msc-epidemiology)