

Gender Studies MA Map

Applying to and Navigating Graduate Studies

GRAD MAP FOR MA STUDENTS →

Why GRADUATE STUDIES in GENDER STUDIES?

Gender Studies opens doors for students to address growing concerns about inequity, equity, and justice across national and global societies. Gender affects everyone, making Gender Studies a space where our theory and our practice attend to the differences and connections among diverse peoples worldwide.

As an interdisciplinary field, Gender Studies helps students connect social science, humanities, arts, and natural science methods to produce innovative new knowledge. Graduates of the MA in Gender Studies at Queen's pursue advanced degrees in American studies, English, environmental studies, gender studies, legal studies, and medicine, and work in such fields as education, health, law, public policy, social research, social work, media, art, and community organizing. Gender Studies prepares students for both academic and nonacademic careers.

Why QUEEN'S?

The one-year Gender Studies MA trains students in critical race, gender, sexuality studies and social justice.

Gender Studies at Queen's distinctively foregrounds critical race conceptual frameworks at all levels of our undergraduate and graduate degree programs. Students examine gender, our key category of analysis, in terms of its interdependence with race, class, nation, sexuality, disability, age, religion, colonialism, and globalization. Students conduct research in Canada and internationally and articulate their scholarship with local and global action for social justice. Students produce scholarship that is directly applicable to work for social change and to a wide variety of academic and nonacademic careers.



Program STRUCTURE

The MA in Gender Studies is a one-year program. Full-time students take seven courses -- two (3.0 credit) required courses, four (3.0 credit) elective courses, and one (0.0 credit) Proseminar course in fall and winter semesters -- and complete a Major Research Paper (50 pages) during spring and summer. The elective courses may be selected from Gender Studies graduate courses (including GNDS 850/3.0, a practicum option), graduate courses in other departments, and independently organized directed readings.

RESEARCH Areas

- Activism and Alliance Building
- Anti-Colonial Thought
- Anti-Racist Feminisms
- Black Geographies
- Colonialisms
- Creative Emancipatory Work
- Critical History
- Diaspora
- Ethnography
- Gender and Poverty
- Globalization, Work and Social Justice
- Health Studies
- Indigenous Studies
- Memory and Trauma

- Popular Culture
- Queer Studies
- Trans Studies
- Transnationalism and Diaspora

We encourage you to identify an area of research interest and contact a potential supervisor before applying.

"The first time I heard about the Gender Studies department at Queen's [...] someone referred to it as 'friendly and supportive'. During my time studying Gender Studies, I discovered the truth of those words on a frequent, if not daily, basis."

– Bilan Hashi, MA

Visit the [Gender Studies Department website](#) to read [faculty profiles](#) and learn more about faculty members' research areas. When you find a faculty member with similar research interests to yours, contact them and tell them about your interest in graduate work, area of research interest, and related experience.

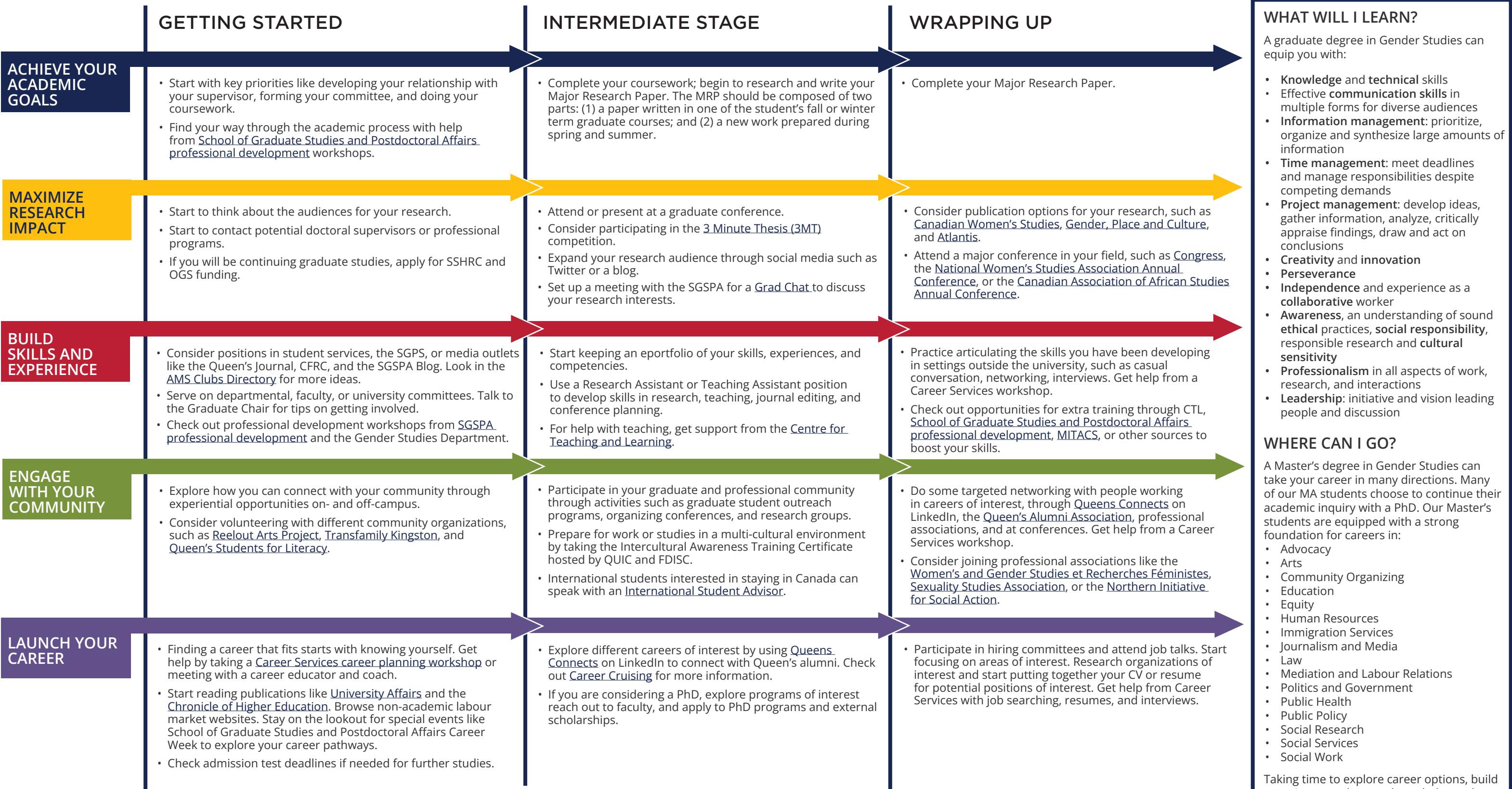


Queen's
UNIVERSITY

GRADUATE STUDIES AND
POSTDOCTORAL AFFAIRS

Gender Studies MA Map

MASTER OF ARTS (MA)



WHAT WILL I LEARN?

A graduate degree in Gender Studies can equip you with:

- Knowledge** and **technical** skills
- Effective **communication skills** in multiple forms for diverse audiences
- Information management**: prioritize, organize and synthesize large amounts of information
- Time management**: meet deadlines and manage responsibilities despite competing demands
- Project management**: develop ideas, gather information, analyze, critically appraise findings, draw and act on conclusions
- Creativity** and **innovation**
- Perseverance**
- Independence** and experience as a **collaborative** worker
- Awareness**, an understanding of sound **ethical** practices, **social responsibility**, responsible research and **cultural sensitivity**
- Professionalism** in all aspects of work, research, and interactions
- Leadership**: initiative and vision leading people and discussion

WHERE CAN I GO?

A Master's degree in Gender Studies can take your career in many directions. Many of our MA students choose to continue their academic inquiry with a PhD. Our Master's students are equipped with a strong foundation for careers in:

- Advocacy
- Arts
- Community Organizing
- Education
- Equity
- Human Resources
- Immigration Services
- Journalism and Media
- Law
- Mediation and Labour Relations
- Politics and Government
- Public Health
- Public Policy
- Social Research
- Social Services
- Social Work

Taking time to explore career options, build experience, and network can help you have a smooth transition to the world of work after graduation.

How to use this map

Use the 5 rows of the map to explore possibilities and plan for success in the five overlapping areas of career and academics. The map just offers suggestions – you don't have to do it all! To make your own custom map, use the [My Grad Map](#) tool.

Graduate Studies FAQs

How do I make the most of my time at Queen's?

Use the Grad Map to plan for success in five overlapping areas of your career and academic life. Everyone's journey is different - the ideas on the maps are just suggestions to help you explore possibilities. For more support with your professional development, take advantage of the SGSPA professional development framework and the new [Individual Development Plan \(IDP\)](#) process to set customized goals to help you get career ready when you graduate.

Where can I get help?

Queen's provides you with a broad range of support services from your first point of contact with the university through to graduation. Ranging from help with academics and careers, to physical, emotional, or spiritual resources – our welcoming environment offers the programs and services you need to be successful, both academically and personally. Check out the [SGSPA website](#) for available resources.

What is the community like?

At Queen's, graduate students from all disciplines learn and discover in a close-knit intellectual community. You will find friends, peers and support among the graduate students enrolled in Queen's more than 130 graduate programs within 50+ departments & research centres. With the world's best scholars, prize-winning professional development opportunities, excellent funding packages and life in the affordable, historic waterfront city of Kingston, Queen's offers a wonderful environment for graduate studies. Queen's is an integral part of the Kingston community, with the campus nestled in the core of the city, only a 10-minute walk to downtown with its shopping, dining and waterfront. For more about Kingston's history and culture, see Queen's University's [Discover Kingston](#) page.



Graduate Program Office
(613) 533-6000 ext. 77980
gndsgrad@queensu.ca
queensu.ca/gnds

Application FAQs

What do I need to know to APPLY?

ACADEMIC REQUIREMENTS

- A four-year undergraduate degree (BAH) from a recognized university in Gender Studies or cognate fields (women's studies, feminist studies, sexuality studies) or in another field with evidence of a prior focus on gender.
- **Grade requirements:** minimum B+ (75%) average in the last 2 years of university study.

ADDITIONAL REQUIREMENTS

- Letters of Recommendation
- Transcripts
- Potential Faculty Supervisor
- Statement of Research Interests
- Current CV
- Writing sample (8-10 pages)
- If English is not a native language, prospective students must meet the [English language proficiency requirements](#) in writing, speaking, reading, and listening. The following minimum scores are required: (1) TOEFL iBT: Writing (24/30); Speaking (22/30); Reading (22/30); Listening (20/30). Applicants must have the minimum score in each test as well as the minimum overall score, or (2) IELTS: 7.0 (academic module overall band score and a 7.0 for each test band), or (3) PTE Academics: 65, or (4) CAEL CE -70 (minimum overall score).

KEY DATES & DEADLINES

- **Application due:** December 1st for early consideration; Final application deadline is February 1st.
- **Notification of acceptance:** Offers of admission will be made following the early consideration deadline and final application deadline.

Before you start your application, please review the [Graduate studies application process](#), and feel free to contact us at gndsgrad@queensu.ca or visit our [website](#).

What about FUNDING?

Full-time MA students are guaranteed funding of \$16,000. Funding package may be delivered in one or more of the following ways: internal awards and fellowships, external funding (if available), Teaching assistantships, and Research assistantships.

Apply for external funding from the Ontario Graduate Scholarship, SSHRC, and other sources. Queen's will automatically issue a one time \$5,000 top-up to Masters winners of federal government Tri-Council awards. For more information, see the School of Graduate Studies and Postdoctoral Affairs' information on [awards and scholarships](#).

