

Healthcare Quality MSc(HQ) Map

Applying to and Navigating Graduate Studies

GRAD MAP FOR MSc(HQ) STUDENTS →

Why GRADUATE STUDIES in HEALTH QUALITY?

This two year, part-time, interdisciplinary course-based program consists of seven (7) core courses and a supervised project leading to a Master of Science in Healthcare Quality (MScHQ) degree that will prepare you for practice, research, and education in the developing area of Health Quality, Risk and Safety. Ensuring patient safety and minimizing risk are crucial concerns of those working in healthcare related fields. The MScHQ provides professionals with the knowledge and tools to research, advocate, and implement strategies for risk reduction and quality improvement within the healthcare system.

Why QUEEN'S?

The Master of Science in Healthcare Quality (MScHQ) at Queen's is the first online program of its kind in Canada, specializing in linking theory and practice in quality, risk, and safety in healthcare. We offer interdisciplinary courses, led by leaders in their fields, convenient distance learning and valuable international exposure. Unparalleled in its scope, the Master of Science in Healthcare Quality is the only program in Canada to address the growing need for interactions across disciplines, professions and communities. Join us on the forefront of improving health quality, risk, and safety in Canada and worldwide.

Program STRUCTURE

MScHQ (2 years, part-time study): Online, course-based with two (2) 1-week in-person intensive courses; seven (7) required courses and a supervised project.

Part-Time STUDIES

The Master of Science in Healthcare Quality degree program will be delivered on a part-time basis over two years by an interdisciplinary team from the Faculties of Health Science, Law, and Engineering as well as the Schools of Business and Policy Studies at Queen's



University. The interdisciplinary team of experts in the areas of quality, risk, and safety will provide learners with a unique opportunity to link theoretical foundations with practical application.

Our program is designed for working professionals who would like to pursue a graduate degree. The majority of courses are delivered through interactive online classes and independent learning, but students will be expected to attend two, one-week intensive on campus sessions in July/August of your first and second year of the program. Students will be expected to carry between 1-2 courses at a time.

Required COURSES

- HQRS 840 - Introduction to Quality, Risk and Safety (in Kingston)
- HQRS 841 - Process Improvement in Healthcare
- HQRS 844 - Law, Risk and Healthcare
- HQRS 847 - International Perspectives on Policy, Economics, and Quality Healthcare
- HQRS 846 - Human Factors in Healthcare (in Kingston)
- HQRS 845 - Organizational Behaviour in Healthcare
- HQRS 842 - Research and Evaluation Methods to Assess Quality, Risk & Safety
- HQRS 898 - Project in Healthcare Quality (Final project)

Program HIGHLIGHTS

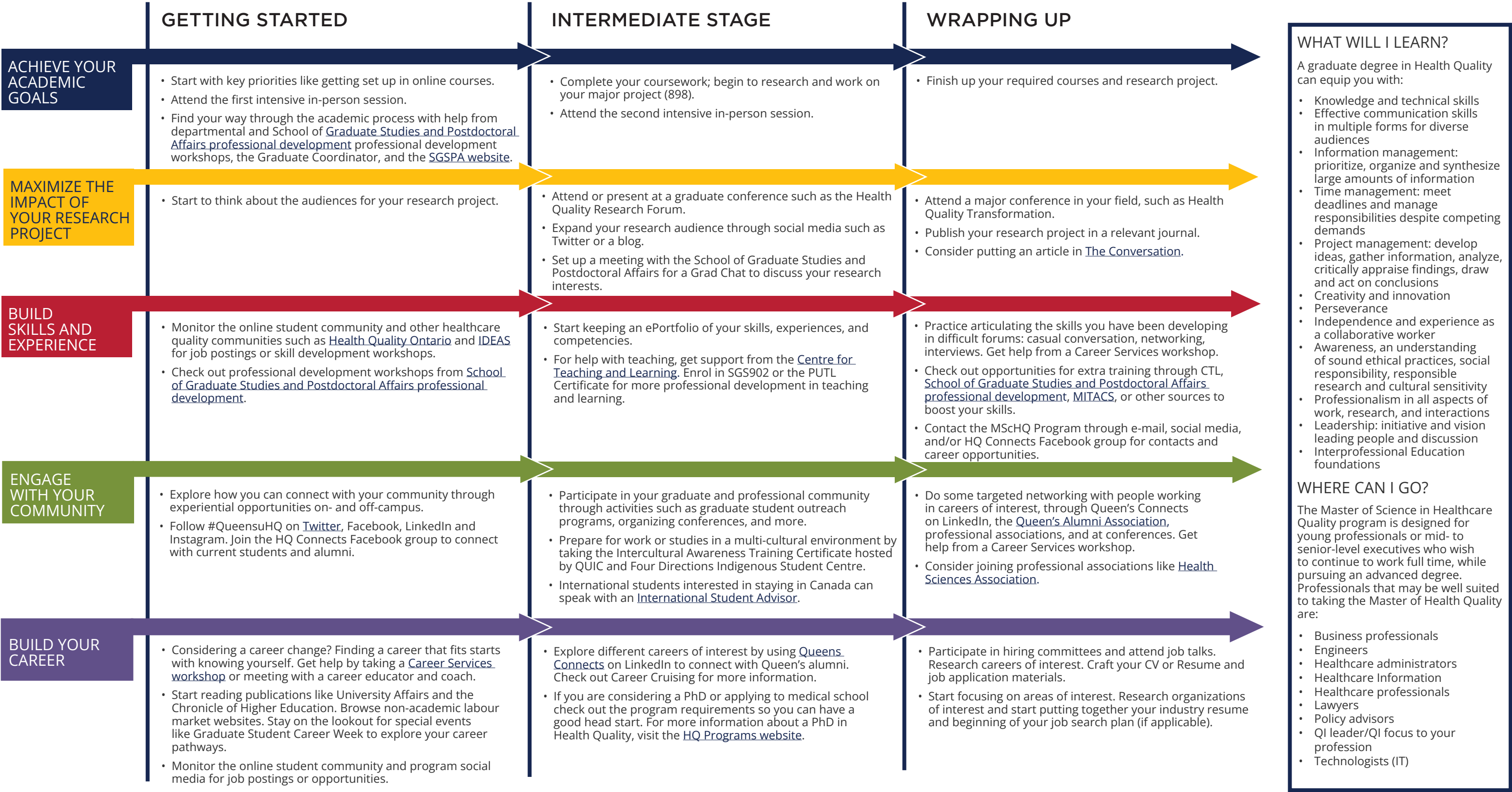
- Study where you work and live
- Build on your academic education or enhance your career with advanced knowledge and skills
- Learn about healthcare quality from an interdisciplinary perspective
- Spend time with a cohort of peers during your two (2), one-week intensive courses at Queen's University in Kingston, Canada
- Experience team-based learning with other students
- Network with students, alumni, and leaders in this emerging field
- Complete a supervised project on a topic of your choice



GRADUATE STUDIES AND POSTDOCTORAL AFFAIRS

Healthcare Quality MSc(HQ) Map

MASTER OF SCIENCE (HEALTHCARE QUALITY) MSc(HQ)



How to use this map

Use the 5 rows of the map to explore possibilities and plan for success in the five overlapping areas of career and academics. The map just offers suggestions – you don't have to do it all! To make your own custom map, use the [My Grad Map](#) tool.

Graduate Studies FAQs

How do I make the most of my time at Queen's?

Use the Grad Map to plan for success in five overlapping areas of your career and academic life. Everyone's journey is different - the ideas on the maps are just suggestions to help you explore possibilities. For more support with your professional development, take advantage of the SGSPA professional development framework and the new [Individual Development Plan \(IDP\)](#) process to set customized goals to help you get career ready when you graduate.

Where can I get help?

Queen's provides you with a broad range of support services from your first point of contact with the university through to graduation. Ranging from help with academics and careers, to physical, emotional, or spiritual resources – our welcoming environment offers the programs and services you need to be successful, both academically and personally. Check out the [SGSPA website](#) for available resources.

Application FAQs

What do I need to know to APPLY?

ACADEMIC REQUIREMENTS

- Grade requirements: Graduated from an accredited, baccalaureate-granting university with a minimum of a second class standing of a B or 73% (GPA 3.0).
- Received a preferred degree in a healthcare discipline, law, business, engineering, or policy studies.
- Have an undergraduate course in statistics and evidence of an understanding of research methodology and/or quality improvement experience.

ADDITIONAL REQUIREMENTS

- A statement of interest in the program is required to match the applicant's academic and work experience with the objectives of the program.
- Current curriculum vitae.
- If English is not a native language, prospective students must meet the [English language proficiency requirements](#) in writing, speaking, reading, and listening. The following minimum scores are required: (1) TOEFL iBT: Writing (24/30); Speaking (22/30); Reading (22/30); Listening (20/30). Applicants must have the minimum score in each test as well as the minimum overall score, or (2) IELTS: 7.0 (academic module overall band score and a 7.0 for each test band), or (3) PTE Academics: 65, or (4) CAEL CE -70 (minimum overall score).

KEY DATES & DEADLINES

- Application deadline: February 1.

Before you start your application, please review the [Graduate studies application process](#) and the [HQ Programs Website](#).

What about FEES?

For more information on MScHQ fees and tuition, please visit the [program website](#).

*Please note that tuition and fees are subject to changes from the Queen's University Board of Trustees. Visit the [Office of the University Registrar](#) for more information on program fees.



Queen's
UNIVERSITY

**HEALTH
SCIENCES**

Graduate Program Assistant
(613) 533-6000 ext. 75370
hqprograms@queensu.ca
queensu.ca/hqprograms