

# Medical Sciences MMSc Map

*Applying to and Navigating Graduate Studies*



GRAD MAP FOR MMSc STUDENTS →

## Why combine **MEDICINE** and **GRADUATE RESEARCH** ?

The Professional Master of Medical Sciences is a new program offered through a partnership between the Department of Biomedical and Molecular Sciences (DBMS), Postgraduate Medical Education (PGME), and Undergraduate Medical Education (UGME). This program has been specifically designed for graduates of medical schools who have not yet matched to a postgraduate residency program in Canada.

The Medical Sciences program provides medical school graduates with an opportunity to enhance their clinical and research skills before applying to a postgraduate residency program. Students will build on the foundations of their medical degree in many ways. They will further develop their clinical skills in the context of the Canadian healthcare system and explore current issues in medical sciences. They'll interpret foundational research and its relationship to clinical practice, conduct research responsibly using appropriate guidelines and procedures, and apply ethical behaviours consistent with academic integrity and professional standards.



It is anticipated that the emphasis on research, clinical skills, and scholarship will enhance any future applications for residency positions through the Canadian Resident Matching Service (CaRMS).

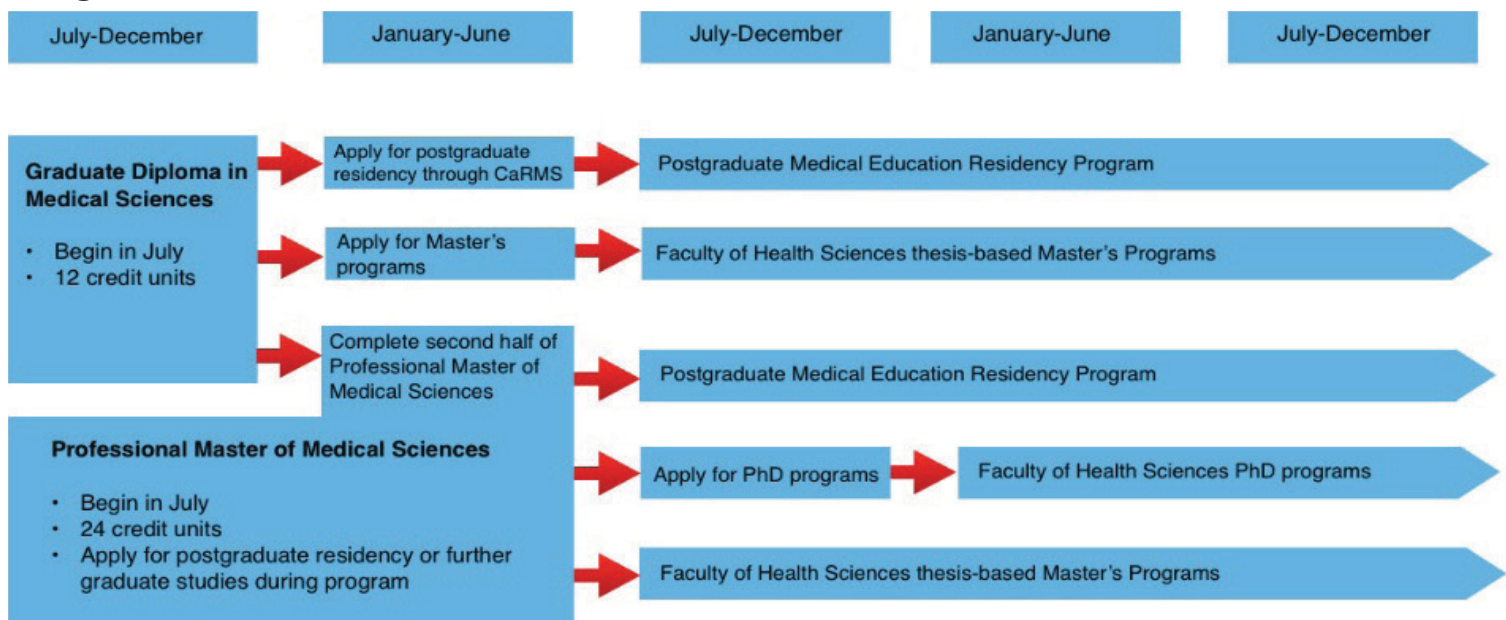
## Program **STRUCTURE**

**Professional Master's (1 year).** This program requires the completion of coursework (MSCI 800, 801, 802, + 1 elective) in addition to a research project. Upon completion, students who wish to pursue further training in research may opt to apply for one of the thesis-based Masters or PhD programs offered in the Faculty of Health Sciences.

**Option 1:** Start in July and go to June

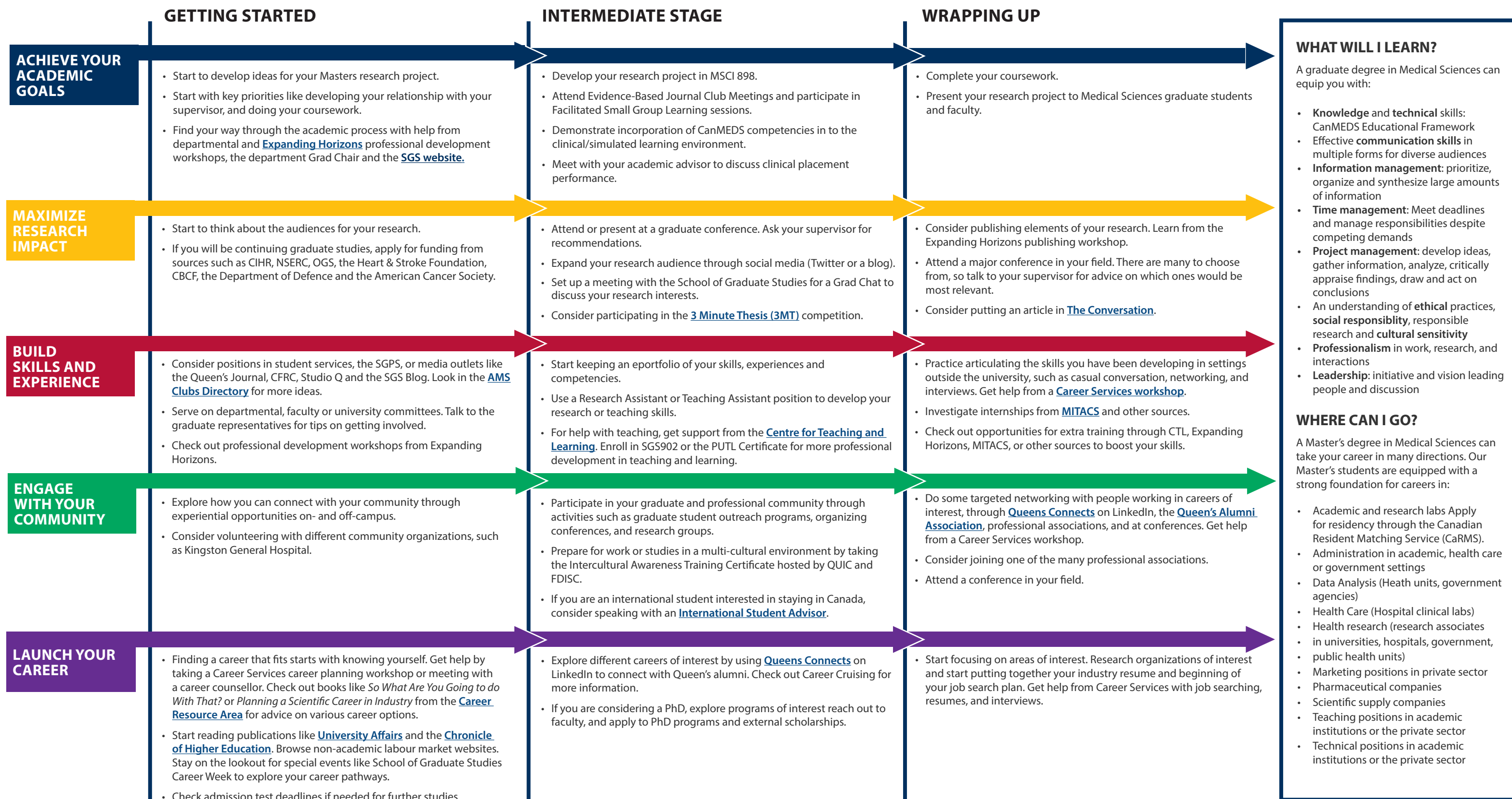
**Option 2:** Start in January and go to December

## Program **OVERVIEW**



# Medical Sciences MMSC Map\*

MASTER OF MEDICAL SCIENCES (MMSC)



# Graduate Studies FAQs

## How do I make the most of my time at Queen's?

Use the Grad Map to plan for success in five overlapping areas of your career and academic life. Everyone's journey is different - the ideas on the maps are just suggestions to help you explore possibilities. For more support with your professional development, take advantage of the SGS professional development framework and the new [Individual Development Plan \(IDP\)](#) process to set customized goals to help you get career ready when you graduate.

## Where can I get help?

Queen's provides you with a broad range of support services from your first point of contact with the university through to graduation. Ranging from help with academics and careers, to physical, emotional, or spiritual resources – our welcoming environment offers the programs and services you need to be successful, both academically and personally. Check out the [SGS website](#) for available resources.

## What is the Queen's graduate community like?

At Queen's, graduate students from all disciplines learn and discover in a close-knit intellectual community. You will find friends, peers and support among the graduate students enrolled in Queen's more than 130 graduate programs within 50+ departments & research centres. With the world's best scholars, prize-winning professional development opportunities, excellent funding packages and life in the affordable, historic waterfront city of Kingston, Queen's offers a wonderful environment for graduate studies. Queen's is an integral part of the Kingston community, with the campus nestled in the core of the city, only a 10-minute walk to downtown with its shopping, dining and waterfront. For more about Kingston's history and culture, see Queen's University's [Discover Kingston](#) page.

# Application FAQs

## What do I need to know to APPLY?

### ACADEMIC REQUIREMENTS

In order to be considered for admission to the Professional Master of Medical Sciences, applicants need to hold an MD or equivalent from a medical school on the [International Medical Education Directory](#) and have a B+ graduating average or higher in all postsecondary education.

Instructions on how to submit all required documentation will be sent to you by email upon application submission.

### REQUIRED DOCUMENTS

Applicants must submit:

- Official transcripts from all postsecondary education;
- Personal Statement indicating the alignment of the applicant's background and career aspirations with the objectives of the program;
- Curriculum Vitae;
- 2 references from individuals familiar with the candidates academic and/or clinical performance; and a
- Medical Student Performance Record or Dean's Letter.

All Applicants must submit their score reports on both Medical Council of Canada Qualifying Examination (MCCQE) Part 1 and National Assessment Collaboration (NAC) examination. Applicants may submit the Medical Council of Canada Evaluating Examination (MCCEE) in place of the MCCQE part 1.

### ADDITIONAL REQUIREMENTS

While proof of English language proficiency is not required, a thorough understanding, as written, is essential. It is strongly suggested that applicants also review requirements for admission to residency programs and to the School of Graduate Studies.

Please note that these requirements are higher than the minimum standards set by the School of Graduate Studies. As these students will be involved in observing the clinical care of patients, and participating in the clinical team discussion about the investigation and management of their clinical problems and in the clinical assessment of standardized patients, a thorough understanding and ability to communicate in English is essential.

## The APPLICATION PROCESS

STEP 1: Submit your online application via the School of Graduate Studies.

STEP 2: Once you have submitted your application, read instructions on how to submit all required documents.

STEP 3: Submit all required documents to the School of Graduate Studies. After review of the complete application, competitive candidates will be invited for an interview with the Medical Sciences Program (via Zoom).



SCHOOL OF  
MEDICINE

Jolene McLean  
Graduate Assistant  
medsciences@queensu.ca  
meds.queensu.ca/education/medical\_sciences

