

Nursing MNSc Map

Applying to and Navigating Graduate Studies

Why GRADUATE STUDIES in NURSING?

Consider a graduate degree in Nursing for all it has to offer: well-developed skills in critical thinking, writing, research and, perhaps more importantly, skills to facilitate change in today's health care system. Graduate students and their work are an important part of an ongoing knowledge creation process that provides the health care system with the necessary tools to understand phenomena using various ways of knowing. Today's job market seeks people with advanced practice skills who can critically analyze information and evidence, synthesize scholarly and public reports, create new knowledge, and lead change and transformation. Study Nursing and you will acquire such skills.

Why QUEEN'S?

The School of Nursing at Queen's offers a challenging and innovative program to prepare graduates with the knowledge and skills to conduct small research projects and participate in research teams, and the critical appraisal skills needed for developing the scientific basis for nursing practice. Our students are taught primarily in small graduate seminars, in which they engage in a lively, critical examination of theory and research, and delve into their own research. Nurtured by close mentoring relationships with faculty supervisors, students engage early and continuously in research and successfully complete the program in 2 years. Situated in an academic environment that embodies scholarship, graduates are well-prepared for careers as leaders in clinical practice, education, and health care management.

Program STRUCTURE

MNSc (full-time, 2 years):

- Thesis-based: 5 term-length courses plus thesis research
- Course-based: 7 term-length courses and a clinical project.

GRAD MAP FOR MNSc STUDENTS



"I think that everyone should know that the School of Nursing does a fantastic job at making people successful. That skill of being pushed to... some place that is slightly uncomfortable, but knowing that you have the supports around you to be successful."

– Morgan Batson, RN, MNSc

Applicants to the thesis-basis stream are encouraged to identify an area of research interest and to contact a potential supervisor before applying. Visit the [School of Nursing website](#) to read faculty profiles and learn more about faculty members' research areas. When you find a faculty member with similar research interests, contact them to introduce yourself and discuss your interest in pursuing graduate studies.

RESEARCH Areas

Practice environments

- Communication strategies and systems
- Leadership
- Models of care
- Workplace culture, structure and health

Populations with complex conditions

- Mental health and/or addictions
- Multimorbidity
- Optimizing function and well-being
- Outcomes monitoring

Health care quality

- Advancing safety
- Educational and technological innovations
- Health system service and delivery and more
- Risk assessment and reduction

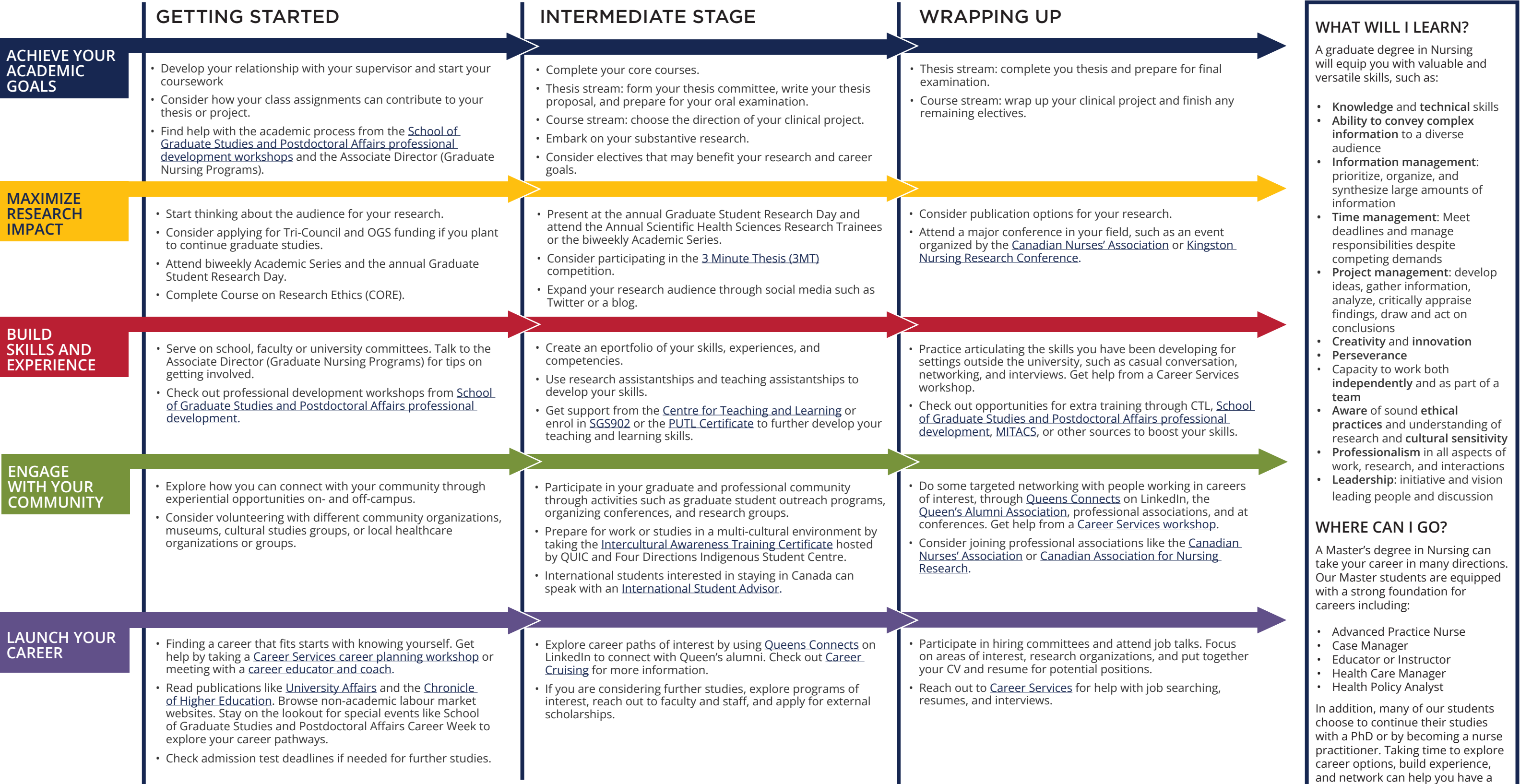


**GRADUATE STUDIES AND
POSTDOCTORAL AFFAIRS**

2023-2024

Nursing MNSc Map

MASTER OF NURSING SCIENCE (MNSc)



WHAT WILL I LEARN?

A graduate degree in Nursing will equip you with valuable and versatile skills, such as:

- Knowledge and technical skills**
- Ability to convey complex information** to a diverse audience
- Information management:** prioritize, organize, and synthesize large amounts of information
- Time management:** Meet deadlines and manage responsibilities despite competing demands
- Project management:** develop ideas, gather information, analyze, critically appraise findings, draw and act on conclusions
- Creativity and innovation**
- Perseverance**
- Capacity to work both **independently** and as part of a **team**
- Aware of sound ethical practices** and understanding of research and **cultural sensitivity**
- Professionalism** in all aspects of work, research, and interactions
- Leadership:** initiative and vision leading people and discussion

WHERE CAN I GO?

A Master's degree in Nursing can take your career in many directions. Our Master students are equipped with a strong foundation for careers including:

- Advanced Practice Nurse
- Case Manager
- Educator or Instructor
- Health Care Manager
- Health Policy Analyst

In addition, many of our students choose to continue their studies with a PhD or by becoming a nurse practitioner. Taking time to explore career options, build experience, and network can help you have a smooth transition to the world of work after graduation.

How to use this map

Use the 5 rows of the map to explore possibilities and plan for success in the five overlapping areas of career and academics. The map just offers suggestions – you don't have to do it all! To make your own custom map, use the [My Grad Map](#) tool.

Graduate Studies FAQs

How do I use this map?

Use the Grad Map to plan for success in five overlapping areas of your career and academic life. Everyone's journey is different - the ideas on the maps are suggestions to help you explore possibilities. For more support with your professional development, take advantage of the SGSPA professional development framework and the new [Individual Development Plan \(IDP\)](#) process to set personalized goals.

Where can I get help?

Queen's provides you with a broad range of support services from your first point of contact with the university through to graduation. Ranging from help with academics and careers, to physical, emotional, or spiritual resources – our welcoming environment offers the programs and services you need to be successful, both academically and personally. Check out the [SGSPA website](#) for available resources.

What is the community like?

At Queen's, graduate students from all disciplines learn and discover in a close-knit intellectual community. You will find friends, peers and support among the graduate students enrolled in Queen's more than 130 graduate programs within 50+ departments & research centres. With the world's best scholars, prize-winning professional development opportunities, excellent funding packages and life in the historic waterfront city of Kingston, Queen's offers a wonderful environment for graduate studies. Queen's is an integral part of the Kingston community, with the campus nestled in the core of the city, only a 10-minute walk to downtown with its shopping, dining and waterfront. For more about Kingston's history and culture, see Queen's University's [Discover Kingston](#) page.

Application FAQs

What do I need to know to APPLY?

ACADEMIC REQUIREMENTS

- Baccalaureate degree in Nursing from an accredited university.
- Minimum overall average equivalent to a B.

ADDITIONAL REQUIREMENTS

- Two academic letters of reference.
- Undergraduate courses in research methodology and statistics.
- Registration (or eligibility to register) as a Registered Nurse with the College of Nurses of Ontario.
- Statement of research interest. Advance contact with supervisors is recommended.
- Copy of Curriculum Vitae (Resume)
- Applicants whose native languages do not include English will need to meet the [English language proficiency requirements](#) in writing, speaking, reading, and listening. For more information, visit the [School of Graduate Studies and Postdoctoral Affairs website](#).

KEY DATES & DEADLINES

- **Application deadline:** February 1st, or until all seats are filled.
- **Notification of acceptance:** mid-March to early April.

Before you start your application, please review the [Graduate studies application process](#).

What about FUNDING?

In keeping with the School of Graduate Studies and Postdoctoral Affairs policy, eligible full-time MNSc students qualify for research assistantships (RA), teaching assistantships (TA), Queen's Graduate Awards (QGA), and internal awards.

We encourage all students to apply for external funding from OGS, CIHR, SSHRC, and other sources. Queen's will automatically issue a one time \$5,000 award to incoming Masters students who have won federal government tri-council awards. For more information, see the School of Graduate Studies and Postdoctoral Affairs' [awards and scholarships](#).



Graduate Program Assistant
(613) 533-6000 ext. 77746
grad.nursing@queensu.ca
nursing.queensu.ca