

Pathology & Molecular Medicine MSc Map

Applying to and Navigating Graduate Studies

GRAD MAP FOR MSc STUDENTS 

Why GRADUATE STUDIES in PATHOLOGY & MOLECULAR MEDICINE?

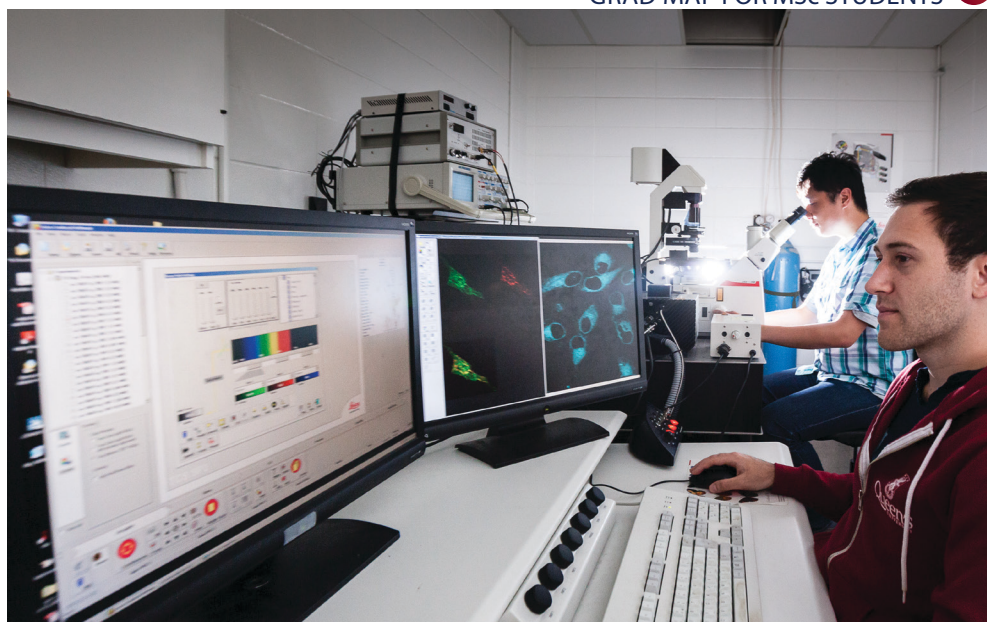
Graduate students and their work are an important part of an ongoing research process that provides the community with ways of understanding natural, cultural, imaginative, social and technological phenomena. Graduate students in Pathology and Molecular Medicine have

Queen's is a great setting to learn first-hand how the fast pace of molecular genetic research is changing clinical practice, leading to exciting new diagnostic and treatment approaches for cancer and other diseases.

opportunities to pursue comprehensive training in basic and translational biomedical research. They pursue advanced degrees under the supervision of an exceptional group of basic, clinical and translational researchers.

Why QUEEN'S?

With a focus on cancer – 12 of our 20 investigators are cancer biologists – our department members deliver comprehensive diagnostic laboratory and clinical services to Southeastern Ontario through the Kingston General Hospital, offering great training for the next generation of biomedical research scientists and laboratory physicians.



Program STRUCTURE

MSc (2 years): Course work, research demonstrating experimental competence, and a thesis.

Research AREAS

- Cancer Research and Developmental Biology
- Human Genetics and Cytogenetics
- Hemostasis, Thrombosis Research, and Vascular Biology

Visit the [Pathology and Molecular Medicine website](#) to read [faculty profiles](#) and learn more about faculty members' research areas. When you find a faculty member with similar research interests to yours, contact them and tell them about your interest in graduate work, area of research interest and related

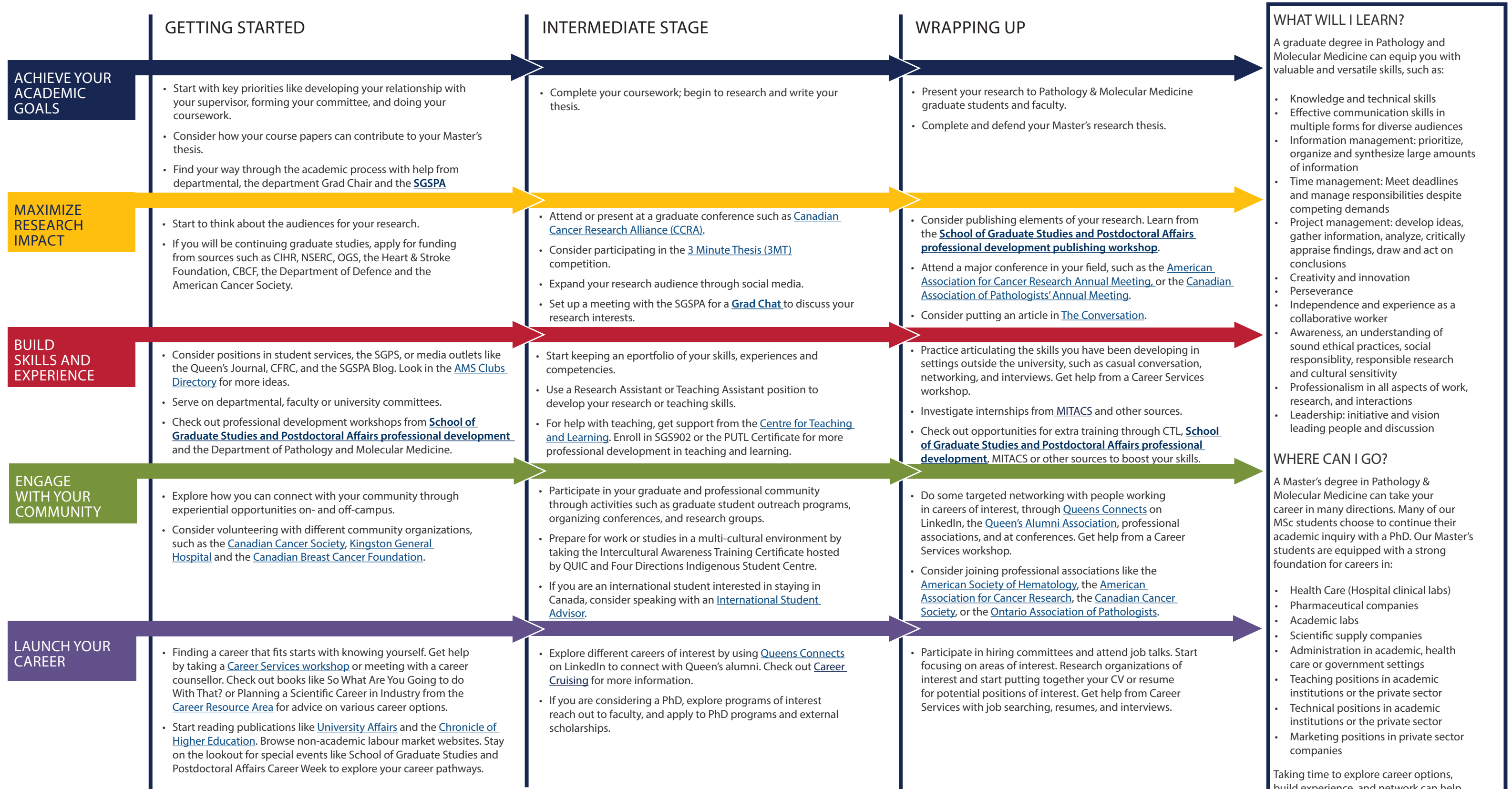
experience. Please include a current CV, contact information for 2-3 references who would be familiar with your academic performance and any research experience and an unofficial transcript.



GRADUATE STUDIES AND POSTDOCTORAL AFFAIRS

Pathology & Molecular Medicine MSc Map

MASTER OF SCIENCE (MSc)



How to use this map

Use the 5 rows of the map to explore possibilities and plan for success in the five overlapping areas of career and academics. The map just offers suggestions – you don't have to do it all! To make your own custom map, use the My [Major Map](#) tool.

Graduate Studies FAQs

How do I make the most of my time at Queen's?

Use the Grad Map to plan for success in five overlapping areas of your career and academic life. Everyone's journey is different - the ideas on the maps are just suggestions to help you explore possibilities. For more support with your professional development, take advantage of the SGSPA professional development framework and the new [Individual Development Plan \(IDP\)](#) process to set customized goals to help you get career ready when you graduate.

Where can I get help?

Queen's provides you with a broad range of support services from your first point of contact with the university through to graduation. Ranging from help with academics and careers, to physical, emotional, or spiritual resources – our welcoming environment offers the programs and services you need to be successful, both academically and personally. Check out the [SGSPA website](#) for available resources.

What is the community like?

At Queen's, graduate students from all disciplines learn and discover in a close-knit intellectual community. You will find friends, peers and support among the graduate students enrolled in Queen's more than 130 graduate programs within 50+ departments & research centres. With the world's best scholars, prize-winning professional development opportunities, excellent funding packages and life in the affordable, historic waterfront city of Kingston, Queen's offers a wonderful environment for graduate studies. Queen's is an integral part of the Kingston community, with the campus nestled in the core of the city, only a 10-minute walk to downtown with its shopping, dining and waterfront. For more about Kingston's history and culture, see Queen's University's [Discover Kingston](#) page.

Application FAQs

What do I need to know to APPLY?

ACADEMIC REQUIREMENTS

- Honours BSc or equivalent in life sciences, biochemistry, biology, or equivalent program with at least a B+ average. (Students with only a general degree can be admitted for a qualifying year.)
- We consider all of your grades, but pay particular attention to the last two years of science-related courses.

ADDITIONAL REQUIREMENTS

- If English is not a native language, prospective students must meet the [English language proficiency requirements](#) in writing, speaking, reading, and listening. The following minimum scores are required: (1) TOEFL iBT: Writing (24/30); Speaking (22/30); Reading (22/30); Listening (20/30). Applicants must have the minimum score in each test as well as the minimum overall score, or (2) IELTS: 7.0 (academic module overall band score and a 7.0 for each test band), or (3) PTE Academics: 65, or (4) CAEL CE -70 (minimum overall score).

KEY DATES & DEADLINES

- Application due: February 1st to be considered for internal funding.
- Notification of acceptance: Quickly pending confirmation of a supervisor.

Before you start your application, please review the [Graduate studies application process](#).

What about FUNDING?

We offer our Master's students minimum funding of \$22,000 annually. For internal, provincial and national competitive award winners, the funding package increases by 2.5%, 5% and 10% respectively.

Apply for external funding from OGS, CIHR/NSERC and other sources. Queen's will automatically issue a one time \$5,000 top-up to Master's winners of federal government tri-council awards. See the School of Graduate Studies and Postdoctoral Affairs' information on [awards and scholarships](#) for more.



Queens
UNIVERSITY

DEPARTMENT OF
PATHOLOGY &
MOLECULAR MEDICINE

Mark Andrews, Graduate Assistant
(613) 533-6000 ext. 79558
mark.andrews@queensu.ca
path.queensu.ca