

Philosophy MA Map

Applying to and Navigating Graduate Studies

GRAD MAP FOR MA STUDENTS 

Why GRADUATE STUDIES in PHILOSOPHY?

The Department of Philosophy at Queen's University has faculty working in a wide variety of fields, including political philosophy, ethics, bioethics, feminism, contemporary metaphysics and epistemology, philosophy of language, philosophy of science, continental philosophy and the history of philosophy. The Department now has an exciting new MA program in Political and Legal Thought (PLT) that involves interdisciplinary work in Philosophy, Political Studies, and Law. The department's colloquium, which meets weekly during the term, affords the opportunity for graduate students to interact with distinguished visiting scholars in a wide variety of philosophical fields.

"The Philosophy department is both intimate and vibrant – offering the benefits of smaller classes with the advantages of a diverse faculty."

– Christine Esselmont, MA, PhD

Why QUEEN'S?

Queen's offers high quality graduate programs that aspire to give students both a solid general education in philosophy and opportunities for specialized work on topics of students' choosing. Queen's Philosophy faculty is very productive in a broad range of areas of research. The small size of the graduate programs allows for individual attention and a collegial atmosphere. The MA is a 12 month program, unique amongst Canadian MA programs to have courses and a thesis component to be completed in one year.

At Queen's, the philosophy graduate students form an active and supportive community. They organize their own colloquium series at which they present work-in-progress, and they participate in departmental reading and research groups, such as the Political Philosophy Reading Group that meets regularly



throughout the year. All students are members of the Philosophy Graduate Student Association, which selects representatives to serve on various departmental committees. The historic city of Kingston, with its vibrant downtown, is a great place to live and study, and the University is proud of its attractive campus situated on beautiful Lake Ontario.

Program STRUCTURE

The 12-month Master's of Philosophy is offered with 2 options:

- Option I: 6 term-length courses, thesis, and oral defense.
- Option II (specialization in Political and Legal Thought): 6 term-length courses, four of which to be taken in the field of Political and Legal Thought, major research paper.

RESEARCH Areas

- Applied Ethics
- Epistemology & Metaphysics
- Ethics
- Philosophy of Language
- Social & Political Philosophy

We encourage you to identify an area of research interest and contact a potential supervisor before applying.

Visit the [Philosophy Department website](#) to read faculty profiles and learn more about faculty members' research areas. When you find a faculty member with similar research interests to yours, contact them and tell them about your interest in graduate work, area of research interest, and related experience.

The email correspondence is also an opportunity for you to find out if the faculty member is accepting new graduate students to supervise. Consider meeting with your potential supervisor at departmental events for prospective students.

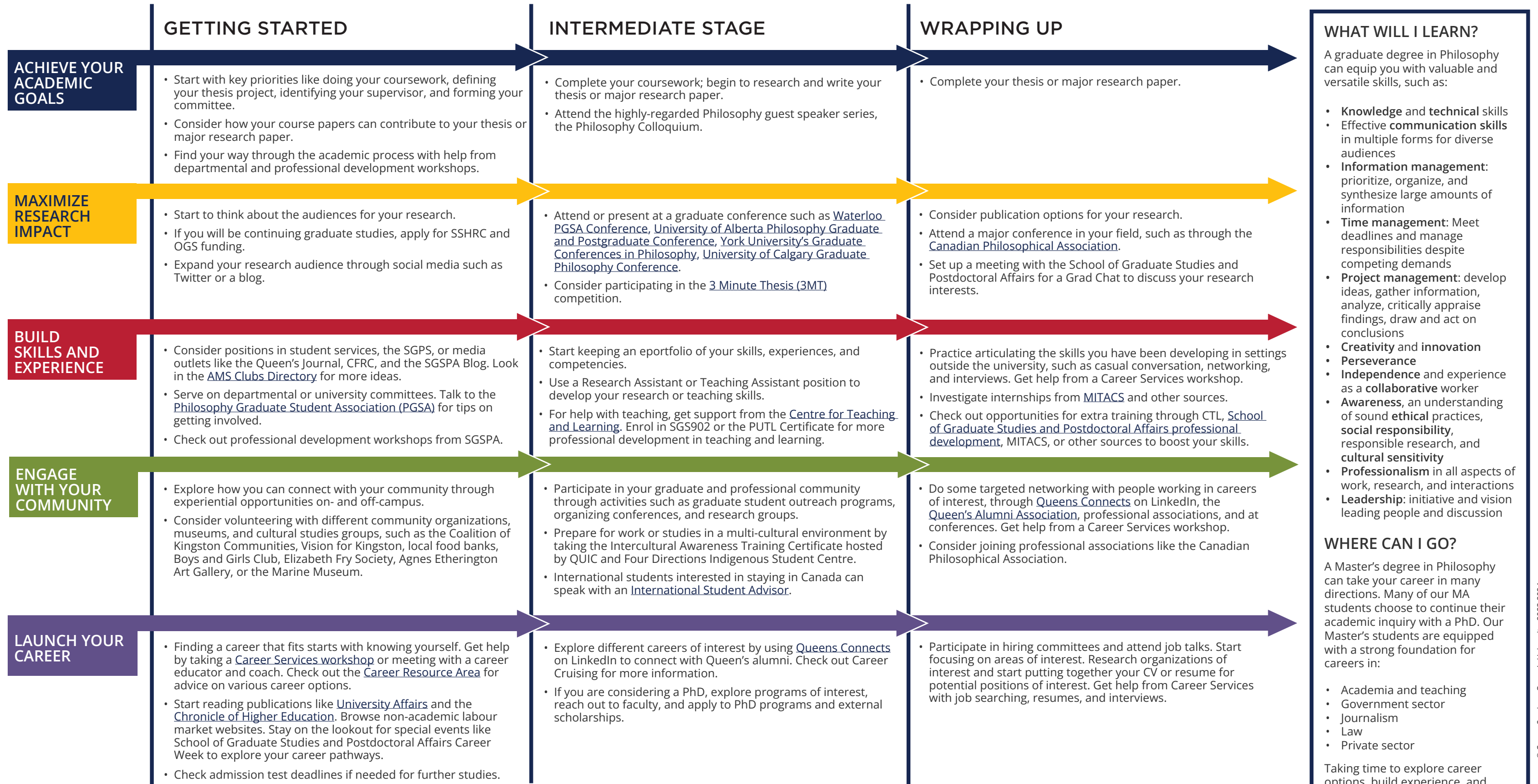


GRADUATE STUDIES AND
POSTDOCTORAL AFFAIRS

2023-2024

Philosophy MA Map

MASTER OF ARTS (MA)



How to use this map

Use the 5 rows of the map to explore possibilities and plan for success in the five overlapping areas of career and academics. The map just offers suggestions – you don't have to do it all! To make your own custom map, use the [My Grad Map](#) tool.

WHERE CAN I GO?

A Master's degree in Philosophy can take your career in many directions. Many of our MA students choose to continue their academic inquiry with a PhD. Our Master's students are equipped with a strong foundation for careers in:

- Academia and teaching
- Government sector
- Journalism
- Law
- Private sector

Taking time to explore career options, build experience, and network can help you have a smooth transition to the world of work after graduation.

Graduate Studies FAQs

How do I make the most of my time at Queen's?

Use the Grad Map to plan for success in five overlapping areas of your career and academic life. Everyone's journey is different - the ideas on the maps are just suggestions to help you explore possibilities. For more support with your professional development, take advantage of the SGSPA professional development framework and the new [Individual Development Plan \(IDP\)](#) process to set customized goals to help you get career ready when you graduate.

Where can I get help?

Queen's provides you with a broad range of support services from your first point of contact with the University through to graduation. Ranging from help with academics and careers, to physical, emotional, or spiritual resources – our welcoming environment offers the programs and services you need to be successful, both academically and personally. Check out the [SGSPA website](#) for available resources.

What is the community like?

At Queen's, graduate students from all disciplines learn and discover in a close-knit intellectual community. You will find friends, peers and support among the graduate students enrolled in Queen's more than 130 graduate programs within 50+ departments & research centres. With the world's best scholars, prize-winning professional development opportunities, excellent funding packages and life in the affordable, historic waterfront city of Kingston, Queen's offers a wonderful environment for graduate studies. Queen's is an integral part of the Kingston community, with the campus nestled in the core of the city, only a 10-minute walk to downtown with its shopping, dining and waterfront. For more about Kingston's history and culture, see Queen's University's [Discover Kingston](#) page.



Jen McLaren, Graduate Assistant
(613) 533-2182
gradphil@queensu.ca
queensu.ca/philosophy

Application FAQs

What do I need to know to APPLY?

ACADEMIC REQUIREMENTS

- Honours BA in Philosophy or equivalent.
- **Grade requirements:** an A- average is normally required to be competitive.

ADDITIONAL REQUIREMENTS

- Statement of Interest
- Writing sample (maximum 10-15 pages)
- If English is not a native language, prospective students must meet the [English language proficiency requirements](#) in writing, speaking, reading, and listening. The following minimum scores are required: (1) TOEFL iBT: Writing (24/30); Speaking (22/30); Reading (22/30); Listening (20/30). Applicants must have the minimum score in each test as well as the minimum overall score, or (2) IELTS: 7.0 (academic module overall band score and a 7.0 for each test band), or (3) PTE Academics: 65, or (4) CAEL CE -70 (minimum overall score).

KEY DATES & DEADLINES

- **Application due:** February 2.
- **Notification of acceptance:** Early March.

Before you start your application, please review the [graduate studies application process](#).

What about FUNDING?

All admitted students to the Master's of Philosophy program are offered a funding package consisting of a grant and a teaching assistantship.

Apply for external funding from OGS, SSHRC, and other sources. Queen's will automatically issue a one time \$5,000 top-up to Masters winners of federal government tri-council awards. For more information, see the School of Graduate Studies and Postdoctoral Affairs' information on [awards and scholarships](#), or see what awards are offered through the Philosophy Department.

