

# Public Administration MPA Map

## Applying to and Navigating Graduate Studies

GRAD MAP FOR MPA STUDENTS 

### Why GRADUATE STUDIES IN PUBLIC ADMINISTRATION?

The Public Administration graduate program is a bridge between the academic world and the world of public affairs. Our multi-disciplinary MPA programs are focused on policy analysis, development, and implementation, preparing new and experienced professionals for rewarding careers in the public, private, and nonprofit sectors. Our graduates have gone on to hold positions as ministers and senior officials in municipal, provincial, and federal governments. They also provide leadership in hospitals, community organizations, and national associations across Canada. Others still work for consulting firms in the private sector.

### Why QUEEN'S?

The School of Policy Studies offers a rich and rewarding learning experience that is unsurpassed in Canada and matched only by the best public policy programs in the world. Through high quality interactive teaching and integrated learning, we enhance leadership in public policy by providing students the inspiration, skills, competencies, and connections to become better contributors to the public good. The MPA curriculum includes core courses in economics, policy analysis, governance, management, and quantitative methods. Through elective courses, students apply their skills to the analysis and resolution of concrete policy and management problems.

### EXPERIENTIAL Learning

Experiential learning is an important aspect of Queen's MPA programs and we strive to incorporate the practical application of skills as a major component of the learning experience. Participate in unique opportunities to link theory and practice, to move from the academic to the applied. Our students participate in study tours in Kingston, Ottawa, Toronto, and Washington. These study tours are an opportunity for students to deepen their understanding of policy in a variety of sectors – public, private, and nonprofit.



### CAREER Support

Queen's School of Policy Studies offers one of the most comprehensive career support programs anywhere. Our workshops, one-on-one mentoring, and alumni networking events are all designed to help our students realize their goals and ambitions.

### Program STRUCTURE

#### Degrees Offered & Method of Completion:

- Master of Public Administration (1 year): 12 half-credit courses or 10 half-credit courses plus a research project.
- Professional Master of Public Administration (2.5 years, part time): 10 half-credit courses.
- Combined Master of Public Administration/Juris Doctorate (4 years): course work and the opportunity to participate in the certificate program at the Queen's International Study Centre in Public International Law at Queen's Herstmonceux castle in England or an international study exchange to pursue broader opportunities.

Visit the [School of Policy Studies website](#) to learn more about the program and its opportunities.

*"The MPA provided a unique blend of academic and professional experience and supported the development of fundamentals skills that I use on a daily basis working on health care policy and strategy implementation. I will forever be grateful for the opportunity to learn from outstanding professors in a dynamic environment and benefit from great experiences provided throughout the program."*

*– Madelaine Meehan, BAH'14, MPA'16*



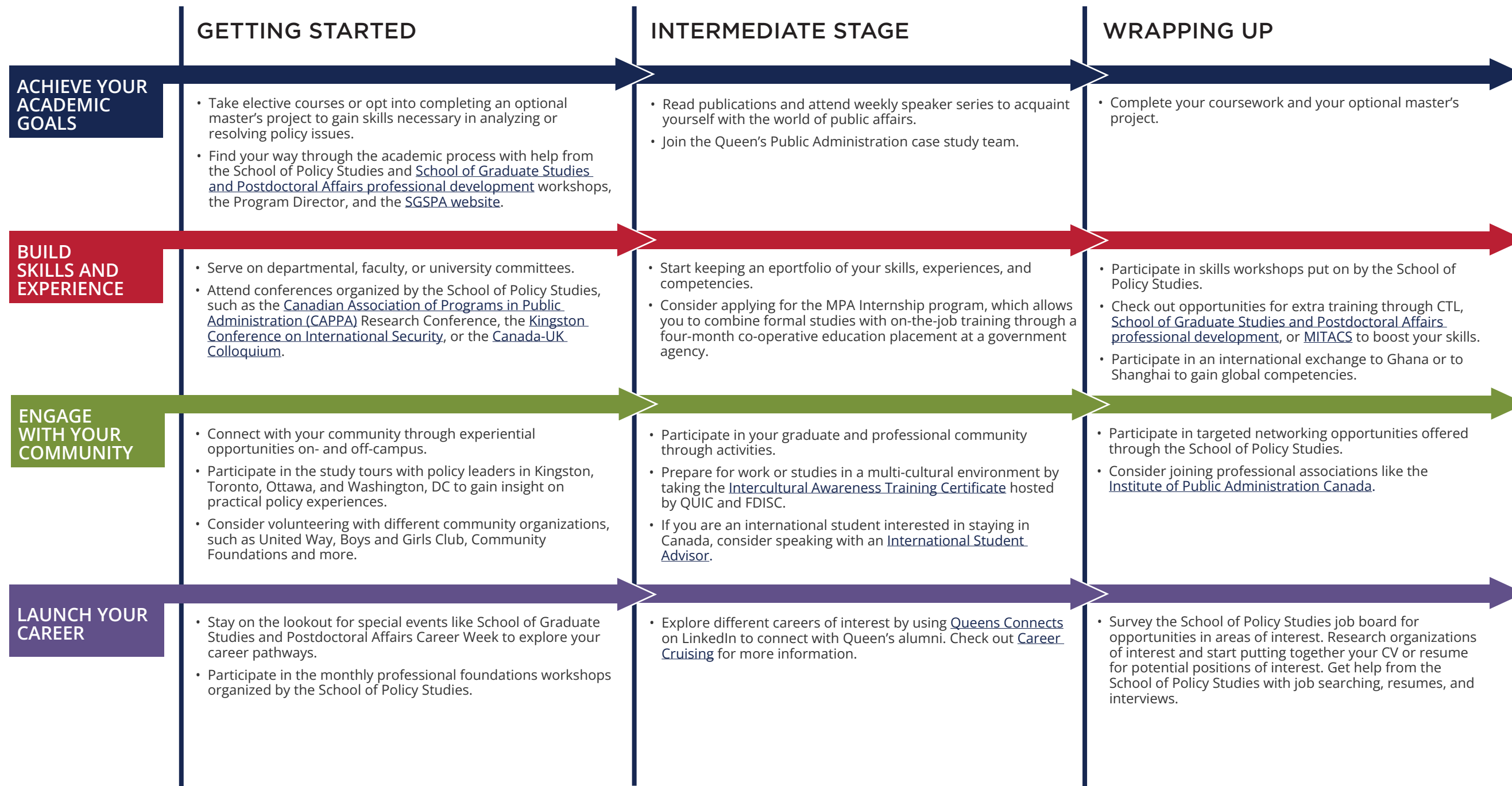
Queen's  
UNIVERSITY

GRADUATE STUDIES AND  
POSTDOCTORAL AFFAIRS

2023-2024

# Public Administration MPA Map

MASTER OF PUBLIC ADMINISTRATION (MPA)



## WHAT WILL I LEARN?

A professional degree in Public Administration can equip you with valuable and versatile skills, such as:

- Strategic Thinking:**
- Articulate the political, institutional, legal, and administrative context in which policy is made and implemented.
  - Recognize the values and principals of Canadian democracy.
- Engagement & Communication:**
- Engage and collaborate with diverse stakeholders and partners.
  - Demonstrate high quality, professional verbal and written communication skills.
  - Prepare high quality written and oral material.
- Analysis & Application:**
- Apply relevant theories, principles and techniques of policy analysis to identify and assess public policy issues and devise options to resolve them.
  - Identify, synthesize, analyze and integrate relevant and appropriate sources of information.
- Professionalism, Collaboration, & Leadership**
- Demonstrate and apply the ethics and values of public service.
  - Develop and complement creative and collaborative approaches to public service leadership.

## WHERE CAN I GO?

A Master's degree in Public Administration can take your career in many directions. Our students are equipped with a strong foundation for careers in:

- Education
- Government
- Health
- Not-for-profits
- The private sector (Includes consulting, financial services, and professional associations.

Taking time to explore career options, build experience, and network can help you have a smooth transition to the world of work after graduation.

### How to use this map

Use the 5 rows of the map to explore possibilities and plan for success in the five overlapping areas of career and academics. The map just offers suggestions – you don't have to do it all! To make your own custom map, use the [My Grad Map](#) tool.

# Graduate Studies FAQs

## How do I make the most of my time at Queen's?

Use the Grad Map to plan for success in five overlapping areas of your career and academic life. Everyone's journey is different - the ideas on the maps are just suggestions to help you explore possibilities. For more support with your professional development, take advantage of the SGSPA professional development framework and the new [Individual Development Plan \(IDP\)](#) process to set customized goals to help you get career ready when you graduate.

## Where can I get help?

Queen's provides you with a broad range of support services from your first point of contact with the university through to graduation. Ranging from help with academics and careers, to physical, emotional, or spiritual resources – our welcoming environment offers the programs and services you need to be successful, both academically and personally. Check out the [SGSPA website](#) for available resources.

## What is the community like?

At Queen's, graduate students from all disciplines learn and discover in a close-knit intellectual community. You will find friends, peers and support among the graduate students enrolled in Queen's more than 130 graduate programs within 50+ departments & research centres. With the world's best scholars, prize-winning professional development opportunities, excellent funding packages and life in the affordable, historic waterfront city of Kingston, Queen's offers a wonderful environment for graduate studies. Queen's is an integral part of the Kingston community, with the campus nestled in the core of the city, only a 10-minute walk to downtown with its shopping, dining and waterfront. For more about Kingston's history and culture, see Queen's University's [Discover Kingston](#) page.



PUBLIC  
ADMINISTRATION

Graduate Assistant

(613) 533-3020

[mpa.coordinator@queensu.ca](mailto:mpa.coordinator@queensu.ca)

[queensu.ca/sps/studyhere](http://queensu.ca/sps/studyhere)

# Application FAQs

## What do I need to know to APPLY?

### ACADEMIC REQUIREMENTS

- 4 year undergraduate degree.
- **Grade requirements:** minimum upper second class standing (B+ average) in the last 2 years of study. Competitive applicants must have an A- or 3.7 GPA in the last two years of study.
- **MPA/J.D. applicants** must have completed a Bachelor's honours degree, with an A- average or 3.7 GPA in the last two years and an LSAT score above the 80th percentile.

### ADDITIONAL REQUIREMENTS

- Statement of Interest.
- A GRE test examination is required if your previous degree is from a non-Canadian university.
- If English is not a native language, prospective students must meet the [English language proficiency requirements](#) in writing, speaking, reading, and listening. The following minimum scores are required: (1) TOEFL iBT: Writing (24/30); Speaking (22/30); Reading (22/30); Listening (20/30). Applicants must have the minimum score in each test as well as the minimum overall score, or (2) IELTS: 7.0 (academic module overall band score and a 7.0 for each test band), or (3) PTE Academics: 65, or (4) CAEL CE -70 (minimum overall score).

### KEY DATES & DEADLINES

#### Application deadlines:

- **MPA Program:** February 1.
- **MPA/J.D. Program:** January 15 (through School of Graduate Studies for MPA), November 1 (through OLSAS for Law).

**Notification of acceptance:** no later than May 15.

Before you start your application, please review the [Graduate Studies and Postdoctoral Affairs application process](#).

## What about FUNDING?

M.P.A. students are not guaranteed a minimum funding, but there are some internal Queen's graduate awards available that vary from \$1,000- \$10,000.

We encourage all students to apply for external funding from OGS, SSHRC, and other sources. Queen's will automatically issue a one time \$5,000 top-up to Masters winners of federal government tri-council awards. For more information on many external awards, see the School of Graduate Studies and Postdoctoral Affairs' information on [awards and scholarships](#).

