

# Public Health MPH Map

## Applying to and Navigating Graduate Studies

GRAD MAP FOR MPH STUDENTS →

### Why GRADUATE STUDIES in PUBLIC HEALTH?

Public health initiatives like clean air and water standards, vaccination and tobacco control have changed the world, yet some of our greatest challenges may still be ahead. The dynamic and growing field of public health needs graduates who can effectively take the best available evidence from research, context and experience and move it into action that reduces inequities, prevents disease and improves health and well-being for all.

Boost your career prospects by completing a Master of Public Health (MPH) degree at Queen's. Develop your capacity to lead Evidence-Informed Action for Public Health.

*"The Queen's MPH program exposed me to areas in public health that I had not previously considered. With a focus on evidence-informed action, it prepared me for tackling public health issues in my current work."*

– MPH Graduate



### Why QUEEN'S?

The Queen's Master of Public Health is a professional, course-based degree that educates, equips and inspires students to take Evidence-Informed Action for Public Health. Our generalist MPH degree focuses on the foundational sciences of epidemiology and biostatistics. We train our students to effectively define public health issues and search, appraise, synthesize, and adapt public health evidence in order to implement and evaluate public health programs and policies.

We teach our students face-to-face and prioritize collaborative learning. Through a combination of academic course work and a 400-hour summer practicum, our students learn to:

- **Think** like public health professionals – we educate students on public health theory and methods
- **Perform** like public health professionals – we equip students with practical skills and competencies
- **Act** like public health professionals – we inspire students to lead with the ethics and values of public health

### Program STRUCTURE

We offer two MPH program options:

- Our 16-month MPH attracts applicants from a range of disciplines. The degree includes 9 courses (6 core, 3 elective), a Public Health Professional Development course, and a 400-hour practicum.

- Our 12-month Accelerated MPH is for experienced professionals with a minimum of 2 years full-time cumulative paid work experience in health care, public health or a related field. The degree includes 8 courses (6 core, 2 elective) and a 400-hour practicum.

Part-time studies are also available.

### Earn a specialization in INFECTION PREVENTION AND CONTROL (IPAC)?

The MPH with Specialization in IPAC (IPAC Specialization) is a unique, embedded training opportunity within the MPH.

To complete the MPH with Specialization in IPAC, students must complete six required foundational courses and three IPAC elective courses:

EPID 851 - Medically Relevant Microbiology in Infection Prevention and Control.

EPID 852 - Foundations of Infection Prevention and Control and Environments of Care.

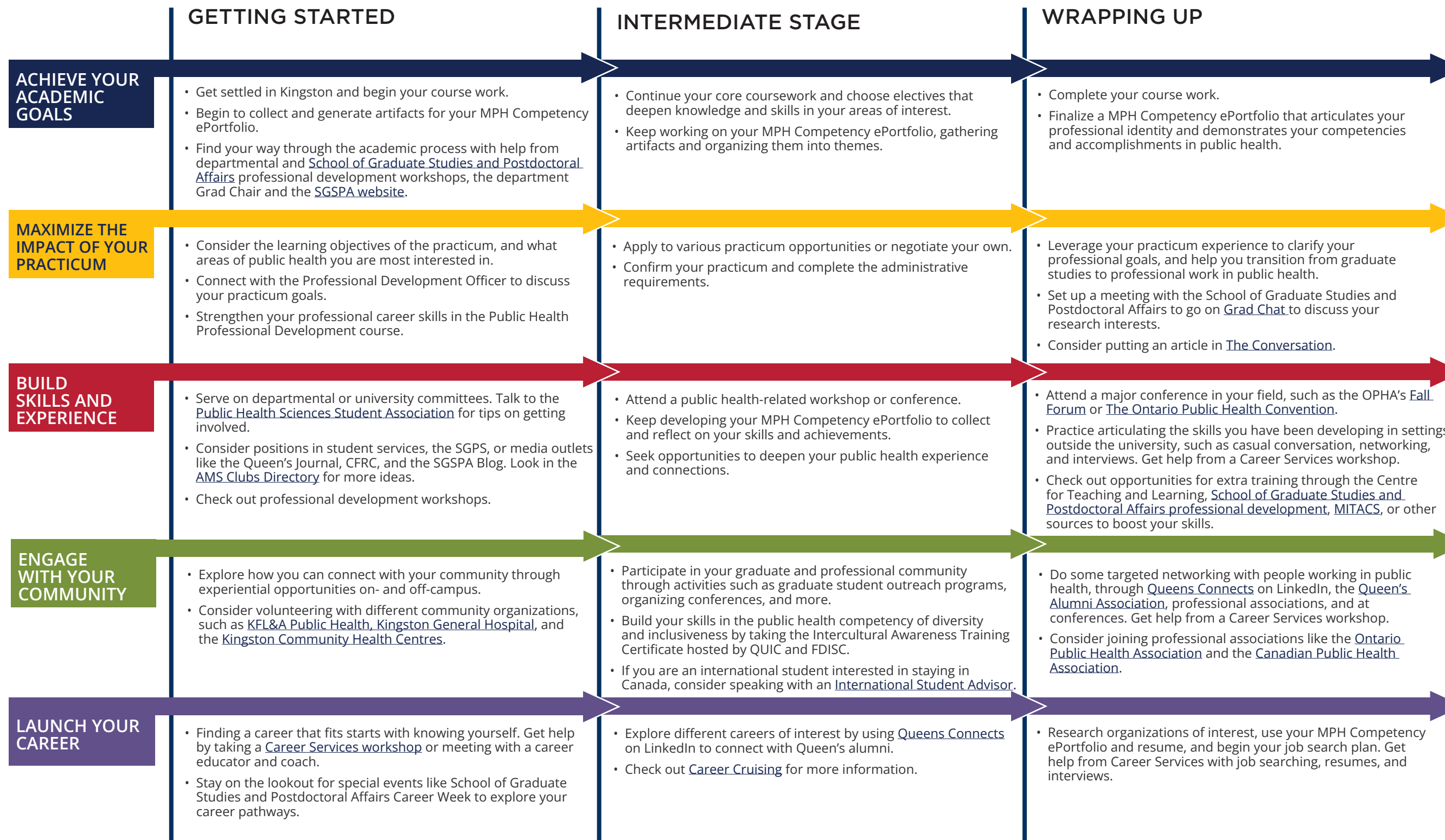
EPID 853 - Healthcare Quality, Safety and Risk.

And complete the 400-hour practicum placement with an IPAC focus

Visit the [Public Health Sciences website](#) to learn more about the program and its opportunities.

# Public Health MPH Map

MASTER OF PUBLIC HEALTH (MPH)



## WHAT WILL I LEARN?

A Master of Public Health can equip you with:

- Public Health Sciences:** Key knowledge and critical thinking skills related to epidemiology, biostatistics, prevention of disease and more
- Assessment and Analysis:** Skills to collect, assess, analyze, and apply information
- Policy and Program Planning, Implementation, and Evaluation:** Skills to plan, implement, and evaluate policies and programs
- Partnerships, Collaboration, and Advocacy:** Ability to influence and work with others, to build teams and mediate different interests
- Diversity and Inclusiveness:** Ability to interact effectively with diverse individuals, groups, and communities
- Communication:** Skills to communicate effectively in written, oral, and multimedia forms to different audiences
- Leadership:** Ability to build capacity and improve performance, as well as create, communicate and apply shared vision, mission, and values

## WHERE CAN I GO?

A Master of Public Health degree can take your career in many directions. Our graduates hold positions as:

- Evaluators
- Health Planners
- Health Promoters
- Project Managers
- Research Analysts
- And more

Queen's MPH graduates work in health units, government agencies, hospitals, community organizations and research institutes across the country and beyond. Taking time to explore career options, build experience, and network can help you have a smooth transition to the world of work after graduation.

### How to use this map

Use the 5 rows of the map to explore possibilities and plan for success in the five overlapping areas of career and academics. The map just offers suggestions – you don't have to do it all! To make your own custom map, use the [My Grad Map](#) tool.

# Graduate Studies FAQs

## How do I make the most of my time at Queen's?

Use the Grad Map to plan for success in five overlapping areas of your career and academic life. Everyone's journey is different - the ideas on the maps are just suggestions to help you explore possibilities. For more support with your professional development, take advantage of the SGSPA professional development framework and the new [Individual Development Plan \(IDP\)](#) process to set customized goals to help you get career ready when you graduate.

## Where can I get help?

Queen's provides you with a broad range of support services from your first point of contact with the university through to graduation. Ranging from help with academics and careers, to physical, emotional, or spiritual resources - our welcoming environment offers the programs and services you need to be successful, both academically and personally. Check out the [SGSPA website](#) for available resources.

## What is the Queen's graduate student community like?

At Queen's, graduate students from all disciplines learn and discover in a close-knit intellectual community. You will find friends, peers and support among the graduate students enrolled in Queen's more than 130 graduate programs within 50+ departments & research centres. With the world's best scholars, prize-winning professional development opportunities, excellent funding packages and life in the affordable, historic waterfront city of Kingston, Queen's offers a wonderful environment for graduate studies. Queen's is an integral part of the Kingston community, with the campus nestled in the core of the city, only a 10-minute walk to downtown with its shopping, dining and waterfront. For more about Kingston's history and culture, see Queen's University's [Discover Kingston](#) page.

# Application FAQs

## What do I need to know to APPLY?

### ACADEMIC REQUIREMENTS

Minimum 75% average in one of the following degrees awarded by a recognized university:

- An Honours Bachelor Degree in Arts or Science
- A Bachelor Degree in Applied Science or Law
- A Degree of Doctor of Medicine
- Or equivalent

### ADDITIONAL REQUIREMENTS

- Undergraduate-level course in mathematics, statistics or data analysis.
- Two copies of transcripts from all post-secondary institutions attended.
- Two academic reference letters.
- Statement of Interest responding to specific questions outlined in the "[How to Apply](#)" section of the MPH program website.
- If English is not a native language, prospective students must meet the [English language proficiency requirements](#) in writing, speaking, reading, and listening.
- For applicants from universities outside of Canada, a Graduate Records Examination (GRE) score is mandatory. A minimum score of 149 on the quantitative section is required. The GRE institution code is 0949 and the department code is 0606.

### ADDITIONAL REQUIREMENTS FOR ACCELERATED MPH PROGRAM

- Demonstration of a minimum of two years cumulative full-time paid employment in health care, public health or a related field.
- Work experience may include two years of accredited residency through the Royal College of Physicians and Surgeons of Canada.
- Eligible work experience is paid employment after the completion of an undergraduate degree and may not include co-op work experience that was part of an undergraduate degree. Supervisors may be contacted to verify your employment and role.
- Reference requirements are one academic reference from a professor under whom you have recently studied, and one professional reference from a supervisor in a relevant employment setting

### KEY DATES & DEADLINES

- **Application due:** January 31.
- **Admission:** There is only one admission date per year, in September.

Before you start your application, please review the [Graduate studies application process](#).

## What about FUNDING?

Queen's University does not provide funding to students entering professional degrees. As a result, the Master of Public Health program is not funded by the Department of Public Health Sciences or Queen's University. MPH students are responsible for supporting themselves financially over the course of the program.



DEPARTMENT OF  
PUBLIC HEALTH  
SCIENCES

Laura Brooks, Graduate Assistant  
(613) 533-2234  
mphadmin@queensu.ca  
phs.queensu.ca