

Rehabilitation Science MSc Map

Applying to and Navigating Graduate Studies

Why GRADUATE STUDIES in REHABILITATION SCIENCE?

Graduate programs in Rehabilitation Science at Queen's University stress the multidisciplinary contribution of many health professions and disciplines to rehabilitation. The focus is on understanding how people who experience disability can be enabled to live full and satisfying lives as members of their community, considering a broad range of individual, community and societal factors. Students can expect to be introduced to a broad spectrum of rehabilitation related concerns including function and participation across a wide range of health conditions and disabilities (for example neurotrauma, mental health, intellectual disabilities), policy development, professional education, and interdisciplinary and intersectoral services. The program attracts students from varied backgrounds including occupational therapy, physical therapy, speech-language pathology, kinesiology, psychology, social work, arts & humanities, nursing, education, epidemiology, law, engineering, and others.

Why QUEEN'S?

The School of Rehabilitation Therapy at Queen's University is committed to leading and inspiring positive changes that transform lives through rehabilitation research, education and practice. As part of this commitment, part of our core mission is to educate rehabilitation scientists who contribute to health and well-being globally through collaboration, creativity, and the discovery of new knowledge. We are recognized nationally and internationally for our excellent faculty, high-quality professional and research programs, and the ways in which our scholarship contributes to the lives of people affected by or at risk of disability.

Program STRUCTURE

MSc (2 years): MSc in Rehabilitation Science students are required to take 2 core courses (6 credits), 2 elective courses (6 credits), and a written thesis with an oral defense over 24 months (2 years).

GRAD MAP FOR MSc STUDENTS 



"If you are someone who thrives on developing your quantitative research skills, wants to understand the complexity of qualitative research, or would like to make an impact on our Canadian healthcare system then the Rehabilitation Science program is just for you! [The program] has broadened my scope in terms of the diversity of opportunities available to me – spanning anywhere from working in a traditional research facility conducting clinical trials to focusing my skills in the policy world and making a large scale healthcare change, to addressing barriers to health care and participation in the international context."

– Kasha Pyka, MSc

RESEARCH Areas

- Community-Based Rehabilitation
- Disability & Participation
- Health Professional Education
- Human Mobility & Motor Control Across Lifespan
- Military and Veteran Health
- Moving Knowledge into Practice and Policy
- Workplace Health & Accommodation

We encourage you to identify an area of research interest and contact a potential supervisor before applying.

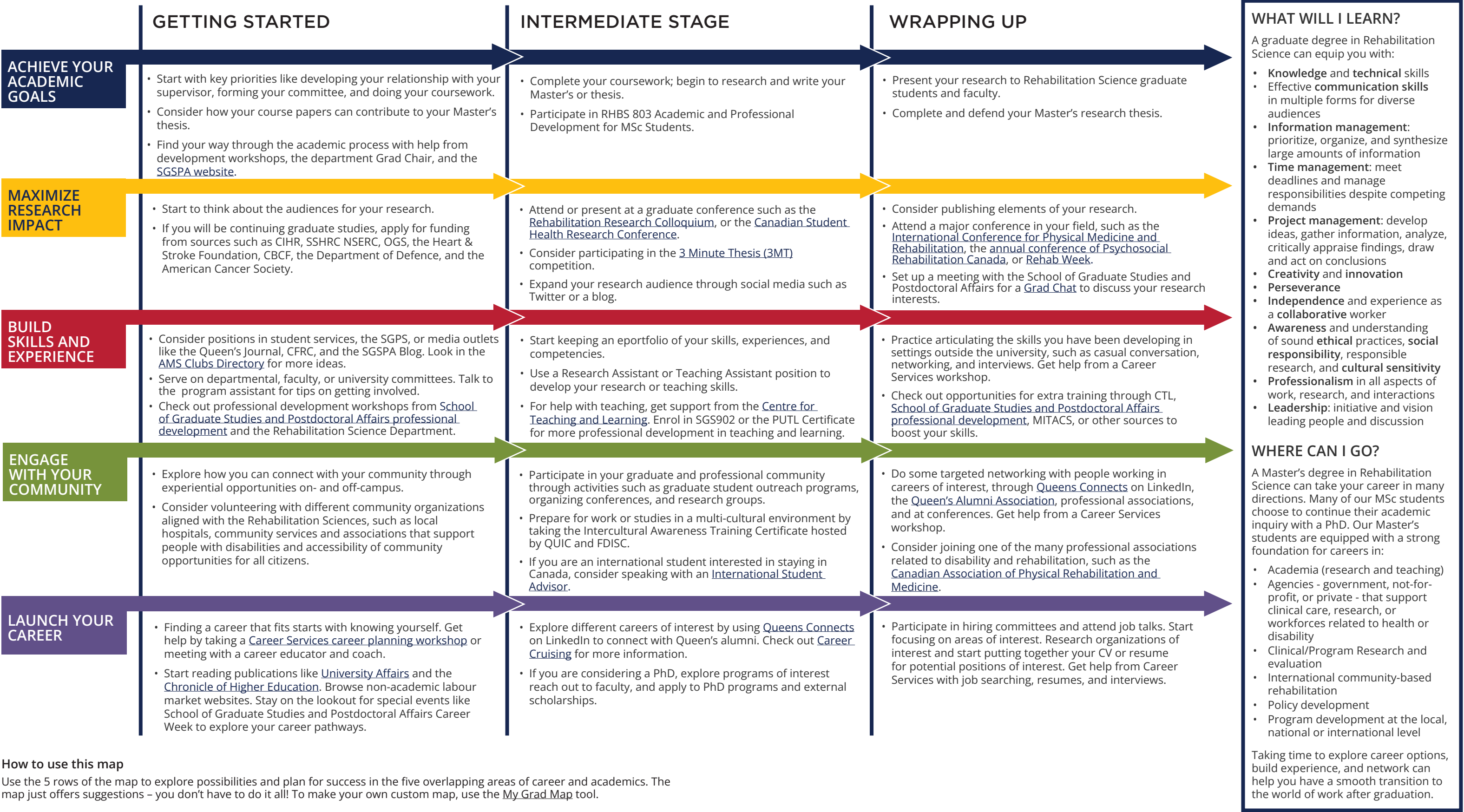
Visit the [Rehabilitation Science website](#) to read faculty profiles and learn more about faculty members' research areas. When you find a faculty member with similar research interests to yours, contact them and tell them about your interest in graduate work and related experience. This is also an opportunity for you to find out if the faculty member is accepting new graduate students to supervise.



GRADUATE STUDIES AND POSTDOCTORAL AFFAIRS

Rehabilitation Science MSc Map

MASTER OF SCIENCE (MSc)



How to use this map

Use the 5 rows of the map to explore possibilities and plan for success in the five overlapping areas of career and academics. The map just offers suggestions – you don't have to do it all! To make your own custom map, use the [My Grad Map](#) tool.

Graduate Studies FAQs

How do I make the most of my time at Queen's?

Use the Grad Map to plan for success in five overlapping areas of your career and academic life. Everyone's journey is different - the ideas on the maps are just suggestions to help you explore possibilities. For more support with your professional development, take advantage of the SGSPA professional development framework and the new [Individual Development Plan \(IDP\)](#) process to set customized goals to help you get career ready when you graduate.

Where can I get help?

Queen's provides you with a broad range of support services from your first point of contact with the university through to graduation. Ranging from help with academics and careers, to physical, emotional, or spiritual resources - our welcoming environment offers the programs and services you need to be successful, both academically and personally. Check out the [SGSPA website](#) for available resources.

What is the community like?

At Queen's, graduate students from all disciplines learn and discover in a close-knit intellectual community. You will find friends, peers and support among the graduate students enrolled in Queen's more than 130 graduate programs within 50+ departments & research centres. With the world's best scholars, prize-winning professional development opportunities, excellent funding packages and life in the affordable, historic waterfront city of Kingston, Queen's offers a wonderful environment for graduate studies. Queen's is an integral part of the Kingston community, with the campus nestled in the core of the city, only a 10-minute walk to downtown with its shopping, dining and waterfront. For more about Kingston's history and culture, see Queen's University's [Discover Kingston](#) page.

Application FAQs

What do I need to know to APPLY?

ACADEMIC REQUIREMENTS

- Honours Bachelor's degree or equivalent in a discipline related to rehabilitation science (e.g. physical therapy, occupational therapy, kinesiology, sociology, psychology, life sciences, engineering, etc.) Contact the program director to discuss how your studies to date may be related to rehabilitation sciences.
- **Grade requirements:** Upper second-class standing (B+). The entire transcript is reviewed but particular attention is given to your last 20 courses and how well you have progressed throughout your academic career.

ADDITIONAL REQUIREMENTS

- If English is not a native language, prospective students must meet the [English language proficiency requirements](#) in writing, speaking, reading, and listening. The following minimum scores are required: (1) TOEFL iBT: Writing (24/30); Speaking (22/30); Reading (22/30); Listening (20/30). Applicants must have the minimum score in each test as well as the minimum overall score, or (2) IELTS: 7.0 (academic module overall band score and a 7.0 for each test band), or (3) PTE Academics: 65, or (4) CAEL CE -70 (minimum overall score).

KEY DATES & DEADLINES

- **Application due:** February 15th.
- **Notification of acceptance:** Late April/ early May.

Before you start your application, please review the [Graduate studies application process](#).

What about FUNDING?

Master's students in Rehabilitation Science are offered a minimum funding of \$8,000 per year.

Apply for external funding from OGS, CIHR/NSERC, and other sources. Queen's will automatically issue a one time \$5,000 top-up to Master's winners of federal government tri-council awards. See the School of Graduate Studies and Postdoctoral Affairs' information on [awards and scholarships](#) for more.



Queen's
UNIVERSITY

SCHOOL OF
REHABILITATION
THERAPY

Caitlin MacDonald
Research & Post Professional Programs Graduate
Assistant
Email: caitlin.macdonald@queensu.ca
<https://rehab.queensu.ca/academic-programs/rhbs>