

Religious Studies MA Map

Applying to and Navigating Graduate Studies

GRAD MAP FOR MA STUDENTS 

Why RELIGIOUS STUDIES?

Religion plays a major role in shaping and influencing various cultures and historical and political movements around the world. Understanding religious traditions and their impact on diverse modern issues is vital preparation for building a career in the global marketplace.

Religious Studies involves, among other things, examining the history of religious traditions, comparing ideas and values, and understanding the place and function of religion in society, including varieties of secularism. Students of religion investigate why people are religious, where religion comes from, and how it can be analyzed.

Why QUEEN'S?

Our MA in Religious Studies equips you for careers involving:

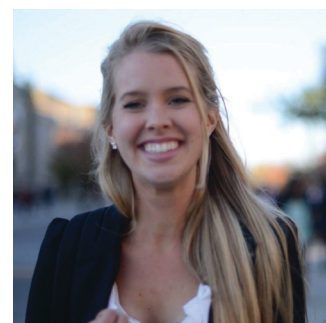
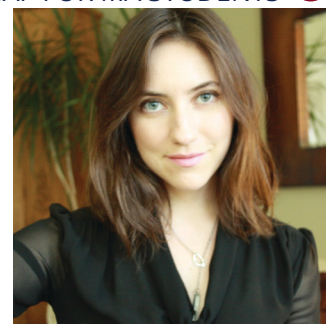
Religious literacy: students gain exposure to religious diversity, and tools for assessing the impact of religion today and in history.

Research skills and information literacy: students learn methods and theories for analyzing complex information and designing research studies.

Communication skills: students get professional development in expressing their own points of view effectively, and publishing their work in academic and popular media.

"As a student at Queen's School of Religion I had the opportunity to not only explore challenging concepts, theories, and histories from an interdisciplinary perspective, I also developed and tested my own skills in the 'real world' by planning and running a conference addressing the Truth and Reconciliation's Call to Action #6, which allowed me to mobilize knowledge, learn about the practical side to academic event planning, and engage closely with community members."

—Kacey Dool, MA



Some faculty and students involved with the MA program 2022, from left to right: Dr. M Shobhana Xavier, Faculty; Dr. Amarnath Amarasingam, Faculty; Dr. Sharda Mosurinjohn, Faculty; Dr. Dustin Atlas, Faculty; Muhammad Ashraf Thachara Padikkal, MA Student; Morgan Tomalty, MA Student

TOPICS: Religion and...

- Decolonization
- Diaspora
- Ecology
- Ethics
- Gender
- Global Development
- Politics in the Middle East
- Popular Culture
- Public Policy
- Race
- Science
- Social Justice
- Sport
- Violence

TRADITIONS and Areas:

- Black Religions
- Christianity
- Greco-Roman Religions
- Indigenous Knowledges
- Islamic Studies
- Jewish Studies
- New Religious Movements
- Secularity Studies
- South Asian Studies

Visit the [School of Religion website](#) to read faculty profiles. Contact the Graduate Coordinator to discuss your research interests before applying.

Program STRUCTURE

The Master's in Religious Studies is a 12-month program: students take one core course and two elective courses in each of the fall and winter terms, a professional development course, then write a Master's Research Essay over the summer.

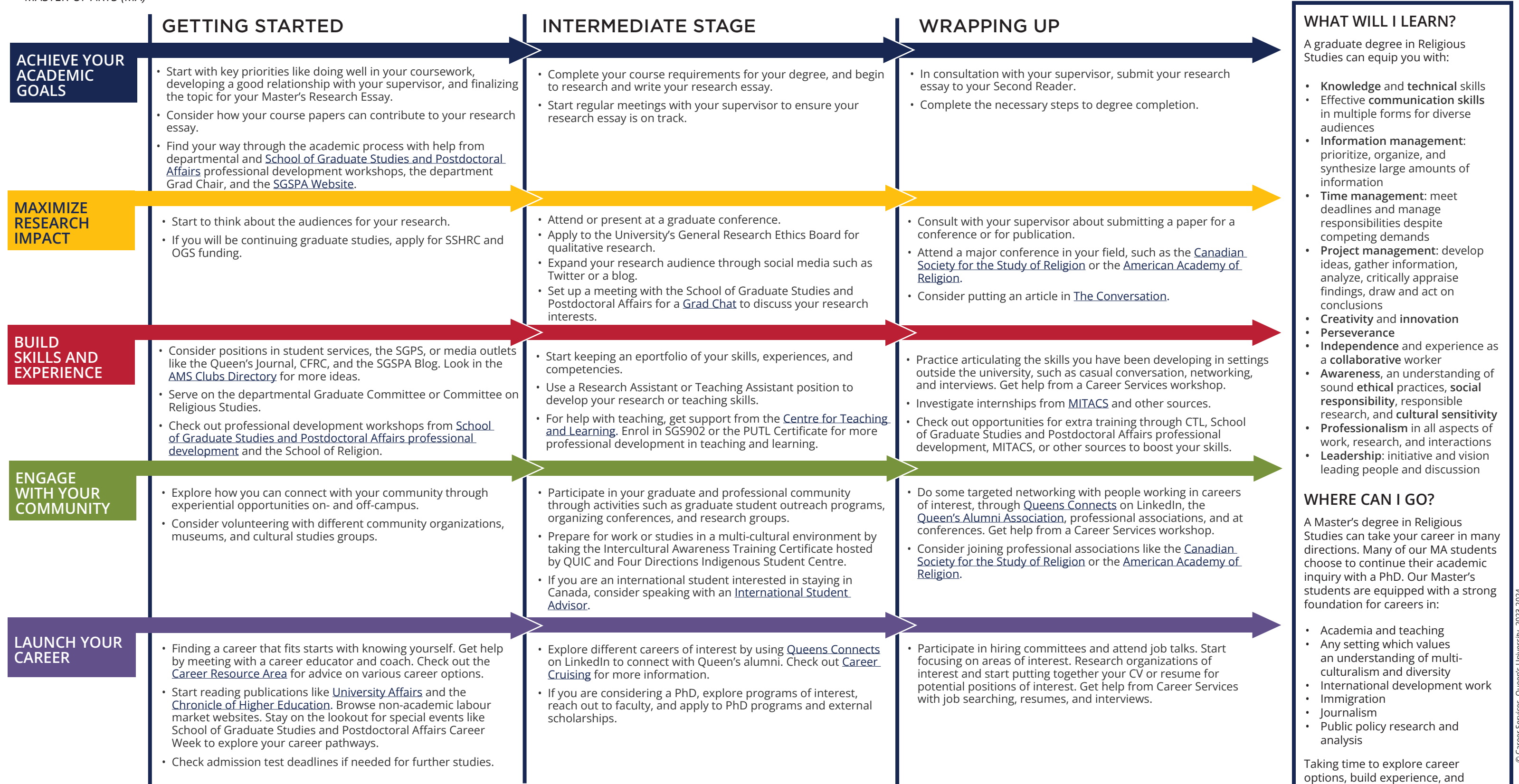
Students are required to attend faculty colloquiums and visiting speaker presentations, and are strongly encouraged to participate in conferences.



GRADUATE STUDIES AND
POSTDOCTORAL AFFAIRS

Religious Studies MA Map

MASTER OF ARTS (MA)



How to use this map

Use the 5 rows of the map to explore possibilities and plan for success in the five overlapping areas of career and academics. The map just offers suggestions – you don't have to do it all! To make your own custom map, use the [My Grad Map](#) tool.

Graduate Studies FAQs

How do I make the most of my time at Queen's?

Use the Grad Map to plan for success in five overlapping areas of your career and academic life. Everyone's journey is different - the ideas on the maps are just suggestions to help you explore possibilities. For more support with your professional development, take advantage of the SGSPA professional development framework and the new [Individual Development Plan \(IDP\)](#) process to set customized goals to help you get career ready when you graduate.

Where can I get help?

Queen's provides you with a broad range of support services from your first point of contact with the university through to graduation. Ranging from help with academics and careers, to physical, emotional, or spiritual resources – our welcoming environment offers the programs and services you need to be successful, both academically and personally. Check out the [SGSPA website](#) for available resources.

What is the community like?

At Queen's, graduate students from all disciplines learn and discover in a close-knit intellectual community. You will find friends, peers and support among the graduate students enrolled in Queen's more than 130 graduate programs within 50+ departments & research centres. With the world's best scholars, prize-winning professional development opportunities, excellent funding packages and life in the affordable, historic waterfront city of Kingston, Queen's offers a wonderful environment for graduate studies. Queen's is an integral part of the Kingston community, with the campus nestled in the core of the city, only a 10-minute walk to downtown with its shopping, dining and waterfront. For more about Kingston's history and culture, see Queen's University's [Discover Kingston](#) page.

Application FAQs

What do I need to know to APPLY?

ACADEMIC REQUIREMENTS

- 4-year Honours Bachelor's degree in Religious Studies (or equivalent).
- **Grade requirements:** minimum B+ cumulative average.

ADDITIONAL REQUIREMENTS

- Writing sample of work completed for a previous course.
- If English is not a native language, prospective students must meet the [English language proficiency requirements](#) in writing, speaking, reading, and listening. The following minimum scores are required: (1) TOEFL iBT: Writing (24/30); Speaking (22/30); Reading (22/30); Listening (20/30). Applicants must have the minimum score in each test as well as the minimum overall score, or (2) IELTS: 7.0 (academic module overall band score and a 7.0 for each test band), or (3) PTE Academics: 65, or (4) CAEL CE -70 (minimum overall score).

KEY DATES & DEADLINES

- **Application due:** February 1st.

Before you start your application, please review the [Graduate studies application process](#).

What about FUNDING?

M.A. students in Religious Studies receive minimum funding of \$18,000 per year. Our funding package includes internal and external awards, and teaching and research assistantships. Some funding assistance is also available to participate in conferences outside of Queen's.

Apply for external funding from OGS, SSHRC, and other sources. Queen's will automatically issue a one time \$5,000 top-up to Masters winners of federal government tri-council awards. For more information, see the School of Graduate Studies and Postdoctoral Affairs' information on [awards and scholarships](#), or see what awards are offered through the School of Religion.

