

# Translational Medicine MSc Map

## Applying to and Navigating Graduate Studies

GRAD MAP FOR MSc STUDENTS 

### Why GRADUATE STUDIES in TRANSLATIONAL MEDICINE?

The innovative Master of Science (MSc) in Translational Medicine is a unique research-based graduate program. The program provides students with a fresh perspective, offering a curriculum interweaving graduate level research with authentic clinical experiences in a multidisciplinary environment across departments at Queen's University.

Combining the fields of medicine and research, this program links graduate level research skills with a variety of clinical experiences including patient interactions, clinical observerships and medical rounds to enhance professional thinking and action. This innovative curriculum will offer important foundation work for future careers in the biomedical field, and will provide critical skills for pursuing careers that include clinician scientists, biomedical researchers, leaders in industry and public health and/or health policy.

### What is TRANSLATIONAL MEDICINE?

Translational Medicine is driven by our patients and their diseases. Guided by this primary focus, translational research spans across the spectrum from molecular and cell biology to preclinical models to patient studies and back again. Our programs aim to train the next generation of researchers to be effective translators of biomedical discovery. Our graduates will operate at the intersection of clinical and related sciences and will have the expertise to generate and lead discovery through an integrated process, increasing the efficiency of translating science knowledge into health improvement.



### Program STRUCTURE

The MSc in Translational Medicine is a 2-year research-based program, which requires the completion of 12-credit courses (3 core courses, 3-credit electives) and a thesis.

**Mini-Master's:** Students registered in the MSc in Translational Medicine with first-class standing, and who show exceptional promise in their research may be considered for promotion to the PhD in Translational Medicine, without completion of the MSc.

### Core COURSES

- TMED 800 Translational Medicine
- TMED 801 Profession of Medicine
- TMED 802 Research Success Skills

### Program HIGHLIGHTS

- Build on your academic education or enhance your career with advanced knowledge and skills
- Learn about translational medicine from an interdisciplinary perspective with authentic clinical experiences
- Experience team-based learning in a close-knit community with small class sizes
- Network with students, alumni, and leaders in this emerging field
- Complete a supervised project on a topic of your choice



*"I chose TMED because I wanted to pursue research that aims to reach people, improve their health, and strengthen our healthcare system."*

*The program offers its students the privilege of directly interacting with the patients whose diseases we are studying, outside of the lab, through clinical observership, and through class lectures. I have become a more passionate, dedicated, and motivated researcher because of this unique program."*

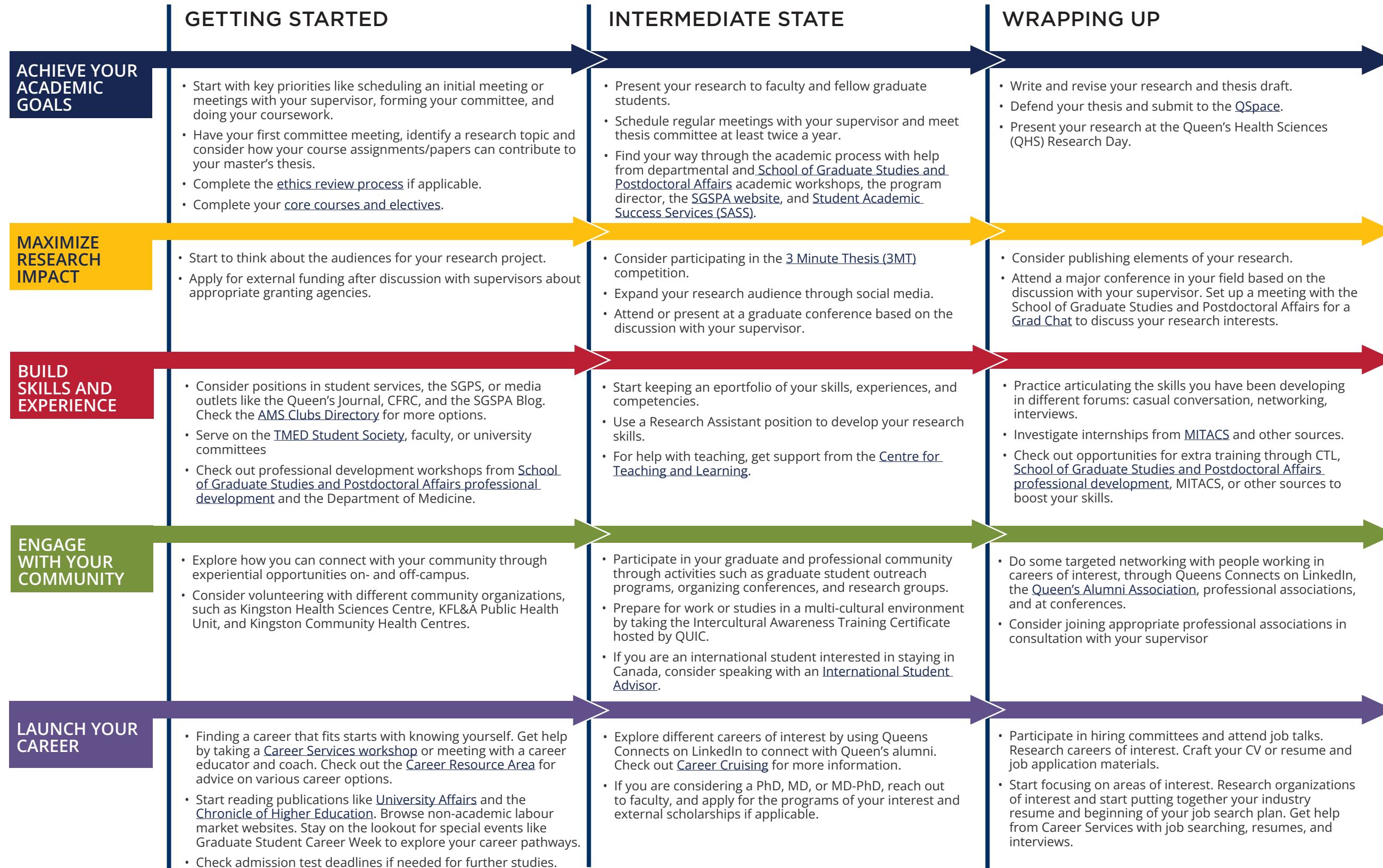
*- Nicole Morris, MSc'24 (Candidate)*



GRADUATE STUDIES AND  
POSTDOCTORAL AFFAIRS

# Translational Medicine MSc Map

MASTER OF SCIENCE (MSc)



## WHAT WILL I LEARN?

A Master's degree in Translational Medicine can equip you with:

- Knowledge and technical skills** in multiple forms for diverse audiences
- Information management:** prioritize, organize, and synthesize large amounts of information
- Time management:** Meet deadlines and manage responsibilities despite competing demands
- Project management:** develop ideas, gather information, analyze, critically appraise findings, draw and act on conclusions
- Creativity and innovation**
- Perseverance**
- Independence** and experience as a **collaborative** worker
- Awareness**, an understanding of sound **ethical** practices, **social responsibility**, responsible research, and **cultural sensitivity**
- Professionalism** in all aspects of work, research, and interactions
- Leadership:** initiative and vision leading people and discussion

## WHERE CAN I GO?

A Master's degree in Translational Medicine can take your career in many directions. Our students are equipped with a strong foundation for careers such as:

- Health research (research associates in universities, hospitals, government, public health units)
- Medicine
- Public Health and Health Policy

Taking time to explore career options, build experience, and network can help you have a smooth transition to the world of work after graduation.

### How to use this map

Use the 5 rows of the map to explore possibilities and plan for success in the five overlapping areas of career and academics. The map just offers suggestions – you don't have to do it all! To make your own custom map, use the [My Grad Map](#) tool.



# Graduate Studies FAQs

## How do I make the most of my time at Queen's?

Use the Grad Map to plan for success in five overlapping areas of your career and academic life. Everyone's journey is different - the ideas on the maps are just suggestions to help you explore possibilities. For more support with your professional development, take advantage of the SGSPA professional development framework and the new [Individual Development Plan \(IDP\)](#) process to set customized goals to help you get career ready when you graduate.

## Where can I get help?

Queen's provides you with a broad range of support services from your first point of contact with the university through to graduation. Ranging from help with academics and careers, to physical, emotional, or spiritual resources - our welcoming environment offers the programs and services you need to be successful, both academically and personally. Check out the [SGSPA website](#) for available resources.



Translational Medicine Graduate Program  
Department of Medicine  
Etherington Hall, Room 1040  
613-533-6000 ext 74148  
tmed@queensu.ca  
[deptmed.queensu.ca/tmed](http://deptmed.queensu.ca/tmed)

# Application FAQs

## What do I need to know to APPLY?

### APPLICATION DEADLINE

- February 1

### ACADEMIC REQUIREMENTS

- An undergraduate honours degree from a recognized university with a minimum of a B+ average in the last two years. At Queen's, a B+ is equivalent to a percentage conversion of 77-79.9% and a Grade Point Average of 3.3 (out of 4.3).

### ADDITIONAL REQUIREMENTS

- Applications for admission are completed and submitted on the [School of Graduate Studies and Postdoctoral Affairs website](#), including an online application form and specific instructions regarding how to submit the following documents:
  - A Statement of Interest about how applicants' background experiences and career aspirations make them ideally suited for the program (up to 4000 characters in the online application);
  - Transcripts for all postsecondary education;
  - Two references from individuals familiar with the applicant's academic performance
- Applicants are required to submit an electronic resumé/curriculum vitae to [tmed@queensu.ca](mailto:tmed@queensu.ca).

### LANGUAGE REQUIREMENTS

- In cases where English is not the first language, nor was the language of instruction in undergraduate studies, applicants must demonstrate English language proficiency. Those applicants will need to provide proof of English language proficiency through one of the following:
  - International English Language Testing System (Academic module) with a minimum score of 7 in each component, or
  - TOEFL iBT with a passing score of 93 including a minimum score of 24 on the speaking section.

Before you start your application, please review the [Graduate studies application process](#).

## What about FUNDING?

We offer our master's students a minimum funding of \$25,000 per year for two years.

Apply for external funding from OGS, CIHR/NSERC, and other sources. Queen's will automatically issue a one time \$5,000 award to incoming Masters students who have won federal government tri-council awards. See the School of Graduate Studies and Postdoctoral Affairs' information on [awards and scholarships](#) for more.

