

# Translational Medicine PhD Map

## Applying to and Navigating Graduate Studies

### Why GRADUATE STUDIES in TRANSLATIONAL MEDICINE?

The innovative Doctor of Philosophy (PhD) in Translational Medicine is a unique research-based graduate program. The program provides students with a fresh perspective, offering a curriculum interweaving graduate level research with authentic clinical experiences in a multidisciplinary environment across departments at Queen's University.

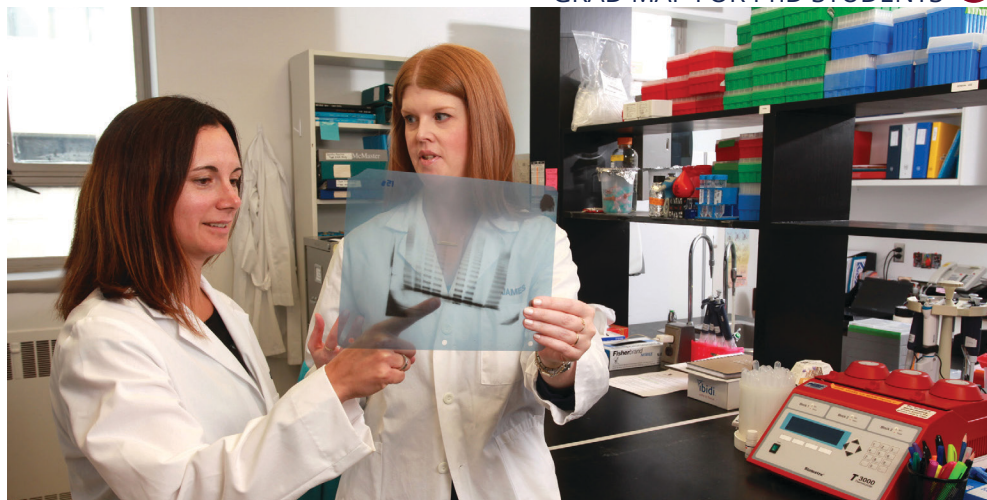
Combining the fields of medicine and research, this program links graduate level research skills with a variety of clinical experiences including patient interactions, clinical observerships, and medical rounds to enhance professional thinking and action. This innovative curriculum will offer important foundation work for future careers in the biomedical field, and will provide critical skills for pursuing careers that include clinician scientists, biomedical researchers, leaders in industry, and public health and/or health policy.

### What is TRANSLATIONAL MEDICINE?

Translational Medicine is driven by our patients and their diseases. Guided by this primary focus, translational research spans across the spectrum from molecular and cell biology to preclinical models to patient studies and back again. Our programs aim to train the next generation of researchers to be effective translators of biomedical discovery. Our graduates will operate at the intersection of clinical and related sciences and will have the expertise to generate and lead discovery through an integrated process, increasing the efficiency of translating science knowledge into health improvement.



GRAD MAP FOR PhD STUDENTS



### Program STRUCTURE

The PhD in Translational Medicine is a 4-year research-based program, which requires the completion of 12-credit courses (3 core courses, 3-credit electives), a comprehensive exam, and a thesis.

The PhD in Translational Medicine has the same coursework requirements such that students who have completed the MSc in Translational Medicine will be granted advanced standing and have no further coursework to complete thus providing an accelerated route to PhD completion.

### Core COURSES

- TMED 800 Translational Medicine
- TMED 801 Profession of Medicine
- TMED 802 Research Success Skills

### Program HIGHLIGHTS

- Build on your academic education or enhance your career with advanced knowledge and skills
- Learn about translational medicine from an interdisciplinary perspective with authentic clinical experiences
- Experience team-based learning in a close-knit community with small class sizes
- Network with students, alumni, and leaders in this emerging field
- Complete a supervised project on a topic of your choice



"I sincerely think the answer "everything" really does describe what gets me excited about Translational Medicine. It is like being a kid in a candy store, where you do get to pick one of each sweet. The confections are colourful, flavourful, exciting and unlimited, just like this program's experiences and opportunities."

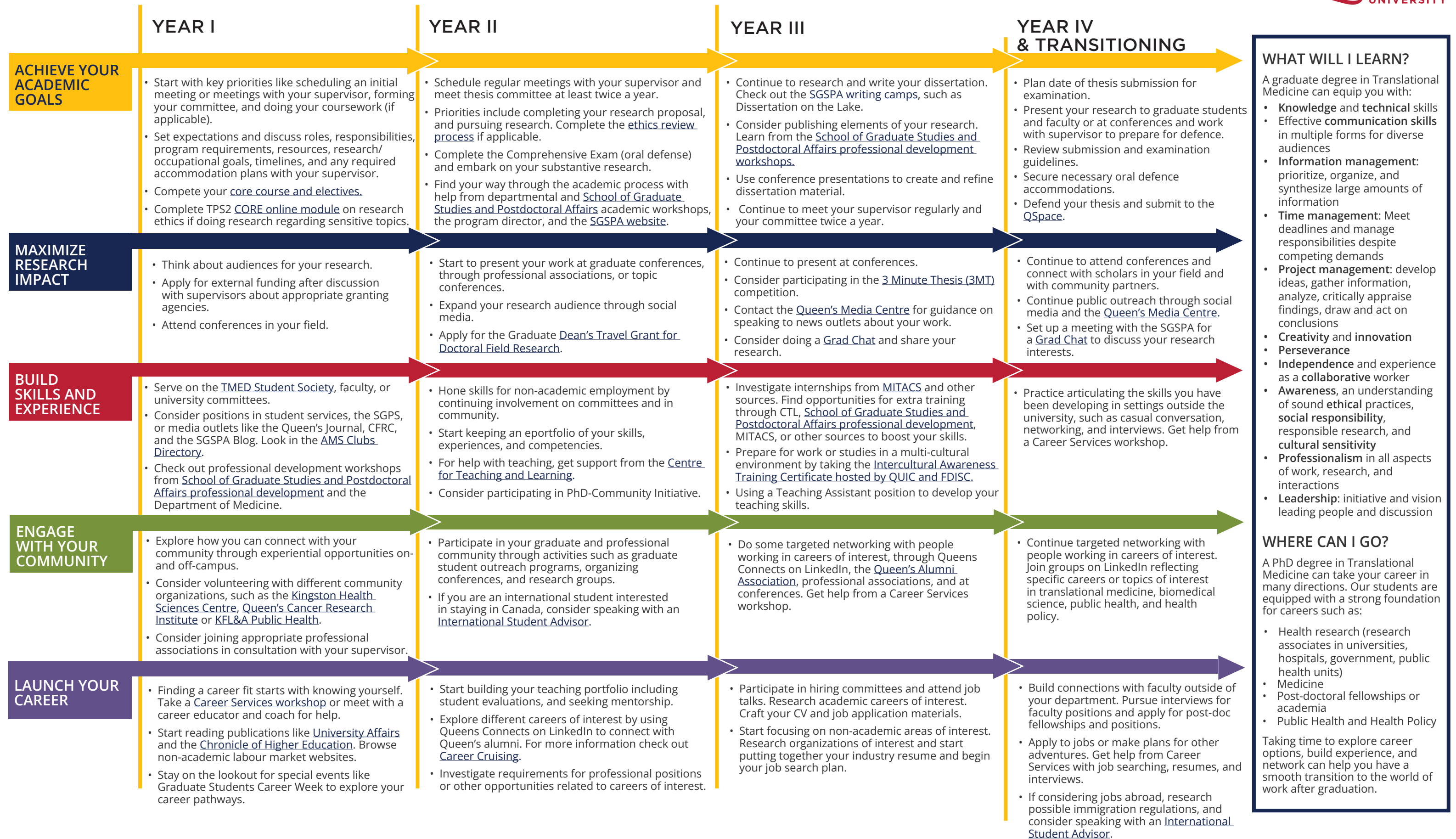
- Sophia Linton, PhD'24



GRADUATE STUDIES AND POSTDOCTORAL AFFAIRS

# Translational Medicine PhD Map

DOCTOR OF PHILOSOPHY (PhD)





# Graduate Studies FAQs

## How do I make the most of my time at Queen's?

Use the Grad Map to plan for success in five overlapping areas of your career and academic life. Everyone's journey is different - the ideas on the maps are just suggestions to help you explore possibilities. For more support with your professional development, take advantage of the SGSPA professional development framework and the new [Individual Development Plan \(IDP\)](#) process to set customized goals to help you get career ready when you graduate.

## Where can I get help?

Queen's provides you with a broad range of support services from your first point of contact with the university through to graduation. Ranging from help with academics and careers, to physical, emotional, or spiritual resources – our welcoming environment offers the programs and services you need to be successful, both academically and personally. Check out the [SGSPA website](#) for available resources.

## What is the community like?

At Queen's, graduate students from all disciplines learn and discover in a close-knit intellectual community. You will find friends, peers and support among the graduate students enrolled in Queen's more than 130 graduate programs within 50+ departments & research centres. With the world's best scholars, prize-winning professional development opportunities, excellent funding packages and life in the affordable, historic waterfront city of Kingston, Queen's offers a wonderful environment for graduate studies. Queen's is an integral part of the Kingston community, with the campus nestled in the core of the city, only a 10-minute walk to downtown with its shopping, dining and waterfront. For more about Kingston's history and culture, see Queen's University's [Discover Kingston](#) page.

# Application FAQs

## What do I need to know to APPLY?

### APPLICATION DEADLINE

- February 1

### ACADEMIC REQUIREMENTS

- A master's degree from a recognized university with a minimum of an A-average. At Queen's an A- is equivalent to a percentage conversion of 80-84.9% and a Grade Point Average of 3.7 (out of 4.3).

### ADDITIONAL REQUIREMENTS

- Applications for admission are completed and submitted on the [School of Graduate Studies and Postdoctoral Affairs website](#), including an online application form and specific instructions regarding how to submit the following documents:
  - A Statement of Interest about how applicants' background experiences and career aspirations make them ideally suited for the program (up to 4,000 characters in the online application);
  - Transcripts for all postsecondary education;
  - Two references from individuals familiar with the applicant's academic performance
- Applicants are required to submit an electronic resumé/curriculum vitae to [tmed@queensu.ca](mailto:tmed@queensu.ca).

### LANGUAGE REQUIREMENTS

- In cases where English is not the first language, nor was the language of instruction in undergraduate studies, applicants must demonstrate English language proficiency. Those applicants will need to provide proof of English language proficiency through one of the following:
  - International English Language Testing System (Academic module) with a minimum score of 7 in each component, or
  - TOEFL iBT with a passing score of 93 including a minimum score of 24 on the speaking section.

Before you start your application, please review the [Graduate studies application process](#).

## What about FUNDING?

We offer our PhD students a minimum funding of \$26,000 per academic year.

Apply for external funding from OGS, CIHR/NSERC, and other sources. Queen's will automatically issue a one time \$10,000 award to incoming Doctoral students who have won federal government tri-council awards. See the School of Graduate Studies and Postdoctoral Affairs' information on [awards and scholarships](#) for more.



Translational Medicine Graduate Program  
Department of Medicine  
Etherington Hall, Room 1040  
[tmed@queensu.ca](mailto:tmed@queensu.ca)  
[deptmed.queensu.ca/tmed](http://deptmed.queensu.ca/tmed)