

# Health Professions Education

## MHPE Map

### Applying to and Navigating Graduate Studies

## Why HEALTH PROFESSIONS EDUCATION?

The Master of Health Professions Education (MHPE) program prepares health professionals to develop competencies and skills to succeed as educators and practitioners who will advance innovations and enhancements in health professions education in academic, clinical, and professional settings. The MHPE program provides an interdisciplinary and collaborative learning, teaching, and scholarship approach.

## Why QUEEN'S?

The Master of Health Professions Education (MHPE) program at Queen's fulfills a niche that is not currently being met in Canada. Our program is the only one available to all health professions (e.g., dentists, doctors, massage therapists, nurses, nutritionists, occupational therapists, paramedics, physiotherapists, public health professionals, veterinarians, etc.) that is both course-based and competency-based. Our program:

- Is designed by health professionals and education experts from a multitude of disciplines.
- Uses team teaching techniques to ensure multiple perspectives are represented.
- Is designed using adult learning principles and adhere to current best practices in online learning.
- Is curriculum mapped and aligned to ensure learners are introduced to key concepts and application of knowledge; these are reinforced and mastered throughout the program.
- Is mapped onto competencies within different health professions.
- Embeds Indigenous perspectives throughout the program, specifically addressing the Truth and Reconciliation Commission Calls to Action.
- Provides an Indigenous Health Professions course team-taught by an Indigenous health professional and an allied education specialist with specific training in this area.
- Focuses on collaborative and interdisciplinary practice.

GRAD MAP FOR MHPE STUDENTS →



## Program STRUCTURE

The MHPE is a two-year, cohort-based, part-time, professional master's program comprised of eight blended courses which creates opportunities for face-to-face and online engagement.

- The first and fifth courses are in-person during mandatory one-week summer intensives, where opportunities are afforded to build a learning and mentoring community with peers, faculty, and staff.
- The five online courses are designed to promote learner engagement with the material, peers, and faculty.
- The final course, a capstone experience, consists of a project that provides an opportunity to link theory to practice and is designed to meet individual needs.

"The content is incredibly relevant to my work as a health practitioner as well as to my teaching role. My diverse group of peers are a joy to work with and learn from. The faculty are exceptionally qualified, supportive, and invested in our learning"



## Part-Time STUDIES

The Master of Health Professions Education degree is delivered on a part-time basis over two years which allows health professionals the flexibility to continue working to meet professional obligations while enhancing their skills and competencies.

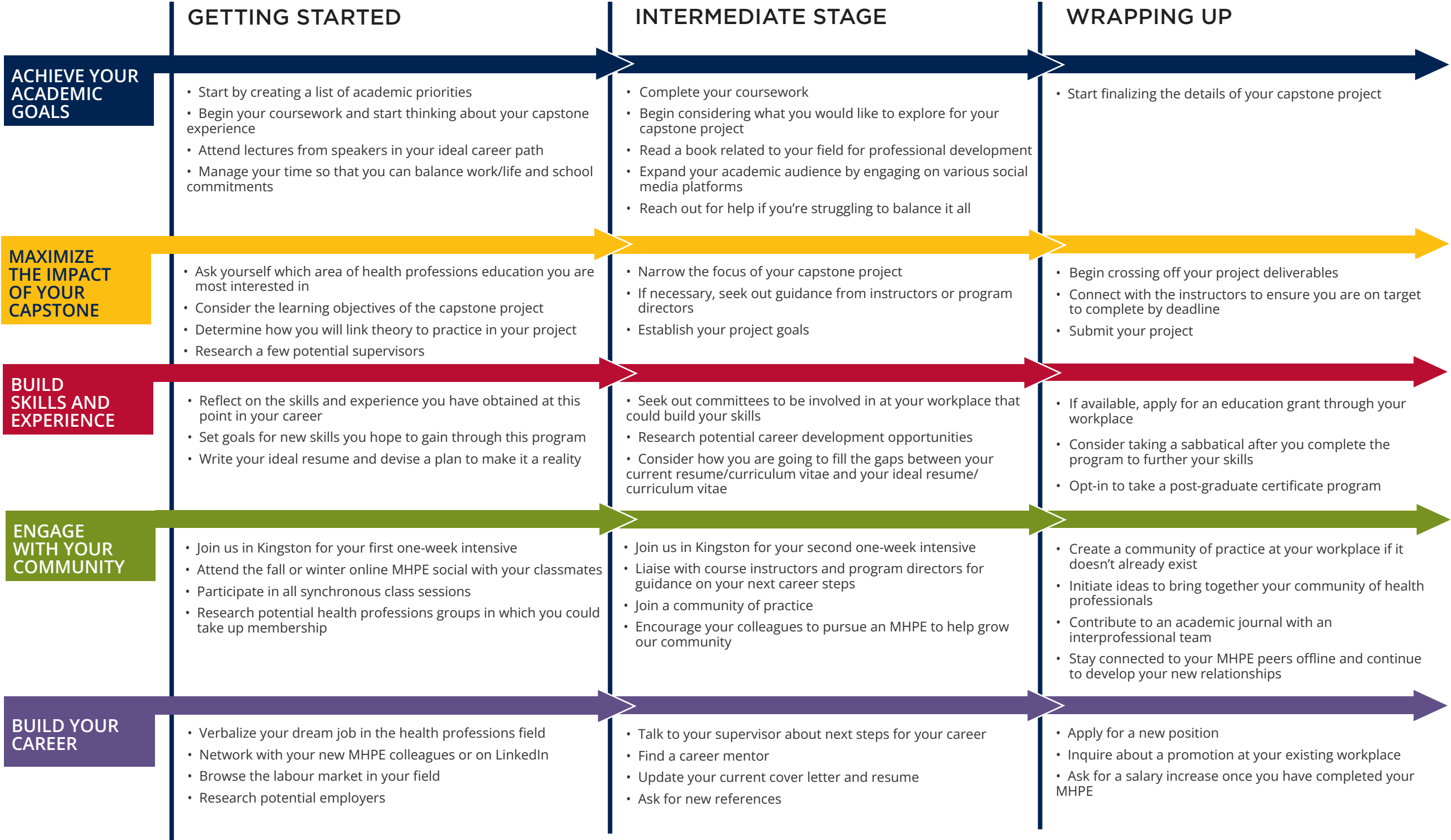
Visit the [MHPE program website](#) to learn more about the program.



**GRADUATE STUDIES AND  
POSTDOCTORAL AFFAIRS**

# Health Professions Education MHPE Map

MASTER OF HEALTH PROFESSIONS EDUCATION (MHPE)



## WHAT WILL I LEARN?

A degree in Health Professions Education can equip you with:

- **Time Management** skills as you learn to balance work/life commitments
- **Communication** skills through the completion of multiple projects and presentations
- **Professionalism** in all areas of your career
- **Collaboration** strategies as you work with professionals across disciplines
- **Leadership** as you learn to take your health professions teaching to the next level
- **Awareness** of Indigenous worldview and ways in which you can contribute to reconciliation
- **Knowledge** of best practices in areas of scholarship, curriculum, and design
- Improved **advocacy** skills

## WHERE CAN I GO?

A Master of Health Professions Education degree will help you take the next step in your existing career or equip you with the skills to embark on a new career!

The MHPE Program is a fantastic way to build your resume while still allowing you to maintain your skills on the job. The MHPE experience will provide you with a foundation to launch into training the next generation of health professionals and beyond.

### How to use this map

Use the 5 rows of the map to explore possibilities and plan for success in the five overlapping areas of career and academics. The map just offers suggestions – you don't have to do it all! To make your own custom map, use the [My Grad Map](#) tool.

# Graduate Studies FAQs



## How do I make the most of my time at Queen's?

Use the Grad Map to plan for success in five overlapping areas of your career and academic life. Everyone's journey is different - the ideas on the maps are just suggestions to help you explore possibilities. For more support with your professional development, take advantage of the SGSPA professional development framework and the new [Individual Development Plan \(IDP\)](#) process to set customized goals to help you get career ready when you graduate.

## Where can I get help?

Queen's provides you with a broad range of support services from your first point of contact with the university through to graduation. Ranging from help with academics and careers, to physical, emotional, or spiritual resources – our welcoming environment offers the programs and services you need to be successful, both academically and personally. Check out the [SGSPA website](#) for available resources.



FACULTY OF HEALTH SCIENCES  
MASTER OF HEALTH  
PROFESSIONS EDUCATION

Jennifer Fowler  
Graduate Assistant  
[mhpe@queensu.ca](mailto:mhpe@queensu.ca)

# Application FAQs

## What do I need to know to APPLY?

### ACADEMIC REQUIREMENTS

- **Grade requirements:** Graduated from an accredited, baccalaureate-granting university with a minimum of a second class standing of a B or 73% (GPA 3.0).

### ADDITIONAL REQUIREMENTS

- A statement of interest in the program is required to match the applicant's academic and work experience with the objectives of the program.
- Current curriculum vitae.
- If English is not a first language, prospective students must meet the [English language proficiency requirements](#) in writing, speaking, reading, and listening. The following minimum scores are required: (1) TOEFL iBT: Writing (24/30); Speaking (22/30); Reading (22/30); Listening (20/30). Applicants must have the minimum score in each test as well as the minimum overall score, or (2) IELTS: 7.0 (academic module overall band score and a 7.0 for each test band), or (3) PTE Academics: 65, or (4) CAEL CE -70 (minimum overall score).

### KEY DATES & DEADLINES

- Application deadline: April 1. Preference will be given to candidates who apply by March 1.

Before you start your application, please review the [Graduate Studies](#) application process and the [MHPE Program website](#).

## What about FEES?

Please note that tuition and fees are subject to changes from the Queen's University Board of Trustees. Visit the [Office of the University Registrar](#) for more information on program fees.

The annual \$1,600 Program Fee is separate from and in addition to tuition and includes (but is not exclusive to) costs related to the yearly Onsite Intensive sessions.

## Required COURSES

### Year 1

- HPE 801 Introduction to Health Professions Education  
Summer (1-week Onsite Intensive - August)
- HPE 802 Health Professions Education Curriculum and Design  
Fall (Online)
- HPE 803 Scholarship in Health Professions Education  
Winter (Online - 6-week compressed timeline)
- HPE 804 Health Professions: Teaching & Learning in Collaborative Practice  
Spring (Online)

### Year 2

- HPE 805 Simulation  
Summer (1-Week Onsite Intensive - August)
- HPE 806 Indigenous Health Professions Education  
Fall (Online)
- HPE 807 Leadership in Health Professions Education  
Winter (Online)
- HPE 898 Capstone: Health Professions Education  
Spring (Online)