

Rehabilitation and Health Leadership DSc RHL MAP

Applying to and Navigating Graduate Studies



GRAD MAP FOR MSc STUDENTS

Why GRADUATE STUDIES IN REHABILITATION AND HEALTH LEADERSHIP?

The DSc (RHL) is a 36 month executive-style degree program that allows students to continue working while completing the degree through a blend of onsite sessions and online learning.

The DSc (RHL) equips currently practicing rehabilitation and health professionals with the knowledge and skills they need to confidently pursue career opportunities that require advanced competencies in leadership, program development, applied research and evaluation, advocacy, change management, and knowledge translation.

The program format and curriculum design are firmly rooted in the belief that collaboration, creativity, and the discovery of new knowledge can inspire changes that benefit people affected by or at risk of disability.

The program is open to all professionals, whose current work or future career goals focus on advancing programs, services, and systems that will positively influence the everyday lives of people affected by or at risk of disability.

The cohort-based program has been designed with the working professional in mind. The blended program format includes short, intensive on-campus components (3-7 days) once or twice per year (depending on year of study), coupled with online learning.

Why QUEEN'S?

As the first professional doctorate program at Queen's University, the DSc (RHL) will train *leader scholars* who are able to apply theory and use rigorous methodologies to inform decision-making in rehabilitation and health settings across the country and around the globe.



Program STRUCTURE

Students progress through the program on a full-time basis in order to complete requirements in 36 months. Students entering with a Master's degree will complete a total of 5 required (core) courses (15 credits), two electives (6 credits), a comprehensive exam, and an applied dissertation. Students entering with a Bachelor's degree will complete one additional core course (Critical Literature Review).

Core COURSES

- Applying Theory to Enable Change
- Applied Research and Evaluation
- Leadership Development
- Communication, Advocacy, and Action
- Preparing Competitive Funding Proposals

Applied DISSERTATION

Students identify a real-world problem in a rehabilitation or health setting, and design, implement and evaluate a process, program or system to address this problem.

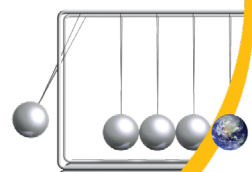
Program DELIVERY

Learning outcomes will be achieved through several interwoven strategies:

- An initial 5 day, on-site intensive to orient students to the program in general, launch work on core courses, and meet peers, faculty members, academic advisors, etc.;
- On-line course work that integrates synchronous and asynchronous components including regular, technology-supported, group-based discussions that are independent of course work to support the development of a community-of-learning and professional network.

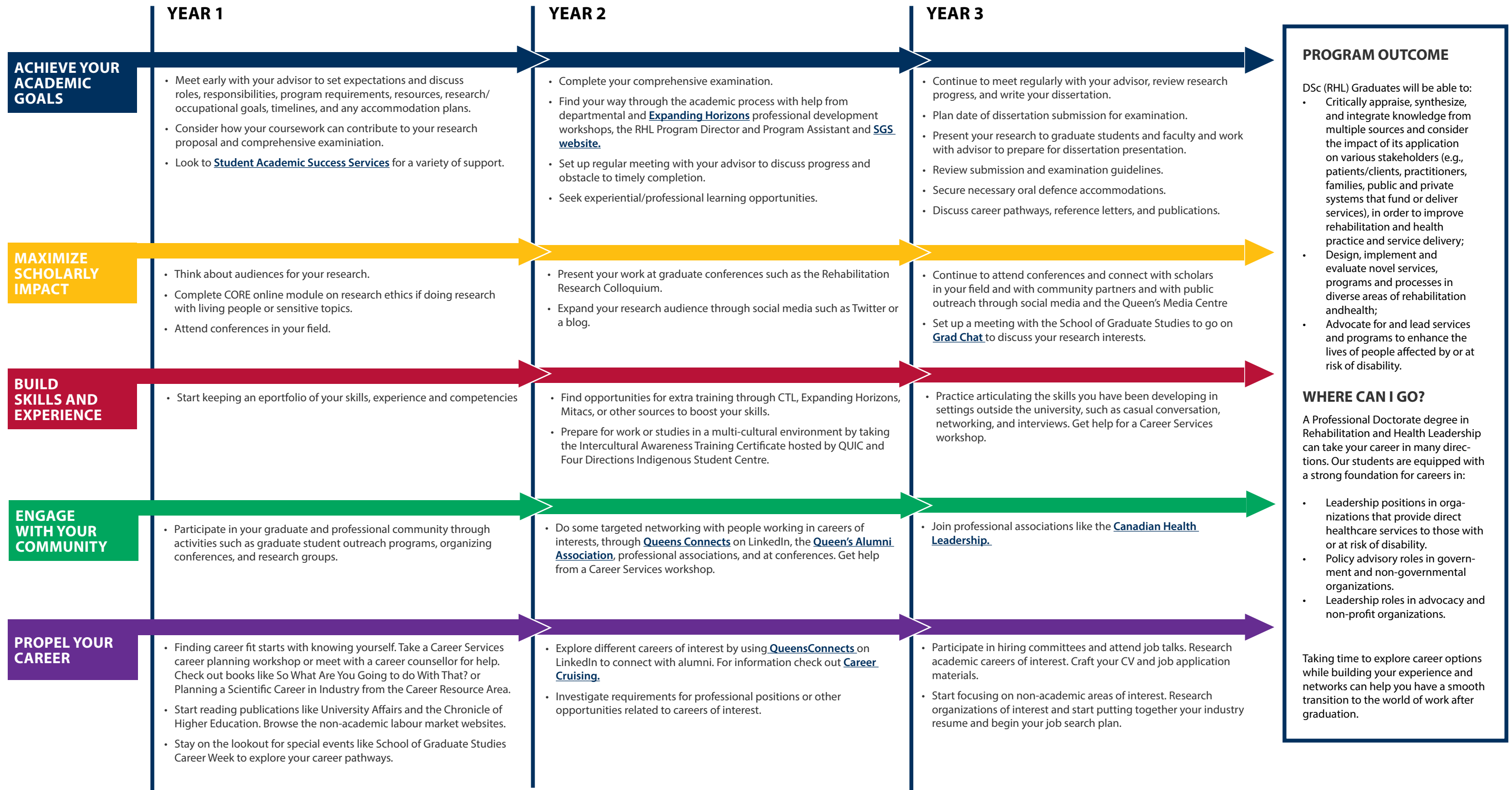
For more details on the program visit the Program website - <https://rehab.queensu.ca/academic-programs/dsc>

School of Graduate Studies
Create an impact
www.queensu.ca/sgs



Rehabilitation and Health Leadership DSc Map*

Doctor of Science (DSc)



Graduate Studies FAQs

Where can I get help?

Queen's provides you with a broad range of support services from your first point of contact with the university through to graduation. Ranging from help with academics and careers, to physical, emotional, or spiritual resources – our welcoming environment offers the programs and services you need to be successful, both academically and personally. Check out the [SGS website](#) for available resources.

What is the community like?

At Queen's, graduate students from all disciplines learn and discover in a close-knit intellectual community. You will find friends, peers and support among the graduate students enrolled in Queen's more than 130 graduate programs within 50+ departments & research centres. With the world's best scholars, and prize-winning professional development opportunities, Queen's offers a wonderful environment for graduate studies.



Application FAQs

What do I need to know to **APPLY**?

Requirements

Academic Requirements

- A B+ average in a Master's degree with a minimum of one-year work experience in a setting that develops, implements or manages programs, services, policies or processes for people affected by or at risk of a disability and evidence of progressive involvement in leadership activities or roles as evidenced in a curriculum vitae and through letters of reference OR
- A B+ average in a Bachelor's degree (four-year undergraduate program or equivalent) with a minimum of 5 years work experience in a setting that develops, implements or manages programs, services, policies or processes for people affected by or at risk of a disability and evidence of progressive involvement in leadership activities or roles as evidenced in a curriculum vitae and through letters of reference.

Additional Requirements

- One Professional Reference: A reference that addresses your work and/or volunteer experience and potential for leadership in rehabilitation and health.
- Two Academic References.
- Current Curriculum Vitae (CV) or Resume: 4 pages maximum, submitted directly to the Graduate Assistant.
- Letter of Intent: Maximum 2500 characters without spaces, submitted directly to the Graduate Assistant.

Key Dates & Deadlines

- Complete applications are reviewed and offers are made on an on-going basis by the program.
- Applicants are encouraged to apply early, before the final application deadline of **January 15**.

Funding

- Application Fee: \$110
- Program Fee: An annual fee of approximately \$1,876.00 (2021-2022). This covers the costs of on-site sessions, including hotel rooms and meals, and textbooks for core courses.
- Tuition Fees: The tuition fees for the 2021-2022 year are approximately \$2800 per term.
- The DSc (RHL) is a professional program designed to allow students to continue working throughout their studies. While funding packages are not provided to students, all applicants are automatically considered for entrance scholarships specific to the program, are encouraged to seek external funding (including employer support), and are eligible to apply for Teaching Assistantships and Research Assistantship positions.



DOCTOR OF SCIENCE
REHABILITATION AND
HEALTH LEADERSHIP

Graduate Assistant, Research and Post
Professional Programs

Email: martina.mcallister@queensu.ca

Phone: 613-533-6000 x 75302

Fax: 613-533-6776

School of
Graduate
Studies
Create an impact

www.queensu.ca/sgs

