

Screen Cultures and Curatorial Studies MA

Applying to and Navigating Graduate Studies



GRAD MAP FOR MA STUDENTS 

Why **GRADUATE STUDIES** in **SCREEN CULTURES AND CURATORIAL STUDIES**?

Housed in the state-of-the-art [Isabel Bader Centre for the Performing Arts](#), the new Master's in Screen Cultures and Curatorial Studies is unique because of its linkage of adjacent disciplines: film and media studies and, more generally, the study of screen cultures, film and media production, and curatorial studies and practice. This multidisciplinary and professionally-oriented program provides students with a wide range of course options and professional opportunities, including academia, arts management, programming, media production (from mainstream media, to artistic and activist production), and curation.

Why **QUEEN'S**?

The program's three strongly interconnected areas of focus – studies, production, and curation – are designed to stimulate creative dialogue in ways that ensure their mutual and respective influence, and in ways that open exciting points of access to multiple disciplinary formations are not offered in any other film, media, cinema or communications Master's program in Ontario.

Visiting scholars, filmmakers, artists, and curators in the core professional development course provide opportunities for practice-based learning, integrating new knowledge gained from other graduate level course work, and implementing some of their newly acquired skills in and beyond the gallery, festival, and museum.

Exhibition space is available to students at the Art & Media Lab in The Isabel Bader Center and the Union Gallery to accommodate curatorial projects.

The program is also uniquely offered in partnership with the Agnes Etherington Art Centre (AEAC), a university and public art museum with physical display space paralleled by an active online program presence. The slate of courses offered by this partnership provide robust opportunities to participate in and benefit from experiential, applied learning.



Program **STRUCTURE**

MA (1 year, full-time). 3 mandatory courses + 2 elective courses + Thesis or Project (The MA thesis should be finished and defended before a committee within the year).

The structure of this program is designed to maximize flexibility allowing students to do traditional academic research, engage in creative and/or community projects and develop professional profiles suitable to a wide variety of academic and non-academic career pathways.

The MA thesis requirement can take the form of a written thesis; or a media work, curatorial project, or video essay, each with a complementary written component.

Visit the [Film and Media website](#) to read faculty profiles and learn more about faculty members' research areas. When you find a faculty member with similar research interests to yours, contact them and tell them about your interest in graduate work and related experience.

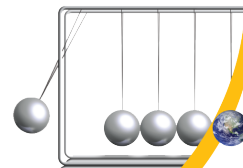


RESEARCH Areas

- Film, Media and Screen Cultures
- Experimental Media
- Moving Image Curatorial Studies
- Moving Image Production (Narrative, Documentary, Experimental, Animation, Open Media)
- Film, Media and Performance Studies
- Historical and Contemporary Film and Media
- Archives, Curation, and Remediation



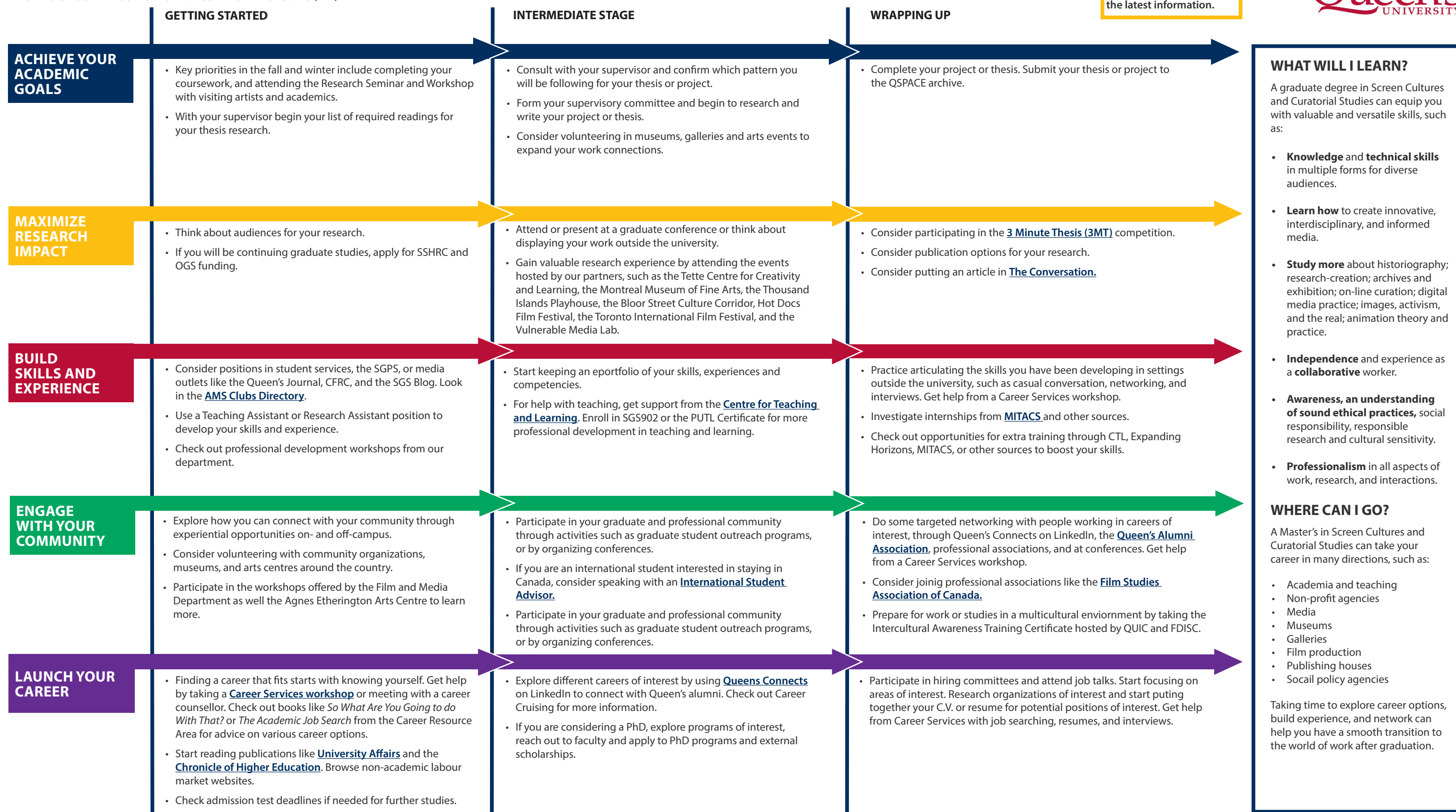
School of Graduate Studies
Create an impact
www.queensu.ca/sgs



Screen Cultures and Curatorial Studies MA MAP*

MASTERS OF SCREEN CULTURES AND CURATORIAL STUDIES (MA)

The coronavirus pandemic may impact how some activities are delivered in 2020-2021. Please check directly with the host of any activity on the map for the latest information.



* This map is intended to provide suggestions for activities and careers, but everyone's abilities, experiences, and constraints are different. Build your own Grad Map using our online **My Grad Map** tool.

Graduate Studies FAQs

How do I use this map?

Whether you are considering or have embarked on graduate studies at Queen's, use this map to plan for success in five overlapping areas of your career and academic life. The map helps you explore possibilities, set goals and track your individual accomplishments. Everyone's journey is different – the guide offers options for finding your way at Queen's and setting the foundation for your future. To make your own customized map, use the online [My Grad Map](#) tool.

Where can I get help?

Queen's provides you with a broad range of support services from your first point of contact with the university through to graduation. Ranging from help with academics and careers, to physical, emotional, or spiritual resources – our welcoming environment offers the programs and services you need to be successful, both academically and personally. Check out the [SGS Habitat](#) for available resources.

What is the community like?

At Queen's, graduate students from all disciplines learn and discover in a close-knit intellectual community. You will find friends, peers and support among the graduate students enrolled in Queen's more than 130 graduate programs within 50+ departments & research centres. With the world's best scholars, prize-winning professional development opportunities, excellent funding packages and life in the affordable, historic waterfront city of Kingston, Queen's offers a wonderful environment for graduate studies. Queen's is an integral part of the Kingston community, with the campus nestled in the core of the city, only a 10-minute walk to downtown with its shopping, dining and waterfront. For more about Kingston's history and culture, see Queen's University's [Discover Kingston](#) page.

Application FAQs

What do I need to know to **APPLY**?

ACADEMIC REQUIREMENTS

- BAH or BFA degree from a recognized university in film or media studies or cognate fields (e.g., communications, cultural studies, film and media production, visual art, art history, popular culture).
- **Grade requirements:** minimum B+ average during undergraduate study.

ADDITIONAL REQUIREMENTS

- If English is not a native language, prospective students must meet the English language proficiency requirements in writing, speaking, reading, and listening. The School of Graduate Studies requires the following minimum scores: TOEFL (paper-based): 550, (2) TOEFL iBT: Writing (24/30); Speaking (22/30); Reading (22/30); Listening (20/30), for a total of 88/120 (applicants must have the minimum score in each test as well as the minimum overall score), or (3) IELTS: 7.0 (academic module overall band score), or (4) PTE Academics: 65.

KEY DATES & DEADLINES

- Application deadlines are posted on our How to Apply page, here: <https://www.queensu.ca/filmandmedia/graduate/how-apply>

What about **FUNDING**?

The Department of Film and Media provides financial support for MA students. The current minimum level of funding is approximately \$16,000 for the academic year. Financial support is derived from a combination of internal and external awards and teaching assistantships.

We encourage all students to apply for external funding from OGS, SSHRC and other sources. Queen's will automatically issue a one time \$5,000 award to incoming Master's students who have won federal government Tri-council awards. For more information on many external awards, see the School of Graduate Studies' information on [awards and scholarships](#).



Queen's
UNIVERSITY

DEPARTMENT OF
FILM AND MEDIA

Stephanie Wilson, Graduate Assistant
(613) 533-2178
stephanie.wilson@queensu.ca
queensu.ca/filmandmedia